

Product datasheet for **MG218951**

Rbm20 (NM_001170847) Mouse Tagged ORF Clone

Product data:

Product Type: Expression Plasmids
Product Name: Rbm20 (NM_001170847) Mouse Tagged ORF Clone
Tag: TurboGFP
Symbol: Rbm20
Synonyms: 1110018J23Rik; 2010003H22Rik; AI646761
Mammalian Cell Selection: Neomycin
Vector: pCMV6-AC-GFP (PS100010)
E. coli Selection: Ampicillin (100 ug/mL)
ORF Nucleotide Sequence: >MG218951 representing NM_001170847
Red=Cloning site Blue=ORF Green=Tags(s)

TTTTGTAATACGACTCACTATAGGGCGGCCGGAATTCGTCGACTGGATCCGGTACCGAGGAGATCTGCC
GCC**CGATCGCC**

ATGGTGCTGGCAGTAGCCATGAGCCAGGACGCGGATCCCAGCGGTCCGGAGCAACCCGACAGAGATGCCT
GCGTTATGCCGGTGTTCAGGGGCCCTCCGTGCCAGGGCCAGCAAGGGATGCAGCCTCTGCCGCCACC
GCCACCGCCTCAGCCTCAAGCCAGCCTGCCAGATCATCCAAAATGCTGCCAAGCTCCTGGATAAGAGC
CCCTTCTCGGTCAATAACCAGAACCCTCTGCTCACGTGCGCAGCCAGCGTCCAGCTGGCCAGATACAGG
CTCAGCTCACCTCCATCGGCTGAAGATGGCACAGACCGCAGTCACCAACAACACTGCAGCGGCCACGGT
TCTGAACCAAGTCTCTCAAAGTGGCCATGTCCAGCCTCTTCAACCAAGCTCCGGCATCCGTCTGTG
CTCGGCACCGCACATGGCCCTACTGGGGTGTCCAGCATGCTGCCTCGGTTCCAGCGCTCACTTCCCT
CAACCGCAATCGCCTTTTCGCCCAAGCCAGACAGGAGGCCAGGGCCTTCTGTGAGCCTCCCCAGCCA
GCCCCCAATGCTATGGTAGTTCATACCTTCAGTGGAGTGGTACCTCAGACCCCTGCCAGCCAGCTGTC
ATCCTTAGCCTTGGGAAGGCTGGGCCTACACCGGCTACTACAGGGTCTATGACTATGGCAAAGCCAACT
CCGGCCAAGCGTATGGTCTGAAACGGAGGGCCAGCCAGGCTTCTTGCCAGCCTCGGCCTCAGCCACAGC
ATCAGGCAGTATGACCTATGAAGGGCACTATAGCCACACAGGGCAGGATGGCCAACTGCCTTTTCTAAA
GACTTCTATGGACCAATGCCAAAGGGCCACACATAGCAGGTGGATTTCCAGCTGATCAGACTGGGAGCA
TGAAGGGAGACGTTGGTGGGCTGTTGCAAGGCACCAACAGCCAGTGGGAGAGGCCCTGGATTCTCAGG
CCAAAACAAGCCGATATTACAGCGGGACCCAGTTTGTGGGCTCCACCTGCCAGCCAGCCTTATGAGCTC
TATGACCTGAAGAGCCTACCTCAGACAGGGCCCTCCTGCCTTTGGGTCTCGGCTTAACAACAGCAAGC
AGGGATTCGGCTGCTCTTGCCGAAGGACAAAGGAGGGACAGGCTGTGCTGTCCGTGAGGCCCTGCAGGG
TCATCAACTGAACGATTTCCGAGGCTTGGCTCCACTCCACCTACCACATATCTGCAGCATCTGTGACAAG
AAGGTGTTTGACTGAAGGACTGGGAGCTACATGTGAAAGGGAAGCTGCATGCCAGAAAATGCCTGCTCT
TCTCAGAAAAGTGTGGCCTCCGGAGTATACGTGCTTCAGGAGAGGGGACACTGTCTGCCTCTGCTAACAG
CACAGCTGTTATAACCCCACTGAAACGAGGATTATACCTCAAATCTTGAACATCATATGCAGCCATT



[View online >](#)

CCAACGAGGGCCTTTGCTCAGTCAAACCCCGTGTTCCTTCAGCTTCTCTGGGACAAGTTTTGCAGCAC
AGAGGAAAGGCGCTGGACGGGTAGTGCACATCTGCAATCTCCCGGAGGGCAGCTGCACGGAGAATGACGT
CATTAACTGGGGCTGCCCTTTGGCAAGGTCACATAATTACATCCTCATGAAGTCAACTAATCAGGCTTTC
TTGGAGATGGCTTACACAGAAGCCGCCAGGCTATGGTCCAGTACTACCAAGAAAAGCCTGCGATTATCA
ATGGCGAGAAGTTACTCATTGCGATGTCCACCAGATAAAGGAATTGCAGCTGAAGAAACCTGGGAAAAA
TGTGGCTGCTATCATCCAAGACATCCATTCCCAGAGGGAGAGGGACATGCTCCGGGAAGCTGACAGGTAT
GGTCCAGAGCGGCCACGTTCTCGAAGTCCAATGAGCCGATCACTCTCCCAAGATCCCATAGTCCCCCAG
GCCCTCTCGGGCTGACTGGGGCAATGGCCGTGACTCCTACGCGTGGAGAGACGAGGATCGAGAGACTGT
CCCCAGGAGGGAGAACGGGGAAGACAAAAGAGACAGGTTGGATGTTTGGGCACATGACCGGAAACTAT
CCTAGGCAGCTGGACAAAGCTGAGTTGGATGAGCGACTCGAAGGAGGGAGGGGCTACCGGAAAAGTACT
TGAAGTCAAGGCTCTCCCGCCCACTCCATTCTGTGTCTGGCTACAAAGCCGGGAAGATGGTACCATCG
AAAAGAGCCTAAAGCCAAGTTGGACAAATACCCAAAGCAGCAGCCGGATGTGCCAGGAAGATCCAGAAGG
AAAGAAGAGGCGAGACTACGGGAGCCAGACACCCTCACCCAGAGGATCCGGCAAGGCAGAGGATCTGG
AGCCCAAGATCACGCGGGCCCTGACGGTACCAAGTCCAAGCAAAGTGAGAAAAGTAAAACCAAGAGAGC
CGACAGAGACCAAGAAGGAGCTGACGACAAAAAAGAAAGCCAACGGCCGAGAATGAGGCTGGAGCTGAG
GAACAGGAAGGCATGGTGGGCATACAGCAGGAAGGGACAGAGTCTGTGATCCAGAAAACACAAGGACAA
AGAAGGGACAAGACTGTGACAGTGGGAGTGAACCCGAGGGGGACAACGGTACCCCAACATGGAGGA
GTTGTCACAGTGGACGAAGTAGGCGAGGAAGATTTTCATCATGGAACCAGACTTACCAGAGCTGGAAGAA
ATTGTGCTATTGACCAGAAAGACAAAACCCCTCCCTAAAATATGTACCTGTGTAACGGCCACCTTAGGTT
TGGACTTGGCCAAAGATTTACCAAGCAGGGAGAGACCCTAGGGAACGGAGACGCAGAATCAGCCTGAA
GCTGCCCGACAAGTGCCGTCTACTTCCGCAAGCTGTCCAATGACACGGACCTGGAGATGCCTGGCCTA
AATCTGGATGCTGAGCGGAAGCCAGCTGAAAGCGAGACAGGCCTCTCACTGGAGGTCTCAAATTGCTACG
AGAAGGAGGCAAGAGGAGAGGAGGACTCAGATGTGAGTCTGGCCCTGCAGTGCAGCAAATGTCCCTCCC
CCAGCCAGCAGATGAGCGGGCCCGCAGTCCAGCCCTTTCTCGATGACTGCAAGGCCAGGGGTCCCCA
GAAGATGGGTCTCATGAAGCCAGCCCCCTGGAAGGAAAAGCCAGCCACCTACTGAAAGCGACCTCCAAA
GCCAGGCTTGCCGAGAAAACCCAGGTACATGGAAGTGAATCTCTGAACGTGAGATCGCCAGAATTAC
CGAAGCGGAGCTGAAAGAGCCCCCTTTCTTTGCCTTCTGGGAACCGGAGGTGTTCACTGAACTTAGCATT
CCTCTAGGAGTGGAGTTCGTGGTCCCAGGACTGGCTTTTATTGCAAGCTGTGTGGCCTGTTCTACACAA
GCGAGGAGGCGGCCAAAGTGAAGGACTGCCGAGCACTGTCCACTACAGGAACCTACAGAAGTACCTGTC
TCAGCTGGCAGAGGAGGGCCTGAAGGAGACGGAGGGGACAGACAGCCCAAGCCCCGAGCGTGGTGGGATT
GGTCCACACTTGGAAAGGAAGAAGCTA

ACGGGCCGCTCGAG - GFP Tag - GTTAA

Protein Sequence: >MG218951 representing NM_001170847
 Red=Cloning site Green=Tags(s)

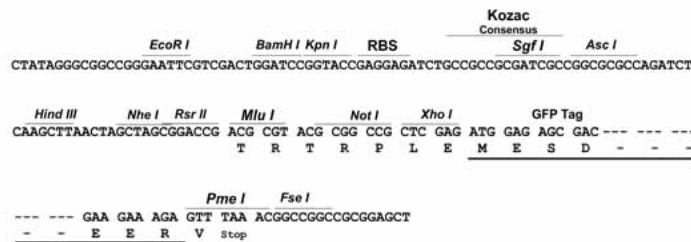
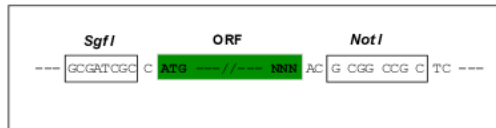
```
MVLAVAMSQDADPSGPEQPDRDACVMPGVQGPSVPGQQGMQPLPPPPPPQPQASLPQIIQNAKLLDKS
PFSVNNQNPLLTSPASVQLAQIQALTLHRLKMAQTAVTNNTAAATVLNQVLSKVAMSQPLFNQLRHPSV
LGTAHGPTGVSQHAASVPSAHFPSTAIASFSPSQTGGPGPSVSLPSQPPNAMVVHTFSGVVPQTPAQPAV
ILSLGKAGPTPATTFYDYGKANSQAYGSETEGQPGFLPASASATASGSMTYEGHYSHTGQDQGPFAFSK
DFYGPNAQPHIAGGFADQGTGSMKGDVGLLQGTNSQWERPPGFSGQNKPDITAGPSLWAPPASQPYEL
YDPEEPTSDRAPPAFGSRLNNSKQGFSGCRRTKEGQAVLSVRPLQGHQLNDFRGLAPLHLPICSI CDK
KVFDLKDVELHVKGKLAHQKCLLFSESAGLRSIRASGEGTLSASANSTAVYNPTGNEDYTSNLGTSYAAI
PTRAFASQNPVFPSSASGTSFAAQRKGAGRVVHICNLPEGSCTENDVINLGLPFGKVTNYILMKSTNQAF
LEMAYTEAAQAMVQYYQEKPAIINGEKLLIRMSTRYKELQLKPKGKNVAAIIQDIHSQRERDMLREADRY
GPERPRSRSPMSRSLSPRSHSPPGPSRADWGNRDSYAWRDEDRETVPRRENGEDKRDRLDVWAHDRKHY
PRQLDKAELDERLEGGRYREKYLKSGSPGLHSVSGYKREDGYHRKEPKAKLDPKQPPDVPGRSRR
KEEARLREPRHPHPEDSGKAEDLEPKITRAPDGTGSKQSEKSKTKRADRDQEGADDKKEQLAENEAGAE
EQEGMVGIIQQEGTESCDPENTRTKKGQDCDSGSEPEGDNWYPTNMEELVTVDEVGEEDFIMEPDLPELEE
IVPIDQDKTLPKICTCVTATLGLDLAKDFTKQGETLGNDAELSLKLPQVPTSTASCPNDTLEMPGL
NLDAERKPAESETGLSLEVSNCYEKEARGEEDSDVSLAPAVQQMSSPQPADERARQSSPFLDDCKARGSP
EDGSHEASPLEGKASPPTESDLQSQACRENPRYMEVKSLNVRSPFEAEELKEPLSLPSWEPEVFSLSI
PLGVEFVVPRTGFYCKLCLGFYFSEEAAKVSHCRSTVHYRNLQKYLSQLAEGLKETEGTDSPSPERGGI
GPHLERKKL
```

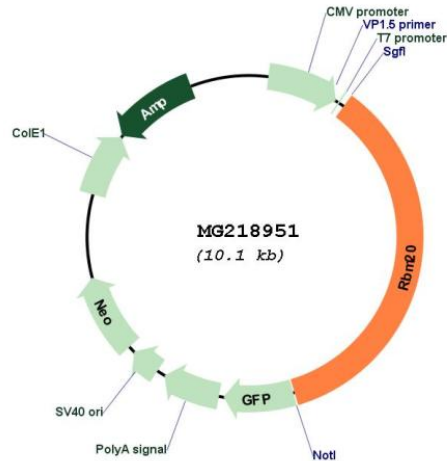
TRPLE - GFP Tag - V

Restriction Sites: SgfI-NotI

Cloning Scheme:

Cloning sites used for ORF Shuttling:



Plasmid Map:


ACCN: NM_001170847

ORF Size: 3597 bp

OTI Disclaimer: The molecular sequence of this clone aligns with the gene accession number as a point of reference only. However, individual transcript sequences of the same gene can differ through naturally occurring variations (e.g. polymorphisms), each with its own valid existence. This clone is substantially in agreement with the reference, but a complete review of all prevailing variants is recommended prior to use. [More info](#)

OTI Annotation: This clone was engineered to express the complete ORF with an expression tag. Expression varies depending on the nature of the gene.

Components: The ORF clone is ion-exchange column purified and shipped in a 2D barcoded Matrix tube containing 10ug of transfection-ready, dried plasmid DNA (reconstitute with 100 ul of water).

Reconstitution Method:

1. Centrifuge at 5,000xg for 5min.
2. Carefully open the tube and add 100ul of sterile water to dissolve the DNA.
3. Close the tube and incubate for 10 minutes at room temperature.
4. Briefly vortex the tube and then do a quick spin (less than 5000xg) to concentrate the liquid at the bottom.
5. Store the suspended plasmid at -20°C. The DNA is stable for at least one year from date of shipping when stored at -20°C.

RefSeq: [NM_001170847.1](#), [NP_001164318.1](#)

RefSeq Size: 6607 bp

RefSeq ORF: 3600 bp

Locus ID: 73713

UniProt ID: [Q3UQS8](#)

Cytogenetics: 19 D2

Gene Summary:

RNA-binding protein that acts as a regulator of mRNA splicing of a subset of genes involved in cardiac development. Regulates splicing of TTN (Titin).[UniProtKB/Swiss-Prot Function]