

## Product datasheet for **MG218938**

### Alpk1 (NM\_027808) Mouse Tagged ORF Clone

#### Product data:

Product Type:	Expression Plasmids
Product Name:	Alpk1 (NM_027808) Mouse Tagged ORF Clone
Tag:	TurboGFP
Symbol:	Alpk1
Synonyms:	8430410J10Rik; LAK
Mammalian Cell Selection:	Neomycin
Vector:	pCMV6-AC-GFP (PS100010)
E. coli Selection:	Ampicillin (100 ug/mL)
ORF Nucleotide Sequence:	>MG218938 representing NM_027808 Red=Cloning site Blue=ORF Green=Tags(s)

TTTTGTAATACGACTCACTATAGGGCGGCCGGAATTCGTCGACTGGATCCGGTACCGAGGAGATCTGCC  
GCC**CGATCGCC**

ATGAATAATCAAGATGCCGTGGCTTCGATACTGCATGAGTGCAAGCAAGTCTGGATCGTCTTTGTTGG  
AAACGCCAGATGTGTCTACAGAGGACAAGAGTGAGGACCAGCGGTGCAGAGCTTCACTCCCAGCGAGTT  
AAGGACCTGATCCAGGAGGCAGAGGAAATGAAGTGGCCCTTCGTGCCTGAAAAGTGGCAATACAAACAA  
GCCATGAGCCCAGAGGACAAAACAAACCTGCAAGATGTGATTGGCGCCGGCTGCAGCAGTTACTGGCGG  
CCTTGCAGCCTCCATCCTTGTCCAGGACTGCGCTGCCGCTCCGCTATTGTCTTTGATGGACCGGTT  
CCTGTATGGACTCGACGTCTCCGAAAACCTCCTGCAGGTCGCCAAAGGCTTGCACAAGCTGAAGCCTGCA  
ACGCCATCGCCCCGAGGTGGTCATCCGACAAGCCCGAGTCTCCGTCAACTCAGGAAAACCTGTTGAAGG  
CAGAATACATCCTGAGCAGCCTGATAAGCAACAACGGAGCAACCCGGACCTGGCTGTATAGGAATGAGAG  
TGACAAAGTCTGGTACAGTCGGTCTGCATACAGATCAGAGGGCAGATTCTGCAGAAGCTAGGCATGTGG  
TATGAAGCGGCAGAATTGATATGGGCCCTGTGCATAGGATATCTGACACTCCCTCAGCCAGATAAGAAGG  
GCATTTCCACATCACTGGGCATACTGGCAGACATCTTTGTTTCCATGAGCAAAACCGATTATGAAAAGTT  
TAAGAAGAGCCCCAAAGGTTAACTTGGCCCTGCTCAAGGAGTTTGACCACCATTTGTTGTCAGCCTCGGAA  
GCCTGCAAGCTGGCAGCTGCCTTCAGTGCCTACACCCCCTTTTGTGCTCAGCGGTGTAATATCCGTG  
GCACATGTTTGTGTCATATAGCTGTTCTGCTGACTGCCCTCCGGGAATGAAAAGTGTGCATCTGTGTGA  
AGCCAAAGAAGCTTTTGTGATTGGCCTCCTGACCAAGAAAGATGGCGAGCTGTTAGTGGCAAGCAGGAG  
CTGCACAGTTTCAAAAGCTGCTTTCGGCCTCACCACGGTGCCTCCAGACTCCATGGGGAGACAGATG  
CAGTTCGCGCAGCAAGGCAGCTATGCAGTGAAGCTGTGGCAAGCTCTACACCTTCAGCACTTCCCCAC  
AAGCCAGGACAGAGAAGGCTGTCTCAGGAAATCATGTCTCTCATCAGCCAGGTGAAGGGACATCTACGA  
GTTCAAAGCTTCCAAATTTAGATGCTTGTCTTATGTCCAGAGAGTTTCAAGTGTGGTTTGTAGTCGAC  
TCATCTTGATGGACACGTGGATTTCCAACAAATCTTGAACCTATTCCAGCACCATACTTCAGTGTG  
TGAGGTATTTGAAAGCACTTGTGGGAACAGCAACCGCAACAGAGAGACAAAAATCGGAGTCTGTATT



[View online >](#)

ACCACTCTGAAGACAGAAACAAACACCGCAGATACTATGGTTGCTACTCTAGAGAGGGTGAGTTCCTCAAG  
ACAGCAGGAGTACAGCTTCTTCCAAAATGTCTAAGAAAGATCAAGGGAAGCTCCTCAAGAGAAAGGGGGAG  
AAGCTGGACCCATTCCAAGGCATTCCGAGTCTCCCTGGATCTAGATATGGAGACTGAGACTGAGCCACCA  
AATCACAGCAATGGAGGGACAGATGTTTTCAACAAGTCTCTGAGAGACAACCTAGCTCCTGTTCTTGGG  
GCAGACTGTCAGGGCTCAGCTCTCCACAAGCTGGGAGGAAGTGAAGTGCCTGTTGAGGATGTAGTAAG  
GAAAGGGTCTGGCCAAGAAGAGCATCCTGTGGAGGCGCAAAGCTCTGAGGCAGCGTCTGAGGAGCCCAAG  
AGGAACAGAAGCAGCAGAGCTGTGATTTGTCTTCAAAGCTCCGTGGTGTCTCTTTCAGACAACCTGGAG  
ATGACAACCTTAGAGTCTTACCAGTCAAGTACACAATCACACATCCATCCTTCTTCAATGCAAAGA  
TACTTGTGGCCTCGGGTGCAGGACTGGTAGAAACCGCTGAAGGATCTAGCAATACTTCTCTTCTAGTCC  
AGTCATTCGTGTGGTCTGATTCTGGTCTTGTCTAGTTCAGACAGGTTACGGATGTGACCACGAATC  
CTTCAGTTCAGGAAGAAGAACCCTCTGGAATAATGGGTGATGTCCAGAATCCAAGTATGACTGTAAAGA  
CTGGCACGGAGAAAAGAATGGGGAACTCGTGAATATGCACAGGGCCTGAATTAACATCTGCCCCC  
TCTTCGGTCGACCAGAAGGAGAAACAGCAGAAAGCACAGACGATGGACTATCACCTCTCAGGTAGCCC  
TGGGATGTTTGAAGGCAGCCATTCAATGTCTACGCGTAGGACTTCTTTCGGATGGGTGGTTCAAAA  
CGCTGACTCAGCAAAGACTGGCTGCTCAGTCAGAGACCAGACTGTCGACCCTGATGCCTCAACGGTGGAT  
GAGGAGGGCCAAATGCTTGACAGCACAGAGATCTGCTCCATTGGCCAAGATGGCGCTCACAGACCAGTG  
CTTTGAGGTCCGGTCAGAGTGCAGGAGGGGCCAAAGTCTTTGTAATGGCTCCAGTCTTCCCCTATCTT  
CGATGAGGACTTCAGCACCACAGAGGAAGGAGAGGAGCTTGGGAGCATGCTGAAGAGCAGCCAAAACCTC  
AGCTCATACTACCATGGTGGCTAAAATCACAGCCTTTTCCCGCAGTTCGTGAGTGGGAAAGCTCCT  
GGTCTCTGCTGAACCAAGCAGAAGTTCCTTCGCTCGCTGGCAGGACAGACCAGTCAAGAGATCCTTGA  
GGCTCGAACCCACAGCCTGATGACCTTGAAGTCTTCTGGCGGGCGTGAGGCATGATTGGCTGCTTCA  
AGACTGGAGAATACTGGCGTTTTGAAGTCCAATCACTCCAACAAGCCCACAGTGCCTTCTGCTAAAAT  
ATTCAAAAAGTCTGAGTTGTGGACAGCGCAGGAAACTGTGGTGTATCTGGGAGACTACCTGAAAGTGAA  
GAAGAAGGGCAAGCAGAGAAATGCATTTTGGGTCCACTATCTCCATCAAGAGGAAACCCTGGGGAGATAC  
GTTGGGAAAGAATACAAAGAGAGGAAGGGCTCCGGCACCACTTCACTGATGTGGAGCGGAGATGACAG  
CACAGCACTACGTGACAGAGTTTAAACAAGAGACTCTACGAGCAAAAGATTCGACTCAGATATTCTACAT  
CCCCTCTACAATATTACTGATTTTGAAGACAGGACTATAAAGGGATGCATCAGTGTAGAGCCTTACATC  
CTGGGGGAATTCGTCAAGTTATCCAATAACACCAAAGCAGTCAAAAATGAGTACAAGCTACAGAATATG  
GCTTGGCCTATGGCCATTTTCTTATGAGTTTTCTAACCATAGAGATGTGGTGGTTGATTTACAAGGTTG  
GGTACTGGTAATGAAAAGGCCTGATCTATCTCACGGATCCTCAGATTCCTGCTAGACCAGAAAGAT  
GTCACTACAACTTTGAAAAGCGGGGAATATTTTACTTCTTAATAACCAACATGCAAGCTGTAATGAAA  
TATGCCATCGTCTTCTCTGACTAGACCTCACTAGAGCAACAAGTAAGGTA

AGCGGACCGACGCGTACGCGGCCGCTCGAG - GFP Tag - GTTTAA

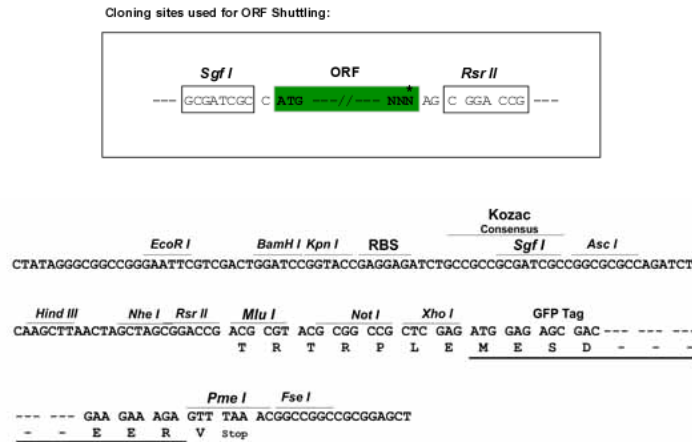
Protein Sequence: >MG218938 representing NM\_027808  
 Red=Cloning site Green=Tags(s)

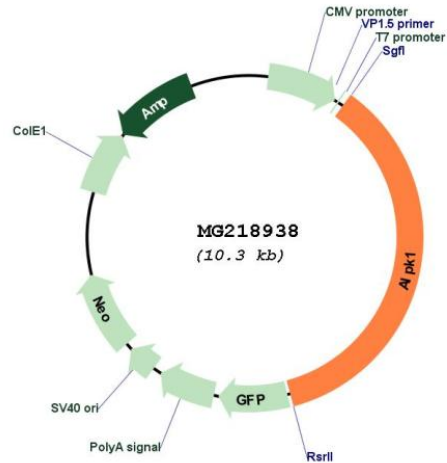
MNQDAVASILHECKQVLDRLLETPDVESTEDKSEDQRCRASLPSELRTL IQEAEEMKWPVFPEKWQYKQ  
 AMSPEDKTNLQDVI GAGLQQLLAALRASILVQDCAAASAI VFLMDRFL YGLDVSGKLLQVAKGLHKLKPA  
 TPIAPQVVIRQARVSVNSGKLLKAEYILSSLISNNGATGTWLYRNE SDKVLVQSVCIQIRGQILQKLGW  
 YEAELI WASVIGYLTLPQDPKGI STSLGILADIFVSMKTDYEKFKKSPKVNALLKEFDHLLSASE  
 ACKLAAAF SAYTPLFVL TAVNIRGTCLLSYSCS ADCPPGMKSVHLCEAKEAFEIGLLTKKD GELVSGKQE  
 LHSFIKAAFGLTTVHSRLHGETDAVRAARQLCSEAVGKLYTFSTSPTSQDREGLSQEIMSLISQVKGHLR  
 VQSFPNLDACSYVPESFKCGLDRLILHGHVDFQQILETYSQHHTSVCEVFESTCGNSKRNRQRTKSEVCI  
 TTLKTETNTADTMVATLERVSSQDSRSTASSKMSKDKQGLQRERGRSWTHSKAFRVSLDLDMETETEP  
 NHSNGGTDVFNKSLRDNSSCSWGRLSGLSSSTSWEVNCVAVQDVVRKGGSGQEEHPVEAQSSEAASEEPK  
 RNRSSRAVYLSKLRGVSLQTTGDDNLESSPSQLHNHTSILPFAKDTCLASGAGLVETAEGSSNTSLQS  
 SHSCGSDSWLSSDRF TDVTTNPSVQEEEP SGIMGDVPE SKYDCKDWHGEKNGGTLAEICTGPELTSAP  
 SSVDPGEETAESTDDGLSPSQVALGCEGSHSMSTRRTFFPDGVSQNADSAKTGCSVRDQTVDPDASTVD  
 EEGQMLDSTEICSIGQDGAHRPRALRSGQSAEGPKSFVNGSSPSPIFDEDFSTTEEGEELGSMLKSSQNS  
 SSYSPWWLKSPA FSRSSSDGESSWSLLNRSRSSFASLAGQTSQEILEARTLQPDDLEKLLAGVRHDWLLQ  
 RLENTGV LKSNLQQAHSALLLKYKSELWTAQETVVYLGDYLVKVKK GKQRNAFWVHYLHQEETLGRY  
 VGKEYKERKGLRHHFTDVERQMTAQHYVTEFNKRLYEQKIPQIFYIPSTILLILEDRTIKGCISVEPYI  
 LGEFVKLSNNTKAVKNEYKATEYGLAYGHFSYEF SNHRDVVDLQGWVTGNGKGLIYLTDPQIHSVDQKD  
 VTTNFGKRGIFYFFNNQHASCNEICHRLSLTRPSLEQTSKV

SGPTRRRLE - GFP Tag - V

Restriction Sites: SgfI-RsrII

Cloning Scheme:



**Plasmid Map:**


**ACCN:** NM\_027808

**ORF Size:** 3693 bp

**OTI Disclaimer:** Due to the inherent nature of this plasmid, standard methods to replicate additional amounts of DNA in *E. coli* are highly likely to result in mutations and/or rearrangements. Therefore, OriGene does not guarantee the capability to replicate this plasmid DNA. Additional amounts of DNA can be purchased from OriGene with batch-specific, full-sequence verification at a reduced cost. Please contact our customer care team at [custsupport@origene.com](mailto:custsupport@origene.com) or by calling 301.340.3188 option 3 for pricing and delivery.

The molecular sequence of this clone aligns with the gene accession number as a point of reference only. However, individual transcript sequences of the same gene can differ through naturally occurring variations (e.g. polymorphisms), each with its own valid existence. This clone is substantially in agreement with the reference, but a complete review of all prevailing variants is recommended prior to use. [More info](#)

**OTI Annotation:** This clone was engineered to express the complete ORF with an expression tag. Expression varies depending on the nature of the gene.

**Components:** The ORF clone is ion-exchange column purified and shipped in a 2D barcoded Matrix tube containing 10ug of transfection-ready, dried plasmid DNA (reconstitute with 100 ul of water).

**Reconstitution Method:**

1. Centrifuge at 5,000xg for 5min.
2. Carefully open the tube and add 100ul of sterile water to dissolve the DNA.
3. Close the tube and incubate for 10 minutes at room temperature.
4. Briefly vortex the tube and then do a quick spin (less than 5000xg) to concentrate the liquid at the bottom.
5. Store the suspended plasmid at -20°C. The DNA is stable for at least one year from date of shipping when stored at -20°C.

RefSeq: NM\_027808.1, NP\_082084.1  
RefSeq Size: 4795 bp  
RefSeq ORF: 3696 bp  
Locus ID: 71481  
Cytogenetics: 3 G2