

Product datasheet for **MG218932**

Uts2 (NM_011910) Mouse Tagged ORF Clone

Product data:

Product Type: Expression Plasmids
Product Name: Uts2 (NM_011910) Mouse Tagged ORF Clone
Tag: TurboGFP
Symbol: Uts2
Synonyms: pre; prepro-Ull; Ucn; Ucn2; Ull
Mammalian Cell Selection: Neomycin
Vector: pCMV6-AC-GFP (PS100010)
E. coli Selection: Ampicillin (100 ug/mL)
ORF Nucleotide Sequence: >MG218932 representing NM_011910
Red=Cloning site Blue=ORF Green=Tags(s)

TTTTGTAATACGACTCACTATAGGGCGGCCGGAATTCGTCGACTGGATCCGGTACCGAGGAGATCTGCC
GCC**CGATCGCC**

ATGGACAGGGTGCCCTTCTGCTGCCTGCTCTTCATAGGACTTCTGAATCCACTGCTGTCCCTTCCCCTCA
CGGACTGTTGAGAGGACTCTTCAGCTCCAGTCTTGAGGAAGACGCTCTTCGGGCTCTGGAGGAGCT
GGAGAGGATGGCCCTCTGCAGACCCTGCGTCAGACCATGGGCACGGAAGCAGGGGAGAGCCCTGGAGAA
GCAGGTCCAGCACTGAGACTCCACTCCACGGGAAGCATGAGGAAGGCTTTCGCTGGGCAAAATCTA
ACACTGTACTGAGTCGTCTCTTGCAAGAACCAGGAAACAACATAAGCAACACGGGGCTGCCCCAGAGTG
CTTCTGAAATACTGCATT

ACGCGTACGCGGCCGCTCGAG - GFP Tag - GTTTAA

Protein Sequence: >MG218932 representing NM_011910
Red=Cloning site Green=Tags(s)

MDRVPFCLLLFIGLLNPLLSLPVTDGERTLQLPVLEEDALRALEELERMALLQTLRQTMGTEAGESPGE
AGPSTETPTPRGSMRKAFAQNSNTVLSRLLARTRKQHKQHGAAPCEFVKYCI

TRTRPLE - GFP Tag - V

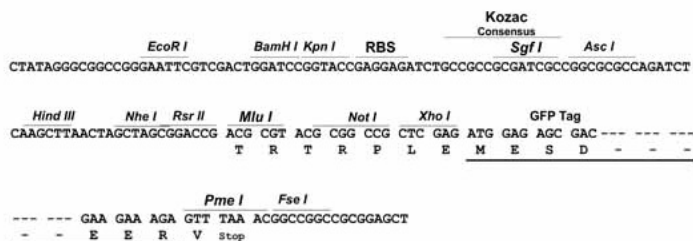
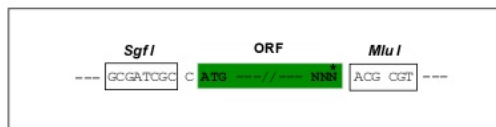
Restriction Sites: Sgfl-MluI



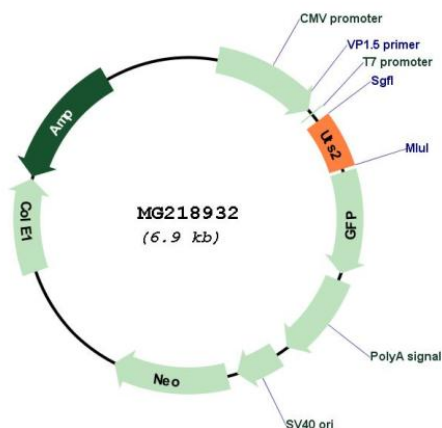
[View online »](#)

Cloning Scheme:

Cloning sites used for ORF Shuttling:



Plasmid Map:



ACCN:

NM_011910

ORF Size:

369 bp

OTI Disclaimer:

The molecular sequence of this clone aligns with the gene accession number as a point of reference only. However, individual transcript sequences of the same gene can differ through naturally occurring variations (e.g. polymorphisms), each with its own valid existence. This clone is substantially in agreement with the reference, but a complete review of all prevailing variants is recommended prior to use. [More info](#)

OTI Annotation:	This clone was engineered to express the complete ORF with an expression tag. Expression varies depending on the nature of the gene.
Components:	The ORF clone is ion-exchange column purified and shipped in a 2D barcoded Matrix tube containing 10ug of transfection-ready, dried plasmid DNA (reconstitute with 100 ul of water).
Reconstitution Method:	<ol style="list-style-type: none">1. Centrifuge at 5,000xg for 5min.2. Carefully open the tube and add 100ul of sterile water to dissolve the DNA.3. Close the tube and incubate for 10 minutes at room temperature.4. Briefly vortex the tube and then do a quick spin (less than 5000xg) to concentrate the liquid at the bottom.5. Store the suspended plasmid at -20°C. The DNA is stable for at least one year from date of shipping when stored at -20°C.
RefSeq:	NM_011910.2 , NP_036040.1
RefSeq Size:	538 bp
RefSeq ORF:	372 bp
Locus ID:	24111
UniProt ID:	Q9QZQ3
Cytogenetics:	4 E2
Gene Summary:	This gene encodes a member of the urotensin family of peptide hormones. The encoded preproprotein undergoes proteolytic processing to generate a mature, functional hormone before secretion into the plasma. Mice lacking the encoded protein have a significantly decreased low density lipoprotein cholesterol profile and hepatic steatosis that is consistent with decreased hepatocyte de novo cholesterol synthesis and apolipoprotein B secretion. [provided by RefSeq, Sep 2016]