

Product datasheet for **MG218925**

Jmjd1c (NM_207221) Mouse Tagged ORF Clone

Product data:

Product Type:	Expression Plasmids
Product Name:	Jmjd1c (NM_207221) Mouse Tagged ORF Clone
Tag:	TurboGFP
Symbol:	Jmjd1c
Synonyms:	5430433L24Rik; D630035I23Rik; Jmjd1c; TRIP8
Mammalian Cell Selection:	Neomycin
Vector:	pCMV6-AC-GFP (PS100010)
E. coli Selection:	Ampicillin (100 ug/mL)
ORF Nucleotide Sequence:	>MG218925 representing NM_207221 Red=Cloning site Blue=ORF Green=Tags(s)

TTTTGTAATACGACTCACTATAGGGCGGCCGGAATTCGTCGACTGGATCCGGTACCGAGGAGATCTGCC
GCC**CGATCGCC**

ATGGCGGTGGAGACGCGGCCGAGCTGGTGGGAAGCGGTTCTGTGCGTGGCGGCCGGCGAGGACGCGC
GTCCGGAGCGGGCAGAGCGGCTGCGGGCGGGCTGGCGGGCGGGGTTCATCCGAGCCGTGCCACCG
CGACCGCGGCCACCCGGACCTGGCGGTCTACGTGGAATTTGATGACCTTGAGTGGGATAACGGGAGTGG
GTTAGAGTTTATGAAGATTTTTCACTTTCTTGGTGAATATCACTTAATCTGGGCCAAAAGGAAGGACC
CTAGCCAGACTCAGGGATCAAAGAGCAGACAAATTCAGTGGCCTGCACTGACCTCAAACCATTGGTTGA
AAATAGTATACCTAGTTCTATCACTGCAGTAGAATTCCTTATAGATAAGCAACTGGATTTTTAACAGAA
GATAGTGCCCTTCAGCCATACCAGGACGACATAGACAGCTAAAGCCCGTACTCAGGACAAACCCACAGC
TGCACGCGGAAGTGAAAGTCTGGGTGAAGGAACAGAAGGTCCAGGAGATTTTTATGCAAGGTCTTATTC
ATTAATGGATACAGAGTGAGAGTCTATAGACAAGATTCTGCCACCCAGTGGTTTACTGGCATAATTACT
CATCATGATCTTTCACCCGCACCATGATCGTTATGAATGATCAGGACTAGAACACAGAATGTCGATC
CTTCTATGGTTCAAATGACCTTTCTAGATGATGTCGTTCACTCTTTGTTAAAAGGTGAAAATATTGGCAT
TACATCACGGCGAAGGTCTCGTGCCAGTCAAAATATCAGCACTGTTACGGTCATTATACACGTGCTCAA
GCAAATAGTCCCAGACCAGCAATGAACCTCAAGCTGCTGTACCAAACAGAACACACCAGCAACAGC
AACAAAGAAGTATTCGTCCAAATAGAGGAAGGGTTCAGATAGCAGCATACCCGATGAAGAGAAGATGAA
GGAAGATAAATATGATTGTGTATCACGAGGAGAAAATCCTAAAGGTAAGAACAAGCACGTGGTGAAAAA
CGGCGGAAACCTGAGGAGCCGAGAAGAGGCTGAGCATGAAAAGGCTCCGGACAGACAATGCCTCTGACG
CCTCCGAGAGCAGTGACGCAGAGAGCTCCAGCAAGAGAGTGACTGAGACTTCTCCTCTGAACCAATGCC
AGAGTATGAACCGAAAAATAAGTCACCTCAAAGGTAATGGAGAGGAGGGACAGTCCCAGGCTGCTGAA
GAGGCAGGAGAAGAGACCCTGATAGATACTCGGCCTCCCTGGGACCAGATGCAGGAAGATAAAAACCACA
ACGAAGGGGAGAAGCCCAAGTCCACGGACGCCACCTTCAAGACAAAATGACTCTCGGTTTCTGAGCA
AGCCACAGTTGCTGACCACAATTCTAATGATTCAGTCCTCAAGAATGCAATGTGAAAAACCAACGCACA



[View online »](#)

GTGGAATTATTACCAAAGGACAGGTTAGTGTCCAGAACACCGACACCCAAATGTGTTACGGATATCAAGA
 ACGACTCATTCTGAGAGGGCGGCTCAGGAAAATTTAAATACTTTTGGCCTCCAGACACCTGAGAACAT
 GGATCCAAATGTTAGTGATTCCAAACATTCAAATGCTAAATACCTAGAAACAGCAAAGCAAGATTGTGAC
 CAGAGCTGGGTCACTGATGTAGTGAAAGTGATTTAACTCAGTCAAGTGTACAAATGCTCCTCAGGAA
 GTGATAAGCGGATACGGAGAAAAGAGAAAATCACTATGTCTCATACATGTCTTCAATAGTGCAGTTTC
 TGTCACAGAGGATCAGCTACATAAACGAAGTCCACCCCAAGAACTATAAAAGCTAACTAACTACTTCA
 GTAGATACCCAGAAGGCAAAATCCAGTTCTTCCACTGAAGTTGTTAAACCCAAGTCACTACTTCTCTG
 ATTCTGTGAAGTCTAAAGCTGCTTATGGGAACAGTCAAGCTGTTGGTGAGCGAAGGCTGGCAAATAAAAT
 AGAGCATGAGTTATCCAGAGGTAGTTTCCATCCAGTTCCTACTCGAGGCAGTGCTTTGAAAACATAAAG
 AGCCCTCTTATCATTGATAAAAAACGAGCACTTCACAGTCTATAGGGATCCTGCTCTTATTGGATCAGAAA
 CAGGAGCTAATCACATTTACCTTTTTGAGCCAGCATCCTTTTTCTTCTTATTCTCATCCATAGAAC
 CTGTTTAAACCCAGTACCCATCACCTGCCTAACGCCAGGACCCACTACTAGCTGGTCAACTAGT
 CAAACTCCATTACCTACCATTAACTCACCTCTCACTAGTGGTCCACACCATCTGTCCATCACCTC
 ATTTGCTTCCACTGTGTACCTGGAGTGCCTACTGCCTTTACTCGGTGGCCACCCACGTCTAGAGAG
 TGCTCATGCAAGCAGCTTGAAGCATTAGCACTAGCACACCAGCAGCAGCAACAGTTGTTACAGCACCAG
 TCACCTCATCTTCTGGACAAGCCATCCTTCCGCTTCATATAATCAGCTTGGACTTTATCCAATTTT
 GGCAATATCCGAATGGAACACATGCATACTCAGGACTTGGTCTCCCTTCTTAAGTGGGTTACCCAGA
 AAATGCAGTTAATGCTGAAGCTTCAATTAAGGAGGAATTCTCCAGTCTTGGCTACATCAACCCACTCCT
 GTGACCTCAGCGGATGGTATTGGATTACTTAGTCACATTCCTGTGACACCTTCCAGTGCAGAGCCTCATC
 GACCTCACAAGATTACAGTGCATTCCAGTCCCCACTGACAAAGACATTAGCAGATCACCACAAAGAAGA
 ATTGGAGAGGAAAGCTTTTATGGAACATTACGGTCTAATGCATCCACATCAGTAAAAGGTGACCTGGAT
 CTTAATAGGTACAGGCAGGAAAAGATTGTCACTTGCATAGGCATTTTGGGTCCAAGGCCACCCAGG
 AGACTGGAGAGAGACTGAACAAATACAAGGAGGAACATCGTCGGATTCTCAGGAGAGATTGATGTGGC
 TCCATTTACAACCAAAATCAAGGTCATGAGGTTGAAAGAGAGAATTACTCCAGAGTAGTACCATCATCT
 TCTAGTCTAAAAGCCATGCTATCAAACAGATAAAGACGTAGACCGCTCCGTGTGAGAGATTTATAAGA
 TGAAGCACTCAGTGCCTCAGAGTTTGGCCAGAGTAACTACTTCACTACTTTATCTAATAGTGTGGTCAA
 TGAGCCACCAAGATCCTACCCATCCAAAGAAGTTTCCAACATTTACTGAGAAACAAAATAATAACCTT
 TCTGCAACAGCCAATCCTCAAATCATTCTTTATATCATCTTTTGAAGCCTCCACCTTTGATTAAC
 ACCAACAGAAAGTGAAGTTTGTGGCAAGTACCAGACCATCTCCCATCAGAGTGCATCTCACTC
 AGTAACAACGTTCAAGAGTATTGTGCGAGCCCTACCCATCTGACTGTTTCTTCTACTAATGCACCTCCG
 AGCATGCCTGCTCTGCACAGGGCACCAGTATTCCATCCCAATCCACCAGTTTGGAAAGAAAGGAAA
 GCAGCTACAGTAGCCTTTCCCTCCAACACTGACACCGGTGATGCCAGTAAATGCTGGTGGCAAAGTTCA
 AGAATCTCAGAAGCCTCAAATCTAATCTGAGCCAAAAGACTCTCAGTCAAATTTAAGAATTTCTTCT
 GATCAGAGTCTAACGAAATGTGGAGATCTAATAACAACCTCAACAGAGAGAAAGCTGAGTGGCCCGTGG
 AAAAGAGTAGTGGAAAGTCCCAGGCTGTGTGGCATCTGTATTGTTTCGTCACCTTCTAGTACAAAAGT
 TGATAGTGTGCCATCTGTACCATTAGCTTCAAAGATCGAGTTTGTGAAAGATCTTATCTGGGGCAAAAT
 AAAACAGATTACCTCAAACAGAAAGCCGGAGAGACTGGAAGAATTATTCTACCAATGTGAATTTAGAAA
 GTGCTCATGTGAAATCTGAAAAAACTTTGAAGCTGTCTCCAGGGCAACGTTCTGTTTTCAGTCAATGC
 TGCTGTAATGTAGTCTACTACCAAAGCAGATGTGTTTCACTGCTGCCACTACCACAGTGTCTCC
 AGCTTGAGTAGTGCAGAAACAAGTTATTCTTTATCAAATACCATTTCCGGCTCTACACCTTCAAGTGA
 CTCTTCAAAGTGTGTTAGTCAGGCAGTGGCGCAAGCAAAGGACTGCACAGTCAAGCACCAGGTTCC
 AGGCACCTGGCCTGTAGTAAGACAGGAAGTGTGTTAGCCCGCTCTGGCTTCTCAGGCACAAGTGTGAT
 TTTATTCTTTAAAAAGCACAAGGCAGCGTTGGCTGCAGCTCAGTTAAAAATAGTAGTGTGAGTGTGAGG
 CTGAACCTAATACTGTGAGAAATCAGACAGTGGCAGCCTCTTCCCTGGATAGCACCATGACCTGCAC
 TGCAAGTAACAAGCAATCTCTGTAGGAAATGGCCAGCAGCCAGTCCAGTCAAGCCAACTACCACACT
 AAAGTGAAGAAGGCTGGCTCACCAGACATTGAGAAGAAGATAAAAATACTAATAAAATGAAAAATTCAG
 GGAATTTGTATCCGAAATTTAAGCCATGTTCTGTCAACTTAATAGCCTCTACATCTAATGATATAGA
 AAATCGTGCAGATGGCAGAGTCTGTAGATAAATATGGAAGAGATGAGAAAGTCAAGCAGGAGAAAAGCC
 AAAAGAATTACGAATCTGGCTCTGAAAGTGGAGACTCAGATGAGAGCGAAAGCAAGTCCGAGCAGAGGA
 CTAACCGCAGCCGAAGCCAATTTAAAAAGAAGCAGAACGACCTGCAGAAAGAGAAAGGCGAGGTCGA
 AGAGGACTCGAAGCCTAATGGAGTTCTCAGCAGGAGCGCAAGGACAAAAGTAACTGAAGTTGCAGAAC
 AGTAATACTGGCGTTCTCGTCCGTGCTGAAAGACTGGCGGAAGGTCAAGAAGTGAAGCAAATGGAG

Protein Sequence: >MG218925 representing NM_207221
 Red=Cloning site Green=Tags(s)

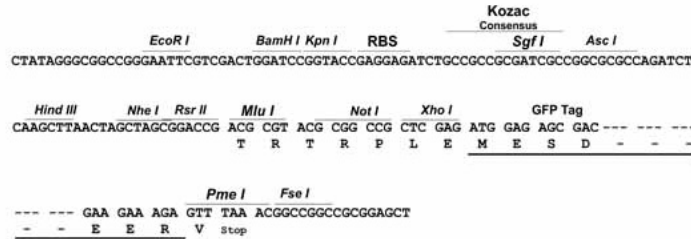
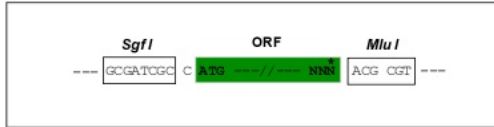
MAVETRPELVGKRFLLCVAAGEDARPERGQSGCGRGWRAGVIRAVSHRDRGHPDLAVYVEFDDLEWDKREW
 VRVYEDFSTFLVEYHLIWAQRKDPSTQGSKSRIQWPALTFKPLVENSIPSSITAVEFLIDKQLDFLTE
 DSAFQPYQDDIDSLKPVLRDNPQLHAEVKVWVKEQKVQEIFMQGPYSLNGYRVRVYRQDSATQWFTGIIT
 HHDLFTRTMIVMNDQVLEPQNVDPMSVQMTFLDDVVHSLKGENIGITSRRRSRASQNIQSTVHGHTYTRAQ
 ANSPRPAMNSQAAVPKQNTHQQQQSRIRPNKRKGSDDSSIPDEEKMEDKYDCVSRGENPKGKNKHVVTK
 RRPKEEAERLSMKRLRTDNASDAESSDAESSKRVTETSSSEPMPEYEPKNKVTSKVNGEEGQSQAAE
 EAGEETLIDTRPPWDQMVEDKNHNEGEKPKSTDSHLQDKMTRLRSSEQATVADHNSNDSVLQECNVENQRT
 VELLPKDRLVSRTPPKCVTDIKNDTHSERAAQENLNTFGLQTPENMDPNVSDSKHSNAKYLETAKQDCD
 QSWVSDVVKVDLQSSVTNAPSGDKRDEKERNHYVSYMSSLAVSVTEDQLHKRSPPETIKAKLTTS
 VDTQKAKSSSSPEVVKPKITHSPDSVKSKAAYGNSQAVGERRANKIEHEL SRGSFHPVPTRGSALETTK
 SPLIIDKNEHFTVYRDPALIGSETGANHISPFLLSQHPFSLHSSSHRTCLNPGTHHPALTPGPHLLAGSTS
 QTPLPTINTHPLTSGPHHPVHHPHLLPTVLPVPTASLLGGHPRLSAHASSLSHLALAHQQQQQLLQH
 SPHLLGQAHPASYNQLGLYPIIWQYPNGTHAYSGGLPSSKWHPENAVNAEASLRNNSPSPWLHQPTP
 VTSADGIGLLSHIPVRPSSAEPHRPHKITVHSSPPLTKTLADHHEELERKAFMEPLRSNASTSVKGDLD
 LNRSQAGKDCHLHRHFGVPRPPQETGERLNKYKEEHRRILQESIDVAPFTTKIKGHEVERENYSRVVPS
 SSPKSHAIAKQDKDVRVSEIYKMKHSVPQSLPQSNYFTTLSNSVNEPPRSYPSKEVSNIIYTEKQNNL
 SATANPQTHSFISSLKPPPLIKHQPESESLVGKIPDHLPHQSASHSVTFRSDCRSPHTLTVSSTNALR
 SMPALHRAPVHFPPIHHSLEKESYSSLSPPTLTPVMPVNAGGKVQESQKPTL IPEPKDSQSNFKNS
 DQSLTEMWRSNNLNREKAEPVEKSSGKQAASVIVRPPSSTKVDSVPSVPLASKDRVCERSSSGAN
 KTDYLLKPEAGETGRIILPNVLESAHVKSEKNFEAVSQGNVPSVMSAVNVVSTKADVFTAATTSVSV
 SLSSAETSYSLSNTISASTPFECTSSKSVVSQAVAAQAKDCTVSTAVPGTLACSKTGSVAVQPGSGFSGTTD
 F.IHLKHKAAALAAQFKNSSVSEAELENTVRNQTVAASLPLDSTMTCTASNKAISVNGPAAQSSQPNYHT
 KLKKAWLTRHSEEDKNTNMENSGNSVSEIIKPCSVNLIASSTNDIENRADGRVAVDKYGRDEKVSRRKA
 KRTYESGSESGDSESEKSEQRTKRQPKTYKKKQNDLQKRKGEVEEDSKPNGVLSRSADKSKLKLQN
 SNTGVPRSVLKDWRKVKLQKQGESFLQDDSCCEIGPNLQKCRECRLIRSKKGEESTHSPVFCRFYYFR
 LFSKNGVVRIDGFSSPDQYDEAMSLWTHENYEDDEVETSKYILDIIGDKFCQLVTSKALSWVKK
 DAKIAWRAVGVREMCDAEATL FNVHVVCRKCGFVACLDCYKAKERKSSRDKELYAWMKCVKGQPHDH
 KHLMLTQIIPGSVLTDLLDAMHILREKYGIKSHCHCTNRQNLQGGNVPTMNGVSQVLQNVLHHSNKTSVS
 LPESQQQNSPQKSQTNGNSSPGSASTDSRLTPPESQSPLHDLAEQKSREEKQENKEFTLEREIKEDG
 DQDASDSPNGSTSPASQSNEQGSTLRDLLTTTAGKLRVGSTDAGIAFAPVYMGTS SSGKGRTPMNIID
 DIIASVVENKIPNKTSKINIKSEPNEEPKESSLPATDESNSKSYRDIHPSWICDQHILWLKDYKNSNNWK
 LFKECWKQGPVAVVSGVHKKMNI SLWKAESISLDFGDHQADLLNCKDSIVSNANVKEFWDFEESVSRQK
 NKGGETVVLKLDKCPGDFKAMMPTRYEDFLRCLPLPEYCNPEGKFNLAHSLPGFFVRPDLGPRLC
 SAYGVAAAKDHDIGTTLNHLIEASDVVNVLVYVGIKAGNGVLSKAGILKFFEEEEELDDVLRKRLKDSSEIPGAL
 WHIYAGKDVDKIREFLQKISKEQGLEVLPEHDPIRDQSWYVNRKLRQLLEEYGVRACTLIQFLGDAIVL
 PAGTLHQVQNFHSCVQVTEDFVSPEHLVQSFHLTQELRLLKEEINYDDKLQVKNILYHAVKEMVRALKMH
 EDEVEDMEDT

TRTRPLE - GFP Tag - V

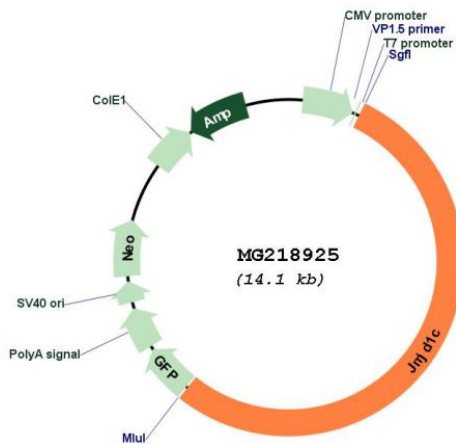
Restriction Sites: SgfI-MluI

Cloning Scheme:

Cloning sites used for ORF Shutting:



Plasmid Map:



ACCN: NM_207221

ORF Size: 7590 bp

OTI Disclaimer: The molecular sequence of this clone aligns with the gene accession number as a point of reference only. However, individual transcript sequences of the same gene can differ through naturally occurring variations (e.g. polymorphisms), each with its own valid existence. This clone is substantially in agreement with the reference, but a complete review of all prevailing variants is recommended prior to use. [More info](#)

OTI Annotation:	This clone was engineered to express the complete ORF with an expression tag. Expression varies depending on the nature of the gene.
Components:	The ORF clone is ion-exchange column purified and shipped in a 2D barcoded Matrix tube containing 10ug of transfection-ready, dried plasmid DNA (reconstitute with 100 ul of water).
Reconstitution Method:	<ol style="list-style-type: none">1. Centrifuge at 5,000xg for 5min.2. Carefully open the tube and add 100ul of sterile water to dissolve the DNA.3. Close the tube and incubate for 10 minutes at room temperature.4. Briefly vortex the tube and then do a quick spin (less than 5000xg) to concentrate the liquid at the bottom.5. Store the suspended plasmid at -20°C. The DNA is stable for at least one year from date of shipping when stored at -20°C.
RefSeq:	<u>NM_207221.3</u>
RefSeq Size:	8382 bp
RefSeq ORF:	7593 bp
Locus ID:	108829
Cytogenetics:	10 B5.1
Gene Summary:	Probable histone demethylase that specifically demethylates 'Lys-9' of histone H3, thereby playing a central role in histone code. Demethylation of Lys residue generates formaldehyde and succinate. May be involved in hormone-dependent transcriptional activation, by participating in recruitment to androgen-receptor target genes (By similarity). [UniProtKB/Swiss-Prot Function]