

Product datasheet for **MG218916**

Cdh8 (NM_007667) Mouse Tagged ORF Clone

Product data:

Product Type:	Expression Plasmids
Product Name:	Cdh8 (NM_007667) Mouse Tagged ORF Clone
Tag:	TurboGFP
Symbol:	Cdh8
Synonyms:	AI851472; cad; cad8
Mammalian Cell Selection:	Neomycin
Vector:	pCMV6-AC-GFP (PS100010)
E. coli Selection:	Ampicillin (100 ug/mL)



[View online »](#)

ORF Nucleotide
Sequence:

>MG218916 representing NM_007667
Red=Cloning site Blue=ORF Green=Tags(s)

TTTTGTAATACGACTCACTATAGGGCGGCCGGAATTCGTCGACTGGATCCGGTACCGAGGAGATCTGCC
GCCGCGATCGCC

ATGCCAGAAAGGCTAGCTGAGACGCTCATGGACCTCTGGACTCCATTAATAATATTATGGATTACCCTCC
CTTCTTGTGTATACACGGCTCCGATGAATCAGGCTCACGTTTTAACTACTGGATCCCTTTGGAAC TAAG
CAGGCAGAGTGAAGACATGCGGATTTTGTAGCCGCTCCAAAAGAGGCTGGGTTTGGAAATCAAATGTTTGT
CTGGAAGAATTTCTGGACCTGAACCGATTCTCGTTGGCCGTTACACACAGATCTGGATCCTGGAAGCA
AAAAATCAAGTATATCCTATCGGGTATGGAGCTGGCACAATCTTCAAATAAATGATATAACTGGAGA
TATCCATGCTATCAAAGACTTGACCGAGAGGAAAAGGCTGAATATACGTTAACGGCTCAGGCAGTGGAC
TTTGAGACAAACAAGCCCTTGAGCCTCCTTCTGAATTTATTATTAAGGTTCAAGATATCAACGACAATG
CACCTGAGTTCCTCAATGGACCTTATCATGCTACTGTTCCAGAGATGTCCATTTTGGGTACATCTGTAC
TAATGTAAC TCCACTGATGCTGACGACCCAGTTTATGAAAACAGTGCAAAGTTGGTTTACAGTATCTTG
GAGGGACAGCCGTATTTTCCATTGAGCCTGAAACAGCCATTATAAAAAC TGCCTTCTAACATGGACA
GAGAAGCCAAGGAGGAATACCTGGTCGTAATACAAGCCAAGATATGGGTGGACACTCTGGTGGTCTGTC
TGGAACCAACAACACTCACAGTGACCCTGACTGATGTTAATGACAACTCTCCAAAATTTGCTCAGAGTTTG
TATCACTTCTCAGTACCAGAAGATGTGGTCTTGGCACTGCGATAGGAAGGGTTAAGGCTAATGATCAGG
ATATTGGTGAAAATGCACAATCATCCTATGACATCATTGATGGAGATGGGACAGCACTATTCGAAATCAC
TTCTGATGCCAGGCCAGGATGGTGTATAAGACTGAGAAAAGCCTCTGGACTTTGAGACCAAAAAATCC
TATACTCTGAAGTGGAAGCAGCCAATATCCACATCGACCCAGTTTTCAGTAGCAGGGGACCCCTTAAGG
ATACAGCAACAGTCAAATTTGCTGTAGAGGATGCTGATGAGCCTCCGGTCTTCTCTCACCAACTACCT
CCTTGAAGTTCATGAAAATGCTGCTTTGAACTCTGTGATTGGCCAAGTGACAGCTCGTGACCCTGATATC
ACTTCCAGTCCAATAAGGTTTTCCATTGACCGCCACACTGACCTGGAAAAGACAGTTCAACATCAATGCAG
ATGATGGGAAGATAAAGCTGGCACTCCACTGGACAGAGAATAAGTGTGGCACAACATCACCATCAT
TGCTACTGAGATCAGGAACCACAGTCAGATATCTCGAGTGCCTGTTGCTATTAAGTGTGGATGTCAAT
GACAACGCCCTGAATTCGCATCCGAATATGAGGCATTTTATGTGAAAATGGAAAACCCGGCCAAGTCA
TTCAAACAGTAAGTGCCATGGACAAGACGATCCCAAAAACGGACATTTTTTCTGTACAGTCTTCTTCC
AGAAATGGTCAACAACCCAAATTTACCATCAAGAAAAATGAAGATAATCCCTGAGCATTCTGGCAAAA
CATAATGGATTCAACCGCCAGAAGCAAGAAGTCTACCTTCTGCCTATAGTGATCAGTGACAGTGGAAACC
CCCTCTGAGTAGCACCAGTACGTTGACCATCCGAGTCTGTGGCTGTAGCAATGATGGCGTGGTCCAGTC
GTGCAATGTTGAAGCTTATGTCCTTCTATTGGACTCAGTATGGGCGCCTTAATTGCTATATTAGCATGC
ATCATTTTGTGCTCGTCAATTGTGGTCTGTTTGTACCCTGAGGAGGCACAAAAATGAACCACTTATTA
TCAAAGATGACGAAGACGTTTCGAGAAAACATCATTGCTACGACGACGAAGGAGGAGGGGAGGAGGACAC
AGAGGCTTTTGCATTGCAACTTTGCAAAAACCCAGATGGAATTAATGGATTTTTACCCCGTAAGGATATT
AAACCAGATTTGCAGTTTATGCCAAGGCAAGGGCTTGTCCAGTTCCAAATGGTGTGATGTCGATGAAT
TTATAAATGTAAGGCTGCATGAGGCAGATAATGACCCACGCCCCACCATATGACTCCATACAGATTTA
TGGCTATGAAGGCCGAGGGTCTGTGGCTGGCTCCCTCAGCTCCTTGAGTCCACCACATCAGACTCAGAC
CAGAATTTTGACTACCTCAGTGACTGGGTCCCGCTTTAAGAGACTGGGCGAACTCTACTCTGTTGGTG
AAAGTGACAAAGAACT

ACGCGTACGCGGCCGCTCGAG – GFP Tag – GTTTAA

Protein Sequence: >MG218916 representing NM_007667
Red=Cloning site Green=Tags(s)

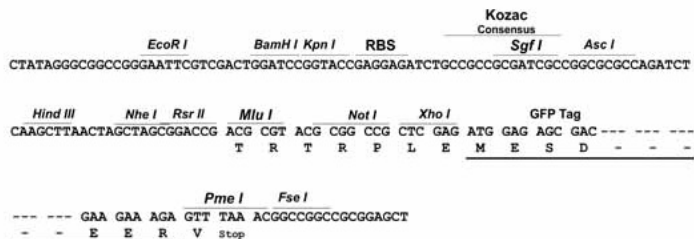
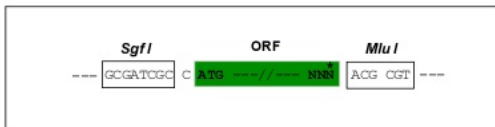
MPERLAETLMDLWTPLIILWITLPSCVYTAPMNQAHVLTGSPLELSRQSEDMRILSRSKRGVWVWVQMFV
LEEFSGPEPILVGRHTDLDPGSKKIKYILSGDGAGTIFQINDITGDIHAIKRLDREEKAEYTLTAQAVD
FETNKPLEPPSEFIIKVQDINDNAPEFLNGPYHATVPMSILGTSVTNVTATDADDPVYGNNAKL VYSIL
EGQPYFSIEPETAIKKTALPNMDREAKEEYL VVIQAKDMGGHSGGLSGTTTLTVTLTDVNDNPPKFAQSL
YHFSVPEDVVLGTAIGRVKANDQDIGENAQSSYDIIDGGDTALFEITSDAQAQDGVIRLRKPLDFETKKS
YTLKVEAANIHIIDPRFSSRGPFKDTATVKIVVEDAEPVVFSSPTYLLEVHENAALNSVIGQVTARDPDI
TSSPIRFSIDRHTDLERQFNINADDGKITLATPLDRELSVWHNITIIATEIRNHSQISRPVVAIKVLDVN
DNAPEFASEYEAFLENGKPGQVIQTVSAMDKDDPKNGHFFLYSLLPEMVNPNFTIKKNEDNSLSILAK
HNGFNRRQKQEVYLLPIVISDSGNPPLSSTSTLTIRVCGCSNDGVVQSCNVEAYVLPVIGLSMGALIAILAC
IILLLVIVVLFVTLRRHKNEPLIIKDEDEVRENIIRYDDEGGGEEDTEAFDIATLQNPDGINGFLPRKDI
KPDQLQFMPRQGLAPVNGVDVDEFINVRLEADNDPTAPPYDSIQIYGYEGRGSVAGSLSSLESTTSDSD
QNFYDLSDWGPRFKRLGELYSVGESDKET

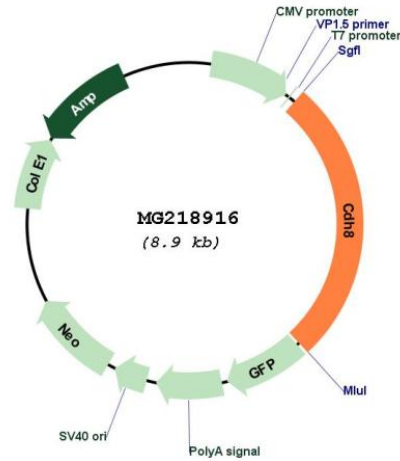
TRTRPLE - GFP Tag - V

Restriction Sites: Sgfl-MluI

Cloning Scheme:

Cloning sites used for ORF Shutting:



Plasmid Map:


ACCN: NM_007667

ORF Size: 2397 bp

OTI Disclaimer: The molecular sequence of this clone aligns with the gene accession number as a point of reference only. However, individual transcript sequences of the same gene can differ through naturally occurring variations (e.g. polymorphisms), each with its own valid existence. This clone is substantially in agreement with the reference, but a complete review of all prevailing variants is recommended prior to use. [More info](#)

OTI Annotation: This clone was engineered to express the complete ORF with an expression tag. Expression varies depending on the nature of the gene.

Components: The ORF clone is ion-exchange column purified and shipped in a 2D barcoded Matrix tube containing 10ug of transfection-ready, dried plasmid DNA (reconstitute with 100 ul of water).

Reconstitution Method:

1. Centrifuge at 5,000xg for 5min.
2. Carefully open the tube and add 100ul of sterile water to dissolve the DNA.
3. Close the tube and incubate for 10 minutes at room temperature.
4. Briefly vortex the tube and then do a quick spin (less than 5000xg) to concentrate the liquid at the bottom.
5. Store the suspended plasmid at -20°C. The DNA is stable for at least one year from date of shipping when stored at -20°C.

RefSeq: [NM_007667.3](#), [NP_031693.2](#)

RefSeq Size: 3158 bp

RefSeq ORF: 2400 bp

Locus ID: 12564

UniProt ID: [P97291](#)

Cytogenetics: 8 49.4 cM

Gene Summary:

This gene encodes a member of the cadherin family of calcium-dependent glycoproteins that mediate cell adhesion and regulate many morphogenetic events during development. The encoded preproprotein is further processed to generate a mature protein. Mice lacking the encoded protein exhibit reduced behavioral responses to cold, but not thermal stimuli. Alternative splicing results in multiple transcript variants encoding different isoforms that may undergo similar proteolytic processing. Multiple distinct genes of the cadherin family, including this gene, are found on chromosome 8. [provided by RefSeq, Oct 2015]