

## Product datasheet for **MG218914**

### **Cct3 (NM\_009836) Mouse Tagged ORF Clone**

#### **Product data:**

Product Type:	Expression Plasmids
Product Name:	Cct3 (NM_009836) Mouse Tagged ORF Clone
Tag:	TurboGFP
Symbol:	Cct3
Synonyms:	AL024092; Cctg; Tcp1-rs3; TriC-P5
Mammalian Cell Selection:	Neomycin
Vector:	pCMV6-AC-GFP (PS100010)
E. coli Selection:	Ampicillin (100 ug/mL)



[View online »](#)

**ORF Nucleotide Sequence:**

>MG218914 representing NM\_009836  
 Red=Cloning site Blue=ORF Green=Tags(s)

TTTTGTAATACGACTCACTATAGGGCGGCCGGAATTCGTCGACTGGATCCGGTACCGAGGAGATCTGCC  
 GCC**CGGATCGCC**

ATGATGGGCCACCGTCCAGTGCTCGTGCTCAGTACAGAACAAAGCGTGAATCTGGAAGAAAAGTTCAGT  
 CTGGAAATATCAATGCTGCAAAGACAATTGCAGACATCATCCGGACCTGCTTGGGACCTAAATCTATGAT  
 GAAGATGCTTTTGGACCAATGGGAGGCATCGTGATGACCAATGATGGCAATGCCATTCTTCGAGAGATT  
 CAAGTCCAGCATCCCGCAGCAAAGTCCATGATTGAAATTAGCAGGACCCAGGATGAAGAGTTGGAGATG  
 GGACCACATCAGTAATTATTCTTGCGGGAGAAATGCTCTCTGTGGCTGAACACTTCTAGAGCAGCAGAT  
 GCACCCAAACAGTGGTGATCAGTGCTTACCGCATGGCACTGGATGATATGATCAGCACTCTGAAGAAAATC  
 AGTACTCTGTTGATGTCAATAACCGTGAGATGATGTTGAGCATCATCAATAGCTCTATTACTACAAAAG  
 TCATCAGTCGGTGGTCTCCTTGGCATGCAACATTGCACTGGATGCTGTTAAGACTGTGCAGTTTGAAGA  
 GAATGGCAGAAAGAAATTGACATCAAAAAATATGCAAGGATAGAAAAGATACCCGGGGGCATCATTGAA  
 GACTCATGTGCTTACGTGGAGTTATGATTAACAAGGATGTGACCCATCCAAGGATGCGCCGCTATATTA  
 AGAATCCTCGAATTGTGCTATTGGATTCTCTTTGGAGTACAAGAAAGGAAAGCCAGACCCGACATCGA  
 GATTACCCGGGAGGAGGACTTACGCGGATCCTGCAGATGGAGGAGGAGTACATCCATCAGCTGTGTGAG  
 GACATCATCCAGCTGAAGCCTGACGTGGTATCACAGAGAAGGGCATCTCAGATTTAGCTCAGCACTACC  
 TCATGCGGGCCAAATGTCACAGCCATTCTAGAGTCCGGAAGCAGACAATAATCGCATTGCTAGAGCCTG  
 TGGGGCACGGATAGTCAGCCGACCTGAGGAACTGAGAGAAGATGATGTTGGTACAGGGGCAGGCTTATTG  
 GAAATCAAGAAGATTGGAGATGAGTACTTTACATTCATCACTGACTGCAAAGACCCAAAGGCCTGCACCA  
 TTCTTCTTAGAGGAGCCAGCAAAGAGATACTCTCGGAAGTAGAAGCAACCTCCAGGATGCCATGCCAAGT  
 GTGCCGCAATGTTCTACTGGACCCTCAGCTGGTGCCTGGTGGTGGAGCCCTGAGATGGCTGTGGCTCAT  
 GCCTTGACAGAAAAATCTAAGGCCATGACTGGTGTGGAACAATGGCCATATAGAGCTGTGGCCAGGCGT  
 TAGAGGTCATCCCTCGGACCTTGATCCAGAATTGTGGGGCCAGTACCATTCTGCTTACCTCCCTTCG  
 GGCCAAGCACACAGGAGAGTTGTGAGACCTGGGGTGTGAATGGTGGAGACTGGTACCTTGGTGGACATG  
 AAAGAGCTGGGTATTTGGGAGCCATTGGCTGTGAAGCTACAAACGTACAAAACAGCAGTAGAGACTGCAG  
 TTCTGCTTCTGCGGATTGATGACATTGTCTCTGGCCACAAGAAGAAGGATGATGACCAGAACCGGCAAAAC  
 TGGTGCTCCAGATGCTGGCCAGGAG

**ACGCGTACGCGGCCGCTCGAG** - GFP Tag - GTTTAA

**Protein Sequence:**

>MG218914 representing NM\_009836  
 Red=Cloning site Green=Tags(s)

MMGHRPVLVLSQNTKRESGRKVSQGNINAAKTIADIIRTCLGPKSMMKMLLDPMGGIVMTNDGNAILREI  
 QVQHAPAAKSMIEISRTQDEEVGDGTTSVIILAGEMLSVAEHFLEQMHPTVVISAYRMLDDMISTLKKI  
 STPVDVNNREMMLSIINSSITTKVISRWSSLACNIALDAVKTQVFEENGRKEIDIKKYARVEKIPGGIIE  
 DSCVLRGVMINKDVTHPRMRYIKNPRIVLLDSSLEYKKGESQTDIEITREEDFTRILQMEEEYIHQLCE  
 DI IQLPD VVITEKGISDLAQHYLMRANVTAIRRVRKTDNNRIARACGARIVSRPEELREDDVGTGAGLL  
 EIKKIGDEYFTFITDCKDPKACTILLRGASKEILSEVERNLDAMQVCRNVLLDPQLVPGGGASEMAVAH  
 ALTEKSKAMTGVEQWPYRAVAQALEVIPRTL IQNCGASTIRLL TSLRAKHTQESCETWGVNGETGLVDM  
 KELGIWEPLAVKLQTYKTAVETA VLLLLRIDDIVSGHKKKGDDQNRQTGAPDAGQE

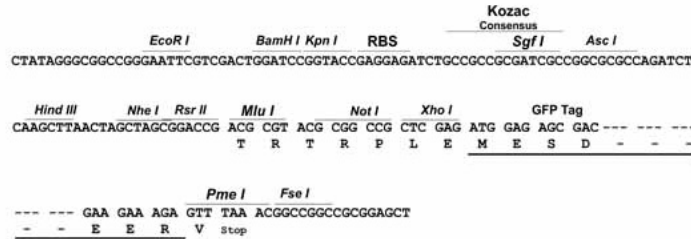
**TRTRPLE** - GFP Tag - V

**Restriction Sites:**

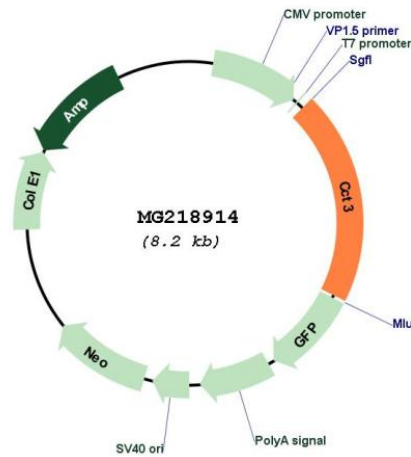
Sgfl-MluI

Cloning Scheme:

Cloning sites used for ORF Shutting:



Plasmid Map:



<b>ACCN:</b>	NM_009836
<b>ORF Size:</b>	1635 bp
<b>OTI Disclaimer:</b>	The molecular sequence of this clone aligns with the gene accession number as a point of reference only. However, individual transcript sequences of the same gene can differ through naturally occurring variations (e.g. polymorphisms), each with its own valid existence. This clone is substantially in agreement with the reference, but a complete review of all prevailing variants is recommended prior to use. <a href="#">More info</a>
<b>OTI Annotation:</b>	This clone was engineered to express the complete ORF with an expression tag. Expression varies depending on the nature of the gene.
<b>Components:</b>	The ORF clone is ion-exchange column purified and shipped in a 2D barcoded Matrix tube containing 10ug of transfection-ready, dried plasmid DNA (reconstitute with 100 ul of water).
<b>Reconstitution Method:</b>	<ol style="list-style-type: none"><li>1. Centrifuge at 5,000xg for 5min.</li><li>2. Carefully open the tube and add 100ul of sterile water to dissolve the DNA.</li><li>3. Close the tube and incubate for 10 minutes at room temperature.</li><li>4. Briefly vortex the tube and then do a quick spin (less than 5000xg) to concentrate the liquid at the bottom.</li><li>5. Store the suspended plasmid at -20°C. The DNA is stable for at least one year from date of shipping when stored at -20°C.</li></ol>
<b>RefSeq:</b>	<a href="#">NM_009836.1</a> , <a href="#">NP_033966.1</a>
<b>RefSeq Size:</b>	1957 bp
<b>RefSeq ORF:</b>	1638 bp
<b>Locus ID:</b>	12462
<b>UniProt ID:</b>	<a href="#">P80318</a>
<b>Cytogenetics:</b>	3 38.79 cM
<b>Gene Summary:</b>	Component of the chaperonin-containing T-complex (TRiC), a molecular chaperone complex that assists the folding of proteins upon ATP hydrolysis. The TRiC complex mediates the folding of WRAP53/TCAB1, thereby regulating telomere maintenance. As part of the TRiC complex may play a role in the assembly of BBSome, a complex involved in ciliogenesis regulating transports vesicles to the cilia. The TRiC complex plays a role in the folding of actin and tubulin.[UniProtKB/Swiss-Prot Function]