

Product datasheet for **MG218849**

Gspt1 (NM_001130008) Mouse Tagged ORF Clone

Product data:

Product Type:	Expression Plasmids
Product Name:	Gspt1 (NM_001130008) Mouse Tagged ORF Clone
Tag:	TurboGFP
Symbol:	Gspt1
Synonyms:	AI314175; AI326449; AV307676; C79774; G1st; Gst-1
Mammalian Cell Selection:	Neomycin
Vector:	pCMV6-AC-GFP (PS100010)
E. coli Selection:	Ampicillin (100 ug/mL)



[View online »](#)

ORF Nucleotide Sequence:

>MG218849 representing NM_001130008
 Red=Cloning site Blue=ORF Green=Tags(s)

TTTTGTAATACGACTCACTATAGGGCGGCCGGGAATTCGTCGACTGGATCCGGTACCGAGGAGATCTGCC
 GCC**CGCATCGCC**

ATGGATCCTAGCAGCGCGGTGGCGCGGTGGCGCGCGCGGGAGCAGCAGCAGCAGCGACTCTGCGC
 CCGACTGCTGGACCAGACGGATATGGAGGCCCGCGGCCGGGCTTGGCGCGCGCGGGAGCGGCAG
 CGGCTCCATGGCCGCGGTGGCCGAGGCCAGCGTGAGAACCTCAGCGCGCTTTCAGCCGCAACTCAAC
 GTCAACGCCAAGCCTTTCGTCGCCAACGTCCACGCGCTGAATTCGTGCCGTCCTTCTGCGGGGTCGG
 CCCAGCCGCCCTATCCCAGCTGGCGCAGCCGGAGGCGACCACGGAGCAGGCAGCGCGCGGGAGGCC
 TTCGGAACCTGTAGAGTCTCTCAAGACCAGTCGTGTGAAGGTTCAAATTTCTACTGTTAGCATGAACTT
 TCAGAACCTGTTGAAAATGGAGAGACAGAAATGTCCCAGAAGAATCATGGGAGCACAAGAAGAAATAA
 GTGAAGCGGAGCCAGGGGTGGTTCCTCAGGAGATGGAAGGCCACCAGAGGAAAGCACCCAAGAAATGAT
 GGAGGAGGAGAAAGAAATACCGAAACCTAAGTCAGCGGTGGCACCACCAGGTGCTCCAAGAAGGAACAT
 GTAATGTAGTGTTCATCGGACATGTTGATGCAGGCAAGTCAACCATTGGAGGACAAATAATGTATTTGA
 CTGGAATGGTCGACAAAAGGACACTTGAGAAGTATGAACGAGAAGCTAAAGAAAAAACAGAGAACTTG
 GTACTTGTCTTGGGCCTTAGACACGAATCAGGAAGAACGAGACAAGGGCAAAACCGTGGAGGTGGTTCGT
 GCCTATTTTGAACGGAAGAAGCATTTTACAATTCTAGATGCTCCTGGCCATAAGAGTTTTGTCCCAA
 ATATGATTGGTGGTGCCTCTCAAGCTGACTTGGCTGTACTGGTAACTCAGCCAGGAAAGGAGAGTTTGA
 AACTGGATTTGAAAAGGAGGACAGACAAGAGAACATGCAATGTTGGCAAAGACAGCAGGTGTCAAACAC
 TTAATTGTGCTTATTAATAAGATGGATGATCCAACGGTAACTGGAGCAACGAGAGATATGAAGAATGTA
 AAGAGAACTAGTACCATTTTGAAGAAAGTTGGCTTCAATCCAAAAAGGACATTCATTTATGCCGTG
 CTCAGGACTGACAGGAGCGAATCTTAAAGAACAATCAGATTTCTGTCTTGGTACATTGGCTTACCATT
 ATTCCATATCTGGATAATTTGCCAACTTCAATAGATCAGTTGATGGACCAATCAGGCTGCCAATTGTGCG
 ATAAGTACAAGGATATGGGGACTGTGGTCTGGGAAAGCTGGAATCTGGATCTATTTGTAAGGCCAGCA
 GCTTGTATGATGCCAAATAAGCACAACGTGGAAGTCTTGAATACTTTCTGATGATGTAGAAACGGAC
 TCTGTAGCTCCAGGTGAAAACCTCAAATCAGACTGAAAGGAATTGAAGAGGAAGAGATTCTCCAGGAT
 TCATCCTTTGTGATCTTAATAATCTTTGTCATTCTGGACGCACATTTGATGCTCAGATAGTATTATAGA
 GCACAAGTCCATCATCTGCCAGGGTATAATGCGGTGCTGCATATTCATACCTGTATCGAAGAAGTCGAA
 ATAACAGCCTTAATCTGCTTGGTAGACAAGAAATCAGGAGAGAAAAGTAAGACTCGACCCGTTTTGTAA
 AACAGATCAAGTATGCATTGCGCGTTTAAAGACAGCAGGAACCATCTGCCTGGAGACCTTAAAGGACTT
 CCCTCAGATGGGACGTTTTACCTTAAGAGATGAGGGTAAGACCATTGCAATTGGAAGTTCTGAAACTG
 GTTCCAGAGAAAGAC

ACGCGTACGCGGCCGCTCGAG – GFP Tag – GTTTAA

Protein Sequence:

>MG218849 representing NM_001130008
 Red=Cloning site Green=Tags(s)

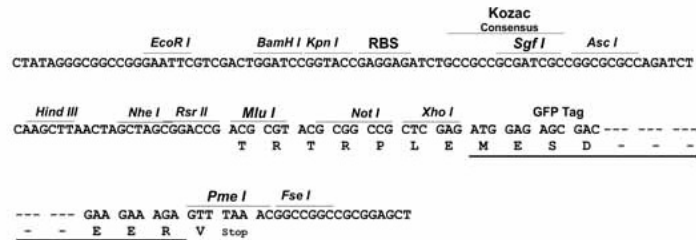
MDPSSGGGGGGSSSSSDSAPDCWDQTDMEAPGPGPCGGGSGSGSMAVAEAQRENLSAAF SRQLN
 VNAKPFVPNVHAAEFVPSFLRGPAPPLSPAGAAGGDHGAGSGAGGPSEPVESQDQSCGNSSTVSMEL
 SEPVENGETEMSPESWEHKEEISEAEPGGSSGDRPPEESTQEMMEEEEEIPKPKSAVAPPGAPKKEH
 VNVVFIGHVDAGKSTIGGQIMYLTGMVDKRTLEKYEREAKEKNRETWYLSWALDTNQEERDKGKTEVGR
 AYFETEKHFITILDAPGHKSFVPMIGGASQADLAVLVISARKGEFETGFEEKGGQTRHAMLAKTAGVKH
 LIVLINKMDDPTVNSNERYEECKELVPFLKKVGFNPKKDIHFMPCSGLTGANLKEQSDFCPWYIGLPI
 IPYLDNLPNFNRSVDGPIRLPIVDKYKDMGTVVLGKLESGSICKGQQLVMMPNKHNVVLGILSDDVETD
 SVAPGENLKIRLKGIEEEEILPGFILDNLNCHSGRTFDAQIVIIIEHKSIIICPGYNAVLHIHTCIEEVE
 ITALICLVDKKSGEKSKTRPRFVKDQVCIARLRTAGTICLETFFKDFPQMGRFTLRDEGKTAIGKVLKL
 VPEKD

TRTRPLE – GFP Tag – V

Restriction Sites: SgfI-MluI

Cloning Scheme:

Cloning sites used for ORF Shuttling:



ACCN: NM_001130008

ORF Size: 1905 bp

OTI Disclaimer: The molecular sequence of this clone aligns with the gene accession number as a point of reference only. However, individual transcript sequences of the same gene can differ through naturally occurring variations (e.g. polymorphisms), each with its own valid existence. This clone is substantially in agreement with the reference, but a complete review of all prevailing variants is recommended prior to use. [More info](#)

OTI Annotation: This clone was engineered to express the complete ORF with an expression tag. Expression varies depending on the nature of the gene.

Components: The ORF clone is ion-exchange column purified and shipped in a 2D barcoded Matrix tube containing 10ug of transfection-ready, dried plasmid DNA (reconstitute with 100 ul of water).

Reconstitution Method:

1. Centrifuge at 5,000xg for 5min.
2. Carefully open the tube and add 100ul of sterile water to dissolve the DNA.
3. Close the tube and incubate for 10 minutes at room temperature.
4. Briefly vortex the tube and then do a quick spin (less than 5000xg) to concentrate the liquid at the bottom.
5. Store the suspended plasmid at -20°C. The DNA is stable for at least one year from date of shipping when stored at -20°C.

RefSeq: [NM_001130008.1](#), [NP_001123480.1](#)

RefSeq Size: 6853 bp

RefSeq ORF: 1908 bp

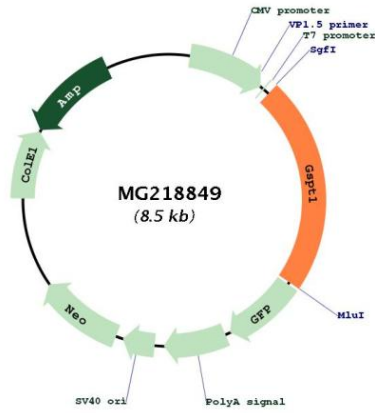
Locus ID: 14852

UniProt ID: [Q8R050](#)

Cytogenetics: 16 6.38 cM

Gene Summary: Involved in translation termination in response to the termination codons UAA, UAG and UGA (By similarity). Stimulates the activity of ETF1 (By similarity). Involved in regulation of mammalian cell growth (By similarity). Component of the transient SURF complex which recruits UPF1 to stalled ribosomes in the context of nonsense-mediated decay (NMD) of mRNAs containing premature stop codons (By similarity).[UniProtKB/Swiss-Prot Function]

Product images:



Circular map for MG218849