

Product datasheet for **MG218848**

Mtx2 (NM_016804) Mouse Tagged ORF Clone

Product data:

Product Type:	Expression Plasmids
Product Name:	Mtx2 (NM_016804) Mouse Tagged ORF Clone
Tag:	TurboGFP
Symbol:	Mtx2
Synonyms:	1500012G02Rik
Mammalian Cell Selection:	Neomycin
Vector:	pCMV6-AC-GFP (PS100010)
E. coli Selection:	Ampicillin (100 ug/mL)
ORF Nucleotide Sequence:	>MG218848 representing NM_016804 Red=Cloning site Blue=ORF Green=Tags(s)

TTTGTAAATACGACTCACTATAGGGCGGCCGGAATTCGTCGACTGGATCCGGTACCGAGGAGATCTGCC
 GCC**CGATCGCC**

ATGTCTCTGGTGGCGGAAGCGTTCGTCTCCAGATCGCAGCTACAGAACCTTGGCCTGAAAATGCGACCT
 TGTATCAGCAACTGAGAGGGGAGCAAATTTGCTTTCTGACAATGCAGCATCTCTTGCTGTGCAGGCATT
 TTTGCAGATGTGAATCTGCCTGTCAAAGTGGTGTAGGGCAAATGCGGAATATATGTCTCCATCTGGA
 AAAGTTCCTTTTATTCATGTGGGAAATCAAGTAGTGTGAGAACTTGGCCCAATAGTCCAATTTGTTAAAG
 CCAAGGGCCATTCTCTTAGTGATGGGTTGGATGAAGTCCAAAAAGCAGAAATGAAAGCCTACATGGAATT
 AGTCAACAATATGCTGCTGACTGCAGAGCTGTATCTCCAGTGGTGTGATGAAGCTACAGTAGGGGAGATC
 ACTATTGCTAGGTATGGATCTCCTTACCCTTGGCCTCTGAACCACATTTTGGCCTATCAGAAGCAGTGGG
 AAGTGAAACGTAAGATGAAAGCTATTGGATGGGGTAACAAGACTCTGGACCAGGTCTTAGAAGATGTAGA
 CCAGTGCTGTCAAGCCCTTTCCAGAGACTGGGAACACAACCATACTTCTTCAATAAGCAACCTACTGAA
 CTTGACGCTCTGGTTTTTGGCCATTTGTATACCATTCTTACCACACAATTGACCAGCGATGAACCTTCTG
 AGAAGGTGAAAACTATAGCAACCTCCTGGCTTCTGTAGAAGAATTGAACAGCACTACTTTGAAGACTG
 GGTAAGGCAGGTTGTCT

ACGCGTACGCGGCCGCTCGAG - GFP Tag - GTTTAA


[View online »](#)

Protein Sequence: >MG218848 representing NM_016804
 Red=Cloning site Green=Tags(s)

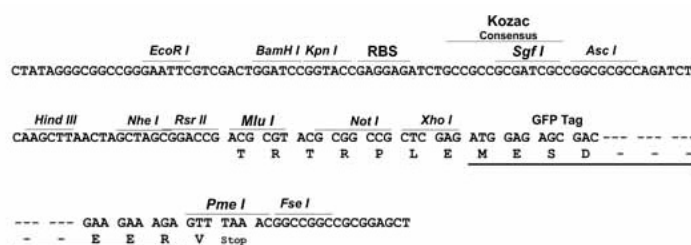
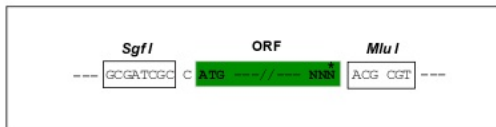
MSLVAEAFVSQIAATEPWPENATLYQQLRGEQILLSDNAASLAVQAFLQMCNLPVKVVCRAAEYMSPSG
 KVPFIHVGNGVVSELGPIVQFVKAKGHSLSGGLDEVQKAEMKAYMELVNNMLLTAEYLQWCDEATVGEI
 TIARYGSPYPWPLNHILAYQKQWEVKRKMKAIGWGNKTLQVLEDDVDQCCQALSQRLGTQPYFFNKQPT
 LDALVFGHLYTILTTQLTSELSKVKNYSNLLAFCRRIEQHYFEDWGKGRSL

TRTRPLE – GFP Tag – V

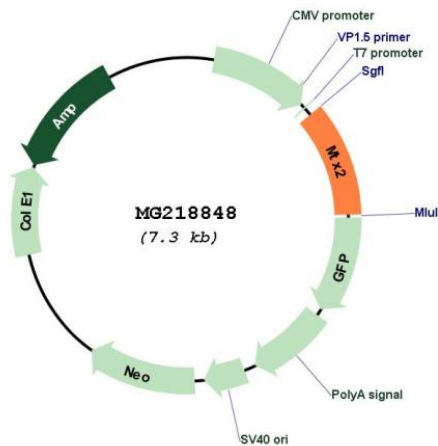
Restriction Sites: Sgfl-MluI

Cloning Scheme:

Cloning sites used for ORF Shuttling:



Plasmid Map:



ACCN: NM_016804

ORF Size: 789 bp

OTI Disclaimer:	The molecular sequence of this clone aligns with the gene accession number as a point of reference only. However, individual transcript sequences of the same gene can differ through naturally occurring variations (e.g. polymorphisms), each with its own valid existence. This clone is substantially in agreement with the reference, but a complete review of all prevailing variants is recommended prior to use. More info
OTI Annotation:	This clone was engineered to express the complete ORF with an expression tag. Expression varies depending on the nature of the gene.
Components:	The ORF clone is ion-exchange column purified and shipped in a 2D barcoded Matrix tube containing 10ug of transfection-ready, dried plasmid DNA (reconstitute with 100 ul of water).
Reconstitution Method:	<ol style="list-style-type: none"> 1. Centrifuge at 5,000xg for 5min. 2. Carefully open the tube and add 100ul of sterile water to dissolve the DNA. 3. Close the tube and incubate for 10 minutes at room temperature. 4. Briefly vortex the tube and then do a quick spin (less than 5000xg) to concentrate the liquid at the bottom. 5. Store the suspended plasmid at -20°C. The DNA is stable for at least one year from date of shipping when stored at -20°C.
RefSeq:	NM_016804.4 , NP_058084.3
RefSeq Size:	1258 bp
RefSeq ORF:	792 bp
Locus ID:	53375
UniProt ID:	O88441
Cytogenetics:	2 C3
Gene Summary:	Involved in transport of proteins into the mitochondrion.[UniProtKB/Swiss-Prot Function]