

Product datasheet for **MG218840**

Nrk (NM_013724) Mouse Tagged ORF Clone

Product data:

Product Type:	Expression Plasmids
Product Name:	Nrk (NM_013724) Mouse Tagged ORF Clone
Tag:	TurboGFP
Symbol:	Nrk
Synonyms:	AA407323; AA409510; AI225895; AV168563; AW538185; Nesk
Mammalian Cell Selection:	Neomycin
Vector:	pCMV6-AC-GFP (PS100010)
E. coli Selection:	Ampicillin (100 ug/mL)
ORF Nucleotide Sequence:	>MG218840 representing NM_013724 Red=Cloning site Blue=ORF Green=Tags(s)

TTTTGTAATACGACTCACTATAGGGCGGCCGGAATTCGTCGACTGGATCCGGTACCGAGGAGATCTGCC
GCC**CGATCGCC**

ATGGCAGGACCTGGGAGTTGGAGGGACAAGGAGGTGACAGATCTTGCCAGTTGCCGGATCCAACCTGGAA
TATTCTCACTAGATAAAGCCATTGGTCTTGGTACTTATGGAAGAATCTTTTGGGAATCCATGAAAAGAC
TGGTTCATTGGTGGCTGTTAAAGTAATGAGTGCCAGGAAGACTCCTTTCCTGAGATAGGAAGACGGGTG
AGAGTGAATAAAACAAAAGTCTGTTGGATGGAGATACAGCGATGAAGAAGAGGATCTTAGGACGGAAC
TCAACCTGCTGAGGAAGTACTCTTCCACAAAAACATTGTGACCTCTATGGAGCATTTTCAAGCTGAA
TCCTCCTGGCCATCAGCACCAACTTTGGATGGTAAATGGAGCTATGTGCAGCAGGCTCAGTCACTGATGTA
GTGAGGATGACAAGAAATCAGAGTTTAAAAGAAGACTGGATCGCTTATATCTGTGCGAGAAATCCTTCAGG
GCTTAGCTCACCTTCATGCACACCAAGTAATTCACCGGGACATCAAAGGACAAAAATGTGCTGCTGACTCA
TGATGCTGAAGTCAAAATAGTGGATTTTGGAGTGAGTGCCCAAGTGAGCAGAACAATGGACGGAGAAAT
AGCTTCATTGGTACACCGTACTGGATGGCCCCAGAGGTGATTGATTGTGATGAGGACCAAGGTGTTCTCT
ATGATTACAGAAGTATGTGTGGTCTGTGGGAATCACTGCTATTGAAATGGCTGAAGGGGCTCCTCCTCT
GTGTAAGCTTCAGCCTCTGGAAGCCCTTGTGTTATTCTACGGGAAGCCGCTCCCAAAGTCAAATCCAGT
GGATGGTCCCGTAAGTTCAGAAATTTTCATGGAATAATGCATGATAAAAAATTTCCATTTTCTGCTTACAT
CTGGAACATGCTTCTTACCCATTTGTCCATGATATAAAAAATGAACGACGTGTTGTGGAGTCTTGAC
AAAACATCTTACTGGGATCATTCAAAGAGAGAGAAAAAGGAATACCTGTGGCCTTTGAAGGAGAAGAA
GCTGCTAAGGAACAGTACATCACAAGGAGATTCAGAGGGCCTTCTTGCACTCCTGAGCTTCTCAGAGTGC
CAACCAGCAGCAGATGCAGACCACTCAGAGTCTGCATGGAGAGCCCCCTCAGCCAAGGTGGCTACCTGA
TCAAGAAGACCCACAGGACCAAGAACTTCAACAACCTGCAGAAGGCAGCCGGAGTGTTCATGCCTCTACAT
TCTCAGGACAATACATCCAAGCTTTTCCAAAGCAGGTTGAGGTAGCACCTATCTCCGTGGGGCAGCTC
AGGTGGTCATGCCAGTACTGGTACAGTTGAAGCACCCGCCCAAGTAAGCAAAGCAGCCAGATGCTCAA
GTCACCTCCCCTCAGGACAACAAGCTACTTCTCCAGAGGTCCAGGCCCCCGTAGCCGAAGGACAGCAG



[View online »](#)

GCCCAGCATGAGGCCTTAGAGACAGAACAGCCTAAAGATTTGGACCAGGTGCCAGAAGAATTTTCAGGGG
AAGACAGGGCACCTGAACAGCCAAGGCAGGGCCAGGCTGCTGAGCAGCAGCAGATACATAATCCGGTTCC
TGAGCAGCCGCGGAGGAGGATAGGGAGCCTGAGCAAGCTGAGGTGCAGGAAGAGGCTGTGGAGCCTCCC
CAAGCTGAGATCGAGGACAAGGAACCTGAGGTAGTGAAGTGCACGCCAGGTGCTCCTGCCTTTACTGT
CCCAGAACCGTCACGTGCTCTTGCTCTTCAATTTGGATAGACAGCTGCTCATTCCGGTAGGGGAACAAA
TGAAGAGGTACCACGAGCCAGGCTGGGATCTAGAGCCCAATGCATTTGTACAAAACCACTTGGTCCGCTGC
ATCGAGGGACTATCCAGGGACTTGCCTCGAGCACCAATGCATTTGTACAAAACCACTTGGTCCGCTGC
AGATCTTCTTGAAAATTTGTCTACAGACGGGTTTTACTGAGCCGGAACCGACACAGAAGAAAAAGTC
GAAAGTTGCTAGTCTAAGGAAAGCAATAGCAAAACGACTAAGACCCAAGAGGTTCCAGAGCAAGGCATTA
TGGCGACTTGAAGATTTTGAATCTCAGATGTAGAAAACAGCAGGAGACGGCGCCACCGTAGATGGGAGG
ACATCTTAAATCAGCATGAAGAGCAACTGAGACGAGTTGAAAAAGACAGAGAAGATGACTCATCAGACAA
TGATGAAGTGTTCATTCAATTCAGGCTGAAGTCCAAATAGAACCACACGCTGCAATCCTGCAGGAAAT
GAGGTCCATGAGAGATCTGCTCCATGCCTTGAACCCGGAATCGCACACATCGTGTGAAATTTTCTCCAA
GTGTTGGTGAGGAAGAGCCTTCTTGGAGAAGCCAGCCGAGCAGCAGCAGCAGCAGCCATGAACAT
CCGACCGAGGAATTGCCTAAATCCTCAGAAATTTCAAGCTCAATCAGACTCATCTTCTGAGGAGCAGT
CCTGTGACTAGGAGGAAGTCCCAGTCAACCCGCTTATCTACTATTGATCAGAAGCTACTGATTGATA
TCCACGTTCCAGATGGATTTAAAGTGGGAAAAATACACCTCCTGTGACTTGACAAATGAATGGGTAGG
CTATAATGCACTCTGAAATCTTCTGGGATGACTGGATAATGCCTACACGTCCCCTCGGCCACCTGAA
GAAGATGGTGATTATGTTGAACTCTATGATGCTGATGCCAATGCTAATGGTGATGAAGAAGTTGCAAACG
GTGCTTATGAAGATCCTCGTGATGGTGCCAATGGCCATGATGACATGAATAACCAGCTTGATCAAGCAAA
TGGTTATGAAGCCATGGTGCTGCTGGCTACAATGGTGGAGACGTTGGTGGTAATCATGGTGCTGCTTTC
AATGGGCCAAGAGCAAAATATCCAGAGCGGGAATCTTAAAAACGGTCAATATGATGGAGCTGCTCTAA
ACAGGGGAGCTTTTGGAGTCTTTGGAGACAATGCAGCCAGAGCTTCCATGGAGCTGCCGGTGAAGCAGG
TGCAGCCTTTGGAACCATGGAGCCAATAGGGCAATGGAAGAGGTAACAGAAAACAGGGAGGCCAATGGA
AGGAATGAAGAGAATGGAGCATTGGACGGGATCAACATGTATTTCCAGAGTTTGAACATGAGGAATCAG
ATCGTGAACTGAGACCTCAGATTCAATTCCTTGGAGATCACATCCTTTGATGGTGAGCAAAACAGTGG
TAGACCAGTATCATCAACAACAATGGGTTTTCTATTGGACGCTCATCTCCTAGAGGTTCTGATTTTGGG
AGTGACATCTCATATAACAGCCCAATACTACATGTGTATGAAAAGGATTTCTCATCTGAGGTCTACTGTG
GTTCTTTGTGGGAGTCAATTTGTTGCTGGGCACCCAATCTCATCTGTATCTGATGGACCGAAGTGGAAA
GGCAGAAATTGTTAAACTTATAAAGCGAAGACCATTCCGGCAGATTCAAGTCGTGGAGCAGCTCAATTTG
CTGATTACCATCTCTGGCAAAAAGAACAGACTTCGCGTGTATCATCTGTCTTGGCTGAGGAACAAAATTC
TGAATAATGATCCAAAGAGTAAGAAAAGGCAGAAAGGCGATGAGGAAGAAAAGAGGAAGCTTGCAAAGCTAT
CGATAAGTTGATTGGCTGTGAACACTTCAGTGTCTTCAACATGAAGAAAACAACATACATTGCGGTTGCT
GTGAAGTCATCAATTCACCTCTTTGCATGGGCACCAAAAATCCTTTGATGAAAACACTGCCATTAAGTGT
TTCCAACCTCGTGATCTTAAGCCACTGACAGTTGACCTGGCTGTTGGTTCCAGAGAAAACACTGAAGATTTT
CTTCAGCTCAGCTAATGGATATCATATCATCGATGCAGAACTGAAGTTATGTCTGAGGTGACCTTGCCA
AATAATAATGTCGTCATTTTACCTGATTGCTTGGGACTTGGTGTGATGCTCTCCCTCAATGCTGAAGCTG
CCTCCGAGGAAGCAAACGAACAACCTCTTAAGAAGATCCTGGACGTGTGGAAGGACATACCGTCTTCTGT
GGCTTTTGTGAGTGTACAAAGAGAATCACTGGATGGGACCAAAAAGGCTATTGAAGTGCCTCTTTCAGTCA
ACTATTCTCGAGAATGAGCTGAAGCGCCGCTCAATCAAGAACTGAGATTTCTCTGTGCCGTGGTGACA
AGATGTTCTTTGCTTCTACACTGAGCAATGACCACAGCCGGGTTACCTTATGAGCCTTGAAAAACTTGA
AGAGCTCCATAGAAGCTATGCTGTT

ACGCGTACGCGGCCGCTCGAG – GFP Tag – GTTTAA

Protein Sequence: >MG218840 representing NM_013724
 Red=Cloning site Green=Tags(s)

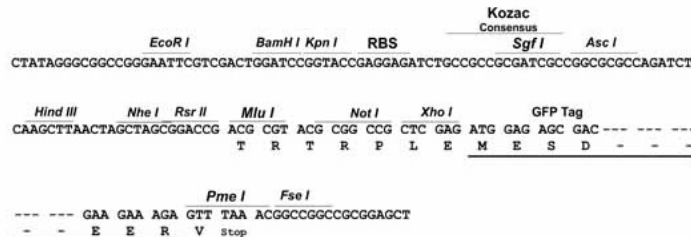
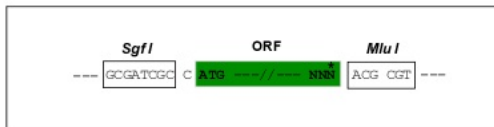
MAGPGSWRDKEVTDLQQLPDPTGIFSLDKAIGLTYGRIFLGIHEKTGSLVAVKVMARKTPLPEIGRRV
 RVNKYQKSVGWRYSDDEEDLRTELNLLRKYSFHKNIVTFYGAFFKLNPPGHQHLWMMELCAAGSVTDV
 VRMTRNQSLKEDIAYICREILQGLAHLHAHQVIHRDIKGNVLLTHDAEVKIVDFGVSAQVSRNNGRRN
 SFIGTPYWMPEVIHCEDEPRCSYDYSRVVSVGITAIEMAEGAPPLCKLQPLEALCVILREAAPKVKSS
 GWSRKFQNFMENCKMFLFRPTSGNMLLHPFVHDIKNERRVVESSLTKHLTGIIQKREKKGIPVAFEGEE
 AAKEQYITRRFRGSPCTPELLRVPTSSRCRPLRVLHGEPQPRWLPDQEDPQDQELQQLKAAGVFMPLH
 SQDNTSKLFPKQVEVAPYLRGAAQVMPVLVQVEAPPQVSKAAQMLKSLPTQDNKATSPEVQAPVAEGQQ
 AQHEALETEQPKDLQVPEEFQGDRAPEQPRQQAEEQQIHNPVPEQPPEEDREPEQAEVQEEAVEPP
 QAEIEDKEPEVVQVHAQVLLPLLSONRHVLLPLHLDRQLLIPVGEQNEEVPRQAQWDLASRAVGAVQAL
 IEGLSRDLLRAPNAFVTKPLGPLQIFLENLSTDGFYTEPEPTQKKKSKVASLRKAIKRLRPKFRKAKAL
 WRLEDFFSDVETSRRRRHRRWEDIFNQHEEQLRRVENDREDDSSDNDEVFHSIQAEVQIEPHAANPAGN
 EVHERSAPMPCNRNRTRHRVKFSPSVGEEEPSLEEAQPQQQQPMNIRPRNCLNPQNFQAQSDSSSEEDS
 PVTRRKSQSSPPYSTIDQKLLIDIHVPDGFVKGKISPPVYLTNEWVGYNALSEIFWDDWIMPTRPAPPE
 EDGDYVELYDADANANGDEEVANGAYEDPRDGANHGDDMNQLDQANGYEGHGAAGYNGGDVGGNHGAFF
 NGPRANYPRAGILKNGHNDGRALNRGAFGVFGDNAARAFHGAAGEAGAAFGNHGANRGNRGNRNRREANG
 RNEENGAFGRDQHVPEFEHEESDRGTETSDSIALEITSFDGEQNSGRPVSSTTMGFPIGRSSPRGSDFG
 SDISYNSPILHVYEKDFSSSEVYCGSLWGVNLLGTQSHLYLMDRSGKAEIVKLIKRRPFRQIQVVEQLNL
 LITISGKKNRLRVYHLSWLRNKILNNDPKSKKRQKAMRKKEEACKAIDKLGCEHFSVLQHEETTYIAVA
 VKSSIHLEFAWAPKSFDENTAIKVFPTRDLPKPLTVDLAVGSEKTLKIFFSSANGYHIDAIESEVMSEVTL
 NNNVVILPDCLGLGVMLSLNAEAASEEANEQLLKKILDVWKDIPSSVAFECTKRITGWDDQKAEIVRSLQS
 TLENELKRRRSIKKLRFLCARGDKMFFASTLSNDHSRVYLSLGLKLEELHRSYAV

TRTRPLE - GFP Tag - V

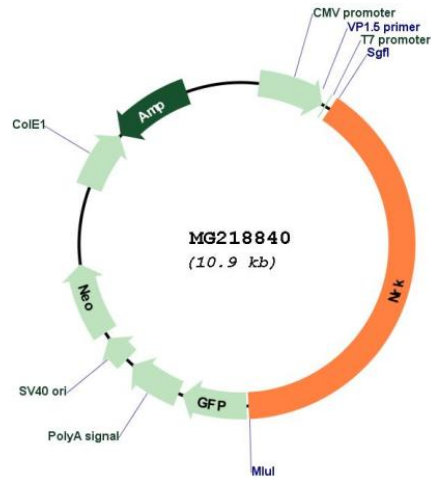
Restriction Sites: SgfI-MluI

Cloning Scheme:

Cloning sites used for ORF Shuttling:



Plasmid Map:



ACCN: NM_013724

ORF Size: 4365 bp

OTI Disclaimer: The molecular sequence of this clone aligns with the gene accession number as a point of reference only. However, individual transcript sequences of the same gene can differ through naturally occurring variations (e.g. polymorphisms), each with its own valid existence. This clone is substantially in agreement with the reference, but a complete review of all prevailing variants is recommended prior to use. [More info](#)

OTI Annotation: This clone was engineered to express the complete ORF with an expression tag. Expression varies depending on the nature of the gene.

Components: The ORF clone is ion-exchange column purified and shipped in a 2D barcoded Matrix tube containing 10ug of transfection-ready, dried plasmid DNA (reconstitute with 100 ul of water).

Reconstitution Method:

1. Centrifuge at 5,000xg for 5min.
2. Carefully open the tube and add 100ul of sterile water to dissolve the DNA.
3. Close the tube and incubate for 10 minutes at room temperature.
4. Briefly vortex the tube and then do a quick spin (less than 5000xg) to concentrate the liquid at the bottom.
5. Store the suspended plasmid at -20°C. The DNA is stable for at least one year from date of shipping when stored at -20°C.

RefSeq: [NM_013724.2](#), [NP_038752.2](#)

RefSeq Size: 6604 bp

RefSeq ORF: 4368 bp

Locus ID: 27206

UniProt ID: [Q9R0G8](#)

Cytogenetics: X 61.15 cM

Gene Summary: May phosphorylate cofilin-1 and induce actin polymerization through this process, during the late stages of embryogenesis. Involved in the TNF-alpha-induced signaling pathway.
[UniProtKB/Swiss-Prot Function]