

## Product datasheet for **MG218839**

### **Dcp1b (NM\_001033379) Mouse Tagged ORF Clone**

#### **Product data:**

Product Type:	Expression Plasmids
Product Name:	Dcp1b (NM_001033379) Mouse Tagged ORF Clone
Tag:	TurboGFP
Symbol:	Dcp1b
Synonyms:	B930050E02Rik
Mammalian Cell Selection:	Neomycin
Vector:	pCMV6-AC-GFP (PS100010)
E. coli Selection:	Ampicillin (100 ug/mL)



[View online »](#)

**ORF Nucleotide Sequence:**

>MG218839 representing NM\_001033379  
 Red=Cloning site Blue=ORF Green=Tags(s)

TTTTGTAATACGACTCACTATAGGGCGGCCGGGAATTCGTCGACTGGATCCGGTACCGAGGAGATCTGCC  
 GCC**CGGATCGCC**

ATGGCGGCCGCGCGGCAGGTGGCTGCCTGCGGAAGGACACGATATCAGCCTGGCAGCCCTGCGGCGCC  
 ACGACCCCTACATCAGTCGCATCGTGGAGTGGCCAGCCAGGTGGCTCTGTACACTTTCGGCCATCGGGC  
 CAACGAGTGGGAGAAGACTGGAGTGGAGGGAACCTTGTTGTTTATACGAGGTCTGCCTCCCCAAAGCAC  
 GGATTCACCATTATGAATAGGCTCAGCATGGAAAAAGAAACAGAACCCATTACTAAAGACCTGGACTTCC  
 AGCTCCAGAACCCTTTCCTTCTACAGAAACGGCACACTGTCCATTTATGGAATTTGGTTTTATGATAA  
 GGAAGAGTGCCAGAGAATTGCAAACTAATGAAAACTCACTCAGAGCGAACAGTTGAAAGCTGTCAT  
 GGAGCCGATCCTCCCCGTGACCTTGAGCTCAGGAGAGGGCCAAGAAGTAGATATCCTGCAGATGCTCA  
 CCAAGGCCAAGGATGAGTACACCAAGTGAAGACTGTTCCGAGCCAAAACAGATGACCAATTCCTCTGC  
 CATCTGTGACAACCCTAACTTATCAAACCTGTCCCCGTGAGACCCAGCAGCAGCCAGAGGCTGCAAGGA  
 CCTGCGCCAGCAAGACCTCGGACCCCTGAGCCTCAGCACTTATCTTTAACAGCACTATTTGGGAAACAAG  
 ACAAGACTCCCTGTGAGAACTGTAAAGCCCTCCCGACCTTTGCCACCACCACCACCATCACACCA  
 GCAGCAGCAAGAGACGCGTCCAGTTCATCACGGGGTCGCATGCTCCCTGTCTGTGAGGAGCCAGGAAG  
 CTCTCACTCCCGTGGAGAAGCAGCTCTGCCCGGCCATTAGAACTCATGCTCGGGAGCCCGGGCTGC  
 ACCCCCTGCCTCAGCACCTGAACAGTGGTCTGCAAAAGTGGCAGCCCAAGTCTGCGGGGGAATTCT  
 CCCTGGTCTGTCCAGCTGGGGTCCCCGGAATGGCAGGGTGCACACTGCACACAGAGCACTTGACAG  
 GGCCACAAGCTATTAGAGCAGCTTCAAGGTGCCCTGGGGCAGTGCATAAGTATAACCCCTGTGCGCCTA  
 CCGGTCCAGCTGTGGCCACTCAGGTGGTCCGGCCAGAGTGTGGCCCAATCAGACTGGTGTATTTGAG  
 TGGCCCCCTTCAACCTCCCGCCAGGACACCAAGCTCTCAGGAAGGAGCAGGGTGCAGTGCCTGCACAA  
 GCGGTGTCCCTCTCTGGCAGCCAGGAGAGCAGCCACCCTGCTCCCTACGCAGGAGCTGCTAAGGAAGC  
 TCCAGGTAGTACACCAGGAGCAGCAGGGCCCGCCAGCCTTGGCAGCCAGGTTCCCTGTGTGAGC  
 CCAGGGATCAGGGACAGAAAAGCCCTTGGAAAGCTGGGTGAGCAAGACAGCCAGCATGGAGAAGCAGGCT  
 CCTCTTCTGCAGTCTACCTGTGCCCACTGAGGGAGACTGATAATGGGCTCATGGCCCTAGGAGGCCAAG  
 AACTTCTGCTGCCTCCTCCAGCCTCCTGCCCCTGCAGAACTGGGAGTCTCCACCCTGGCCAGCAG  
 GCCCTCACAGGCTGCAGCTCCAGGAGCACTGCTGAACCTCATCCAGAATGATGACAACCTTCTAAGC  
 ATAATCTATGAAGCCTATCTCTCAGCGTGACACAAGCAGCCATGAGAACCACG

AG**CGGACCG**ACGCGTACGCGGCCGCTCGAG - GFP Tag - GTTTAA

**Protein Sequence:**

>MG218839 representing NM\_001033379  
 Red=Cloning site Green=Tags(s)

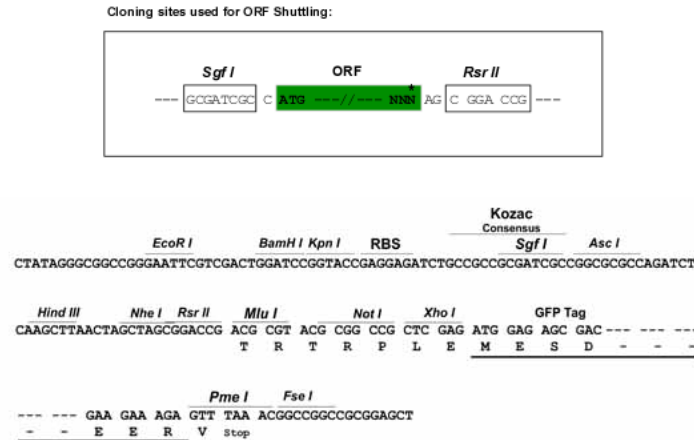
MAAAAAGGLPGKGHDISLAALRRHPYISRIVDVASQVALYTFGHRANEWEKTGVEGTLFVYTRSAPKH  
 GFTIMNRLSMENRTEPITKDLDFLQNPFLLYRNGTLSIYGIWFYDKEECQRIAKLMKNLTQSEQLKACH  
 GAGSSPVLSSGEGQEVDILQMLTKAKDEYTKCKTCSEPKQMTNSSAICDNPKLKIPVPRPSSSQRLLQG  
 PAPSKTSDPEPQHLSLTALFGKQDKAPCQETVKPSRTFAHHHHHHHQQQQETRPVHHGVACSLSCEEPRK  
 LSLPVEKQLCPAIQKMLGSPGLHPLPQHPEQWSCKSGSPSPAGGILPGPVQLGSPWNGRVAHCTQSTCR  
 GHKLLEQLQGAPGAVHKYNPCAPTGPVAVATQVAPGQSVASQSLVYFSGPLQPPAPGHQALRKEQGALPAQ  
 AVSLSGSQESSPTVLPTELLRKLQVHQQEAAPRPAARFPVSAQGSGETKPLEAWVSKTASMEKQA  
 PLLQSTCAPLRETDNGLMALGGQELPAASSLLPLQNWESSTVASRPLTRLQLQEALLNLIQNDDNFLS  
 IIEAYLFSVTQAAMRTT

SGP**TRTRRLE** - GFP Tag - V

**Restriction Sites:**

Sgfl-RsrII

Cloning Scheme:



ACCN: NM\_001033379

ORF Size: 1734 bp

OTI Disclaimer: The molecular sequence of this clone aligns with the gene accession number as a point of reference only. However, individual transcript sequences of the same gene can differ through naturally occurring variations (e.g. polymorphisms), each with its own valid existence. This clone is substantially in agreement with the reference, but a complete review of all prevailing variants is recommended prior to use. [More info](#)

OTI Annotation: This clone was engineered to express the complete ORF with an expression tag. Expression varies depending on the nature of the gene.

Components: The ORF clone is ion-exchange column purified and shipped in a 2D barcoded Matrix tube containing 10ug of transfection-ready, dried plasmid DNA (reconstitute with 100 ul of water).

Reconstitution Method:

1. Centrifuge at 5,000xg for 5min.
2. Carefully open the tube and add 100ul of sterile water to dissolve the DNA.
3. Close the tube and incubate for 10 minutes at room temperature.
4. Briefly vortex the tube and then do a quick spin (less than 5000xg) to concentrate the liquid at the bottom.
5. Store the suspended plasmid at -20°C. The DNA is stable for at least one year from date of shipping when stored at -20°C.

RefSeq: [NM\\_001033379.3](#), [NP\\_001028551.2](#)

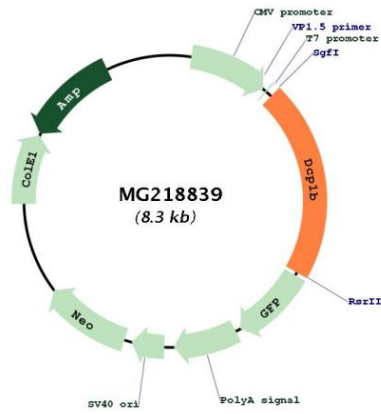
RefSeq Size: 3311 bp

RefSeq ORF: 1737 bp

Locus ID: 319618

Cytogenetics: 6 F1

Product images:



Circular map for MG218839