

Product datasheet for **MG218826**

Gsdme (NM_018769) Mouse Tagged ORF Clone

Product data:

Product Type:	Expression Plasmids
Product Name:	Gsdme (NM_018769) Mouse Tagged ORF Clone
Tag:	TurboGFP
Symbol:	Gsdme
Synonyms:	2310037D07Rik; 4932441K13Rik; Dfna5h; EG14210; Fin15
Mammalian Cell Selection:	Neomycin
Vector:	pCMV6-AC-GFP (PS100010)
E. coli Selection:	Ampicillin (100 ug/mL)



[View online »](#)

ORF Nucleotide Sequence:

>MG218826 representing NM_018769
 Red=Cloning site Blue=ORF Green=Tags(s)

TTTTGTAATACGACTCACTATAGGGCGGCCGGAATTCGTCGACTGGATCCGGTACCGAGGAGATCTGCC
 GCC**GCGATCGCC**

ATGTTTGCCAAAGCAACTCGAAATTTTCTAAAGAAGTTGATGCTGGAGGAGACCTGATTCAGTCTCAC
 ACTTGAACGACTCTGACAAGCTGCAACTTCTAAGTCTGGTGACCAAAAAGAAGAGATACTGGTGCTGGCA
 GAGACCCAAGTACCAGATTTTATCTGCCACCCTGGAAGATGTA CTACAGAAGGGCACTGTCTCAGTCCA
 GTGGTTGTGGAGTCACTTCTGAAATACGAGAGCAAGTGTGAGAACCATAAGAGCGGGGCTATTGGGA
 CAGTCTGGGGAAAGTCAAGCTGAACGTTGGTGGCAAAGCGTGGTGGAGAGTCACTCTTCGTTTGGAAC
 CCTGAGGAAGCAGGAGGTGGACGTGCAGCAGCTCATCCAGGATGCCGTCAAGAGAACAGTTAATATGGAC
 AACCTGGTACTTCAGCAGGTGCTAGAGAGCAGGAACGAGGTCCTGTGTGTCTGACGCAGAAGATCATGA
 CCACGCAGAAGTGCCTGATTTCTGAGCATGTGCAGTCCGAGGAGACGTGTGGAGGCATGGTGGGGATCCA
 GACCAAGACTATACAGGTGTCAGCAACGGAGGATGGGACTGTACCACAGACACCAATGTAGTGCTGGAG
 ATCCCTGCTGCCACCACATTGCCTATGGCATCATGGAGCTGTTGTGAAACAAGATGGCCAGTTTGAAT
 TCTGCCTCCTCCAAGGAAACATGGTGGCTTCGAGCATGAGAGGAACTAGACTCTGTCTACTTGGACCC
 CCTGGCCTACAGAGAGTTCGCCTTTCTGGACATGCCGGATGGGGGTCAAGGGATCTCTTCGAGGACGGG
 CCCCTACGAGTTGTAACAAGCAACCCCTGCACCTAGAGAGGAGTTTCCACCCCTTTGCGGTGTTACCTG
 CCCAGCAGCAGAGGGCGCTGTTCTGTGTCTGCAGAAAATCCTGTTTGTGAAGAACTCCTTCGGGCCCT
 GGAGCAAGTGTGTGATGATGTGGCTGGTGGCCTCTGGTCTCACAGGCTGATTGGCAATGGAGGAGCTG
 ACCGACGTCAAGCAGGACCTCACAGCCTTCTGCAGCTGGTGGGATACAGGATACAAGGAGAGCATC
 CTGGCCCCACAGGATGAGGTCAAGCAACAGGACTCTTTGCAACAGCCTACTTCTGGTCAGCCGACTAGC
 AGAAATGCCTGATAATGCCACAGTTTTCTGGGACTTGCTGCAAACTCCATGTTATTTCTTCGCTGTGC
 TGCTTGCTCCATGCTCTGTCTGATGACAGCGTGTGTGATTTTCAACCCACCTTGCTCCTCTGAGAG
 ACACAGAGAGTTTGGCATTGTGCAGCGATTGTTGCCTCTGCTGACATTGCCCTGGAGAGGATGCAGTT
 TTCTGCGAAAGCCACCATCCTGAAGGACTCTTGACATCTCCCGCTAATTCTCACATCACTCTAAGTGGG
 CTCAGCACTCTAAGCAAGAGCATGAGGAAGAGCTTTGTCAGTCAGGACATGCTACAGGTCAAGAC

ACGCGTACGCGGCCGCTCGAG - GFP Tag - GTTTAA

Protein Sequence:

>MG218826 representing NM_018769
 Red=Cloning site Green=Tags(s)

MFAKATRNFLKEVDAGGDLISVSHLNDSKQLQLLSLVTKKKRYWCWQRPKYQILSATLEDVLTGHC LSP
 VVVESDFVKYESKCNHKS GAIGTVVGKVKLN VGGKGVVESHSSFGTLRQEV DVVQQLIQDAVKRTVNMD
 NLVLQQVLESRNEVLCVLTQKIMTTQKCVISEHVQSEETCGGMVGIQTKTIQVSATEDGTVTTDTNVVLE
 IPAATTIAYGIMELFVKQDGFCLLQGKHGGFEHERKLD SVYLDPLAYREFAF LDMPPDGGQGISSQDG
 PLRVVKQATLHLERSFHPFVLP AQQRALFCVLQKILFDEELLRALEQVCDDVAGGLWSSQAVLAMEEL
 TDSQQQDLTAFLQLVGYRIQGEHPGPQDEVS NQKLFATAYFLVSALAEMP DNATVFLGTCC LKHV ISSL C
 CLLHALSDDSVCDFHNPTLAPLRDTERF GIVQRLFASADIALERMQFS AKATILKDCSIFPLILHITLSG
 LSTLSKEHEEELCQSGHATGQD

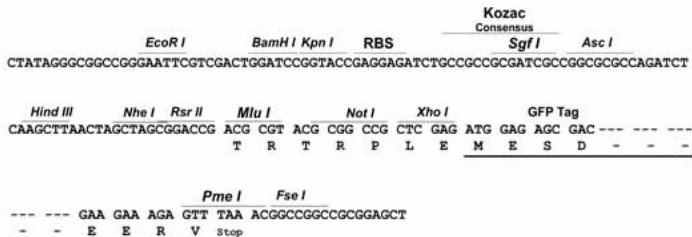
TRTRPLE - GFP Tag - V

Restriction Sites:

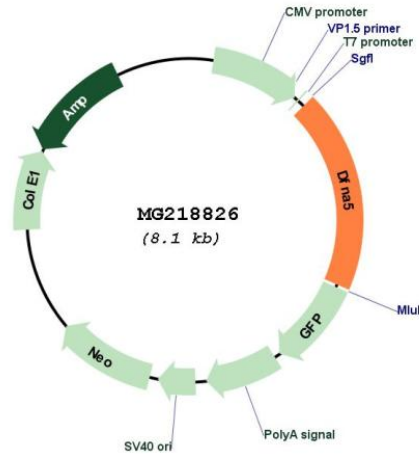
Sgfl-MluI

Cloning Scheme:

Cloning sites used for ORF Shutting:



Plasmid Map:



ACCN: NM_018769

ORF Size: 1536 bp

OTI Disclaimer: The molecular sequence of this clone aligns with the gene accession number as a point of reference only. However, individual transcript sequences of the same gene can differ through naturally occurring variations (e.g. polymorphisms), each with its own valid existence. This clone is substantially in agreement with the reference, but a complete review of all prevailing variants is recommended prior to use. [More info](#)

OTI Annotation: This clone was engineered to express the complete ORF with an expression tag. Expression varies depending on the nature of the gene.

Components: The ORF clone is ion-exchange column purified and shipped in a 2D barcoded Matrix tube containing 10ug of transfection-ready, dried plasmid DNA (reconstitute with 100 ul of water).

Reconstitution Method:

1. Centrifuge at 5,000xg for 5min.
2. Carefully open the tube and add 100ul of sterile water to dissolve the DNA.
3. Close the tube and incubate for 10 minutes at room temperature.
4. Briefly vortex the tube and then do a quick spin (less than 5000xg) to concentrate the liquid at the bottom.
5. Store the suspended plasmid at -20°C. The DNA is stable for at least one year from date of shipping when stored at -20°C.

RefSeq: [NM_018769.3](#), [NP_061239.1](#)

RefSeq Size: 2133 bp

RefSeq ORF: 1539 bp

Locus ID: 54722

UniProt ID: [Q9Z2D3](#)

Cytogenetics: 6 B2.3

Gene Summary: Plays a role in the TP53-regulated cellular response to DNA damage probably by cooperating with TP53.[UniProtKB/Swiss-Prot Function]