

Product datasheet for **MG218823**

Dmwd (NM_010058) Mouse Tagged ORF Clone

Product data:

Product Type:	Expression Plasmids
Product Name:	Dmwd (NM_010058) Mouse Tagged ORF Clone
Tag:	TurboGFP
Symbol:	Dmwd
Synonyms:	Dm9; DMR-N9
Mammalian Cell Selection:	Neomycin
Vector:	pCMV6-AC-GFP (PS100010)
E. coli Selection:	Ampicillin (100 ug/mL)



[View online »](#)

ORF Nucleotide Sequence:

>MG218823 representing NM_010058, **codon optimized**.
Due to the complexity of NM_010058, the ORF clone is codon optimized for mammalian Expression.
The nucleotide sequence differs from the reference sequence, yet the amino acid sequence remains identical.

Red=Cloning site Blue=ORF Green=Tags(s)

TTTTGTAATACGACTCACTATAGGGCGGCCGGAATTCGTCGACTGGATCCGGTACCGAGGAGATCTGCC
 GCC**CGCATCGCC**

ATGGCCGCCGGGGCGCCGAGGGAGGTCCAGGGCCAAGCGCAGCAATGGGCGACTGCGCCGAGATCAAAT
 CTCAGTTTAGGACCAGGGAGGGCTTTTACAATGCTGCCGGGAGATGCCACTAGGCGGTCCGGACCCAC
 CAGTGCCAGACCCAGCTCCACCACAGCTACACAGCCACCACCTGGCCCCGCGCCGAGTGGCCCC
 GGAGCAGCCGGCCCTGCCTCCAGCCCTCCTCCCGTGGTCCCGGACCCGGGCCTGCCCTCCCGCGGTGC
 GCCTTAGCCTTGTGCGCCTCGGGATCCCGACGGAGCCGGAGAGCCACCTCCACTCCATCTGGGCTTGG
 GGCGGGTGGAGACAGGGTGTGCTTCAACTTGGGGAGAGACTCTACTTCTACCCTGGATGCTGTCGACG
 GGCAGTCAACGAAGCATTGACCTCAACAACTATCGACAAAAGGATTTACAAGGGGACCCAGCCCACTT
 GCCACGACTTTAATCAGTTCACAGCAGCAACTGAGACAATCAGTCTGTTGGTCCGATTAGTGTGGCCA
 GGTCCAGTATTTGGACCTGATTAAGAAAGATACAAGTAACTGTTCAACGAAGAAAGGCTCATCGACAAA
 ACTAAAGTGACTTACCTAAGTGGCTGCCTGAGAGCGAAAGCCTTCTTGGCGTCCCACGCTAGCGGCC
 ACCTGTACCTGTATAACGTACGCATCCTTGCACTTCTACTCCTCCCAAGTATAGTCTGCTGAAGCAGGG
 CGAGGGGTTCCCGTGTACGCCGTAAGTCCAAGCCCCAAGAAACCCACTTGCAGAGTGGGCCGTGGGC
 GAAGGGCCCTCAACGAGTTTGCCTTTTCTCCCGACGGGAGACACCTGGCTTGTGTTTCCAGGACGGGT
 GCCTGCGAGTATTCACCTTTGATTCCATGCTTCTGAGGGGACTGATGAAGTCATATTTGGGGTCTGCT
 GTGTGTATGTTGGTCCCCTGATGGCAGGTATGTCGTGACGGGGGGGAGGACGACCTCGTACCGTTTGG
 TCCTTCACAGAAGGCCGAGTGGTAGCCCGGGGCATGGCCACAAGTCTTGGGTGAATGCCGTGGCGTTCC
 ATCCATACACAACCCGCGCTGAAGAGGCCGCTCTGCATCCGCTGACGGAGATCCATCTGGAGAGGAGGA
 AGAGCCCGAGGTTACATCTTCTGACACTGGTGCCCAAGTACGAGCCACTGCCAAAAGCTGGGTCCATTACC
 TACAGATTTGGAAGTCCCGGCCAAGACTCAATTCTGCCTTTGGGACCTCACGGAGGACGCTCTGAGCC
 CACACCCATCCCTGGCCCGGACCAGAACCCTCCCTGGTACACCAGGCGCTACACCTCCTGCAAGTGAAG
 CTCCCGCGCAGGAGAGACAGGCGCTGGGCCCTGCCGCGCAGCCTCTCAGGAAGCAATTCTGCCCCAC
 CCCGCTGGAGGCGGAAAGCCGGAGGACCCAGCGCCTCCATGGAGCCAGGTATTCATTACGATCGGCC
 GGTTCCGCCACCCTTACACTGCAGGAGCGACGAGACAGAGGCGCTGAGAAAAGACACAAGCGGTATCACTC
 TCTGGGAAATAAAGCAGAGGGGGTCCAGGCGGGAATAGTTCTAATGATAAGCTGAGCGGCCCTGCGCCC
 CGATCCCGCTGGATCCCGCAAGGTCTTGGTACAGCGCTCTGCCCTCGGATCCATGAAGTGCCTCTTC
 TGAACCACTCGTTTGAAGAAGATCGCTCAGGAAAGACTGACCGTTCTCCTGTTTCTCGAGGATTGCAT
 TATCACAGCGTGCCAGGAGGGATTGATTTGCACATGGCTAGACCCGAAAAGCCTTTACCGATGAAGAA
 ACAGAAGCCAGGCTGGTCAGGCCTCATGGCCACGCTCCCGTCTAAAAGCGTAGTAGAGGGAATCAGTA
 GCCAACCCAGGAAGTCCCTTCCGGTACCGTGGTT

ACGCGTACGCGGCCGCTCGAG – GFP Tag – GTTTAA

Protein Sequence: >MG218823 representing NM_010058
 Red=Cloning site Green=Tags(s)

```

MAAGGAEGGPGPSAAMGDCAEIKSQFRTREGFYKLLPGDATRRSGPTSAQTPAPPQPTQPPPGPAAASGP
GAAGPASSPPPAGPGPALPAVRLSLVRLGDPDGAGEPPSTPSGLGAGGDRVCFNLGREL YFYPGCCRS
GSQRSIDLNKPIDKRIYKGTQPTCHDFNQFTAATETISLLVGFSAQVQYLDLIKKDTSKLFNEERLIDK
TKVITYLKWLPESESLFLASHASGHL YLYNVSHPCSTSTPPQYSLLKQGEF AVYAAKSKAPRNPLAKWAVG
EGPLNEFAFSPDGRHLACVSQDGCLR VVHFDSMLLRGLMKSYFGLLCVCWSPDGRYVVTGGEDDLVTW
SFTEGRVVARGHGHSWVNAVAFDPYTTTAAEAAASASADGDPSEEEEEPEVTSSTDGAPVSPLPKAGSIT
YRFGSAGQDTQFCLWDLTEDVLSHPHSLARTRTLPGTPGATPPASGSSRAGETGAGPLPRSLSRNSLPH
PAGGGKAGGPSASMEPGIPFSIGRFATLTLQERRDRGAEKEHKRYHSLGNI SRGGSGNNSNDKLSGPAP
RSRLDPAKVLGTALCPRIHEVPLLEPLVCKKIAQERLTVLLFLEDCIITACQEGLICTWARPGKAFDTEE
TEAQAGQASWPRSPSKSVVEGISSQPGSSPSGTVV
  
```

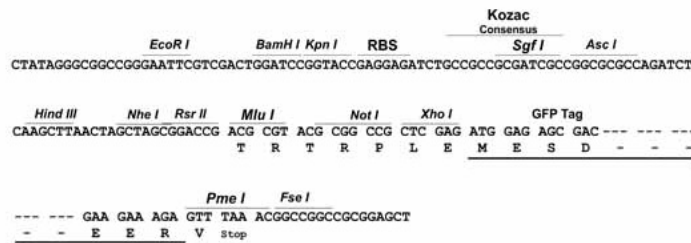
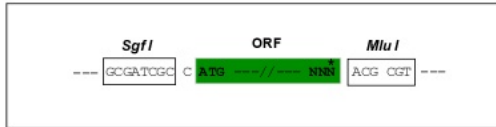
TRTRPLE - GFP Tag - V

Restriction Sites:

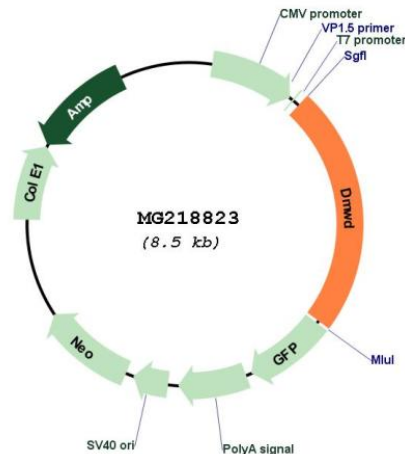
SgfI-MluI

Cloning Scheme:

Cloning sites used for ORF Shuttling:



Plasmid Map:



ACCN: NM_010058

ORF Size: 1995 bp

OTI Disclaimer: The molecular sequence of this clone aligns with the gene accession number as a point of reference only. However, individual transcript sequences of the same gene can differ through naturally occurring variations (e.g. polymorphisms), each with its own valid existence. This clone is substantially in agreement with the reference, but a complete review of all prevailing variants is recommended prior to use. [More info](#)

OTI Annotation: This clone was engineered to express the complete ORF with an expression tag. Expression varies depending on the nature of the gene.

Components: The ORF clone is ion-exchange column purified and shipped in a 2D barcoded Matrix tube containing 10ug of transfection-ready, dried plasmid DNA (reconstitute with 100 ul of water).

Reconstitution Method:

1. Centrifuge at 5,000xg for 5min.
2. Carefully open the tube and add 100ul of sterile water to dissolve the DNA.
3. Close the tube and incubate for 10 minutes at room temperature.
4. Briefly vortex the tube and then do a quick spin (less than 5000xg) to concentrate the liquid at the bottom.
5. Store the suspended plasmid at -20°C. The DNA is stable for at least one year from date of shipping when stored at -20°C.

RefSeq: [NM_010058.2](#), [NP_034188.2](#)

RefSeq Size: 2520 bp

RefSeq ORF: 1998 bp

Locus ID: 13401

UniProt ID: Q08274

Cytogenetics: 7 9.46 cM