

## Product datasheet for **MG218816**

### Shank2 (NM\_001081370) Mouse Tagged ORF Clone

#### Product data:

Product Type:	Expression Plasmids
Product Name:	Shank2 (NM_001081370) Mouse Tagged ORF Clone
Tag:	TurboGFP
Symbol:	Shank2
Synonyms:	mKIAA1022; ProSAP1
Mammalian Cell Selection:	Neomycin
Vector:	pCMV6-AC-GFP (PS100010)
E. coli Selection:	Ampicillin (100 ug/mL)
ORF Nucleotide Sequence:	>MG218816 representing NM_001081370 Red=Cloning site Blue=ORF Green=Tags(s)

TTTTGTAATACGACTCACTATAGGGCGGCCGGAATTCGTCGACTGGATCCGGTACCGAGGAGATCTGCC  
GCC**CGATCGCC**

ATGATGAGCGTCCCCGGCGGTGGAGCAGCCACCGTGATGATGACCGTTACAATAATGGTCGCTATCCCC  
GGAATTCTCTCTACAGTGACTGCATTATTGAGGACAAGACGGTGGTCTGCAAAAGAAGGACAACGAGGG  
CTTTGGATTTGTGCTCCGAGGGGCAAAGCCGATACCCCCATTGAGGAATTCACACCCACGCCAGCATT  
CCAGCCCTGCAGTACCTGGAGTCCGTGGATGAAGGTGGGGTGGCATGGCAAGCCGGACTAAGGACCGGG  
ACTTCTTGATTGAGGTTAACAATGAAAATGTCGTCAAGGTGGGCCACAGGAGGTGGTGAACATGATCCG  
CCAGGGAGGGAATCACCTCATCCTTAAGGTCGTACGGTGACCAGGAATCTAGACCCTGATGATACAGCC  
AGAAAGAAAGCTCCCCACCTCCAAAGCGGGCTCCGACCAGGCCCTCACCTGCGTTCCAAGTCCATGA  
CAGCGGAGTTGGAGGAACTCGTGGACAAAGCCTCAGTCCGGAAGAAGAAGGATAAACCGGAAGAGATAGT  
CCCAGCCTCCAAGCCCTCCAGGACTGCAGAGAAGTGGCCATCGAATCCAGGGTGGCGACCATCAAGCAG  
CGGCCACAAGCCGGTGTCTCCAGTGCCTCTGATGTGAATTCGTGTACGAGCGCCAAGGGATTGCTG  
TAATGACGCCACGGTCCCTGGGAGCCGAAAGGCCATTTCTGGGCCTCCCTCGAGGTACGATGCGAAG  
GCAGAAATCGATAGACAGCAGAATCTTTCTATCAGGGATAACAGAGGAAGAGCGGCAGTTTCTGGCTCCC  
CCAATGCTGAAGTTCACCCGAAGCTTGCCATGCCAGACACTTCTGAGGACATCCCCCTCCGCCACAGT  
CTGTGCCCCCTCTCCCCCTCTCCTTCCCCACACATACAACGTGCCAGGTCCCCGACTCCAAGAGT  
CTATGGGACAATTAAGCCCGCTTCAATCAGAACCCCGTTCGTCGCAAGGTGCCCCAGCCACCAGGTCT  
GACACTGTGGCCACCATGATGCGGGAAAAGGGATGTTCTACAGGAGAGAGCTGGACAGATTTTCCCTGG  
ACTCAGAAGAGCTTACAGCCGAGCCCGCCCCACAGGCCGCTTCCGACCAAGCGGGACAGATGCC  
TGAGAACCCGTAAGAGGTGGAAAGATAGCCAGCAAGGCCGTCTATGTCCCTGCCAAGCCAGCCAGG  
CGGAAGGGCGTGTGGTAAAGCAGTCCAACGTGGAGGATAGCCCCGAGAAGACGTGCTCCATACCCATCC  
CAACCATCATCGTCAAGGAACCTCCACCAGCAGCAGCGCAAGAGCAGCCAGGGGAGCAGCATGGAGAT  
TGACCCCAAGCCACCGAGCCCGCCAGCTGCGCCAGATGACAGCCTCACCGTACGAGCCCTTTGCT



[View online »](#)

GCGGCCATCGCTGGGGCTGTGCGTGACCGGGAGAAGCGTCTGGAAGCCAGGAGGAATCCCCAGCCTTCC  
TCTCCACCGACCTGGGAGATGAGGACGTGGGTCTGGGGCCGCCTGCTCCCCGGATGCAGGCCTCCAAGTT  
CCCAGAGGAGGGTGGGTTTGGTGACGAGGATGAGACGGAACAACCGCTGTTGCCTACCCCCGGGGCAGCA  
CCCAGGGAGCTGGAGAATCACTTCTAGGTGGTGGTGAGGCTGGTGCTCAGGGGGAGGCTGGGGGACCCC  
TGAGTTCCACATCCAAAGCCAAGGGCCCTGAGAGTGGCCAGCAGCCCCCTCAAGAGCAGCAGCCCAGC  
CGGCCCTGAGAATTACGTGCACCCACTCACAGGGCGGTGCTTGACCCAGCTCCCCACTGGCCCTGGCA  
CTCTCAGCCAGGGACCGAGCCATGCAGGAGTCCCAGAGGGGCACAAAGGAGAGGCCCCCAAGGCTGACC  
TTAAACAAGCCTCTCTACATCGATACCAAAATGCGGCCAGCGTGGAGTCCGGCTTTCCTCCAGTACCAG  
ACAGAACCACAGGGGTCCCTGCGACGGCAAGAGACAGAGAACAAGTACGAGACAGACCTGGGCAAGGAC  
CGGAGGGCGGACGACAAGAAGAACATGCTGATCAACATCGTGGACACTGCCAGCAGAAGTCAGCTGGCC  
TACTGATGGTGACACAGTGGACGTCCCCATGGCCGGGCCACCCCTGGAGGAAGAGGAGGACAGAGAGGA  
TGGGGATACAAAGCCAGACCACTCACCTCCACAGTGCCAGAAGGCGTTCACAAAACCGAAGGTGCTTTA  
CAGATCTCGCTGCCCGGAGCCCGCCGTCGCGCCGGCAGGACCATCGTGGCGGGGGTCCGTGGAAG  
AGGCGGTGATTCTGCCATTCGCATCCCCCTCCCCCTCGGCATCCGTGGACTTGGATGAGGACTTTCT  
TTTCACAGAACCCTTGCCTCCCCCTGGAATTCGCAATAGTTTGGATATCCCCGATGACCGGGCAGCT  
TCAGTTCCCGCTCTGGCTGACCTGGTCAAGCAGAAGAAAACGACACCCCTCAGCCCCCTACGTTGAACT  
CCAGCCAACCAGCCAACCTCCACAGACAGTAAGAAGCCAGCCGGTATCTCGAACTGTCTGCCCTCCTCGTT  
CCTGCCACCCCCGAAAGTTTCGATGCAGTCAACGACTCGGGGATTGAGGAGGTGGACAGCCGGAGTAGC  
AGCGACCAACCACTGGAGACTACCAGCACCATCTCCACGGTGTCCAGCATCTCCACGCTGTCTCAGAGG  
GCGGCGAGAGCATGGACACCTGCACAGTCTATGCAGACGGGAAGCCTTTGTGGTTGACAAGCCCCCAGT  
ACCTCCAAAGCCAAAAATGAAGCCATCGTTCACAAGAGCAACGCACTTTACCAAGACACGCTCCAGAA  
GAGGACACGGATGGCTTTGTGATCCCCCACCTGCACCCCGCCCGGGCAGCGCCAGCCGGT  
TGGCGAAGGTCACTCCAGCCAAGGACCTCAAGTTGTGGGTGACGTTCCAGAGGTCAAAGCCCAATTCT  
CTCAGGCCCAAAGGCAAATGTCATTAGTGAGCTAAACTCCATTCTGCAGCAGATGAACAGGGGAAATCG  
GTCAAGCCCGGGGAAGGGCTGGAGCTGCCGGTGGGAGCCAAGTCGGCCAACCTCGCTCCAAGAAGCCCGG  
AGGTGATGAGCACCGTCTCAGGTACACGGAGCAGCAGGTCACCTTCACTGTCCGCCCTGGCACCTCCCA  
GCCCATCACCTGCAGAGCCGGCCCCCGACTATGAAAGCAGAACCTCAGGACCTAGACGCGCCCCAAGC  
CCTGTGGTTTACCAACGGAATTGAGCAAAGAGATCCTGCCACCCCTCCCCCTCCGTCCGCCACTGCAG  
CCTCTCCCTCCCCCACTCTCAGATGTCTTTAGCCTTCCGAGCCAGTCCCCTGCAGGGGACCTCTTTGG  
CTTGAACCCAGCAGGACGGAGCAGGTACCATCTCCTTCAATATTGCAACAGCCAATCTCAATAAGCCT  
TTTACAATAAGCCTGTCCACCTGTGGACGAAACCAGATGTGGCAGACTGGCTGGAAAGTCTGAACTTGG  
GTGAACACAAGGAGACGTTTCATGGACAATGAGATTGACGGCAGCCACCTGCCAAACCTTCAAGGAAGA  
CTTGATAGATCTTGGGTGACTCGAGTTGGGCATAGGATGAACATAGAAAGGGCTTTGAAACAGTGCTG  
GACAGA

ACGCGTACGCGGCCGCTCGAG - GFP Tag - GTTTAA

**Protein Sequence:** >MG218816 representing NM\_001081370  
 Red=Cloning site Green=Tags(s)

```

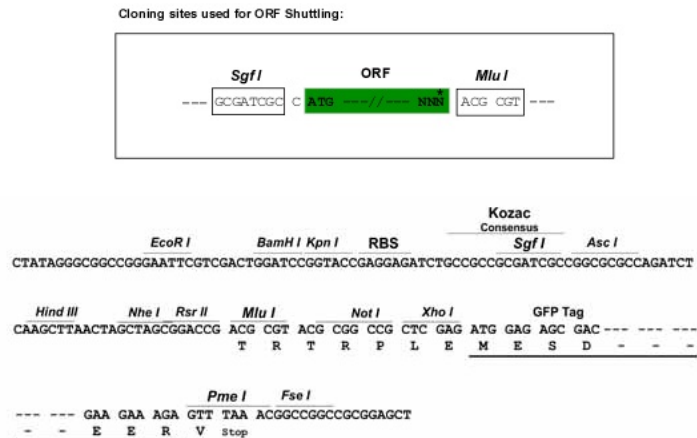
MMSVPGGGAATVMMTGYNNGRYPRNSLYSDCIIEDKTVVLQKKDNEGFGFVLRGAKADTPIEEFTPTPAF
PALQYLESVDEGGVAWQAGLRTGDFLIEVNNENVVKGHRQVVMIRQGGNHLILKVTVTRNLDPDDTA
RKKAPPPPKRAPTTALTLRSKSMTAELEELVDKASVRKKKDKPEEIVPASKPSRTAENVAIESRVATIKQ
RPTSRCFPAASDVNSVYERQGIAVMTPTVPGSPKGFLLGLPRGTMRRQKSIDSRIFLSGITEEERQFLAP
PMLKFTRLSMPDTSIEDIPPPQSVPPSPPTTYNCPRSPTPRVYGTIKPAFNQNPVAVKVPATRS
DTVATMMREKGMFYRRELDRLFSLDSEDVYSRSPAPQAFAFRTRKRGQMPENPYSEVGKIASKAVYVPAKPAR
RKGVLVKQSNVEDSPEKTCPIPTIIVKEPSTSSSGKSSQGSSMEIDPQATEPGQLRPDDSLTVSSPFA
AAIAGAVRDREKRLRARNSPAFLSTDLGDEDVGLGPPAPRMQASKFPEEGGFGDEDETEQPLLPTPGAA
PRELENHFLGGGEAGAQQEAGGPLSSTSKAKGPESGPAAPLKSSSPAGPENYVHPLTRGLLDPSPLALA
LSARDRAMQESQQGHKGEAPKADLNKPLYIDTKMRPSVESGFPPVTRQNRGRLRRQETENKYETDLGKD
RRADDKKNMLINIVDTAQQKSAGLLMVHTVDVPMAGPPEEEEDREDGDKPDHSPSTVPEGVPKTEGAL
QISAAPEPAVAPGRTIVAAGSVEEAVILPFRIPPPPLASVDLDEDFLFTTEPLPPPLEFANSFDIPDDRAA
SVPALADLVKQKNDTPQPPTLNSSQPANSTDSKPKAGISNCLPSSFLPPPEFSDAVTDSGIEEVDSSRS
SDHHLETTSTISTVSSISTLSSEGGESMDTCTVYADGQAFVVDKPPVPPKMKPIVHKSNALYQDTLPE
EDTDGFVIPPAPPPGSAQAGVAKVIQPRTSKLGWDVPEVKSPILSGPKANVISELNSILQQMNRGKS
VKPGEGLLELPGAKSANLAPRSPEVMSTVSGTRSTTVTFVTRPGTSQPITLQSRPPDYESRTSGPRRAPS
PVVSPTLSEILPTPPPSATAASPSPTLSDVFLSPSQSPAGDLFGLNPAGRSRSPSPSILQQPISNKP
FTTKPVHLWTKPDVADWLESLNLGEHKEFTMDNEIDGSHLPNLQKEDLIDLGVTRVGRHMNIERALKQLL
DR
  
```

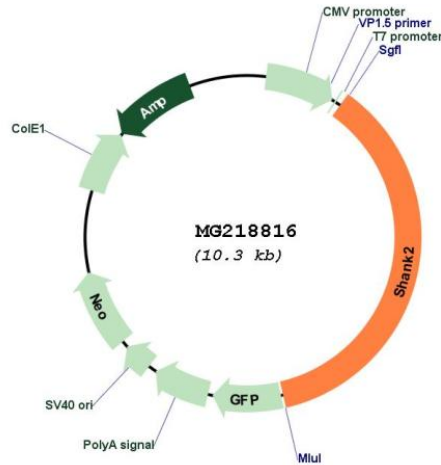
TRTRPLE - GFP Tag - V

**Restriction Sites:**

SgfI-MluI

**Cloning Scheme:**



**Plasmid Map:**


**ACCN:** NM\_001081370

**ORF Size:** 3786 bp

**OTI Disclaimer:** The molecular sequence of this clone aligns with the gene accession number as a point of reference only. However, individual transcript sequences of the same gene can differ through naturally occurring variations (e.g. polymorphisms), each with its own valid existence. This clone is substantially in agreement with the reference, but a complete review of all prevailing variants is recommended prior to use. [More info](#)

**OTI Annotation:** This clone was engineered to express the complete ORF with an expression tag. Expression varies depending on the nature of the gene.

**Components:** The ORF clone is ion-exchange column purified and shipped in a 2D barcoded Matrix tube containing 10ug of transfection-ready, dried plasmid DNA (reconstitute with 100 ul of water).

**Reconstitution Method:**

1. Centrifuge at 5,000xg for 5min.
2. Carefully open the tube and add 100ul of sterile water to dissolve the DNA.
3. Close the tube and incubate for 10 minutes at room temperature.
4. Briefly vortex the tube and then do a quick spin (less than 5000xg) to concentrate the liquid at the bottom.
5. Store the suspended plasmid at -20°C. The DNA is stable for at least one year from date of shipping when stored at -20°C.

**RefSeq:** [NM\\_001081370.2](#), [NP\\_001074839.2](#)

**RefSeq Size:** 5913 bp

**RefSeq ORF:** 3789 bp

**Locus ID:** 210274

**UniProt ID:** [Q80Z38](#)

**Cytogenetics:** 7 F5

**Gene Summary:**

Seems to be an adapter protein in the postsynaptic density (PSD) of excitatory synapses that interconnects receptors of the postsynaptic membrane including NMDA-type and metabotropic glutamate receptors, and the actin-based cytoskeleton. May play a role in the structural and functional organization of the dendritic spine and synaptic junction (By similarity).[UniProtKB/Swiss-Prot Function]