

## Product datasheet for **MG218812**

### Cuzd1 (NM\_008411) Mouse Tagged ORF Clone

#### Product data:

Product Type:	Expression Plasmids
Product Name:	Cuzd1 (NM_008411) Mouse Tagged ORF Clone
Tag:	TurboGFP
Symbol:	Cuzd1
Synonyms:	Erg-1; Itmap1; Uo-44; Usg; Utczp
Mammalian Cell Selection:	Neomycin
Vector:	pCMV6-AC-GFP (PS100010)
E. coli Selection:	Ampicillin (100 ug/mL)



[View online »](#)

**ORF Nucleotide Sequence:**

>MG218812 representing NM\_008411  
 Red=Cloning site Blue=ORF Green=Tags(s)

TTTTGTAATACGACTCACTATAGGGCGGCCGGAATTCGTCGACTGGATCCGGTACCGAGGAGATCTGCC  
 GCC**GCGATCGCC**

ATGGAGGTCACCTGGAAGGCTGTTCATCTGGGCTATTTAGCTGTCTCCTGTGGGACAGCTGAATTCTA  
 CAGAGGCTGAAGGCAAATCAAGATGCACAGCCAGTCTGGGAGGGCCAATCTGGGAGAGACCCATAAAGC  
 CCTGGTCTACAGCTCAGTGCGAATGAGAACTGCACTTGACCATAGAGAGACCTGAAAACAGGAGCATC  
 AGAATCATCTTCTCCTACATCAAGTTGGATCCAGGCAGCAGGTGTGAAACTGAAAACATTAAGGTGTTTG  
 ATGGAAGCTCCACCAGTGGGCTCTGCTAGGGAAGGCCTGCAGCAGAAAATGATTCGTCCTGTGTTTGA  
 ATCATCATCCAACCTCGATGACATTTAGATAGTCACTGGCTTGACAAAAGTTCCCAAGGAGTGTCTTTATC  
 TTCTACTATTTTTCTCCGCTGCTACCGTTATTCCAACTGCGGTGGTACCTGCGAGCATTGGAAGGGT  
 CCTTCAGCAGCCCAATTATCCAAAGCCGACCCTGAGCTGGCATATTGTGTCTGGCACATAAAGTGGG  
 GAAAGGCTATAAGATAACAATTGAAGTTACAGATCTTACTAGAGATGGATGAAAACCTGCAAGTTTGAT  
 TTCATCGCAGTCTACGATGGCCCTCCACCACGGCAGGCCTGCTCAAACAACCTCTGCGGCCGTGGGAAGC  
 CTACCTTAGAATCTTCTCTGACGCCATGACTGTCGTGCTATCTACAGATTATGCCAATTCCTACAAGG  
 ATTTTCTGCTTCTACACTTCAATTTACATCCACGATGTCAACACTACATCTCTAAGTTGTGTTTCTGAC  
 AAGATGAGAGTCAATCAAGCAAATCATACCTACCGGCACTCAACTACAATGAGAGCAATTTGCAGCTAA  
 ATGACCAACTTGCAGACCGAATGTATCAAATGTCATAGAGTTCTCTATCCCTCTGCACGAATGCGGTAC  
 AGTCAAAAAGTAGAGGACCACGCGATCAGCTATACCAACAGGATCACCTTCATCGAGTCTCCGGTCTCT  
 GCTGTGATCACCCGACAGAAGCTCCTCCAGATCGTGGTACCTGTGAGATGGAGTATAAAGTGGGTTGG  
 AGATTATGTACATAACTGAAGACGACATCATAACAAGCAGAGTGTCTGGGCAAATAACAACACCAGCT  
 GGCTCTCTATGAGTCCGACTCATTGAAAACCTCGTACAGGAGTACCATATTATGTAGACTTGAACCCAG  
 ACTCTCTTTGTCGAAGCCACCTGCACACCTCGGATCCAAGCCTGGTGGTGTCTGACTTGCAGAG  
 CCTCGCTACGTCGACTTTGCATCTCCAACCTACGACTTAATCAGCAGCGGATGTTGTCAAGATGAGAC  
 CTGTAAGGTGATCCCTATTTGGGCACTATGGAAGGTTCCAGTTTAAATGCCTTAAATCTTGAACAT  
 CTCAACTCTGTGATCTCAAGTGAAGATTTGATATGTGATAACAATGACCAACATCTCGCTGCAATC  
 AAGGCTGTGTCCAAGAAGGAAACGGGATATCCTTCTCAAAATGGAAGACTGACTCTGTTATAGGACC  
 CATTGCTGTAAGAGGGACCGAAGTCAAGTAGAGATTGAGACTTCTGCCTCAAATACATGAAGCAGAA  
 ATTTCAAACCAGCCCTCAGTCGCTGTACCTGTTTCTTCATGTTCTTGCCTAAATGTGGTGATTG  
 TGGCGATAACCACAGTGAAGCATTTCCTAAATCGGTGGATGGATCACAGATACCAGAAGCTGCAGGTCTA  
 C

**ACGCGTACGCGGCCGCTCGAG** - GFP Tag - GTTTAA

**Protein Sequence:**

>MG218812 representing NM\_008411  
 Red=Cloning site Green=Tags(s)

MEVTGRLFIWAILAVSCGAQLNSTEAEGKSRCTASLGGANLGETHKALVLQLSANENCTWTIERPENRSI  
 RIIFSYYIKLDPGSRCETENIKVFDGSSTSGPLLGKACSRNDFVPVFESSNSMTFQIVTGLTKFPRSVFI  
 FYYFFSAATVIPNCGDLRALLEGFSFPNYPKHPPELAYCVWHIQVGKGYKIQLKFTDLLLEMDENCKFD  
 FIAVYDGPSTTAGLLKQLCGRGKPTLESSDAMTVVLSTDYANSYKGFSAYSYSIYIHDVNTTSLSCVSD  
 KMRVVIISKSYLPALNYNESNLQLNDPTCRPNVSNVIEFSIPLHECGTVKVKIEDHAI SYTNRITFIESPVS  
 AVITRQKLLQIVVTCEMEYNSTVEIMYITEDDIIQNQSVLGKYNTSLALYESDSFENLVQESPPYVDLQ  
 TLFVQATLHTSDPSLVVFLDTCRASPTSDFASPTYDLISSGCCQDETCKVYPLFGHYGRFQFNAFKFLKH  
 LNSVYLKCKILICDNDQTSRCNQGCVPRRKRDI PSYKWKTD SVIGPIRLKRDRSASRDSGLLPQIHEAE  
 ISNQPLSRLYLFSFMVLALNVVIVAITTVKHFLNRWMDHRYQKLQVY

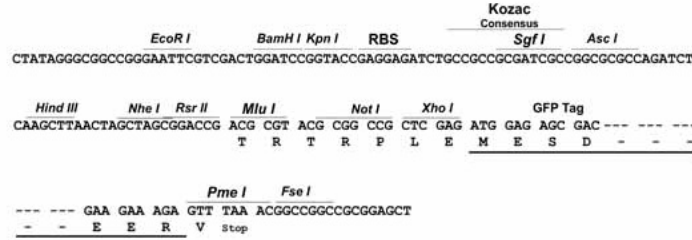
**TRTRPLE** - GFP Tag - V

**Restriction Sites:**

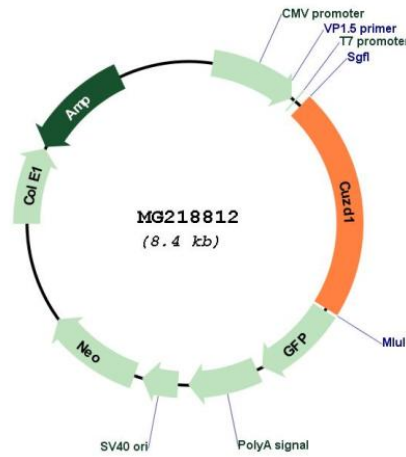
SgfI-MluI

Cloning Scheme:

Cloning sites used for ORF Shutting:



Plasmid Map:



ACCN: NM\_008411  
 ORF Size: 1821 bp

<b>OTI Disclaimer:</b>	The molecular sequence of this clone aligns with the gene accession number as a point of reference only. However, individual transcript sequences of the same gene can differ through naturally occurring variations (e.g. polymorphisms), each with its own valid existence. This clone is substantially in agreement with the reference, but a complete review of all prevailing variants is recommended prior to use. <a href="#">More info</a>
<b>OTI Annotation:</b>	This clone was engineered to express the complete ORF with an expression tag. Expression varies depending on the nature of the gene.
<b>Components:</b>	The ORF clone is ion-exchange column purified and shipped in a 2D barcoded Matrix tube containing 10ug of transfection-ready, dried plasmid DNA (reconstitute with 100 ul of water).
<b>Reconstitution Method:</b>	<ol style="list-style-type: none"><li>1. Centrifuge at 5,000xg for 5min.</li><li>2. Carefully open the tube and add 100ul of sterile water to dissolve the DNA.</li><li>3. Close the tube and incubate for 10 minutes at room temperature.</li><li>4. Briefly vortex the tube and then do a quick spin (less than 5000xg) to concentrate the liquid at the bottom.</li><li>5. Store the suspended plasmid at -20°C. The DNA is stable for at least one year from date of shipping when stored at -20°C.</li></ol>
<b>RefSeq:</b>	<a href="#">NM_008411.3</a> , <a href="#">NP_032437.3</a>
<b>RefSeq Size:</b>	2270 bp
<b>RefSeq ORF:</b>	1824 bp
<b>Locus ID:</b>	16433
<b>Cytogenetics:</b>	7 F3