

Product datasheet for **MG218809**

Pth2r (NM_139270) Mouse Tagged ORF Clone

Product data:

Product Type:	Expression Plasmids
Product Name:	Pth2r (NM_139270) Mouse Tagged ORF Clone
Tag:	TurboGFP
Symbol:	Pth2r
Synonyms:	Pthr2
Mammalian Cell Selection:	Neomycin
Vector:	pCMV6-AC-GFP (PS100010)
E. coli Selection:	Ampicillin (100 ug/mL)



[View online »](#)

ORF Nucleotide Sequence:

>MG218809 representing NM_139270
 Red=Cloning site Blue=ORF Green=Tags(s)

TTTTGTAATACGACTCACTATAGGGCGGCCGGAATTCGTCGACTGGATCCGGTACCGAGGAGATCTGCC
 GCC**CGCATCGCC**

ATGGCCTGGCTGGAGACTTTCACCTACATTTGTGGATGGCTGATTCTCAGTAGCTGTCTCCTGGTTAGAG
 CGCAGCTGGATTCTGACGCGACCATCACTATAGAAGAGCAGATTGTTCTTGTATGAAGGCTAAAAATGCA
 GTGTGAACTTAACATCACAGCCCAGCTCCAAGAAGGAGAAGGCAATTGCTTCCCAGAATGGGATGGGATC
 ATTTGTTGGCCCAGAGGAACAGTGGGAAAAATGTCAGCTGTGCCTTGCCTCCGTATGTTTACGACTTCA
 ATCATAAAGGAGTTGCTTCCGGCACTGCACCCCAATGGGACGTGGGATTCTATTCATGGCTCAAATAA
 AACCTGGGCTAACTATTCAGACTGCTTCTGCAGCCTGATATCAACATAGGAAAGCAAGAGTTCTTTGAA
 AGCCTCTACATCCTGTACACTGTTGGCTACTCCATCTCTTTGGCTCCTGGCTGTAGCCATTCTCATT
 TTGGCTACTTCAGGCGATTGCATTGCACGAGGAATATATCCATTTGCATTTGTCGTGCTCCTCATGCT
 GAGAGCCATGAGCATCTTTGTCAAGGACAGAGTAGCCAGGCTCACCTGGGAGTAGAGGCACTGCAGTCT
 CTGGTGATGCAGGGTACCTTCAGAATTCATTGGAGGACCATCTGTGGACAAATCTCAGTATGTGGGGT
 GCAAGATCGCTGTCGTGATGTTATTTATTTCTTGGCTACAAACTATTACTGGATCCTGGTGGAAAGGGCT
 CTACCTGCACAACCTAATCTTTGTGCTTTCTTTCCGACACCAATACCTGTGGGGCTTCATCTCGATA
 GGCTGGGGATTTCCAGCAGTATTTGTTGTGGCCTGGGAGTGGCAGGCACTCTGGCGGATACCAGGT
 GTTGGGAACCTTAGTGCTGGAGACAGGTGGATTTACCAGGCTCCGATCTTAGCTGCTATTGGGCTGAATTT
 TATTCTGTTCTGAATACAGTTAGAGTTCTTGTACCAAAATTTGGGAAACCAATGCGGTTGGGCATGAC
 ATGAGAAAGCAGTACAGGAACTGGCTAAGTCAACTGGTCTGGTGTGTTGTTGCGTGCATTACA
 TCGTGTGTTGCTGCCAGCCGACTCCTTCTCTGGGCTCTGGTGGGAGATCCGCATGCATGTGAACCTCTT
 CTTCAACTCCTTCCAGGGTTTCTTCGTGTCTATTGTCTATTGCTACTGCAATGGAGAGGTGCAGGCTGAG
 GTGAAGAAGATGTGGACTCGATGGAATCTGTCCATCGACTGGAAGGGCGCCGCTTGTGGCGGCCAAA
 GGTACGGCTCGGTGCTCACCCTGTCACTCACAGCACCAGCAGCCAGTCACAGATGGGGGCAAGCACGCG
 CCTGGTGTCTATCTCTGGCAAACCCACCAAGAATGCCTGCAGACAGATCGACAGCCATGTGACTCTACCT
 GGCTATGTCTGGAGTAGTTCTGAGCAGGACTGCCAAACACTCGCCCCCGAGGAGACTAAGGAAGGTC
 ACAGGCGACAGGGAGATGATAGTCCAGTATGGAGTCTTCCAGGCCAGTGGCGTTACCCTAGACTGA
 AGGATGCAAGGGAGAAACCCATCCTATC

ACGCGTACGCGGCCGCTCGAG – GFP Tag – GTTTAA

Protein Sequence:

>MG218809 representing NM_139270
 Red=Cloning site Green=Tags(s)

MAWLETFTYICGWLILSSCLLVRAQLDSDGTITIEEQIVLVMKAKMQCELNITAQLQELEGNCFPPEWDGI
 ICWPRGTVGKMSAVPCPPYVYDFNHKGVAFRHCTPNGTWDSIHGSNKTWANYSDCFLQPDINIGKQEFFE
 SLYIILYTVGYSISFGLAVAILIIGYFRRLHCTRYIHLHLFVSFMLRAMSIFVKDRVAQHLGVEALQS
 LVMQGDQLQNFIGGPSVDKSYVVGCKIAVVMFIYFLATNYWILVEGLYLHNLIFVSFFSDTKYLWGFISI
 GWGFPAVAVVAVARATLADTRCWELSAGDRWIYQAPILAAIGLNFILFLNTRVRLATKIWETNAVGH
 MRKQYRKLAKSTLVLVLFVGVHYIVFVCPHSFSLWWEIRMHCELFNSFQGFVSIIVCYCNGEVQAE
 VKKMWTRWNLSIDWKRAPPCGGQRYGSVLTTVTHSTSSQSQMGASTRLVLSGKPTKNACRQIDSHVTL
 P
 GYVSSSEQDCQTHSPPEETKEGHRHQDSDSPVMESSRPVAFITLDTEGCKGETHP

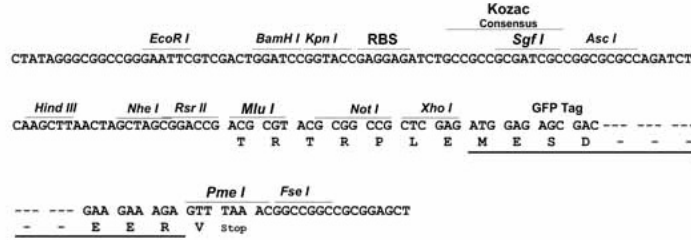
TRTRPLE – GFP Tag – V

Restriction Sites:

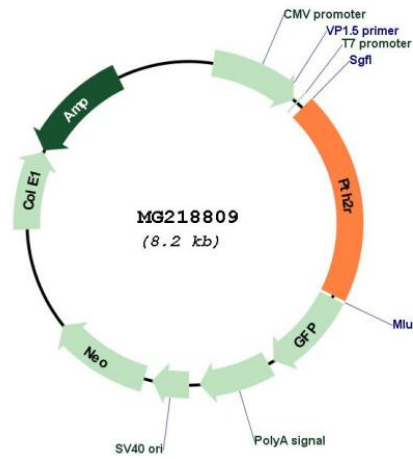
Sgfl-MluI

Cloning Scheme:

Cloning sites used for ORF Shutting:



Plasmid Map:



ACCN:	NM_139270
ORF Size:	1638 bp
OTI Disclaimer:	The molecular sequence of this clone aligns with the gene accession number as a point of reference only. However, individual transcript sequences of the same gene can differ through naturally occurring variations (e.g. polymorphisms), each with its own valid existence. This clone is substantially in agreement with the reference, but a complete review of all prevailing variants is recommended prior to use. More info
OTI Annotation:	This clone was engineered to express the complete ORF with an expression tag. Expression varies depending on the nature of the gene.
Components:	The ORF clone is ion-exchange column purified and shipped in a 2D barcoded Matrix tube containing 10ug of transfection-ready, dried plasmid DNA (reconstitute with 100 ul of water).
Reconstitution Method:	<ol style="list-style-type: none">1. Centrifuge at 5,000xg for 5min.2. Carefully open the tube and add 100ul of sterile water to dissolve the DNA.3. Close the tube and incubate for 10 minutes at room temperature.4. Briefly vortex the tube and then do a quick spin (less than 5000xg) to concentrate the liquid at the bottom.5. Store the suspended plasmid at -20°C. The DNA is stable for at least one year from date of shipping when stored at -20°C.
RefSeq:	NM_139270.2 , NP_644676.1
RefSeq Size:	2414 bp
RefSeq ORF:	1641 bp
Locus ID:	213527
UniProt ID:	Q91V95
Cytogenetics:	1 33.05 cM
Gene Summary:	This is a specific receptor for parathyroid hormone. The activity of this receptor is mediated by G proteins which activate adenylyl cyclase. PTH2R may be responsible for PTH effects in a number of physiological systems. It may play a significant role in pancreatic function. PTH2R presence in neurons indicates that it may function as a neurotransmitter receptor (By similarity).[UniProtKB/Swiss-Prot Function]