

## Product datasheet for **MG218749**

### Hnrnpm (NM\_001109913) Mouse Tagged ORF Clone

#### Product data:

Product Type:	Expression Plasmids
Product Name:	Hnrnpm (NM_001109913) Mouse Tagged ORF Clone
Tag:	TurboGFP
Symbol:	Hnrnpm
Synonyms:	2610023M21Rik; AA409009; Hnrpm; mKIAA4193
Mammalian Cell Selection:	Neomycin
Vector:	pCMV6-AC-GFP (PS100010)
E. coli Selection:	Ampicillin (100 ug/mL)



[View online »](#)

ORF Nucleotide  
Sequence:

>MG218749 representing NM\_001109913  
Red=Cloning site Blue=ORF Green=Tags(s)

TTTTGTAATACGACTCACTATAGGGCGGCCGGGAATTCGTCGACTGGATCCGGTACCGAGGAGATCTGCC  
GCCCGCATCGCC

ATGGCGGCAGGGTCTGAAGCGGCAGCCGAAGTGGCGGCACAGAACCCTAAATGGAGGAAGAGAGCGGCG  
CGCCTGCGTGCCGAGCGCAACGGAGCTCCGGGCCCGAAGGGTGAAGAACGACCTACTCAGAATGAGAA  
GAGGAAGGAGAAAAACATAAAAAAGAGGAGGCAATCGCTTTGAGCCATATTCACCAACCAACTAAAAGATAC  
AGAGCCTTCATTACAAATATACCTTTTGTGTGAAATGGCAGTCACTTAAAGACCTGGTAAAGAAAAAG  
TTGGTGAGGTAACATACGTGGAGCTCTTAATGGACGCTGAAGGAAAGTCAAGGGGATGTGCTGTTGTTGA  
ATTCAAGATGGAGGAGAGCATGAAAAAGCTGCTGAAGTTCTAAACAAGCATAGTCTGAGTGAAGGCCA  
CTGAAAGTCAAGGAAGATCCTGATGGTGAACATGCAAGGAGAGCAATGCAAAAGGCTGGAAGACTTGGAA  
GCACAGTATTTGTAGCAAATCTGGATTATAAAGTTGGCTGGAAGAACTGAAGGAAGATTTAGTATGGC  
TGGTGTGGTGGTCCGAGCAGACATTCTGGAAGATAAAGATGGGAAAAGTCTGGAATAGGCATTGTGACT  
TTTGAACAGTCCATTGAAGCTGTGCAAGCAATATCTATGTTTAAATGGCCAGTTGCTGTTGATAGACCGA  
TGCACGTCAAGATGGATGAGAGGGCTTTACCAAGGGGAGACTTTTTCTCTCTGAACGCCACAGCAACT  
TCCCCATGGACTTGGTGGTATTGGCATGGGATTAGGACCTGGAGGTGAGCCTATTGATGCCAACCATCTG  
AGCAAAGGCATTGGAATGGGAAACCTAGGACCTGCAGGGATGGGAATGGAAGGCATAGGATTTGGAATAA  
ATAAAATTGGAGGCATGGAAGGACCTTTGGTGGTGGTATGGAAAACATGGGCCGATTTGGATCCGGGAT  
GAACATGGGCCGAATAAATGAAATCCTAAGTAATGCACTGAAGAGAGGAGAGATCATTGCAAAACAGGGA  
GGAGGTGGAGCTGGAGGCAGTGTCCCTGGGATCGAGAGGATGGGCCCTGGCATTGACCGCATTAGCGGTG  
CTGGCATGGAGCGCATGGGCGCAGGCTTAGGCCATGGCATGGATCGAGTGGGCTCTGAGATTGAGCGCAT  
GGGCCTGGTTCATGGACCGCATGGGCTCAGTTGAGCGCATGGGCTCCAGCATTGAGCGCATGGGCCACTA  
GGCCTTGACCACATGGCCTCCAGTATTGAGCGCATGGGCCAGACCATGGAGCGCATTGGTTCTGGCGTGG  
AGCGCATGGGTGCCGGCATGGGCTTCGGCCTGGAGCGCATGGCCGACCCATTGACCGTGTGGGCCAAAC  
CATTGAGCGCATGGGCTCTGGTGTAGAGCGCATGGGTCTGCCATTGAACGCATGGGCCTAAGCATGGAT  
CGGATGGTGCCACAGGCATGGGGCCAGCCTGGAGCGCATGGGTCTGTGATGGATCGGATGGCCACCG  
GCCTGGAGCGCATGGGCGCAACAACCTGGAGCGCATGGGCTGGAGCGTATGGGAGCCAACAGTCTTGA  
GCGCATGGGCTGGAGCGAATGGGCGCAACAGCCTGGAACGTATGGGCCCTGCCATGGGCCAGCATTG  
GGCGCTGGTATTGAGCGAATGGGCTGGCCATGGGTGGAGCCGGAGGTGCTAGCTTTGACCGAGCCATTG  
AGATGGAGCGGGCAACTTTGGAGGAAGCTTCGCAGGTTCTTTGGCGGAGCTGGAGGCCATGCACCTGG  
AGTAGCCAGGAAGGCCTGCCAGATATTTGTGAGAAATCTCCCATTTGATTTTACATGGAAGATGCTAAAG  
GACAAGTTCAATGAATGTGGCCACGTGCTGTACGCCGACATCAAGATGGAGAACGGAAAGTCCAAGGGGT  
GCGGTGTGGTTAAGTTTGTAGTCTCCAGAGGTGGCTGAGAGAGCCTGCCGGATGATGAATGGCATGAAGCT  
GAGTGGCCGAGAGATTGATGTTCAATTGATAGAAATGCT

ACGCGTACGCGGCCGCTCGAG - GFP Tag - GTTTAA

Protein Sequence: >MG218749 representing NM\_001109913  
 Red=Cloning site Green=Tags(s)

MAAGVEAAAEVAATEPKMEEESGAPCVPSGNGAPGPKGEERPTQNEKRKEKNIKRGGNRFEPYSNPTKRY  
 RAFITNIPFDVKWQSLKDLVKEKVGVEVTVYVLLMDAEGKSRGCAVVEFKMEESMKKAAEVLNKHSLSGRP  
 LKVKEDPDGEHARRAMQKAGRLGSTVFVANLDYKVGWKKLKEVFSMAGVVVRADILEDKDGKSRGIGIVT  
 FEQSIEAVQAISMFNQQLLFDPRMHVKMDERALPKGDFPPERPQQLPHGLGGIGMGLPGGGQPIDANHL  
 SKGIGMGNLGPAGMMEGIGFGINKIGGMEGPFGGGMENMGRFGSGMNMGRINEILSNALKRGEIIAKQG  
 GGGAGGSVPGIERMGPIDRISGAGMERMAGLGHGMDRVGSEIERMGLVMDRMGSVERMGSSIERMGPL  
 GLDHMASSIERMGQTMERIGSGVERMGAGMGFLERMAAPIDRVGQTIERMGSVERMGPAIERMGLSMD  
 RMVPTGMGASLERMGPVMDRMTGLERMGANNLERMGLERMGANSLERMGLERMGANSLERMGPAMPAL  
 GAGIERMGLAMGGAGGASFDRAIEMERGNFGGSFAGSFGGAGGHAPGVARKACQIFVRNLPDFDFTWKMLK  
 DKFNECGHVLADIKMENGKSKGCGVVKFESPEVAERACRMMNGMKLSGREIDVRIDRNA

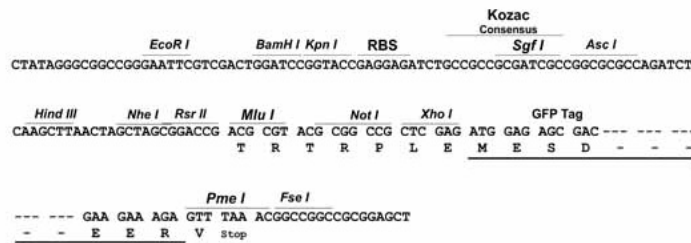
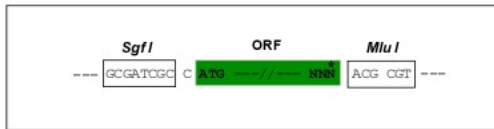
TRTRPLE - GFP Tag - V

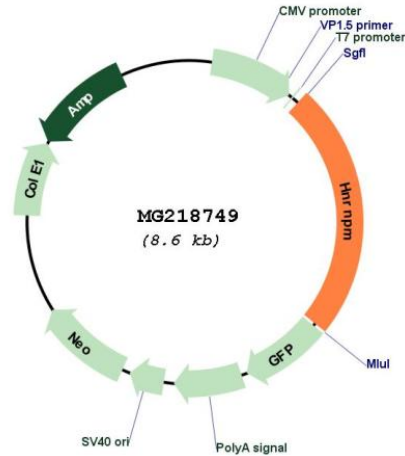
Restriction Sites:

Sgfl-MluI

Cloning Scheme:

Cloning sites used for ORF Shuttling:



**Plasmid Map:**


**ACCN:** NM\_001109913

**ORF Size:** 2070 bp

**OTI Disclaimer:** The molecular sequence of this clone aligns with the gene accession number as a point of reference only. However, individual transcript sequences of the same gene can differ through naturally occurring variations (e.g. polymorphisms), each with its own valid existence. This clone is substantially in agreement with the reference, but a complete review of all prevailing variants is recommended prior to use. [More info](#)

**OTI Annotation:** This clone was engineered to express the complete ORF with an expression tag. Expression varies depending on the nature of the gene.

**Components:** The ORF clone is ion-exchange column purified and shipped in a 2D barcoded Matrix tube containing 10ug of transfection-ready, dried plasmid DNA (reconstitute with 100 ul of water).

**Reconstitution Method:**

1. Centrifuge at 5,000xg for 5min.
2. Carefully open the tube and add 100ul of sterile water to dissolve the DNA.
3. Close the tube and incubate for 10 minutes at room temperature.
4. Briefly vortex the tube and then do a quick spin (less than 5000xg) to concentrate the liquid at the bottom.
5. Store the suspended plasmid at -20°C. The DNA is stable for at least one year from date of shipping when stored at -20°C.

**RefSeq:** [NM\\_001109913.1](#), [NP\\_001103383.1](#)

**RefSeq Size:** 2415 bp

RefSeq ORF: 2073 bp

Locus ID: 76936

UniProt ID: [Q9D0E1](#)

Cytogenetics: 17 B1

**Gene Summary:** Pre-mRNA binding protein in vivo, binds avidly to poly(G) and poly(U) RNA homopolymers in vitro. Involved in splicing. Acts as a receptor for carcinoembryonic antigen in Kupffer cells, may initiate a series of signaling events leading to tyrosine phosphorylation of proteins and induction of IL-1 alpha, IL-6, IL-10 and tumor necrosis factor alpha cytokines (By similarity). [UniProtKB/Swiss-Prot Function]