

Product datasheet for **MG218706**

U2surp (NM_001114977) Mouse Tagged ORF Clone

Product data:

Product Type: Expression Plasmids
Product Name: U2surp (NM_001114977) Mouse Tagged ORF Clone
Tag: TurboGFP
Symbol: U2surp
Synonyms: 2610101N10Rik; AU023006; Sr140
Mammalian Cell Selection: Neomycin
Vector: pCMV6-AC-GFP (PS100010)
E. coli Selection: Ampicillin (100 ug/mL)
ORF Nucleotide Sequence: >MG218706 representing NM_001114977
Red=Cloning site Blue=ORF Green=Tags(s)

TTTTGTAATACGACTCACTATAGGGCGGCCGGAATTCGTCGACTGGATCCGGTACCGAGGAGATCTGCC
GCC**CGATCGCC**

ATGGCCGACAAAACGCCAGGCGGATCTCAGAAGGCCAGTTCAAAGAACCGATCATCAGATGTTTCATTCAT
CTGGATCTTCAGATGCACATATGGATGCATCTGGACCCTCAGATAGTGATATGCCAAGTCGAACACGACC
TAAAAGCCCAAGAAAACACAATTATAGGAATGAGAGTTCGCCGAAAGCCTTTGCGATTCTCCTCATCAG
AATCTCTCAAGACCTCTTCTAGAAAACAAGCTTAAAGCATTGAGTATTGAAAAATGAGCACAGCAAAGC
GAACCCTAAGTAAGAAGGAACAAGAGGAACTGAAGAAAAAGGAGGATGAGAAGGCAGCGCCGAAATTTA
TGAGGAATTTCTTGTCTTTTGAAGGAAGTATGGTAATAAAGTGAAAACGTTTGTTCGAGGCGGGTT
GTTAATGCAGCTAAAGATGAACATGAAACAGATGAAAAAGAGGTAAAATCTATAAAACCTCTTCAAGT
TTGCGATCAAAAAATCCTCCAATCAGTCATCCAATGAAAGGCCGCCATCTCTTCTTGTGATAGAGAC
GAAAAACCCCACTGAAAAAGGGGAGAAGGAAAAAGCAATTTGGAACCTTTCAAAGAAGAA
CTAAAACAATTCAGGAAGAAGTGTGAGAGACATAAAACAAGGCAGGTTAAGTCGGTTTGAGCCTC
CTCAGTCAGACTCTGATGGTCAGCGACGTTCTATGGATGTGCCTCAAGAAGAAATAGATCGTCTGGTGT
TCTTGATGATTATGCACCTGGCTCACATGATGTAGGAGATCCCAGCACTACAAATTTATACCTTGAAAC
ATTAATCCACAGATGAATGAAGAAATGCTGTGCCAAGAATTTGGAAGATTTGGACCATTAGCTAGTAA
AAATTATGTGGCCTAGAAGTGAAGAAAGAGCACGAGAAAGAACTGTGGCTTTGTGGCTTTTATGAA
CAGAAGAGATGCTGAAAGAGCTCTAAAGAAGCTTAAACGAAAAATGATTATGCTTTTGAATGAAGTTA
GGTTGGGGTAAAGCTGTGCCTATTCCTCCACATCCAATATACATTCGCTTCTATGATGGAACACACGC
TCCCCCACCTCCATCCGACTGCCTTTAATGCGCAGCCTAGAGAGCGATTAACCAACCCCAATGCTCC
CATGTTACCACCCTAAAACAAGGAGGATTTGAGAAGACTCTGTGCAAGCCATAGTCAAAGTGGTT
ATCCCAACAGAAAGGAATTTACTCGCCCTGATACCCGAATGATAGAATTTGTTGACGTGAAGGCCAA
TGTTTGAAGCTATGATTATGAACAGAGAAATCAACAATCTATGTTGAGGTTCTATTTGAAACCAGAC
ACCAGCCCATGTTTACTACAGGTGGAAGCTTTATTCTATTCTGCAGGAGATTCTCAACGAAATGGCGG



[View online >](#)

ACAGAAGATTTTCGAATGTTCAAAAATGGATCTTTTTGGAGGCCACCACCTTTAAATCCATACCTTCATG
 GGATGTCAGAGGACAGAGACAGAAGCGTTTGTAGAAGAACCTAGTAAGAAGGGAGCACTCAAGGAAGA
 ACAGCGGGATAAGTTAGAAGAAATCTTGCAGGATTAACCTCAAGGAAAAATGATTTGGAGATGCCATG
 GTTTTCTGTCTTAATAATGCTGAAGCTGCTGAAGAAATAGTGGATTGCATTACTGAGTCGCTGCCATCT
 TAAAGACACCTCTCCCAAGAAGATTGCCAGATTATATTTGGTTTCTGATGTTTTATACTACTCTCAGC
 CAAAGTTGCCAATGCTTCATATTACAGGAAATTTTTGAAACAAAGCTATGCCAGATTTTTCAGACCTC
 AATGCTACTTATCGTACAATTCAGGCCATTTACAATCTGAAAACCTTAAAGCAACGGGTAATGACCTGCT
 TCAGAGCATGGGAAGATTGGCAATTTATCCAGAACCATTTTTGATCAAACCTCAGAATATTTCTTAGG
 ACTTGTAAATATCATTGAAGAAAAGGAAACAGAGGATGTGCCGGATGATCTTGACGGTGCTCCCATCGAG
 GAGGAGCTTGACGGGGCCCTCTGGAGGATGTGGATGGGATTCCCATCGATGCCACTCCCATCGATGACC
 TGGATGGGGTCCCTATAAAGAGTCTTGATGATGATCTGGATGGAGTGCCTTTGGATGCAACTGAAGACTC
 AAAGAAGAATGAACCCATATTTAAAGTTGCCCATCAAAATGGGAGGCTGTAGATGAATCTGAATTGGAA
 GCACAAGCGGTAACGACTTCTAAGTGGGAGTTATTTGACCAGCATGAAGAGTCAGAAGAAGAGGAAAACC
 AAAATCAGGAAGAAGAGAGTGAAGATGAAGAAGACACTCAGAGCTCCAAGTCTGAAGAGCATCATTTGTA
 CTCTAACCCAGTCAGAGAAGAGGCGACTGAGTCTAAGTCTCTAAGTACTCCGAAATGAGTGAAGAAAAG
 CGAGCTAAGCTTCGTGAAATTGAGCTAAAAGTTATGAAGTTTCAAGATGAATTGGAAATCTGGAAAGAGAC
 CTAACAAAACAGGCCAAAGCTTCCAGGAACAAGTAGAGCACTACAGGGATAAACTGCTGCAGCGGGAGAA
 GGAAAAAGAAATTAGAAAGAGAACGAGAAAGAGACAAAAAGATAAAGAAAAATTGGAATCTCGATCCAAA
 GACAAGAAGGAAAAGGATGAATGTACTCCAACAAGAAAAGAAAGGAGAGACGACATAGTACCTCCCCCA
 GCCCTTCTCGAAGTAGCAGTGGTCGGCGTGTGAAATCCCCATCACCCAAATCAGAGCGCTCTGAACGGTC
 AGAAAGGTCTCACAAGAAAGTTCTCGGTCCAGATCCTCTCACAAGACTCTCTAGAGACGCTAGCAAA
 AAAGCCAAAAGGTGCGCGTCTGGTTCAAGGACACCTAAAAGGTCTAGGCGCTCTCGCTCTAGGTCCCCTA
 AGAAATCAGGGAAGAAATCCAGATCTCAGTCCCGGTCTCCACACAGGTCTCATAAAAAGTCAAAGAAAA
 CAAACAC

ACGCGTACGCGGCCGCTCGAG - GFP Tag - GTTTAA

Protein Sequence:

>MG218706 representing NM_001114977
 Red=Cloning site Green=Tags(s)

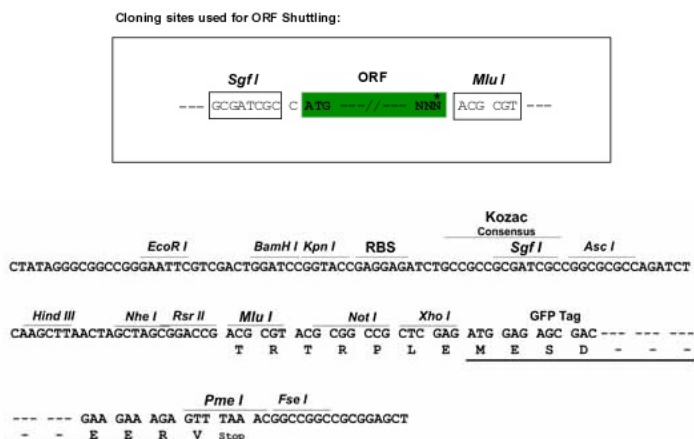
MADKTPGGSQKASSKNRSDVHSSGSSDAHMDASGPSDSMPSRTRPKSPRKHNRYNESSRESLCDSPHQ
 NLSRPLLENKLFKAFSIGKMSTAKRTL SKKEQEELKKKEDKAAAEIYEFLAAFEESDGNKVKTFVRGGV
 VNAAKDEHETDEKRGKIYKPSRFADQKNPPNQSSNERPPSLLV IETKKPPLKKGEKEKKSNLELFKEE
 LKQIQEERDERHKTKGRLSRFEPQSDSDGQRRSMDVPSRRNRSSGVLDYAPGSHDVGDPSTTNLYLGN
 INPQMNEEMLCQEFGRFGPLASVKIMWPRTDEERARERNCGFVAFMNRDAERALKNLNGKMIMSFEMKL
 GWGKAVPIPPHPYIPPSMMEHTLPPPPSGLPFNAQPRERLKNPNAPMLPPPKNKEDFEKTL SQAIVKVV
 IPTERNLLAL IHRMIEFVVREGPMFEAMIMNREINNPMFRFLFENQTPAHVYYRWKLYSILQGDSPTKWR
 TEDFRMFKNGSFWRPPPLNPLYLHGMSEEQETEAFVEEPSKKGALKEEQRDKLEEILRGLTPRKNDIGDAM
 VFCLNNAEAAEEIVDCITESLSILKTPLPKIARLYLVSDVLYNSSAKVANASYRKFETKLCQIFSDL
 NATYRTIQGHLQSENFKQRVMTCFRAWEDWAIYEPFLIKLQNIIFLGLVNIIEEKETEDVPDDL DGAPIE
 EELDGAPELDVDGIPIDATPIDDL DGVPIKSLDDDL DGVPLDATEDSKKNEPIFKVAPSKWEAVDESELE
 AQAVTTSKWELFDQHEESEEEENQNQEESEDEEDTQSSKSEEHLYSNPVREEATESKFSKYSEMSEEK
 RAKLREIELKVMKFQDELESGKRPKPGQSFQEQVEHYRDKLLQREKEKELERERERDKKDKLESRK
 DKKEKDECTPTRKERRRHSTSPSPSRSSGRRVKSPSPKSERSEERSHKESSRSRSSHKDSRPDASK
 KAKRSPSGSRTPKRSRRSRSPKSGKKSRSQSRSPHRSHKSKKNKH

TRTRPLE - GFP Tag - V

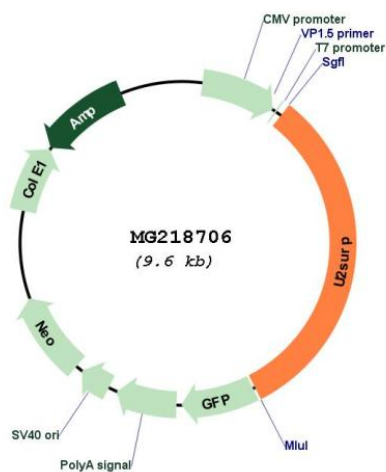
Restriction Sites:

Sgfl-MluI

Cloning Scheme:



Plasmid Map:



ACCN: NM_001114977

ORF Size: 3087 bp

OTI Disclaimer: The molecular sequence of this clone aligns with the gene accession number as a point of reference only. However, individual transcript sequences of the same gene can differ through naturally occurring variations (e.g. polymorphisms), each with its own valid existence. This clone is substantially in agreement with the reference, but a complete review of all prevailing variants is recommended prior to use. [More info](#)

OTI Annotation:	This clone was engineered to express the complete ORF with an expression tag. Expression varies depending on the nature of the gene.
Components:	The ORF clone is ion-exchange column purified and shipped in a 2D barcoded Matrix tube containing 10ug of transfection-ready, dried plasmid DNA (reconstitute with 100 ul of water).
Reconstitution Method:	<ol style="list-style-type: none">1. Centrifuge at 5,000xg for 5min.2. Carefully open the tube and add 100ul of sterile water to dissolve the DNA.3. Close the tube and incubate for 10 minutes at room temperature.4. Briefly vortex the tube and then do a quick spin (less than 5000xg) to concentrate the liquid at the bottom.5. Store the suspended plasmid at -20°C. The DNA is stable for at least one year from date of shipping when stored at -20°C.
RefSeq:	<u>NM_001114977.1</u> , <u>NP_001108449.1</u>
RefSeq Size:	7736 bp
RefSeq ORF:	3090 bp
Locus ID:	67958
UniProt ID:	<u>Q6NV83</u>
Cytogenetics:	9 E3.3