

Product datasheet for **MG218671**

Cntn5 (NM_001170787) Mouse Tagged ORF Clone

Product data:

Product Type: Expression Plasmids
Product Name: Cntn5 (NM_001170787) Mouse Tagged ORF Clone
Tag: TurboGFP
Symbol: Cntn5
Synonyms: 6720426O10Rik; A830025P08Rik; Gm507; NB-2
Mammalian Cell Selection: Neomycin
Vector: pCMV6-AC-GFP (PS100010)
E. coli Selection: Ampicillin (100 ug/mL)
ORF Nucleotide Sequence: >MG218671 representing NM_001170787
 Red=Cloning site Blue=ORF Green=Tags(s)

TTTTGTAATACGACTCACTATAGGGCGCCGGGAATTCGTCGACTGGATCCGGTACCGAGGAGATCTGCC
 GCC**CGATCGCC**

ATGGCTTCCTGTTGGAGACTCATTCTGTTCTGTCTGTCACCAGGTGGCTTTCAGATTACTCTGAAGCTC
 TCTCTGGCCTTTCTACTTCATATGCTGCTTTGCTCAGAATTAAGAAGAGTTCAACCTCACCTTTGGTTC
 CAAGTCCAGACCAGGTTCCAGCAGTCTTCATTAGGTACCATCAGTGTCTCCACCAAGCTGGCGAGGG
 GCAGCTCAGCAGTACCACTCCCCAGGCAACCTTTATCACTCCTCAGATGCCTTCAGACAAGATGAAAGTG
 TGGATTATGGGCCAGTATTTGTGCAAGAACCTGATGATGTCATTTTTCCAAGTATTCTGATGAAAAGAA
 GGTAGCTCTAAATTGTGAAGTTCGTGGCAACCCATCTCCTAGTTACAGATGGCTTCGGAATGGAAGTAA
 ATAGCTCTGGAGAGTGACTATCGCTACAGTCTGATAGACGGCACCTTCATCATCAGCAATCCAAGTGAAC
 TCAGGGATTCTGGCCTGTACCAGTGCTTAGCCACCAACTCTTTTGGAAAGTATTCTTAGTCGAGAAGCCAC
 TCTTCAGTTTGCCTATCTGGGAAATTTAGTGGCCGGACAAGAAGTGCAGTCTCAGTGGCGGAAGGCCAG
 GGGTTGTTCTGATGTGCTCTCCACCACCACATTCTCCAGAGATCATCTAGCTGGGTCTTCAATGAGT
 TCCCTTCCTTTGTGGCAGAGGACAGCCGGCGTTCATATCCCAAGAGACAGGCAACCTTTATATTTCTAA
 AGTGCAAAACATCCGATGTTGGCAGCTACATTTGTCTGGTGAAGAAATGCTGTGACAATGCTCGCTGCTC
 AGTCTCCAACCCACTCAGCTGCGAAATGATGGTGTGATGGGAGAATATGAGCCAAAATTTGAGGTCC
 ATTTTCCTTTCACTGTCACAGTGTCTAAGGGAACAACCTGTGAAGATGGAATGCTTTGCACTTGGCAACCC
 GGTTCCAACAATTAAGTGAAGGTTAACGGTTACATTCTAGTAAGTCCAGACTGCGGAAATCCAGAG
 GCAGTGTGGAGATTCAAAACCTGCAGCTGGATGATGCCGGAATATACGAATGCACAGCTGAAAACCTCCC
 GTGGAAAAAACTCCTTCGTGGACAGCTACAAATATTCACATACCCACACTGGGTACAGAAAATGAATGA
 TACCCAGCTGGACAGTGGGAGTCTCTGCAGTGGGAATGCAAGGCTACTGGAAAGCCAGACCCACATAC
 CGCTGGCTGAAGAATGGAGCACCCCTCTGCCGACAGCAGAGTGGACACAGTGAATGGAATATTGGCGA
 TCCAGAGTGTGAATCAATCAGATGCTGGATGTATCAGTGTGGCTGAGAATAAATATGGAGCTATTTA
 TGGAGTGTGAGCTGAAGATTAGCTTCGCCGCCCTCTTCGAACTGAATCAAGTGAAGAAATCCATA



[View online »](#)

```

ATTGTTACCAAAGACCGGGGAGTGCTCATAGAGTGCGAACCCAGGGATCTCAAAGCCAGCCATCTCCT
GGAGGAAGGGAGACAAGGCAGTGAGGGCGAATAAAGAATAGCTATTCTCCAGACGGAAGCCTGAGGAT
CCTAAACGCTTCTAAAGCAGATGAGGGGAAGTACATTTGCCAAGGGGTGAACATCTTCGGTTCTGCAGAG
ATTATAGCTTCCCTGTCTGTCAAAGAACCACAAGGATAGAGCTTACTCCTAAAAGAACAGAGTTAACTG
TTGGAGAGAGCATTGCTCAACTGTAAGCTATCCACGACGCCAGTTTGGACGTCATTTCTACTGGAC
ATTAAGAAGGACAACCTATTGATTTTGGAAAAGAAGGCGGACATTTTAAAAACATCAGGGCTCAAGCACA
TCTGCAGATTTAATGATCAGGAACATCCTTCTGATGCATGCTGGGAGATATGGCTGCAGGATCAGACCA
CAGCAGACAGTGTGTGAGATGAGGCAGAACTTCTTGTAGGGGTCCCCAGGGCCACCTGGAGTGGTCAT
AGTAGAGGAGATTACAGAAAGCACAGCCACTCTCTCATGGAGTCCAGCAACTGACAAACATAGCCCCATC
TCTTCTTACAACCTTCAGGCTCGCAGCCCTTCTCCCTGGGCTGGCAAACAGTGAAGACAGTCCCAGAAG
TCATCACAGGAGACATGGAGTCAGCAATGGCTGTGGACCTAAACCCCTGGGTAGAATATGAATCCGAGT
GGTGGCCACCAATCCAATTGGGACAGGAGATCCAAGCATTCCATCTCGAATGATCCGCACAAATGAGGCA
GTTCCAAAGACGGCACCCAGCAACGTGAGTGAAGAAGTGAAGAAGGCATGAGTTGGTCATTGCCTGGG
AGCCAGTATCAGAAGAGTTTCAAGATGGGAAGGCTTCGGCTACATAGTGCATTAGACCTAATGGAAC
ACGTGGCTGGAAGGAGAAAATGGTTACGTCTTCGGAGGCGTCAAAGTTCATTTACCGAGATGAAAGTGTC
CCTCCTCTCACACCTTTGAGGTCAAAGTTGGTGTATATAATAATAAAGGTGATGGGCCTTTCAGCCAGA
TCGTAGTCATCTGTTTCAAGTGGAGGAGAACCCACTGCTGCTCCCACTGACGTCACAGCAACCAAGTGTGC
AGTGTGAGAGATTTTGTGTATGGAAACATGTTAAGGAGAGTCTTGAAGACCAGGGGTTTGAAGT
AGTTACTGGAAAGATACCGAGCCAGAAGACTCCGTAGAAACAGTCCGAACCAGAGGGAAATGAGTCATTCCG
TCATGTTGACGGGATTGGAAGGCAACACTCTATCACCTCACAGTCAGGGCTTACAATGGAGCCGGCTA
TGGGCCACCCAGCAGGGAAGCAAGCACCACCACAAGAGGCACCCCTAGGGAGCCACCTGGCAACCTC
CGTGGGAGCAGCAGGGCTCCCAAGTTTCCCTAGGCTGGGAGCCAGTCAAGCCCTAGCCAATGAGTCTG
AAGTCATGGGTTACAAGTTTTTTATAGGCAAGAGGGTACAGCGAAGGTCAAGTTATTGAGACACAGAA
ACCTCAAGCTGTAGTGCCTCTACCTGAGGCTGGAGTCTACATTATTGAAGTTCGAGCGTACAGTGAGGGA
GGAGATGGAACAGCTAGCTCCCAATCAGGTTCTTCAATTCAGTGGGAAAATCACAAGCGCTCAGT
CAACCCTGCACTCTCTCCAAGTGGTCTCAGTAACACTGCTCTGGCTTTGATGCTTCTCCAGTTC
CTGG
    
```

ACGCGTACGCGGCCGCTCGAG - GFP Tag - GTTTAA

Protein Sequence:

>MG218671 representing NM_001170787
 Red=Cloning site Green=Tags(s)

```

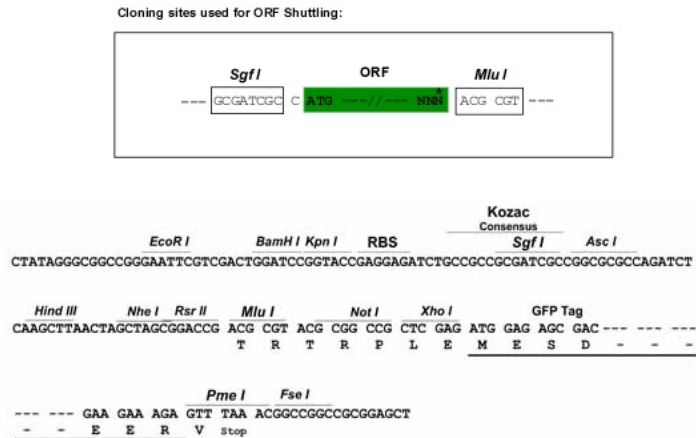
MASCWRLILFLSVTRWLSYSEALSGLSTSYAALLRIKKSSTSPFGSKSRPRFSSPSLGTISVSPPSWRG
AAQYHSPGNLYHSSDAFRQDESVDYGPVFVQEPDDVIFPTDSDEKKVALNCEVRGNPSPSYRWLRNGTE
IALESYRYSIDGTFIISNPSELRDSGLYQCLATNSFGSILSREATLQFAYLGNFSGRTRSAVSVREGQ
GVVLMCSPPPHSPPEIISWVFNFFPSFVAEDSRRFISQETGNLYISKVQTSVDVGSYICLVKNAVTVNARVL
SPPTPLTLRNDGVMGEYEPKIEVHFPTVTAAGTTVKMECFALGNPVPTITWMKVNGYIPSKSRLRKSQ
AVLEIPNLQLDDAGIYECTAENSRGKNSFRGQLQIFTYPHWVQKLNQDQLDQSGSPLQWECKATGKPRPTY
RWLKNAPLLPQSRVDTVNGILAIQSVNQSDAGMYQCLAENKYGAIYASAEKILASPPSFELNQVKKSI
IVTKDRGVLEICEPQGSPPKPAISWRKGDKAVRANKRIAILPDGSLRILNASKADEGKYICQGVNIFGSAE
IIASLSVKEPTRIELTPKRETELTVGESIVLNCKAIHDAASLDVTFYWTLKGQPIDFEKEGGHFENIRAQAS
SADLMIRNILLMHAGRYGCRVQTTADSVSDEAELLVRGPPGPPGVVIEEITESTATLSWSPATDNHSPI
SSYNLQARSFSLGWQTVKTVPEVITGDMESAMAVDLNPWVEYEFVAVATNPIGTGDPISPSRMIRTNEA
VPKTAPSNVSGRSGRRHELVIWEPVSEEFQNGEGFGYIVAFRPNGTGWKEKMTSSEASKFIYRDESV
PPLTPFEVKVGVYNNKGDGPFSSQIVVICSAEGEPTAAPTDTVATSVSVSEIFVVKHVKESLGRPQGFIEI
SYWKDEPEDSVETVTRGNESFVMLTGLENTLYHLTVRAYNGAGYGPSPREASTTTKRHPPREPPGNL
RWEQQGSQVSLGWEPVRPLANESEVMGYKVFYRQEGHSEGOVQIETQKPAVAVPLPEAGVYIEVRAYSEG
GDGTASSQIRVPSYSGGKITSAQSTLHSLSKWSSVTLALLMLPSSSW
    
```

TRTRPLE - GFP Tag - V

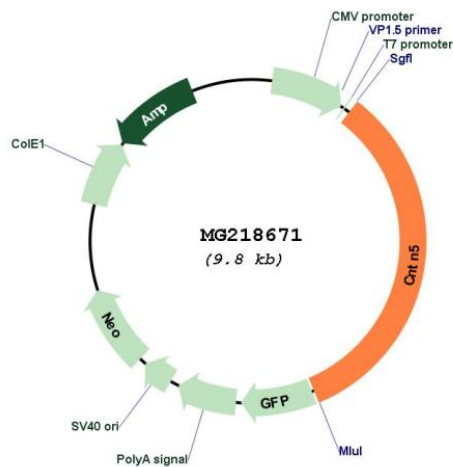
Restriction Sites:

Sgfl-MluI

Cloning Scheme:



Plasmid Map:



ACCN: NM_001170787

ORF Size: 3294 bp

OTI Disclaimer: The molecular sequence of this clone aligns with the gene accession number as a point of reference only. However, individual transcript sequences of the same gene can differ through naturally occurring variations (e.g. polymorphisms), each with its own valid existence. This clone is substantially in agreement with the reference, but a complete review of all prevailing variants is recommended prior to use. [More info](#)

OTI Annotation: This clone was engineered to express the complete ORF with an expression tag. Expression varies depending on the nature of the gene.

Components:	The ORF clone is ion-exchange column purified and shipped in a 2D barcoded Matrix tube containing 10ug of transfection-ready, dried plasmid DNA (reconstitute with 100 ul of water).
Reconstitution Method:	<ol style="list-style-type: none">1. Centrifuge at 5,000xg for 5min.2. Carefully open the tube and add 100ul of sterile water to dissolve the DNA.3. Close the tube and incubate for 10 minutes at room temperature.4. Briefly vortex the tube and then do a quick spin (less than 5000xg) to concentrate the liquid at the bottom.5. Store the suspended plasmid at -20°C. The DNA is stable for at least one year from date of shipping when stored at -20°C.
RefSeq:	<u>NM_001170787.1, NP_001164258.1</u>
RefSeq Size:	4270 bp
RefSeq ORF:	3297 bp
Locus ID:	244682
UniProt ID:	<u>P68500</u>
Cytogenetics:	9 A1
Gene Summary:	Contactins mediate cell surface interactions during nervous system development. Has some neurite outgrowth-promoting activity in the cerebral cortical neurons but not in hippocampal neurons (By similarity). Involved in neuronal activity in the auditory system.[UniProtKB/Swiss-Prot Function]