

Product datasheet for **MG218664**

Cutc (NM_025530) Mouse Tagged ORF Clone

Product data:

Product Type:	Expression Plasmids
Product Name:	Cutc (NM_025530) Mouse Tagged ORF Clone
Tag:	TurboGFP
Symbol:	Cutc
Synonyms:	2310039I18Rik; AI326282; CGI-32
Mammalian Cell Selection:	Neomycin
Vector:	pCMV6-AC-GFP (PS100010)
E. coli Selection:	Ampicillin (100 ug/mL)
ORF Nucleotide Sequence:	>MG218664 representing NM_025530 Red=Cloning site Blue=ORF Green=Tags(s)

TTTTGTAATACGACTCACTATAGGGCGGCCGGAATTCGTCGACTGGATCCGGTACCGAGGAGATCTGCC
GCC**CGATCGCC**

ATGAAGAAAGGGGCTTCTTGCAGCGGAAACAGGCGTGGATATCGTCGGGGAAGGCGGGAGCAGGAAATG
GATTTCTATGGAAGTGTGTGTAGATTCGGTGGAGTCCGCTGTGAATGCAGAAAGAGGAGGTGCTGGTCG
GATTGAAGTGTGCTCTGGTCTACTGGAGGGAGGAACACACCCAGTATGGGTGTTCTTCAAGTAGTAAAA
CAGAGTGTTCAGATCCCAGTGTGTTGTGATGATCCGCCACGCGGAGGCGACTTCTATACTCCGACCGTG
AAGTTGAGGTGATGAAGGCTGACATTCGCCTTGCCAAGCTTTATGGTGCCGATGGTTTGGTGTGGGGC
ATTGACTGAAGATGGACACATTGACAAAGAGCTATGCTTGTCTCTGTAGCTCTTGCCGCCCTCTGCCG
GTCACTTTCCACAGAGCTCTGGAGACCCTCTAACCTTAGGATTTGAACGCGTCTGACCACTGGATGCG
ACAGCTCAGCACTGGAAGGACTGCCTCTAATAAAGCAACTCATAGACCAGGCAAAAGGCAGGATTGTGGT
AATGCCAGGAGGTGGAATAACAGATAAAAACTGCAAAGGATCCTTGAGGGTCCGGTGCTACAGAAATC
CACTGCTCTGCCCGATCTCCAGAGACTCAGGAATGAAGTTTCGAAATTCCTCTGTGCAATGGGAGCTT
CGCTTGCTCATTAGAATATTCTCTAAAGGTAACAGATGTGACAAAAGTAAGGACTTTGAATGCAATTGC
AAAGGACGTCCTAGTT

AGCGGACCGACGCGTACGCGGCCGCTCGAG - GFP Tag - GTTTAA



[View online »](#)

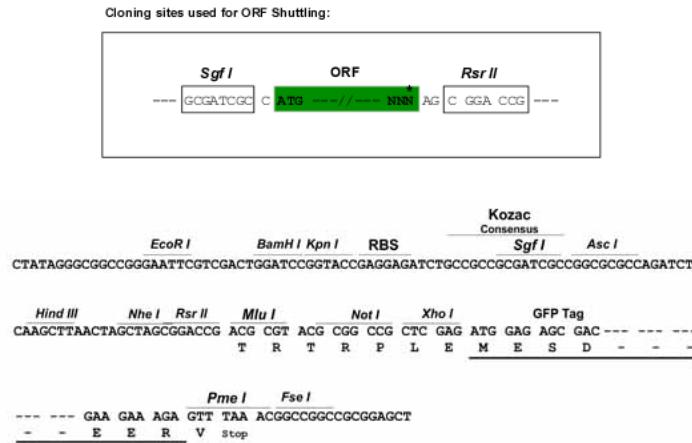
Protein Sequence: >MG218664 representing NM_025530
 Red=Cloning site Green=Tags(s)

MKKGASCERKQAWISSGKAGAGNGFLMEVCVDSVESAVNAERGGAGRIELCSGLLEGTTPSMGVLQVVK
 QSVQIPVFMIRPRGGDFLYSDREVEVMKADIRLAKLYGADGLVFGALTEDGHIDKELCLSLVALCRPLP
 VTFHRALETLLTLGFERVLTSGCDSSALEGLPLIKQLIDQAKGRIVVMPGGGITDKNLQRILEGSGATEF
 HCSARSSRDSGMKFRNSSVAMGASLAHSEYSLKVTDVTKVRTLNAIAKDVLV

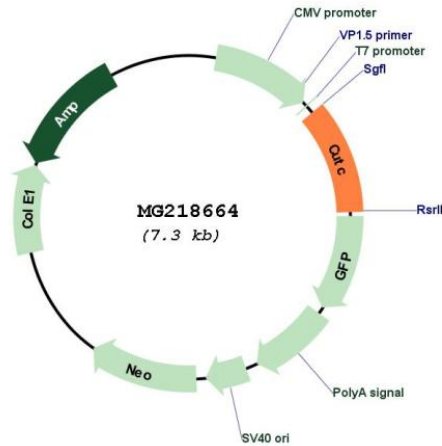
SGPTRRRLE - GFP Tag - V

Restriction Sites: SgfI-RsrII

Cloning Scheme:



Plasmid Map:



ACCN: NM_025530

ORF Size: 786 bp

OTI Disclaimer:	The molecular sequence of this clone aligns with the gene accession number as a point of reference only. However, individual transcript sequences of the same gene can differ through naturally occurring variations (e.g. polymorphisms), each with its own valid existence. This clone is substantially in agreement with the reference, but a complete review of all prevailing variants is recommended prior to use. More info
OTI Annotation:	This clone was engineered to express the complete ORF with an expression tag. Expression varies depending on the nature of the gene.
Components:	The ORF clone is ion-exchange column purified and shipped in a 2D barcoded Matrix tube containing 10ug of transfection-ready, dried plasmid DNA (reconstitute with 100 ul of water).
Reconstitution Method:	<ol style="list-style-type: none">1. Centrifuge at 5,000xg for 5min.2. Carefully open the tube and add 100ul of sterile water to dissolve the DNA.3. Close the tube and incubate for 10 minutes at room temperature.4. Briefly vortex the tube and then do a quick spin (less than 5000xg) to concentrate the liquid at the bottom.5. Store the suspended plasmid at -20°C. The DNA is stable for at least one year from date of shipping when stored at -20°C.
RefSeq:	NM_025530.3 , NP_079806.2
RefSeq Size:	1296 bp
RefSeq ORF:	789 bp
Locus ID:	66388
Cytogenetics:	19 C3
Gene Summary:	May play a role in copper homeostasis. Can bind one Cu(1+) per subunit (By similarity). [UniProtKB/Swiss-Prot Function]