

Product datasheet for **MG218663**

Utp18 (NM_001013375) Mouse Tagged ORF Clone

Product data:

Product Type:	Expression Plasmids
Product Name:	Utp18 (NM_001013375) Mouse Tagged ORF Clone
Tag:	TurboGFP
Symbol:	Utp18
Synonyms:	6230425C22Rik; 6430513M13; Wdr50
Mammalian Cell Selection:	Neomycin
Vector:	pCMV6-AC-GFP (PS100010)
E. coli Selection:	Ampicillin (100 ug/mL)



[View online »](#)

ORF Nucleotide Sequence:

>MG218663 representing NM_001013375
 Red=Cloning site Blue=ORF Green=Tags(s)

TTTTGTAATACGACTCACTATAGGGCGGCCGGAATTCGTCGACTGGATCCGGTACCGAGGAGATCTGCC
 GCC**CGCATCGCC**

ATGCCGCCGAACGCAAGAGCCGGACGAGACGAGACCGGAGACCGGCGCAACGCCGGGGAGGAAAGCCA
 GACCCGGGAGCGGCAGCACGCCCGCAAAGGCCGCCGTTTCATCCCAACGGACACAGCCGGCCGAGCCGAG
 GGCGGCCCTAGCGCGGGATCCGCGGCGCGCGGCAGAGGAGGAGAGCCGGCTCCGGCAGCGGAAC
 CGCCTGACGCTAGAGGACGATAAGCCGGCCGCCGAGCGTTGCCTGGAGCAGCTCGTCTTCGGCGATGTCG
 AGGACGACGAGGACGCGCTGCTGCAGCGCTGCGGAGCTCGCGGGTTCAGCTACATGGAAGCTCAGATGA
 ATCGGAAGTGAAATGAAGCAAAGACATTTTTTCTCAGAAGAAGAAGCAGCCAGTTTGGTGGATGAA
 GATGATGAAGATGAGGAAATAGTTGACATGTGCAACAATCGTTCGAAAGATAAATGAAAAATGCCA
 GTGAAAGTAACTTTCAAAGATAAACTTCAAAGAGACTTAAAGAAGAATTCAGCATGCCATGGGAGG
 AGTACCTGATTGGCAGAAAGCTGGGAGCAAGCGGAGGACATCTTCAGATGATGAAAGTGAAGAGGATGAA
 GATGATTTGTTGCAAAGGACTGGGAATTCATCTCCACATCCACGTCTCTTCCAAGAGGAATCTTGAAGA
 TGAAGAACTGCCGCCTGCCAATGCTGAACGGCAACCACTGCTCGGATCTCGTCAGTGCAGTTCATCC
 TGGTGCACAGGTGGTGTGCTCTGGGTAGATAATGCTATCTCCCTCTTCAGGTTGATGGCAAAACA
 AACCTAAATCCAGAGCATCTATTTGGAGAAGTTCCAATCTTAAAGCTTGTTCAGTGCTAATGGAG
 AAGAGGTTTTAGCCACAAGTATGCACAGCAAGGTTCTTTATGCTATGATATGCTAGCTGGGAAGTTAAT
 TCCTGTACATCAAGTGAGAGGTTTGAAGAGAAAAAGTGAAGCAGTTTGAAGTCTCCCAAGATGGATCC
 TTCTTGTCTATAAGCGGCATTGCAGGTTTTCTCACTTGTCTATCGATGAAGACAAAAGAAGTCAATGTA
 GCATGAAGATTAATGGACGAATTGCGGCATCCACATTCTTTCAGATAGTAAGAGGATATACCTATTC
 TGAGAATGGAGAAGTTTATGTGTGGGATGTGAATTCGAAGGAAGTGCATGAACAGATTTCTTGATGAAGC
 AGTTTATGTGGATTGAGCATTGCTGCATCAAAGAATGGACAGTATGTGGCTTGTGTTCTAAGAGTGGAG
 TGGTAAACATATAACAATCAAGATTCTGCTCCAGCAAACAAACCCAAAGCCAATAAAGCAATAATGAA
 TCTGGTACTGGTGTACTTCTTGGCCTTAAATCCTACCACAGAAATCTTGGCAGTGGCTTCAAGAAAA
 ATGAAAGAAGCTGTCAGATTGGTTCATCTTCTTCTGTACAGTATTTTCTAACTTTCCAGTTTTTAAAA
 AGAGTACTCTTCTCGTGTCAAACCATGGATTTTTCTCCAGAGGTGGATACTTTGCTTAGGGAATGA
 AAAGGCGAGGCCCTGATGTATAGGTTGCATCATTACTCAGACTTC

ACGCGTACGCGGCCGCTCGAG - GFP Tag - GTTTAA

Protein Sequence:

>MG218663 representing NM_001013375
 Red=Cloning site Green=Tags(s)

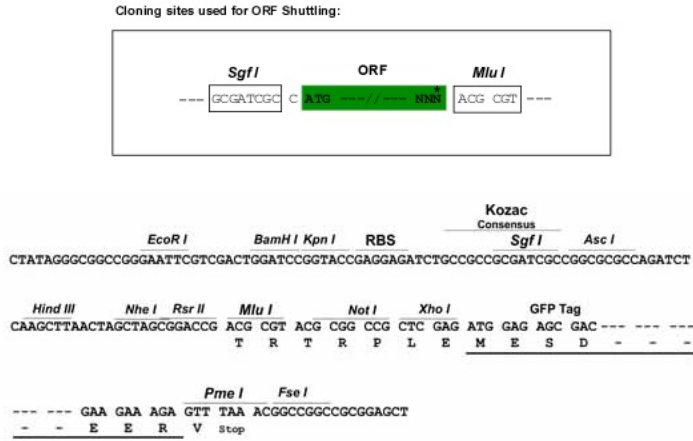
MPPERKSRRRRRAGATPGRKARPGSGSTPAKAARSSQRTQPAEPRAAPSAGSAAAAEEEEESRLRQRN
 RLTLLEDDKPAAERCLEQLVFGDVEDDEDALLQRLRSSRQLHGSSDESEVENEAKDIFSQKKKQPVVWDE
 DDEDEEIVDMSNNRFRKDIMKNASESKLSKDKLQKRLKEEFQHAMGGVPDWAEEAGSKRRTSSDDESEEDE
 DDLLQRTGNFISTSTSLPRGILKMKNCRPANAERPPTARISSVQFHPGAQVVMVSGVDNAISLFLQVDGKT
 NPKIQSIYLEKFPFKACFSANGEEVLATSMHVKVLYVYDMLAGKLIQVHQRGLKEKTVKQFEVSPDGS
 FLLISGIAGFSHLLSMKTKELIGSMKINGRIAASTFSSDSKRIYTYSENGEVVVDVNSRCKMNRFLDEG
 SLCGLSIAASKNGQYVACGSKSGVVNIYNQDSCLQQTNPKPIKAIMNLVTGVTSLAFNPTTEILAVASRK
 MKEAVRLVHLPSTVFSNFPVFKKSTLSRVQTMDFSPRGGYFALGNEKGRALMYRLHHYSDF

TRTRPLE - GFP Tag - V

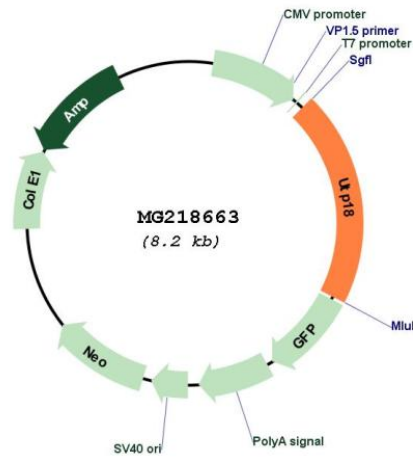
Restriction Sites:

Sgfl-MluI

Cloning Scheme:



Plasmid Map:



ACCN:	NM_001013375
ORF Size:	1656 bp
OTI Disclaimer:	The molecular sequence of this clone aligns with the gene accession number as a point of reference only. However, individual transcript sequences of the same gene can differ through naturally occurring variations (e.g. polymorphisms), each with its own valid existence. This clone is substantially in agreement with the reference, but a complete review of all prevailing variants is recommended prior to use. More info
OTI Annotation:	This clone was engineered to express the complete ORF with an expression tag. Expression varies depending on the nature of the gene.
Components:	The ORF clone is ion-exchange column purified and shipped in a 2D barcoded Matrix tube containing 10ug of transfection-ready, dried plasmid DNA (reconstitute with 100 ul of water).
Reconstitution Method:	<ol style="list-style-type: none">1. Centrifuge at 5,000xg for 5min.2. Carefully open the tube and add 100ul of sterile water to dissolve the DNA.3. Close the tube and incubate for 10 minutes at room temperature.4. Briefly vortex the tube and then do a quick spin (less than 5000xg) to concentrate the liquid at the bottom.5. Store the suspended plasmid at -20°C. The DNA is stable for at least one year from date of shipping when stored at -20°C.
RefSeq:	NM_001013375.1 , NP_001013393.1
RefSeq Size:	2613 bp
RefSeq ORF:	1659 bp
Locus ID:	217109
UniProt ID:	Q5SSI6
Cytogenetics:	11 D
Gene Summary:	Involved in nucleolar processing of pre-18S ribosomal RNA.[UniProtKB/Swiss-Prot Function]