

Product datasheet for **MG218632**

Bcam (NM_020486) Mouse Tagged ORF Clone

Product data:

Product Type:	Expression Plasmids
Product Name:	Bcam (NM_020486) Mouse Tagged ORF Clone
Tag:	TurboGFP
Symbol:	Bcam
Synonyms:	1200005K12Rik; B-CAM; Gplu; Lu
Mammalian Cell Selection:	Neomycin
Vector:	pCMV6-AC-GFP (PS100010)
E. coli Selection:	Ampicillin (100 ug/mL)



[View online »](#)

ORF Nucleotide Sequence:

>MG218632 representing NM_020486
 Red=Cloning site Blue=ORF Green=Tags(s)

TTTTGTAATACGACTCACTATAGGGCGGCCGGAATTCGTCGACTGGATCCGGTACCGAGGAGATCTGCC
 GCC**CGCATCGCC**

ATGGAACCCCTGACGCCCGCAGGGCTGCTGTGGCTCACCTTCTGCTGTCGGGCTACTCAGGTGCC
 AGGCTGAGCTGCACGTGTCCGTGCCCCACGGGTGGAGGTGATGCGAGGGCAGCAAGTCGCCTGGACTG
 CACTCCACGGGAGCACCTGAGCATTACGTGCTGGAATGGTTCCCTCGTTGATGGTACTGGGGCTCGACAC
 CGTCTGGCTTCTGTGGAACACAGGGCTCAGAGTTCCTGGGCACAGTCCACTCTCTGGGCCGCTACCCC
 CATACGAGGTAGACTCTCGTGGGCGCTGGTGATAGCAAAGTCCAGGTGGGCGATGGACGGGACTACGT
 GTGCGTAGTGAAGGCTGGGGCAGCGGTACCTCAGAGGCCACCTCAAGTGTCCGTGTGTTTGAACACCA
 GAGGATACGGAGGTGTCTCCCAAAAGGGACGCTGTCTGTGATGGACCAGTTTGCCAGGAGATTGCCA
 CCTGCAGCAGCAACAACGGAAACCCCGTCCCTCGGATCACATGGTACCGAAACGGGCAGCGTCTGGAAGT
 ACCCATGGAGGTGAACAAAAGGGCTACATAACCATCCGTAAGTGTCCGGGAAGCCTCAGGCTGTACTCC
 CTGACCAGCACCTCTACTCTGAGGCTGCACAAGGATGATCGGGATGCCAACTTCCACTGTCTGCTCACT
 ACGACTTGCCCTCAGGCCAACATGGCCGCTGGACAGCCATACCTTTGCGCTCACCTGCACTATCCAC
 GGAACATGTAGAAATCTGGGTGGGGAGCCCGTCCACCACGGAGGGCTGGGTCCGTGAGGGTGTGCTGTC
 CAGCTGCTCTGCCAGGGCGATGGCAGCCCCAGCCAGAGTATTCTTTTTCCGCCAGCAGGGTACCCAGG
 AGGAACAGCTGAATGTCAACCTCAAGGGAACTTGACCTAGAACGGGTGCATCGGAACAGAGCGGGAT
 CTACGGCTGCAGAGTGGAGGATTACGATGCCGACGAGGAAGTCAACTTGTCAAGAAGCTAAAGTGCAC
 GTGGCTACCTGGATCCATTGGAGCTGAGCGTGCCTGAGGAGCTTTCGTATTCTGAACAGCAGCAGCA
 CGTGGTGAAGTCTCCGCTAGAGGCCTGCCTACTCTACTGCGATGGACCAAGGATTTCTGTGACCTT
 TGCAGACGGCCCCATGCTCTCTCTCCAGTCTGTGACCTTTGACTCAGCTGGCACCTATACCTGTGAGGCG
 TCCACACCCACAGTCCCCCTCTGAGCCGACACAGAGTTTCCAGCTCATCGTCCAGGAGCACCAGAGT
 TAAAACCGAATGAGATAATGCCCAAATCAGGGAATAGCTGGACAGAAGGCGATGAAGTCATGCTGACCTG
 CTCCGCCCGGGCTTCCAGAGCCCAAACCTCACCTGGAGTCAGCGAGGGGATACTCCAGCAGAGCCGCC
 TTTGAGGGTAGAGGCTGGAAGAGCAGCTCGCTGATGGTGAAGTACCAGCGCCCTGAGCCGAGAGGGCG
 TGTCTGTGAAGCGTAAACATCCATGGCAAGAAAGCCATGTCTCCACTTTGGCTCTGTGCCCTCA
 GACTGCCAGGCTGGAGTGGCTGTATGGCTGTAGCTGTCAGCGTCCGCTTTTGTACTCGTGGTCTGCT
 GCTTTCTATTGCATGAGACGCAAAGGGCGCCCTGGCTGCTGCCGGCAGCAGAGAAGGGGGCCGCCAG
 CCAGGGAACCGGAGTTGAGCCACTCTGGGTGAGAGCGCCAGAACACACGGGCCCTTCTCATGGTGGGCC
 CTCGGGAGGAGCAGAGGTGGCAGTGGAGGCTTTGGAGATGAGTGT

ACGCGTACGCGGCCGCTCGAG - GFP Tag - GTTTAA

Protein Sequence:

>MG218632 representing NM_020486
 Red=Cloning site Green=Tags(s)

MEPPDARAGLLWLTFLLSGYSQAELHVSVPVRVEVMRGEQVALDCTPREHPEHYVLEWFLVDGTGARH
 RLASVEPQGSEFLGTVHSLGRVPPYEVDNRGLVIAKVQVGDGRDYVCVKAGAAGTSEATSSVRVFATP
 EDTEVSPNKGTLVMDQFAQEIATCSSNNGNPVPRITWYRNGQRLEVPMEVNQKGYITIRTVREASGLYS
 LTSTLYLRLHKDDRDANFHCAAHYDLP SQHGR LDSHTFRLTLHYPTHEHVEFWGSPSTTEGWVREGDAV
 QLLCQGDGSPSPEYSFFRQQTQEEQLNVNLKGNLT LERVHRNQSGIYGCRVEDYDADEEVQLVKKLKLH
 VAYLDPEL SVPEELFVFLNSSSTVVNCSARGLP TPTVRWTKDSVTLADGPMLSLQSVTFDSAGTYTCEA
 STPTVPLLSRTQSFQLIVQGAPELKPNEIMPKSGNSWTEGDEVMLTCSARGFPEPKL TWSQRGDTPAEP
 FEGRGWKSSSLMVKVTSALSREGVSCASN IHGKKGHVFHF GSVAPQTAQAGVAVMAVAVSVGLLLLVA
 AFYCMRRKGRPGCCRRRAEKGAPPAREPELSHSGSERPEHTGLLMGGPSGGGRGGSGGFGDEC

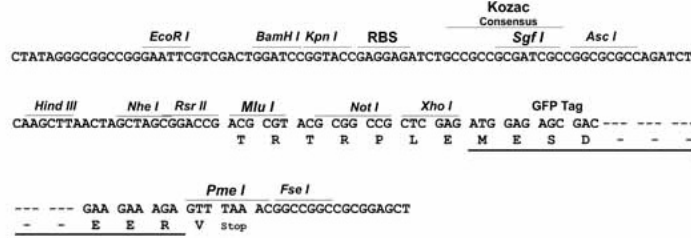
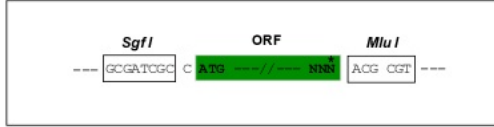
TRTRPLE - GFP Tag - V

Restriction Sites:

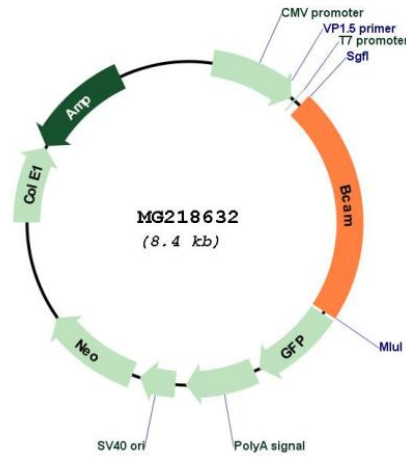
SgfI-MluI

Cloning Scheme:

Cloning sites used for ORF Shutting:



Plasmid Map:



ACCN: NM_020486
 ORF Size: 1866 bp

OTI Disclaimer:	The molecular sequence of this clone aligns with the gene accession number as a point of reference only. However, individual transcript sequences of the same gene can differ through naturally occurring variations (e.g. polymorphisms), each with its own valid existence. This clone is substantially in agreement with the reference, but a complete review of all prevailing variants is recommended prior to use. More info
OTI Annotation:	This clone was engineered to express the complete ORF with an expression tag. Expression varies depending on the nature of the gene.
Components:	The ORF clone is ion-exchange column purified and shipped in a 2D barcoded Matrix tube containing 10ug of transfection-ready, dried plasmid DNA (reconstitute with 100 ul of water).
Reconstitution Method:	<ol style="list-style-type: none">1. Centrifuge at 5,000xg for 5min.2. Carefully open the tube and add 100ul of sterile water to dissolve the DNA.3. Close the tube and incubate for 10 minutes at room temperature.4. Briefly vortex the tube and then do a quick spin (less than 5000xg) to concentrate the liquid at the bottom.5. Store the suspended plasmid at -20°C. The DNA is stable for at least one year from date of shipping when stored at -20°C.
RefSeq:	NM_020486.2 , NP_065232.1
RefSeq Size:	2407 bp
RefSeq ORF:	1869 bp
Locus ID:	57278
UniProt ID:	Q9R069
Cytogenetics:	7 A3
Gene Summary:	Laminin alpha-5 receptor. May mediate intracellular signaling (By similarity). [UniProtKB/Swiss-Prot Function]