

Product datasheet for **MG218628**

Plb1 (NM_030072) Mouse Tagged ORF Clone

Product data:

Product Type:	Expression Plasmids
Product Name:	Plb1 (NM_030072) Mouse Tagged ORF Clone
Tag:	TurboGFP
Symbol:	Plb1
Synonyms:	4632413E21Rik; 4930433E17Rik; 4930539A06Rik; BC033606
Mammalian Cell Selection:	Neomycin
Vector:	pCMV6-AC-GFP (PS100010)
E. coli Selection:	Ampicillin (100 ug/mL)



[View online »](#)

ORF Nucleotide Sequence:

>MG218628 representing NM_030072
 Red=Cloning site Blue=ORF Green=Tags(s)

TTTTGTAATACGACTCACTATAGGGCGGCCGGGAATTCGTGACTGGATCCGGTACCGAGGAGATCTGCC
 GCC**CGGATCGCC**

ATGGAGAAACCTCAAAGCATCAAGAACCAACCACAGGATGTATGCATGGGAATCATGACAGTTCTTTTCAG
 ATATCATCAGACATTTTCAGTCCTTCTGTCTGATGCCACGTGTTCTCCTGGGAAGGGCACTGCAGTCCA
 CACTACTGCTGAAGATTTGTGGATTTCAGCTAAAGAGCTGGTGAGGCGCCTGAAGGACAACCCGCAACTT
 GACTTTGAGAAGGACTGGAACTCATCACTGTGTTCTTCAGTAACACAAGCCAGTGTACCTGTGTCCTT
 CTGCTCAGCAGAAAAGTCACTTGATGAGGCACATGGAGATGCTGTGGGGGTGCTGGATTACCTGCATCA
 TGAGGTCCCCAGAGCATTGTGAATTTGGTGGATCTCTCTGAGGTTTTGGCCATGGATCTTCAGCATCAA
 GAGACTGGCTTCAGCCCTGCACCAGAGGTTTGCAATGCACAGAGACAACGACGCTATCCAAAGCTGTCA
 TGCAGTGGTCTATCAGGAAGCCTGGGAAGATCTTCTGGCCTCTAGCAAGTTCAACAAGCATGAGACCTT
 TGCGGTGGTTTTCCAGCCTTTCTCGATGAAATGAACCACCCTTGAAAAGGTCTCGCCCCAGGATCCC
 ACCCACTCGCCCTCAGGATCTGGAATAGCATGATGGAACCAGTGGGTCAAAGGATGGGCTACTCAATA
 CTGCAGAGAGAAAAGACAATGAAATGTCCCTCTGAGGAGAGTCCCTATCTGTTACCTACAAAAATAGCAA
 CTACCAGGCCAGACGACTGAAACCTATAACAAAGCTTCAGATGAAAGAAGGATCAGAATTCACCTGTCTT
 GACAAGAACCCTCGAATCAATCCCCACAACAGTTTCACAGCTTGCAGCCAGCTGATATCAAGATCATAG
 GAGCATTGGGTGACTCGCTCACGGCAGGCAATGGAGCTGGGGCCAGCCCTTGAATATCTGGATGTCTT
 AACTGAATACCGAGGCCGTCTTGGAGTGTGGGCGGGATGAGACCATCAAACCGTGACCACCTACCC
 AACATTCCTCCGGAAATCAACCCCTCCTTGAAGGGCTTTCTGTTGGCACTGGGAAAGAAAGCACTCCC
 GAGCATCTTCAACCAGGCCGTAGCAGGAGCCAAATCTGATGGCTTAGCTGGCCAGGCCAGAAAGCTGGT
 GGACCTGATGAAGGCAGACAAGACAATAAACTTTCAGGAAGACTGGAAGATAATCACTGTGTTTATAGGA
 GGCAATGACCTCTGTGCTTCTGCAAGTAACTCGACTCGCTTTTCTCCCCAAAACCTTCATAGACAACATCA
 AGAACGCCCTGGACATCTCCATGCAGAGGTTCCACGGCCCTTTGTGAACATGGCAATGGTGTGAGAT
 CACCCCTTGAGAGAATTTCAATGAACCTACAGTCTCATGCCACGGAACATCCTCAGCCGACTGTGT
 CCTTGTGCTCTGGGCTTGGTGATAACTCAGAAGAACTTCCAGCCTCGTTCAAAGGAACAGGGATTATC
 AGAAGAAAAGTGAAGAGCTCATTAAAGCGGACGATATGACACGAGGGATAATTTCACTGTGGTTGTCCA
 GCCCTTATTTGAAATGTGTCCATGCCACGGACCCGGAGGGCGTGCCCGACAAGTCTTTCTTTGCCCT
 GACTGTTTCCACTTAAATGCCAAGACTCATGCCCGCTCAGCCATTGCCCTCTGGAAGAACATGCTGGAAC
 CTGTGGGCCACAAGACAAGACATAATAATTTGAAATCAAGGCCCTATCGTGTGTCGGAACCAGGCCCTC
 GCCATTTCTGAGCACTACCAAGAACAGCAACCTGGGTAATGGAACCTGGATGGTGTGCGAGGAGAGAGCC
 CCTTCTGCCTCACCAACCTCAGTGCATACCCTGAGACCTGCAGACATTCAAGTTGTGGCAGCTCTGG
 GAGACTCTGACTGTGGCAATGGAAATCAGCTCCCAAGAAGGTAACCTCACCGATGTCTCCACACAGTA
 TCGAGGACTGTCTATAGTGTGGTGGGACAAGACCCTGGAGAATGTGACCACTTTGCCAATATCCTA
 CGGAAATTTAATGGAAATCTCACAGGCTACTCAGTAGGAACCGGTGACTCCAGTCCGCAACCGCTTTCC
 TTAACCAGGCTGTCCCTGGGCGAAGGCTGAGAACCCTACAAGCCAAGTCCGACTCTGGTTCAGAAGAT
 GAAGAGTGACAACAGAGTGAACCTCAACCGAGACTGGAAGTCAACCGGTGATGATCGGCGCCAGTGAC
 TTGTGTGACTTCTGCACGGATTGAAATCAATTAATCTGACGCAATTTTTTTGACCATCTCCAAAATGCCT
 TGGACATTCTACATAAGGAGGTACCCAGAGCCCTGGTCAACCTTGTGGACTTCATTAACCCAGTATCAT
 TCGGGAAGTATTCTGAAGAACCAGACAAGTGCCAGTGAATCAGTCCAGG

ACCGTACGCGGCCGCTCGAG - GFP Tag - GTTTAA

Protein Sequence: >MG218628 representing NM_030072
 Red=Cloning site Green=Tags(s)

```

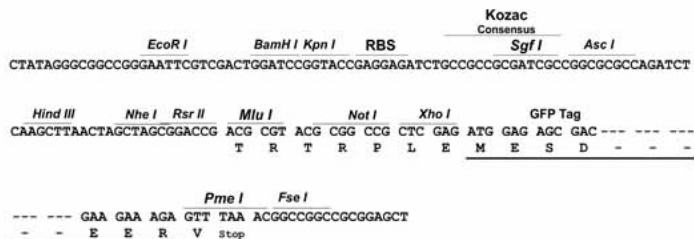
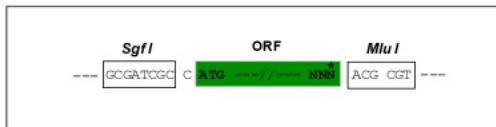
MEKPQSIKNQPQDVCMGIMTVLSDIIRHFSPSVLMPTCSPGKGTAVHTTAEDLWIQAKELVRRLKDNPQL
DFEKDWKLITVFFSNTSQCHLCPAQKSHLMRHMMLWGVLDYLHHEVPRAFVNLVDLSEVLAMDLOHQ
ETGFSPAPEVCKCTETTTLSKAVMQWSYQEAWEDLLASSKFNKHETFAVVFQPFDEIEPPLKRSSPQDP
TTLALRIWNSMMEPVGQKDGLLNTAERKTMKCPSEESPYLFTYKNSNYQARRLKPITKLMKEGSEFTCP
DKNPSNSIPTTVHSLRPADIKIIGALGDSL TAGNGAGASPNILDVLTEYRGLSWSVGGDETIKTVTTLP
NILREFNPSLKGFSVGTGKESTRASFNQAVAGAKSDGLAGQARKLVDLMKADKTINFQEDWKIITVFIG
GNDLCASCSNSTRFSPQNFIDNIKNALDILHAEPRAFVNMMVMMEITPLRELFNEPTVSCPRNILSRLC
PCVLGLGDNSEELSSLVQRNRDYQKKTEELINSGRYDTRDNFTVVVQPLFENVSMRTPPEGVDPKSFAP
DCFHFNAKTHARSAIALWKNMLEPVGHKTRHNNFEIKAPIVCPNQASPFLSTTKNSNLGNGTWMVCEERA
PSASPPTSVHTLRPADIQVVAALGDSL TAGNGISSQEGNLTDVSTQYRGLSYSAGGDKTLENTTLPNIL
RKFNGNLTGYSVGTGDSSANAFNLQAVPGAKAENLTSQVRTL VQKMKSDNRVNFNRDVKVITVMIGASD
LCDFCTDSNHYSANFFDHLQNALDILHKEVPRALVNLVDFINPSIIREVFLKNPDKCPVNQSR
  
```

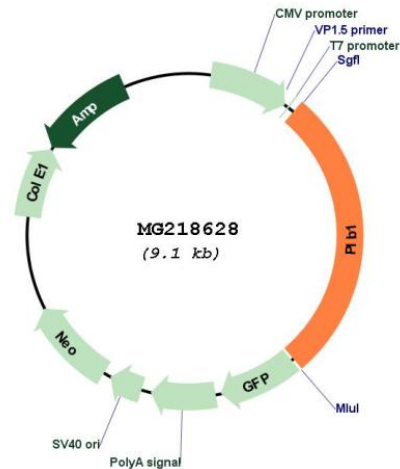
TRTRPLE - GFP Tag - V

Restriction Sites: Sgfl-Mlul

Cloning Scheme:

Cloning sites used for ORF Shutting:



Plasmid Map:


ACCN: NM_030072

ORF Size: 2502 bp

OTI Disclaimer: The molecular sequence of this clone aligns with the gene accession number as a point of reference only. However, individual transcript sequences of the same gene can differ through naturally occurring variations (e.g. polymorphisms), each with its own valid existence. This clone is substantially in agreement with the reference, but a complete review of all prevailing variants is recommended prior to use. [More info](#)

OTI Annotation: This clone was engineered to express the complete ORF with an expression tag. Expression varies depending on the nature of the gene.

Components: The ORF clone is ion-exchange column purified and shipped in a 2D barcoded Matrix tube containing 10ug of transfection-ready, dried plasmid DNA (reconstitute with 100 ul of water).

Reconstitution Method:

1. Centrifuge at 5,000xg for 5min.
2. Carefully open the tube and add 100ul of sterile water to dissolve the DNA.
3. Close the tube and incubate for 10 minutes at room temperature.
4. Briefly vortex the tube and then do a quick spin (less than 5000xg) to concentrate the liquid at the bottom.
5. Store the suspended plasmid at -20°C. The DNA is stable for at least one year from date of shipping when stored at -20°C.

RefSeq: [NM_030072.1](#), [NP_084348.1](#)

RefSeq Size: 3147 bp

RefSeq ORF: 2505 bp

Locus ID: 665270

UniProt ID: [Q3TTY0](#)

Cytogenetics: 5 B1

Gene Summary: Membrane-associated phospholipase. Exhibits a calcium-independent broad substrate specificity including phospholipase A2/lysophospholipase activity. Preferential hydrolysis at the sn-2 position of diacylphospholipids and diacylglycerol, whereas it shows no positional specificity toward triacylglycerol. Exhibits also esterase activity toward p-nitrophenyl. May act on the brush border membrane to facilitate the absorption of digested lipids (By similarity). [UniProtKB/Swiss-Prot Function]