

## Product datasheet for **MG218616**

### Gemin5 (NM\_001166671) Mouse Tagged ORF Clone

#### Product data:

Product Type:	Expression Plasmids
Product Name:	Gemin5 (NM_001166671) Mouse Tagged ORF Clone
Tag:	TurboGFP
Symbol:	Gemin5
Synonyms:	AA407055; AA407208; AI451603; BB194447; C330013N08
Mammalian Cell Selection:	Neomycin
Vector:	pCMV6-AC-GFP (PS100010)
E. coli Selection:	Ampicillin (100 ug/mL)
ORF Nucleotide Sequence:	>MG218616 representing NM_001166671 Red=Cloning site Blue=ORF Green=Tags(s)

TTTTGTAATACGACTCACTATAGGGCGGCCGGAATTCGTCGACTGGATCCGGTACCGAGGAGATCTGCC  
GCC**CGATCGCC**

ATGAAGCCGGAGCCGGGACGCTGCCGCCGTCCCCAACTGGTACTGCTCAGCTGCAGCGACGCGGCGC  
CCGGAGGCATCTTTGGCTTCGCTGCGCGGACCTCCGTCTTCTCGTCCGCGTGGTCCGGTCCGGGCGC  
GAGCCCAGGGGCGCCCCGTTTCGAGTGGTAGGAGAGTTGGTGGGACACACTGAAAGAGTATCTGGTTTC  
ACTTTTTCTCATCACCTGGACAATAAACCTCTGTGCCACCAGCTCAGACGATGGAAGTGAAGTTT  
GGGATGTAGAGACCAAGACTGTAGTGACAGAACACACTCCATCAGCATACAATATCAGCACTGCATTG  
GTCTCCGACAGTTAAGGACTTAATAGTCTCTGGGGATGAAAAAGGAGTCGTTTTCTGTTACTGGCTTAAC  
AGAAATGACAGCCAGCACCTCTTACAGAGCCAGGACCATATTCGTCTGACGTGTTACCTCATCACG  
AAAATCTAGTAGCCATTGGCTACAAAGATGGCATAGTGGTTATCATTGACATCAGTAAAAAGGGAGAAGT  
TATTCACAGACTTCGAGGCCACGATGATGAGATCCACTCCATAGCCTGGTGTCTCTGTCTGGTGAAGAC  
TGCTTATCCATCAGCCAAGAGGAAAACCGAAGAACCTGACATTCCTCAATGGGAAGCTTATAGCAGAAA  
CCCCATCACAAAAGGCTGCTACTTAGCCACAGGAAGCAAAGATCAGACCATTGGAATCTGGAGCTGTC  
CCGCGGCCGGGGTGAATGGTTTTGAAATTGCCCTTCTGAAGAGAAGAAGTGGGGTGTGGACCAACA  
GTTAAAGAACGGCTTTGGTTGACACTTCATTGGCCTAAGAACAACACAGCTGGTATCCAGTTGTT  
TTGGAGGTGAGCTGCTGCTATGGGACCTCACCCAGTCATGGAGCGGAAGTACAGCTCTTCAGCACCTC  
AGCAGAAGGGCACAATCATTCCAGAATTGTCTTCAATCTGTGTTCTCTGAAGACTGAAGATGGCAAGCAG  
CTGCTACTGTCCACATCCATGGATAGAGATGTAATGTTGGGACATGGCCACCCTGGAGTGTGCTGGA  
CATTGCCCTTCTTGGAGTTTTGCCTACAGCCTGGCCTTTTCTCCTGTGGACGTGGGCTCCCTGGCCAT  
AGGTGTTGGGACGGCATGATCCGGGTGTGGAATACACTCTCCATAAAGAACAACACGACGTGAAAAAC  
TTCTGGCAAGGAGTCAAGTCCAAGGTACAGCGCTATGCTGGCACCAACAAGGAAGGCTGCTTAGCCT  
TCGGGACCGATGACGGAAGTGGGATTGTATGACACCTGCTCCAACAACCTCCACAGATTTCAAGCAC  
GTATCATAAGAAGACCGTGTATAGTGGCTTGGGGCCACCAGTCCCCCATGCACTGGAGGGGAA



[View online »](#)

GGAGACAGGCCTTCCCTCACCTTGTACAGCTGTGGAGGGGAAGGCGTTGTGCTACAGCATAACCCCTGGA  
 AGCTCAGTGGAGAGGCCTTCGACATCAACAACTCGTGAGGGACACCAACTCCATTAGATACAACTGCC  
 CGTGCACACAGAGATCAGCTGAAAGGAGATGGCAAAGTCTGGCTCTTGGGAATGAAGATGGATCAATA  
 GAAATATTCCAAGTCCCCAATTGAGGCTGCTGTGCACCATCCAGCAGCACCACAAGCTTGTGAACGCCA  
 TAGTCTGGCACCATGAGCATGGCAGCCGTCCAGAGCTGAGCTGTCTCCTTGTCTTGGCTCCAACAATGC  
 AGTCATCTACGTGCACAACCTGAAAGCAGTCTAGAAAGCAATCCTGACTCTCCAATAACCATCACAGAA  
 CCTACCGCACCCTCTCGGGGCACACAGCAAGATTACCAGTCTGGCATGGAGCCCAATCATGACGGAA  
 GGCTGGTATCTGCTTGTACGATGGCACAGCTCAGGTGTGGGATGCCCTCCGGGAAGAACCCTTGTCAA  
 TTTCCGAGGACATCGAGGCCGGCTGCTATGTGTGCGTGGTCCCCAGTGGATCCAGAATGCATCTACTCA  
 GGTGCAGATGACTTCTGTGTCTACAGGTGGCTGACTTCCATGCAGGACCATCCCGCCTCCTCAAGGGA  
 AAAATGTATTGAACTAGAGAAAAACGGCTCTCTCAATTTAAGCCAAAGCTTAAAAAGAAGAAAAACC  
 TACCTTGCAGTGCCTGTAAAGCAGGATTCATCCGTTGGCAATGAAGATGAGAGTGTAAAGGAGAACTCT  
 GGACCTGCTGAGAATGGCTTGTCCGACCAGGATGGTGAGGAGGAAGCCAGGAGCCAGAGCTGCCTCCCT  
 CTCCTGTAGTTTGTGTAACCTGTTTCTGTACTGACATTTCTCAGGCTTTGAAAAGTCAAAGTCAAC  
 TGTTAGTAGCAAAGCCACCTCACTGAAAAAGGAGCCACCTAAAGAGAAGCCAGAAGCCTTGTCAAGAAG  
 AGGAAGGCTCGCTCCATGCTCCCTCTGAGCACCAGCTTAGACCACAGGTCCAAAGAGGAGCTCCATCGAG  
 ACTGCTTGGTACTAGCAACTGCAACACACGCCAAAGCAGAACTAAATGAAGATGTGTCTGCCGACCTTGA  
 GGAACGATTCCACTTGGGCCTTTTACAGACAGGGCTACTCTATACAGGATGATGGAAACAGAAGGGAAA  
 GGTCACTTGGAAAGTGGCCACCCGAGCTTTTTACCAGCTCATGCTCTGGAAAGGAGATCTGAAGGGTG  
 TTCTCCAGGCTGCAGCAGAGAGAGGGGAGCTGACAGACAGTCTCGTGGCTGTGGCACCAGTGGCTGGCTA  
 CAGTGTATGGCTGTGGGCTGTGGAAGCCTTTGCCAAGCAGCTGTGTTCCAGGACCAGTACGTCAAGGCT  
 GCCTCTTATCTGCTATCCATCCACAAGTGTACGAAGCTGTGAACTTCTCAAGTCAAACCATCTCTACA  
 GAGAAGCTATTGCAAGTGGCAAGGCTCGCCTGCGCCCTGAGGACCCTGTTCTGAAGAACTATACCTCAG  
 CTGGGGTCCATCCTGGAGAGAGATGGCCACTATGCTATTGCAGCCAAGTGTACTTAGGAGCCACTTCC  
 GCCTATGATGCAGCCAAAGTCTGGCCAGAAAGGAGATGCAGCCTCACTTAGAACAGCTGCAGAGCTGG  
 CTGCCATAGCAGGAGAACATGAGCTGGCTGCTTCCCTGGCTCTTAGATGTGCCAAAGAGCTGCTTCTGGT  
 GAAGAAGTGGGTGGTGCACAAGAAGCATTGGGACTGCATGAAAGCCTGCAGGGCCAGAGACTGGTCTTC  
 TGCCTCCTTGAATTTCTATGCCGGCACCTGGAGGAAAAACAGCCTCTAGAGGTGAGAGGCCCTCTTCCA  
 TTTACCACAGTGGGCCACAGTTCTGAGGGAACCTTGGTGCAGAGAGTAACCGGTGTGTGGCGCAGCGC  
 CTTCAAGTGGACACCCCGGAGCAGTGTACAGCCGCTTACAGAAGCTGCAGGATGTCAAGTACCCATCA  
 GCAACAAGTAACACTCCCTTCAGACAGCTGCTGCTTCATGTCTGCCATGACCTGACCTTGGCAATGCTGA  
 GCCAGCAGGCTGCTGCCTGGGAGGAGGAGTGCCTGCTGCTGTCAGGCTGTGGTTCGGAGCTATACCTC  
 AGGAACTTACCCCTCATGCAGGAAATCTACTAGCCTTTCTCCAGGTGGCTGTGACCCTACGAGAC  
 AAAGTGGGTGACCTCTCTCCTGCCATGGCAGCTTACAAAAGCTTAGAGGCCTTTTGTATTATGGGCAAC  
 TGTATGAAGTCTGGTGGTTCGCTCTGTGGCCCTGGCCCTGAATCAAGCGTCTGGGTGTTGTGAGCTGAAA  
 CACGGTCTCTGATAAACAGAGCAAGCCAGAGGACAGTGCAGGAGTGGGATGGAACAGCCTCCAGGC  
 CCGGGCCCGAGGCTCAGTGCAGAGAGTGTGAGCGTTTGTGAGTGCCTGCAAGGAGCTTTTCTCAGAAGGC  
 ATGCCAGCCTGCAGACCTCCAGAGGACTGTAGCCGAAGTCCAAGAGACACTGGCAGAAAATGATCCGCCA  
 GCACAAAAGAGTCAAGCTGCAAGGCCACAACAATGGTCCCAGCAGAGATGAACCCAGCAGAGATGAA  
 CCCAGCCAGGAAGCAGAGCGGGCTCCTTCTCAGCCTCCGAGCCCAACCAGAGAAGAAAGAAATGCACCAG  
 TGTCTCTCCCTGAATTAACCAGAAGGCTCACAGAGGCAAATGAGAGAATAGCAGAGTTTCCAGAGACTGT  
 AAAGGCCTGGCCCTTCCAGATGTGCTGGAGTGTGTCTCGTCTTGTTCACATTGGGTCCAGTGTCTCT  
 GACGCTGTGGACCCTGAGATGCAGCAACAGGCCAGGAGCTCCTTACAAGTATGGGCACACTCGAGCTT  
 ACAGAAGACTGCCAGAGTCGGCACACG

ACGCGTACGCGGCCGCTCGAG – GFP Tag – GTTTAA

**Protein Sequence:** >MG218616 representing NM\_001166671  
 Red=Cloning site Green=Tags(s)

```

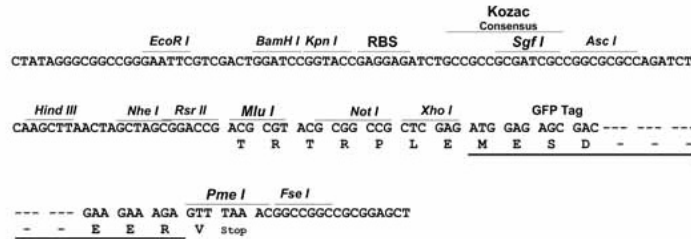
MKPEPRTLPPSPNWCYCSRCSDAAPGGIFGFAARTSVFLVRVGPAGASPGAPPFRVVGELVGHTERVSGF
TFSHHPGQYNLCATSSDDGTVKVVDVETKTVVTEHTLHQHTISALHWSPTVKDLIVSGDEKGVVFCYWLN
RNDSQLFTEPRTIFCLTCSPHHENLVAIGYKDGIVVIIDISKKEVIHRLRGHDDEIHSIAWCPLSGED
CLLSIQEENSEEPPDIPNGKLI AETPITKGCYLATGSKDQTI RIWCSRGRGVMVLKPLFLKRRSGGVDPT
VKERLWLT LHWPKNQPTQLVSSCFGGELLWDLTQSWRRKYTLFSTSAEGHNHSRI VFNLC SLKTEDGKQ
LLLSTSMDRDVKCWDMATLECCWTLPSLGGFAYSLAFSPVDVGS LAIGVGDGMIRVWNTLSIKNNYDVKN
FWQGVKSKVTALCWHPNKEGCLAFGTDDGKVGLYDTC SNKPPQISSTYHKKTVYRLAWGPPVPPMSLGGE
GDRPSLTLYSCGGEGVVLQHNPKLSGEAFDINKLVRDTNSIRYKLPVHTEISWKGDGKVLALGNEDGSI
EIFQVPNLRLCTIQQHKL VNAIVWHHEHGRPEL SCLLASGSNNAVIYVHNLKAVLESNPDSPITITE
PYRTL SGHTAKITSLAWSPHHDGRLVSACYDGT AQVWDALREPLFNFRGHRGRLLCVAWSPVDPECIYS
GADDFCVYRWL TSMQDHSRPPQGGKCI ELEKKRLSQFKPKLKKKKKPTLRLPVKQDSSVGNEDSVKENS
GPAENGLSDQDEEEEAQEP ELPSPVVCVEPVSCD I SSGFEKSKVTVSSKATSLKKEPPKKEPEALLKK
RKARSMLPLSTLSDHRSKEELHRDCLVLATATHAKAELNEDVSADLEERFHLGLFDRATLYRMMETEGK
GHLESGHP E L F H Q L M L W K G D L K G V L Q A A A E R G E L T D S L V A V A P V A G Y S V W L W A V E A F A K Q L C F Q D Q Y V K A
A S Y L L S I H K V Y E A V E L L K S N H L Y R E A I A V A K A R L R P E D P V L K E L Y L S W G S I L E R D G H Y A I A A K C Y L G A T S
A Y D A A K V L A R K G D A A S L R T A A E L A A I A G E H E L A A S L A L R C A Q E L L L V K N W V G A Q E A L G L H E S L Q Q R L V F
C L L E L L C R H L E E K Q P L E V R G P S S I Y H Q W A T G S E G T L V Q R V T G V W R S A F S V D T P E Q C Q A A L Q K L Q D V K Y P S
A T S N T P F R Q L L L H V C H D L T L A M L S Q Q A A W E E A V P A L L Q A V V R S Y T S G N F T L M Q E I Y S A F L P G G C D H L R D
K L G D L S P A M A A Y K S L E A F C I Y G Q L Y E V W W S L C G P G P E S S V W L S A E S T V S D K Q S K P E D S A G A E D M E Q P P G
P G P R L S A E S E R L L S A C K E L F S E R H A S L Q T S Q R T V A E V Q E T L A E M I R Q H Q K S Q L C K A T T N G P S R D E P S R D E
P S Q E A E R A P S Q P P S P T R E E R N A P V S L P E L T R R L T E A N E R I A E F P E T V K A W P F P D V L E C C L V L L H I G S Q C P
D A V D P E M Q Q A Q E L L H K Y G H T R A Y R R H C Q S R H T
  
```

TRTRPLE - GFP Tag - V

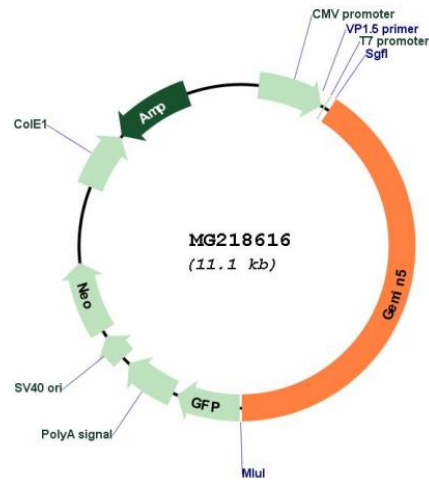
**Restriction Sites:** SgfI-MluI

**Cloning Scheme:**

Cloning sites used for ORF Shutting:



## Plasmid Map:



ACCN: NM\_001166671

ORF Size: 3720 bp

OTI Disclaimer: The molecular sequence of this clone aligns with the gene accession number as a point of reference only. However, individual transcript sequences of the same gene can differ through naturally occurring variations (e.g. polymorphisms), each with its own valid existence. This clone is substantially in agreement with the reference, but a complete review of all prevailing variants is recommended prior to use. [More info](#)

OTI Annotation: This clone was engineered to express the complete ORF with an expression tag. Expression varies depending on the nature of the gene.

Components: The ORF clone is ion-exchange column purified and shipped in a 2D barcoded Matrix tube containing 10ug of transfection-ready, dried plasmid DNA (reconstitute with 100 ul of water).

**Reconstitution Method:**

1. Centrifuge at 5,000xg for 5min.
2. Carefully open the tube and add 100ul of sterile water to dissolve the DNA.
3. Close the tube and incubate for 10 minutes at room temperature.
4. Briefly vortex the tube and then do a quick spin (less than 5000xg) to concentrate the liquid at the bottom.
5. Store the suspended plasmid at -20°C. The DNA is stable for at least one year from date of shipping when stored at -20°C.

**RefSeq:** [NM\\_001166671.1](#), [NP\\_001160143.1](#)

**RefSeq Size:** 6105 bp

**RefSeq ORF:** 3723 bp

**Locus ID:** 216766

**UniProt ID:** [Q8BX17](#)

**Cytogenetics:** 11 B1.3

**Gene Summary:** Required for the assembly of the SMN complex that plays a catalyst role in the assembly of small nuclear ribonucleoproteins (snRNPs), the building blocks of the spliceosome. Thereby, plays an important role in the splicing of cellular pre-mRNAs. Most spliceosomal snRNPs contain a common set of Sm proteins SNRPB, SNRPD1, SNRPD2, SNRPD3, SNRPE, SNRPF and SNRPG that assemble in a heptameric protein ring on the Sm site of the small nuclear RNA to form the core snRNP. In the cytosol, the Sm proteins SNRPD1, SNRPD2, SNRPE, SNRPF and SNRPG are trapped in an inactive 6S pICln-Sm complex by the chaperone CLNS1A that controls the assembly of the core snRNP. Dissociation by the SMN complex of CLNS1A from the trapped Sm proteins and their transfer to an SMN-Sm complex triggers the assembly of core snRNPs and their transport to the nucleus. GEMIN5 acts as the snRNA-binding protein of the SMN complex. Binds to the 7-methylguanosine cap of RNA molecules (By similarity). Binds to the 3' UTR of SMN1 mRNA and regulates its translation; does not affect mRNA stability (PubMed:25911097). May play a role in the regulation of protein synthesis via its interaction with ribosomes (By similarity).[UniProtKB/Swiss-Prot Function]