

Product datasheet for **MG218604**

Eml1 (NM_001043336) Mouse Tagged ORF Clone

Product data:

Product Type:	Expression Plasmids
Product Name:	Eml1 (NM_001043336) Mouse Tagged ORF Clone
Tag:	TurboGFP
Symbol:	Eml1
Synonyms:	1110008N23Rik; A930030P13Rik; AA171013; AI847476; AI853955; ELP79; EMAP; EMAPL; heco
Mammalian Cell Selection:	Neomycin
Vector:	pCMV6-AC-GFP (PS100010)
E. coli Selection:	Ampicillin (100 ug/mL)



[View online »](#)

ORF Nucleotide Sequence:

>MG218604 representing NM_001043336
 Red=Cloning site Blue=ORF Green=Tags(s)

TTTTGTAATACGACTCACTATAGGGCGGCCGGAATTCGTCGACTGGATCCGGTACCGAGGAGATCTGCC
 GCC**CGCATCGCC**

ATGGAGGTGTGACACCGCATCGCTCTCTGGAGCAGCGCTCCAGATGCAGGAGGATGACATTCAACTGC
 TCAAGTCAGCGCTGGCCGACGTGGTTCGGAGGCTGAACATCACGGAGGAGCAACAGGCTGTGCTCAACAG
 GAAAGGACCTACCAAAGCGAGGCCACTGGGGCAGACCCTGCCATTGAGAACCACCGTCAACAATGGCACC
 GTGTTACCAAAGAAACCCAGTGCCTCCCTCCCGCACCCTCCGGGGCCAGGAAAGAAGTAGTTGTGCCGG
 TAACCAAAGCATCAATAGGACCAGCTCTCCGAAAGAGTGTCTCCAGGTGGCCGGAGGGAGAGCTCTGG
 GGACTCCAAAGGAAGCCGGAACCGCACGGGCTCAACCAGTAGCTCCTCCAGCGGCAAGAAGAAGCAGTGAG
 AGCAAACCCAAGGAGCCCGCATTAGTCCAGAAGAAGGATATGAAAAATGTTTCTCGAGGCCGTCGG
 TCACCATGTACATGCCAAAGACCAAGTGGATTCTGACAGTTTGAAGCAAAAGCTGAGTTACCAACGAA
 GCGGCTGAAACTGGAGTGGGTCTACGGGTACCGGGGCGAGACTGTCGCAATAACTTGTACTTGTCCCG
 ACCGGGGAGACCGTGTACTTCATTGCGTCTGTCGTGGTGTTTACAATGTGGAGGAGCAGCTGCAGAGGC
 ATTACGCGGGCCACAACGATGACGTCAAGTGCCTAGCGGTCCATCCTGACAGGATCACCATAGCAACGGG
 ACAAGTGGCGGGCACATCTAAGGATGGAAGCAACTGCCACCACATGTGCGCATCTGGGACTCTGTGACA
 CTGAACACTCTGCATGTCATTGGAATAGGCTTTTTGACCGGGCTGTACCTGCATCGCATTCTCAAAGT
 CTAACGGAGGAGGCCATCTCTGTGCTGTGGATGATTCCAACGATCACGTGCTGTCCGTGTGGGATTGGCA
 GAAAGAAGAGAGACTGGCCGACGTGAAGTGTTCGAACGAAGCGGTATTTGCGGGGACTTCCACCCACA
 GACACCAATATCATAGTACCTGCGGGAAGTACATCTCTACTTTTGGACCCTAGAAGGAAATTCCTTA
 ACAAGAAGCAAGGGTTGTTTGAAACAAGAGAAGCCAAAGTTTGTCTCTGCGTGACGTTTTCTGAAAA
 TGGCGACACCATTACTGGAGATTCAAGCGCAACATCTTGGTGTGGGGAAAGGTACAAATCGGATAAGC
 TATGCAGTTCAAGGGGCCACGAGGGCGGCATTTTTGCATTTGTATGCTGAGAGACGGGACGCTGGTGT
 CCGGAGGAGGGAAGGACCGCGACTCATTTCTGGAACGGAAACTATCAAAACTTCACAAAGCAGAGAT
 TCCTGAGCAGTTTGGCCCAATACGGACAGTAGCCGAAGGGAAGGGCAACGTCATCTTGATAGGCACTACT
 AGAAACTTTGTCCTGCAAGGCACCTTGTGAGGGACTTCAACCCATCACTCAGGGCCACACCGATGAGC
 TCTGGGGCTAGCCATCCATGCCTCAAGCCTCAGTTCCTGACTTGTGGACATGACAAACATGCCACTCT
 CTGGGACGCTGTCGGTACCGGCCAGTCTGGGACAAAATCATAGAGGATCCAGCTCAGTCTCTGGTTTT
 CATCCTTCGGGTCTGTGGTTGCAGTGGGACACTGACTGGGAGTGGTTTGTGTTTGACACGGAGACAA
 AGGACTTGGTCACCGTCCACACGGATGGGAATGAGCAGCTGTCCGTGATGCGGTATTCTCCAGATGGGAA
 CTTCTTAGCAATCGGCTCCCATGACAATGCATCTACATATATGGAGTTACCGACAATGGAAGGAAGTAC
 ACACGAGTTGGCAAGTGCTCCTGCCATTCCAGCTTCATCACCCACTTGGACTGGTCCGTGAACTCACAAT
 TCCTGGTGTCAAATTCGGGGACTACGAGATCCTCTACTGGGTTCCGTCTGCCTGTAAGCAAGTCGTGAG
 TGTGAAACCACAAGGGACATCGAGTGGGCCACCTATACCTGCACCTTGGGATCCACGCTTTGGAGTG
 TGGCCGGAGGGCTCCGATGGGACAGACATCAACGCCGTCTGCCGGCTCACGAGAGAAAGCTCTTGCA
 CAGGCGATGACTTCGGCAAAGTGCACCTTCTCATACCCGTGCTCACAGTTCGGGGCTCCAAGCCACAT
 CTACAGTGGACACAGCAGCCACGTCACCAACGTGGACTTCTCTGTGAAGACAGCCACCTTATCTCCAGC
 GGTGGGAAAGACACAAGCATCATGCAGTGGCGAGTCATT

ACGCGTACGCGGCCGCTCGAG - GFP Tag - GTTTAA

Protein Sequence: >MG218604 representing NM_001043336
 Red=Cloning site Green=Tags(s)

```

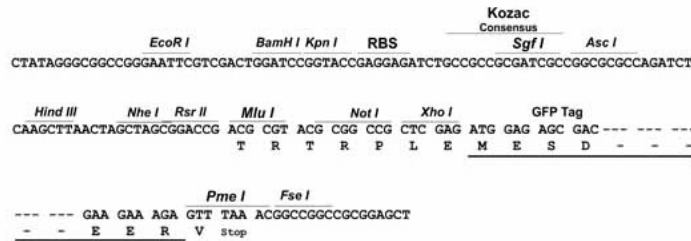
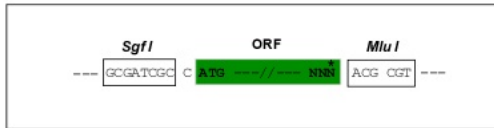
MEVSDRIASLEQRVQMEDDIQLLKSALADVRRRLNITEEQAVLNRKGPTKARPLGQTLPLRTTVNNGT
VLPKKPSASLPAPSGARKEVVVPVTKSINRTSSSERVSPGGRRESSGDSKGSRRNTGSTSSSSSGKKNSE
SKPKPEAFSPEEGYVKMFLRGRPVMTMYPKDQVDSYSLEAKAELPTKRLKLEWVYGYRGRDCRNNLYLLP
TGETVYFIASVVVLYNVEEQQRHYAGHNDDVKCLAVHPDRITIAATGQVAGTSKDGKQLPPHVRIWDSVT
LNTLHVIGIGFFDRAVTCIAFSKSNGGGHLCAVDDSDNHVLSVWDWQKEERLADVKCSNEAVFAADFHPT
DTNIIIVTCGKSHLYFWTLEGNLNKKQGLFEKQEKPFLVLCVTFSENGDTITGDSSGNILVWGKGTNRIS
YAVQGAHEGGIFALCMLRDGTLVSGGGKDRRLISWNGNYQLHKAEIPEQFGPIRTVAEGKGNVILIGTT
RNFVLQGTLSGDFTPITQGHDELWGLAIHASKPQFLTCGHDKHATLWDVAGHRPVWDKIIEDPAQSSGF
HPSGSVVAVGTLTGRWVFVDTETKDLVTVHTDGNEQLSVMRYSVDGNFLAIGSHDNCIYIYGVTDNGRKY
TRVGKCSCHSSFITHLDSVNSQFLVSNSGDYEILYWVPSACKQVSVETTRDIEWATYCTGLGFHVFVG
WPEGSDGTDINAVCRAHERKLLCTGDDFGKVHLFSYPCSQFRAPSHIYSGHSSHTNVDFLCEDSLHIST
GGKDTSIMQWRVI
  
```

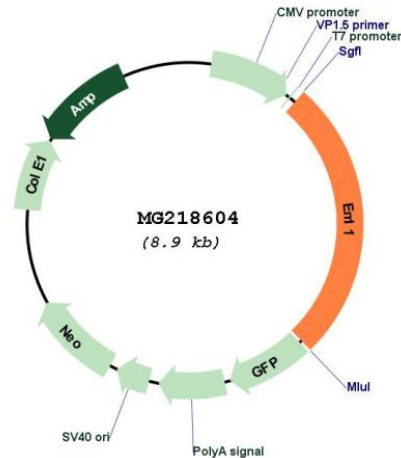
TRTRPLE - GFP Tag - V

Restriction Sites: SgfI-MluI

Cloning Scheme:

Cloning sites used for ORF Shuttling:



Plasmid Map:


ACCN: NM_001043336

ORF Size: 2349 bp

OTI Disclaimer: The molecular sequence of this clone aligns with the gene accession number as a point of reference only. However, individual transcript sequences of the same gene can differ through naturally occurring variations (e.g. polymorphisms), each with its own valid existence. This clone is substantially in agreement with the reference, but a complete review of all prevailing variants is recommended prior to use. [More info](#)

OTI Annotation: This clone was engineered to express the complete ORF with an expression tag. Expression varies depending on the nature of the gene.

Components: The ORF clone is ion-exchange column purified and shipped in a 2D barcoded Matrix tube containing 10ug of transfection-ready, dried plasmid DNA (reconstitute with 100 ul of water).

Reconstitution Method:

1. Centrifuge at 5,000xg for 5min.
2. Carefully open the tube and add 100ul of sterile water to dissolve the DNA.
3. Close the tube and incubate for 10 minutes at room temperature.
4. Briefly vortex the tube and then do a quick spin (less than 5000xg) to concentrate the liquid at the bottom.
5. Store the suspended plasmid at -20°C. The DNA is stable for at least one year from date of shipping when stored at -20°C.

RefSeq: [NM_001043336.1](#), [NP_001036801.1](#)

RefSeq Size: 3755 bp

RefSeq ORF: 2352 bp

Locus ID: 68519

UniProt ID: [Q05BC3](#)

Cytogenetics: 12 59.46 cM

Gene Summary:

Modulates the assembly and organization of the microtubule cytoskeleton, and probably plays a role in regulating the orientation of the mitotic spindle and the orientation of the plane of cell division. Required for normal proliferation of neuronal progenitor cells in the developing brain and for normal brain development. Does not affect neuron migration per se. [UniProtKB/Swiss-Prot Function]