

Product datasheet for **MG218590**

Arhgap45 (NM_001142701) Mouse Tagged ORF Clone

Product data:

Product Type:	Expression Plasmids
Product Name:	Arhgap45 (NM_001142701) Mouse Tagged ORF Clone
Tag:	TurboGFP
Symbol:	Arhgap45
Synonyms:	6330406L22Rik; AW539505; Ha-1; Hmha1
Mammalian Cell Selection:	Neomycin
Vector:	pCMV6-AC-GFP (PS100010)
E. coli Selection:	Ampicillin (100 ug/mL)
ORF Nucleotide Sequence:	>MG218590 representing NM_001142701 Red=Cloning site Blue=ORF Green=Tags(s)

TTTTGTAATACGACTCACTATAGGGCGGCCGGAATTCGTCGACTGGATCCGGTACCGAGGAGATCTGCC
GCC**CGATCGCC**

ATGTTCTCTCGGAAGAAGCGAGAAGCTTATGAAAACCTCCCTCTATTTCCAAAAGAACCAGCGGGGAGCC
CCAACCCGAGTCTCTCAGGGGAGCTGCCAGGAAGGATTGGACAGAAGCTCCCGGCCTGGAGCCACC
AGCCACATCCCTGTCCACGGTAGCCAAGGGCACAGGGACTCAAAGACCCACCAGCCTGAGCCGCCAT
GCCAGTGCAGCAGGCTTCCCGCTCTCGGCACTGCCACCTGGACCCTGGCCGTGGGTACCGAAGCCCC
TTTCTGCGGCCAGTCCGGCAGAGTTACCCACTGAGGGAGCTTCCCTGATGGCGTAGAAGACATCTCAAC
CCTGCTGGCGGATGTGGCCCGCTTTGCTGAGGGCTTGGAGAAGCTCAAGGAGTGTGTGCTGACGAGCAGC
TTCTCGAGGCCCGCCGCCACTGGCCCATGAGTGCCTGGGTGAAGCTCTGCGAGTCATGCGCCAGGTCA
TCTCCAGATACCCACTCCTCAACACCGTGGAGACACTCACAGCCGCTGGTACTCATTGCCAAGGTCAA
AGCCTTTCATTATGAATGCAACAATGAATCAGATAAGAGGGAAATTTGAGAAGGCTCTGAAAACATTGCG
GTGTCTTCAGCTGCACTGTGTCCGAGTTCCTTTGGGTGAAGTGGACAGCAGTACTCTCCTGGCGGTGC
CTCCGGGGGACCCAGCCAGTCCATGGAGAACCTTTATGGGGCTGGCACGGAGGGGCCCCACATAACGT
GGAGGAATGTGAAGAAGTTGCCTGCCCCCGAAGAGGTGGACATGCTTCTGCAGCGATGCGAAGGGGT
GTGGACGCTGCACTGCAGTATGCAAAAAGCATGGCCAGGTACATGAAGGACCTCATCAGTACCTGGAGA
AGAGGACCACCCTGGAGATGGAATTCGCCAAAGGTCTCCAGAAGGTTGCCACAAGTGCAGACAGAGCGT
CACACACGAGCCCCACATGCCTCTCTTGTCCATCTACTACTGGCCCTGGAACAAGATTTGGAGTTTGGC
CACGGCATGGTGCAGGCAGCGGGCACACTGCAGACCCAGACCTTCATGCAGCCCTGACGCTGCGGCGGT
TGGAGCATGAGAGGCGCAGGAAGGAGATCAAAGAATCTTGGCATCGAGCACAGAGGAAGCTGCAAGAGGC
AGAGGCCAACCTGCGCAAGGCCAAACAGGGCTACAAACAACGCTGTGAAGACCACGACAAGGCCCGGCTC
CAGGTGGCCAAGGCTGAGGAGGAACAACAGGGCACAGGCCAGGCCAGGGACTGCGGCCTTAAGGCC
TGGACAAGAGGCGCAGACTGGAGGAAGAGGCCAAAACAAGGCCGAGGAGCCATGGCCACTTACCGCAC
ATGCGTGGCAGACGCAAAGACACAGAAGCAGGAGCTGGAGGACACAAAGGTGACTGCGCTGCGGCAGATT



[View online »](#)

CAGGAGGTCATCAGGCAGAGTGATCAGACCATTAAGTCGGCCACCATCTCCTACTACCAGCTGATGCACA
 TGCAGACAGCACCCTGCCCGTGAACCTCCAGATGCTGTGCGAGAGCAGCAAATATGACCCGGGCCA
 ACAGTACGCATCTCACGTGCGTCAGCTGCAGAGAGGCGAGGAGCCGGACGTGCGCTACGACTTTGAGCCT
 TATGTCTTAACAACCTCGTCCCAATCATGCGTACACGGAAGGGCAGCTTCAACCTGGTGATGCTT
 CAGGACCCGAAGCTGCTGGTAGTCCCCCGAGGAAGGTGGCACCTCTGAGGCAGCACCAACAAGGACCA
 CAGGGGGGACGAGGTCACCAGTTTCAAGTCTGGCCATCTCCATCTCAGACACCCGAAGTTGGTCTG
 GACACCAGCTCAGGGGACTTGAAGAAGTTCGATCGAACATCTCCAGTGGGACGATGTCAATCCAGTGG
 AGCTGGGGATCAGGAAGCTGGCTTGGTAGCTCCGCCTTTGATTCAGCTGACCTCAATGGCATGGACCC
 CGAGTTACCTGTGGCCATGCCAGTGGACCCTCCGCCATGTGGGATTGTCCAAGGCAGCCCGCACACAC
 CGACTTCGCAAACGCGCACGCCAGCAAGTGCAGAGAGTGAACAGCTATGTGTAATCCAAAGGAGCTG
 AATGTGAAGAGTGTCTGGCTTGTACAAAAAGTGTGGAGACCCTGGCCATCCAGTGTGGCCACAA
 GAAGCTTCAGGGCCGCTGCAGCTCTTTGGACAAGACTTCAGCCAGGCAGCCCTCAGCACCCCTGATGGG
 GTGCCCTTATTGTCAAAAAATGTGTCTGTGAGATTGAGCGCGGGCACTGCACACCAAGGGGATCTACC
 GGGTCAATGGCGTAAAAACGCGTGTGGAGAAGCTGTGCCAGGCTTTTGAATGGCAAAGAGTTGGTGA
 GTTGTACAGGCCTCACCCACGACATCAGCAACGTCTAAAGCTATACCTGCGGCAGCTACCGGAGCCC
 CTATCTCTTTTCGCTTCTACCATGAGCTGGTGGGACTAGCTAAGGACAGCCTAAAGGCCGAAGCCGAAG
 CTAAGGCAGCGAGCCGGGTCCGGCAGGGTGGTCCGAGAGTGAGGCTGCACCTTGGCTATGGTGGGCCG
 CCTGCGTGAGCTCATGCAGGATCTGCCAGCCGAAAACCGGGCCACTCTTATACCTGCTGAAGCACTTG
 CGAAGGATCGTGGAAATGGAGCAGGATAACAAGATGACCCCTGGGAACCTGGGCATCGTTTTCGGGCCA
 CACTGTTGCGGCCTCGACCCACTGACGCCACCGTGTCCCTCTCTCTCTGGTGGATTATCCCCACAGGC
 CCGAGTTATTGAGACTCTGATTGTCCACTACGGCTGGTCTTTGAGGAGGAGCCAGAGGAGGCGCCTGGC
 AGCCAGGAGGGGATCCACCCAGTGTGGCCAGCTGGAGTCTGCTGAGGGCATTGTCTCCCTCGCAGG
 AGGAGGCAGAGGACGGAAGCCGAGAATCTCAGCGGCATCTAATGACTCGGACTCTGAGCTGGAAGACGC
 TTCTGACCCCTTTCATCTCGGACGCCAGTGTCTACACCGCCTCAGTTTCTTGAGCAGACCCGAGGCA
 GGCTGGAGGAAGTCCCGAGGCCATAGTGGCAGTGGAGAACAGCTGGAGGGTGGAGATGGAGCCCGG
 GTCCGTGGCTGTGCACTTCAACACCAACCAGTCCAACAACACATCACGGGCCCTCTGCCACCATGCG
 GCTCCGAGGAGGCGAGATCACAGGTGGCACCAGTCAGGAGCGGCAGCCACAGTTCGTG

AGCGGACCGACGCGTACGCGGCCGCTCGAG - GFP Tag - GTTTAA

Protein Sequence:

>MG218590 representing NM_001142701
 Red=Cloning site Green=Tags(s)

MFSRKKRELMKTPSISKKNRAGSPNPQSSSGELPRKDWTEAPGLEPPATSLSTVAKGTGLKRPTLSLRH
 ASAAGFPLSGTATWTLGRGYRSPLSAASPAELPTEGAFPDGVEDISTLLADVARFAEGLEKLKECVLQDD
 LLEARRPLAHECLGEALRVMRQVISRYPLLNVTETLTAAGTLIAKVKAHFHYECNNESEKREFEKALETIA
 VSFCTVSEFLLGEVDSSTLLAVPPGDPSSMENLYGAGTEGPPHNVEECEEGCLPPEEVDMLLQRCEGG
 VDAALQYAKDMARYMKDLISYLEKRTTLEMEFAKGLQKVVHNCRQSVTHEPHMPLLSIYSLALEQDLEFG
 HGMVQAAGTLQTQTFMQPLTLRRELEHERRRKEIKESWHRAQRKLQEAANLRKAKQYKQRCEHDHAKARL
 QVAKAEQEQGTGPGAGTAASKALDKRRRLEEEAKNKAEEAMATYRQCVADAKTQKQLEEDTKVTLRQI
 QEVIRQSDQTIKSATISYYQLMHMQTAPLPVNFQMLCESSKLYDPGQYASHVRQLQRGEEDPVRYDFEP
 YVSNNSWSPIMRTRKGSFNPGDASGPEAAGSPPEEGGTSEAPNKHRRGGRGHQVHKSWPISISDTEVGL
 DTSSGDLKFFDRTSSSGTMSSEELGDQEAGLVAFAFSDADLNGMDPELVPAMPSPFRHVGLSKAARTH
 RLRKLRTPAKCRECNYSYVYFQGAEECECLACHKKCLETLAIQCCHKKLQGRQLQFGQDFSQALSTPDG
 VPFIVKCVCEIERRALHTKGIYRVNGVKTRVEKLCQAFENGKELVELSQASPHDISNVLKLYLRQLPEP
 LISFRFYHELVLAKDSLKAEAEAKAASRGRQGGSEEAATLAMVGRLRELMQDLPAENRATLLYLLKHL
 RRIIVEMEQDNKMPGNLGVFGPTLLRPRPTDATVSLSSLDVYDPHQARVIETLIVHYGLVFEEPEEAPG
 SQEGASTQCGQLESAGEIVFPLQEEAEDGSRESHAASNDSDSELEDASDPLSSSDASALHRLSFLQTEA
 GLEEGPQSHSGSEEQLEGEDGAPGPWLCHFNTNQSNNTSRAPLPTMRLRGGQITGGTSQERQPQFV

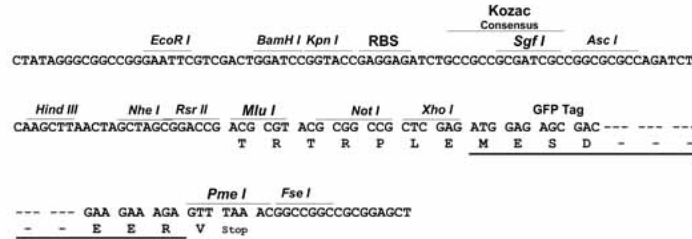
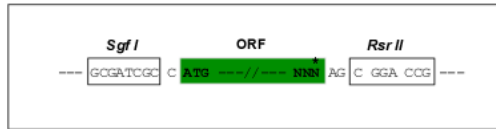
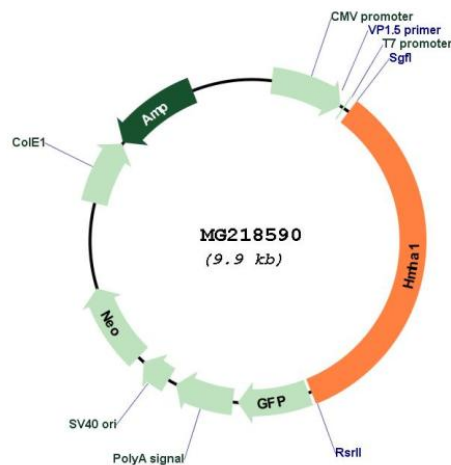
SGPTRRRLE - GFP Tag - V

Restriction Sites:

Sgfl-RsrII

Cloning Scheme:

Cloning sites used for ORF Shuttling:


Plasmid Map:

ACCN: NM_001142701

ORF Size: 3348 bp

OTI Disclaimer: The molecular sequence of this clone aligns with the gene accession number as a point of reference only. However, individual transcript sequences of the same gene can differ through naturally occurring variations (e.g. polymorphisms), each with its own valid existence. This clone is substantially in agreement with the reference, but a complete review of all prevailing variants is recommended prior to use. [More info](#)
OTI Annotation: This clone was engineered to express the complete ORF with an expression tag. Expression varies depending on the nature of the gene.

Components:	The ORF clone is ion-exchange column purified and shipped in a 2D barcoded Matrix tube containing 10ug of transfection-ready, dried plasmid DNA (reconstitute with 100 ul of water).
Reconstitution Method:	<ol style="list-style-type: none">1. Centrifuge at 5,000xg for 5min.2. Carefully open the tube and add 100ul of sterile water to dissolve the DNA.3. Close the tube and incubate for 10 minutes at room temperature.4. Briefly vortex the tube and then do a quick spin (less than 5000xg) to concentrate the liquid at the bottom.5. Store the suspended plasmid at -20°C. The DNA is stable for at least one year from date of shipping when stored at -20°C.
RefSeq:	<u>NM_001142701.1, NP_001136173.1</u>
RefSeq Size:	3928 bp
RefSeq ORF:	3351 bp
Locus ID:	70719
UniProt ID:	<u>Q3TBD2</u>
Cytogenetics:	10 C1
Gene Summary:	Contains a GTPase activator for the Rho-type GTPases (RhoGAP) domain that would be able to negatively regulate the actin cytoskeleton as well as cell spreading. However, also contains N-terminally a BAR-domain which is able to play an autoinhibitory effect on this RhoGAP activity.[UniProtKB/Swiss-Prot Function]