

Product datasheet for **MG218587**

Kcnh3 (NM_010601) Mouse Tagged ORF Clone

Product data:

Product Type:	Expression Plasmids
Product Name:	Kcnh3 (NM_010601) Mouse Tagged ORF Clone
Tag:	TurboGFP
Symbol:	Kcnh3
Synonyms:	AU019351; C030044P22Rik; Elk; Elk2; Kv12.2; Melk; Melk2
Mammalian Cell Selection:	Neomycin
Vector:	pCMV6-AC-GFP (PS100010)
E. coli Selection:	Ampicillin (100 ug/mL)
ORF Nucleotide Sequence:	>MG218587 representing NM_010601 Red=Cloning site Blue=ORF Green=Tags(s)

TTTTGTAATACGACTCACTATAGGGCGGCCGGAATTCGTCGACTGGATCCGGTACCGAGGAGATCTGCC
GCC**CGATCGCC**

ATGCCGGCCATGCGGGGGCTCCTGGCGCCGAGAACACCTTCCTGGACACCATCGCCACCCGTTTCGACG
GGACGCACAGCAACTTCGTGCTGGGCAACGCCAGGTGGCGGGGCTCTTCCCTGTGGTCTACTGCTCCGA
TGGCTTCTGTGACCTCACGGGTTTCTCCAGAGCTGAGGTATGCAGCGGGGCTGTGCTGCTCCTCCTC
TATGGCCAGACACCAGTGAGCTGGTCCGCAACAGATCCGAAAGGCCCTAGATGAGCACAAGAATTCA
AGGCTGAAGTATCCTGTACCGAAGAGTGGGCTTCCATTCTGGTGTCTCCTGGATGTGATACCTATAAA
AAATGAGAAGGGGAGGTGGCCCTTCTCCTGGTCTCTACAAGGACATCAGCGAGACCAAGAACCGAGGA
GGCCCTGACAAGTGAAGGAGAGAGGCGGTGGCCGGCGCGATATGGTCGGGCCGGATCCAAAGGCTTCA
ATGCCAATCGGAGGCGGAGCCGGGCGAGTTCTCTACCACCTCTCTGGCCATCTGCAGAAGCAACCCAGGG
CAAGCACAAGCTCAATAAGGGAGTGTGGGAGAGAAGCCAAATTTGCCTGAATATAAAGTCGCTGCTATC
CGGAAGTACCCTTTATCCTGCTGCACTGTGGGCTCTGAGAGCCACCTGGGATGGCTTCATCCTGCTTG
CCACACTCTACGTGGCAGTCACTGTGCCATACAGTGTGTGTGTGAGCAGCAGCGGAACCCAGTGTGCTG
CCGTGGCCACCTAGTGTCTGTGACCTGGCTGTGGAGGTCCTTCTCATCTTAGATATTGTGCTGAATTTT
CGTACTACATTTGTCCAAGTCAAGCCAGGTTGGTATTTGCCCAAAGTCCATTTGCCTCCACTACGTCA
CCACCTGGTTCCCTGGATGTCATAGCAGCACTGCCCTTTGACCTACTACATGCCTTCAAGGTCAACGT
GTACGTTGGGGCTCACCTCCTGAAGACCGTGCGACTGCTGCGCCTGCTGCGCCTGCTGCCAAGACTGGAC
CGGTACTCACAGTACAGCGCGTGTGCTCACCTTGTGCTCATGGTGTCTTCGCCCTGCTCGCTCACTGGG
TGGCCTGCGTCTGGTTTTACATCGGCCAGCAAGAGATTGAGAGCAGCGAGTCGGAGCTGCTGAGATCGG
CTGGCTGCAGGAGCTGGCAGCAGGCTGGAGACCCCTACTACCTGGTGTGAGCCGGAGTCCAGATGGAGGG
AACAGCTCTGGCCAGAGTAAAAGTGCAGCAGCAGCAGCAGCAGTGGCAGCGGTGGCGGCAGAGGCA
GCGAAGCCAATGGGACCGGGCTGGAGCTGCTGGGTGGCCCGTCCCTACGAGCGCCTACATCACCTCCCT
GTACTTCGCGCTCAGCAGTCTACCAGTGTGGGCTTCGGCAACGTGTCCGCTAACACAGACAGGAGAAG



[View online »](#)

ATCTTCTCCATCTGCACCATGCTTATCGGAGCTCTAATGCATGCAGTGGTGTGGGAATGTGACGGCCA
 TCATCCAGCGCATGTATGCTCGCCGCTTCTGTACCACAGCCGCACTCGTGACCTGCGAGACTACATCCG
 CATCCACCGCATCCCCAAACCCCTCAAACAACGAATGCTGGAGTACTTCCAAGCCACCTGGGCTGTGAAC
 AATGGCATCGATACCACTGAGCTGCTGCAGAGCCTCCCGATGAGCTTCGTGCAGACATCGCCATGCACC
 TGCACAAGGAAGTCTGCAGTCCCGTGTTCGAGGCCGCCAGCCGTGGCTGCCTGCGGGCGCTGTCCCT
 GGCCCTGAGGCCGGCCTTCTGCACGCCGGGCGAGTACCTATTACCAAGGGCATGCTCTCCAGGCCCTC
 TATTTTGTCTCGGGTCCATGGAGGTCCTCAAAGTGGCACCGTGTCTCGCCATTCTAGGGAAGGGTG
 ACCTGATCGGCTGCGAGCTGCCCCAGCGGGAACAAGTAGTGAAGGCCAATGCAGACGTGAAGGGCTGAC
 ATACTGCGTCTACAGTGTCTGCAGTTGGCTGGGCTGCATGAGAGCCTTGTCTGTACCCTGAGTTTGC
 CCACGCTTTAGCCGTGGCTCCGAGGGGAGCTCAGCTACAACCTGGGAGCTGGTGGAGTCTCTGCGGAGG
 TGGATACCAGCTCCCTGAGTGGTGAACAACCCCTCATGTCCACACTGGAGGAGAAGGAGACAGATGGGGA
 GCAGGGACACACGGTCTCACCAGCCCAGCAGATGAGCCCTCCAGTCCCCTGCTGTGCGCCGGCTGTACC
 TCCTCCTCCTCAGCCGCCAACTACTCTCCCCAGTGAAGTGCCTCGCCGAGGTTGGTGGCAGAG
 GCGGCCAAGTAGGGCAGGGTTTTGAAGCCTGAGGCTGGTCTTCTGCTCATCCAGGTCACCTGATGG
 GCTGCAGTACCCCCATGCCATGGAATGTACCCAGACTGAGCCCCAGGGTCTAGATGGCATTGAA
 GATGGCTGCAGCTCTGACCAGCCAAAGTCTCTTCCGAGTGGTCACTGCGCCAGAATGTAGCAGCA
 GCCCTCCCAGGAACAGAGAGCGGCTGCTTACAGTCCCCTTGGGGCCAGTGAAGCAAGAAACACAGA
 CACGCTGGACAAGCTACGGCAGGCGGTGATGGAGTGTCTGAACAGGTGCTGCAGATGCGGGAGGGACTG
 CAGTCACTTCGCCAGGCTGTGCAGCTCATCTGGTGCCTCAAGGGGAAGGCCAGTGTCCCGGGGATCAG
 GAGAGGAGCCGTGCCAGCCACCGCCTCTGGGCTCTACAACCCCTGCGTGTGGACACTGGGGCATCGTC
 CTACTGCCTGCAGCCCCAGCAGTTTGGTTTTGAGTGGGACCTGGCCTCACCCCGTCCAGGGCAACCC
 CCTCCCCTCATGGCGCCTGGCCCTGGGGCCCCCAGCATCTCAGAGTCCCCTTGGCTCGAGCCAGCACC
 CTTTATGGACCTCACTTCAGACTCGGAGCCCCCTGGCTCTGGAGATCTGCTCTGAGCCAGCAGCACC
 AGCCTCACCCCTCCTTCTGAGGAAGGGCTAGGACTGGGACCCAGCACCTGTGAGCCAGGCTAGGCT
 ACCAGTACTGGAGAGCCCCCTCCGGGGCCAGGAGCCGAGCCTTGCCTGGGATCCCCACAGCCTAGAGA
 TGGTGCTCATTGGCTGCCACGGTCTGGCACGGTCCAGTGGACCCAGGAAGAAGGCACAGGGGTC

ACGCGTACGCGGCCGCTCGAG - GFP Tag - GTTTAA

Protein Sequence:

>MG218587 representing NM_010601
 Red=Cloning site Green=Tags(s)

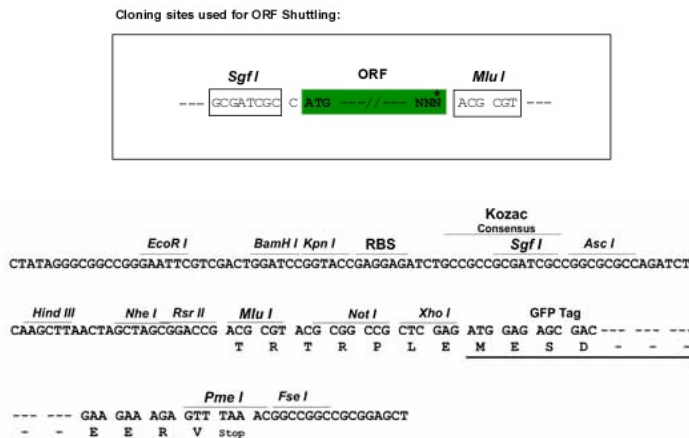
MPAMRGLLAPQNTFLDTIATRFDGTHSNFVLGNAQVAGLFPVVYCSDFCDLTGFSRAEVMQRGCACSF
 YGPDTELVRQQIRKALDEHKEFKAELILYRKSGLPFWCLLDVPIKNEKGEVALFLVSHKDISETKNRG
 GPDNWKERGGRRRYGRAGSKGFNANRRRSRAVLYHLSGHLQKQPKGKHLNKGVFGEKPNLPEYKVA
 RKSPFILLHCGALRATWDGFILLATLYAVTVPVSVCVSTAREPSAARGPPSVCDLAVEVLFILDIVLNF
 RTTFVSKSGQVVFAPKSICLHYVTTWFLLDVIAALPFDLLHAFKVNYYVGAHLLKTVRLRLRLRLPR
 RYSQYSAVVLTLLMAVFAALLAHWVACVWFYIGQQEIESESESELPEIGWLQELARRLETYYLVSR
 SPDGGNSSGQSENCSSSSSSSGSGGGRGSEANGTGLELLGGPSLRSAITSLYFALSSLTSVGF
 GNVNSANTDTEKIFSICTMLIGALMHAVVFGNVTAIQRMVARRFLYHSRTRDLRDYIRIHRIPKPL
 KQRMLEYFQATWAVNNGIDTTELLQSLPDELADIAMHLHKEVLQLPLFEASRGCLRALSLALRPA
 FCTPGEYLHQQGDALQALYFVCSGSMEVLKGGTVLAILGKGDIGCELPQREQVVKANADV
 KGLTYCVLQCLQLAGLHESLALYEFAPRFSRGLRGELSYNLGAGVSAEVDTS
 SLDNTLMSTLEEKETDGEQGHVSPAPADEPSSPLLSPGCTSSSSAAKLLSPRRTAPR
 PRLGGRGRPSRAGVLKPEAGPSAHPRLDGLQLPMPWNVPPDLSPRVVDGIE
 DGCSSDQPKFSFRVQSGPECS SSPSGTESGLLTVPLGPSEARNTDLDKLRQAVMEL
 SEVQLQMRGLQSLRQAVQLILVPQEGQCPRGSGEPCPATASGLLQPLRVDTGASSYCL
 QPPAGSVLSGTWPHRPPGQPPLMAPWPWGPASQSSPWPRATALWTSTSDSEPPGSGDL
 CSEPSTPASPPPSEEGARTGTPAPVVSQAEA TSTGEP PPPGGRALPWDPHSLEMV
 LIGCHGPGTVQWTQEEGTG

TRTRPLE - GFP Tag - V

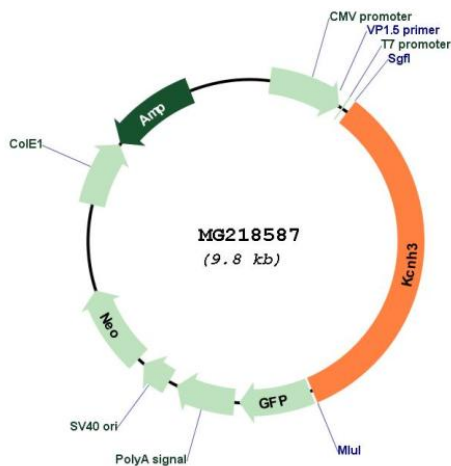
Restriction Sites:

Sgfl-MluI

Cloning Scheme:



Plasmid Map:



ACCN: NM_010601

ORF Size: 3285 bp

OTI Disclaimer: The molecular sequence of this clone aligns with the gene accession number as a point of reference only. However, individual transcript sequences of the same gene can differ through naturally occurring variations (e.g. polymorphisms), each with its own valid existence. This clone is substantially in agreement with the reference, but a complete review of all prevailing variants is recommended prior to use. [More info](#)

OTI Annotation: This clone was engineered to express the complete ORF with an expression tag. Expression varies depending on the nature of the gene.

Components:	The ORF clone is ion-exchange column purified and shipped in a 2D barcoded Matrix tube containing 10ug of transfection-ready, dried plasmid DNA (reconstitute with 100 ul of water).
Reconstitution Method:	<ol style="list-style-type: none">1. Centrifuge at 5,000xg for 5min.2. Carefully open the tube and add 100ul of sterile water to dissolve the DNA.3. Close the tube and incubate for 10 minutes at room temperature.4. Briefly vortex the tube and then do a quick spin (less than 5000xg) to concentrate the liquid at the bottom.5. Store the suspended plasmid at -20°C. The DNA is stable for at least one year from date of shipping when stored at -20°C.
RefSeq:	<u>NM_010601.4</u>
RefSeq Size:	3583 bp
RefSeq ORF:	3288 bp
Locus ID:	16512
UniProt ID:	<u>Q9WVJ0</u>
Cytogenetics:	15 F1
Gene Summary:	The protein encoded by this gene is a voltage-gated potassium channel alpha subunit predominantly expressed in the forebrain. An increase in cognitive function was observed when this gene was knocked out, while deletion of the gene resulted in hippocampal hyperexcitability and epilepsy. [provided by RefSeq, Sep 2015]