

## Product datasheet for **MG218571**

### Cox18 (NM\_001033310) Mouse Tagged ORF Clone

#### Product data:

**Product Type:** Expression Plasmids  
**Product Name:** Cox18 (NM\_001033310) Mouse Tagged ORF Clone  
**Tag:** TurboGFP  
**Symbol:** Cox18  
**Synonyms:** BC038311  
**Mammalian Cell Selection:** Neomycin  
**Vector:** pCMV6-AC-GFP (PS100010)  
**E. coli Selection:** Ampicillin (100 ug/mL)  
**ORF Nucleotide Sequence:** >MG218571 representing NM\_001033310  
 Red=Cloning site Blue=ORF Green=Tags(s)

TTTTGTAATACGACTCACTATAGGGCGGCCGGAATTCGTCGACTGGATCCGGTACCGAGGAGATCTGCC  
 GCC**CGATCGCC**

ATGCTGTGCCGGTCGTGTGCCGGTGGCTCAGGTCGTCGCCACCCTGCGGCTCCCGGCACCGAGATCAC  
 CGCCCGCCTGGAGCAGCGCGGGCTCCCAGCCCTCCGGTATGGGCAGCCGCTTCGGTGTCTGCGGCCTC  
 TCCAGGTGGTGGTATGAGGCCCTGGCAGCGTCGGCGCCGGTGGCACCAGGAGGAAGTGTCTGGGC  
 GCGCAGGAGGCTACCGGCCTCCCTGGTGGAGCAACATCATACTCAGCACCGTTGCCCTGCGGGTGTCT  
 TCACTCTGCCCTGGCCGCTATCAGCACTACATCCTGGCTAAGGTGAAAACCTGCAACCAGAAATAAA  
 AGACATCGCCAAGCGCCTTAACCAAGAAGTTGAGTCTGTGCCCGTCAGTTTGGATGGTCCAAGAGAGTG  
 GCTAGACTCACCTATCTGAAGAATGCGGAGACTTGTCTCAGAGCTGTATGTCCGTGACAACTGCCACC  
 CTTTCAAAGCCACGGTGTCTGGTCTGGTCCAGCTTCCAATGTGGGTTTTTCATCTGTGCGCCTCCGGAA  
 CCTCAGCACTGGGGCCACACATTCAGACGAGGCAATTTCTGTTTCAAGAACAGTTAGCTGTGGCGGGACG  
 CTGTGGTTTCTGACCTCACCAGTGGATTCCACCTGGATTCTGCCTGTCTCTGTTGGTGTGTCAACC  
 TACTGATAGTGGAGATTTTTGCTCTACAAAAAATGGGACGTCTCGTTTTCAAATGCATGTTACAAATTT  
 TGTCCGAGCTGTATCCGTGTTGATGATTCCAGTTGCTGCAACAGTACCCTCGCGCTTGTCTCTACTGG  
 CTGTGCTCCAGCCTCATGGCCCTGCACAGAACCTGCTGCTGCGCTCCCTGGGTTCCGCCAGCTCTGCC  
 GGATACCACCAAGCAAGTCCGACTCAGAGACCCGTACCGAGACCTCTCTGCTGCCTTTTGGCCAAAGTT  
 CCTTTCAAGAAAACGA

**ACGCGT**ACGCGGCCGCTCGAG - GFP Tag - GTTTAA



[View online »](#)

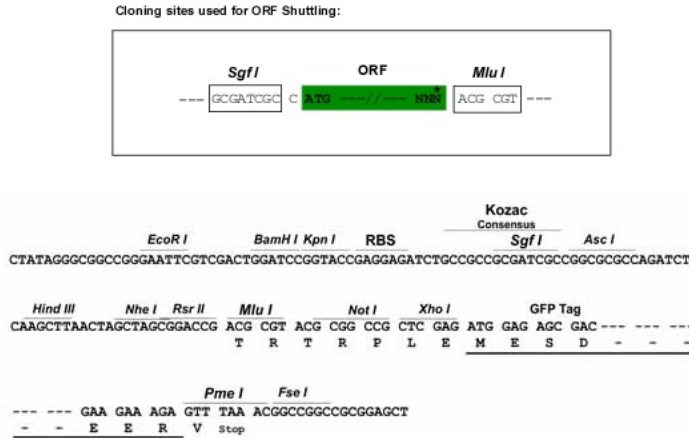
**Protein Sequence:** >MG218571 representing NM\_001033310  
 Red=Cloning site Green=Tags(s)

MLCRSCAGWLRSLPTLRLPAPRSPPAWSSARLPALPVWAAASVSAASPGGWYEAL AASAPVRTAEEVLLG  
 AQEATGLPWWNSIILSTVALRGAVTLPLAAYQHYILAKVENLQPEIKDIAKRLNQEVAVCARQFGWSKRV  
 ARLTYLKNMRRVLVSELYVRDNCHPFKATVLVWVQLPMWVVISVALRNLSTGATHSDAGISVQEQLAAGGT  
 LWFPLDTAVDSTWILPVSYGVVNLLIVEIFALQKIGTSRFQMHVTNFRVAVSVLMIPVAATVPSALVLYW  
 LCSSLMGLAQNLLLRSPGFRQLCRIPPSKSDSETPYRDL SAAFC AKFLSRKR

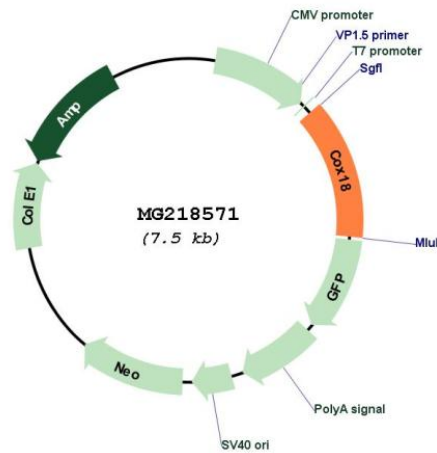
TRTRPLE - GFP Tag - V

**Restriction Sites:** SgfI-MluI

**Cloning Scheme:**



**Plasmid Map:**



**ACCN:** NM\_001033310

**ORF Size:** 993 bp

<b>OTI Disclaimer:</b>	The molecular sequence of this clone aligns with the gene accession number as a point of reference only. However, individual transcript sequences of the same gene can differ through naturally occurring variations (e.g. polymorphisms), each with its own valid existence. This clone is substantially in agreement with the reference, but a complete review of all prevailing variants is recommended prior to use. <a href="#">More info</a>
<b>OTI Annotation:</b>	This clone was engineered to express the complete ORF with an expression tag. Expression varies depending on the nature of the gene.
<b>Components:</b>	The ORF clone is ion-exchange column purified and shipped in a 2D barcoded Matrix tube containing 10ug of transfection-ready, dried plasmid DNA (reconstitute with 100 ul of water).
<b>Reconstitution Method:</b>	<ol style="list-style-type: none"><li>1. Centrifuge at 5,000xg for 5min.</li><li>2. Carefully open the tube and add 100ul of sterile water to dissolve the DNA.</li><li>3. Close the tube and incubate for 10 minutes at room temperature.</li><li>4. Briefly vortex the tube and then do a quick spin (less than 5000xg) to concentrate the liquid at the bottom.</li><li>5. Store the suspended plasmid at -20°C. The DNA is stable for at least one year from date of shipping when stored at -20°C.</li></ol>
<b>RefSeq:</b>	<a href="#">NM_001033310.3</a> , <a href="#">NP_001028482.2</a>
<b>RefSeq Size:</b>	1338 bp
<b>RefSeq ORF:</b>	996 bp
<b>Locus ID:</b>	231430
<b>UniProt ID:</b>	<a href="#">Q8VC74</a>
<b>Cytogenetics:</b>	5 E1
<b>Gene Summary:</b>	Mitochondrial membrane insertase required for the translocation of the C-terminus of cytochrome c oxidase subunit II (MT-CO2/COX2) across the mitochondrial inner membrane. Plays a role in MT-CO2/COX2 maturation following the COX20-mediated stabilization of newly synthesized MT-CO2/COX2 protein and before the action of the metallochaperones SCO1/2. Essential for the assembly and stability of the mitochondrial respiratory chain complex IV (also known as cytochrome c oxidase).[UniProtKB/Swiss-Prot Function]