

## Product datasheet for **MG218547**

### Top1 (NM\_009408) Mouse Tagged ORF Clone

#### Product data:

Product Type:	Expression Plasmids
Product Name:	Top1 (NM_009408) Mouse Tagged ORF Clone
Tag:	TurboGFP
Symbol:	Top1
Synonyms:	A1467334; D130064I21Rik; Top-1
Mammalian Cell Selection:	Neomycin
Vector:	pCMV6-AC-GFP (PS100010)
E. coli Selection:	Ampicillin (100 ug/mL)



[View online »](#)

**ORF Nucleotide Sequence:**

>MG218547 representing NM\_009408.  
 Blue=ORF Red=Cloning site Green=Tag(s)

```
GCTCGTTTAGTGAACCGTCAGAATTTTGTAAACGACTCACTATAGGGCGGCCGGGAATTCGTGACTG
GATCCGGTACCGAGGAGATCTGCCGCCCGCATCGCC
ATGAGCGGGGACCATCTCCACAACGATCCCAGATCGAAGCGGATTTCCGATTGAATGATTCTCACAAA
CACAAAGATAAACACAAGATCGAGAACACCCGGCATAAGGAGCACAGAAGGATAAGGATAAGGACCCGG
GAAAAGTCTAAGCATAGCAACAGTGAACATAAAGATTCTGAAAAGAAACCAAAGAGAAAGAGAAAACC
AAACACAAGATGGCAGCTCAGAAAAACATAAAGACAAACATAAAGACAGAGACAAGGAAAGACGAAAG
GAGGAAAAGATTAGAGCTGCTGGGGATGCAAAAAATAAAGAAGGAAAAGGAAAATGGCTTCTCTAGTCCG
CCACGAATTAAGATGAACCTGAGGATGATGGCTATTTTCTCTCCAAAAGAGGATATTAAGCCATTG
AAGAGGCTTCGAGATGAAGATGATGCTGATTATAAACCTAAGAAAATTAAGACAGAAGATATCAAGAAG
GAGAAGAAAAGAAAATCAGAAGAGGAAGAGGATGGTAACTTAAAAAGCCCAAGAATAAAGATAAAGAT
AAAAAAGTTGCTGAGCCAGATAATAAGAAAAAGAAGCCGAAAAGGAAGGGAACAGAAGTGAAATGG
TGGGAAGAAGAAGTTATCCAGAAGGCATCAAATGGAAATTCCTAGAGCATAAAGGGCCTGTCTTCGCT
CCACCATATGAGCCTCTGCCAGAGAGTGTCAAGTTTTACTATGATGGTAAAGTTATGAAGCTGAGTCTT
AAAGCAGAAGAAGTAGCTACATTTCTTTGCAAAAAATGCTTGACCACGAATATACTACTAAGGAAATATTC
AGGAAAAATTTCTTTAAAGATTGGAGAAAGGAAATGACTAATGACGAAAAAAATACGATTACCAACCTA
AGCAATGCGACTTTACACAGATGAGCCAGTATTTCAAAGCGCAGTCAGAAGCTCGGAAACAGATGAGC
AAGGAAGAAAAATGAAAATCAAAGAAGAAAATGAAAAGTTATTGAAAGAATACGGCTTTTGTGTAATG
GATAATCATAGAGAGCGGATTGCCAACTCAAGATAGAGCCTCCGGGGCTTTTCCGAGGCCGAGGGAAAC
CACCCCAAGATGGGTATGCTGAAGAGAAGGATCATGCCTGAGGACATCATCAACTGTAGCAAAGAC
GCAAAGGTTCTTCTCCCCCTCTGGACATAAATGGAAGGAAGTCCGACATGATAACAAGTTACTTGG
CTGGTCTCCTGGACAGAGAATATCCAAGTCTATCAAATATATCATGCTGAATCCCAAGTTCACGAATC
AAGGGTGAGAAAGACTGGCAGAAGTATGAGACTGCGCGGCGTCTGAAGAAGTGTGTGGACAAGATCCGA
AATCAGTATCGGGAAGACTGGAAGTCCAAGAGATGAAAGTTCGTGAGAGAGCTGTAGCACTGTACTTC
ATTGATAAGCTTGCTCTGAGAGCAGGCAATGAGAAGGAAGAAGGAGAGACGGCAGACACTGTGGGCTGC
TGTTCACTTAGAGTGGAACACATCAATTTACACCCAGAATTGGATGGTCAGGAGTATGTGGTGGAATTT
GACTTTCTGGGAAGGACTCAATCAGATACTATAACAAAGTCCCAGTTGAGAAACGAGTTTTTAAAAAC
TTACAAGTGTATGGAGAACAAGCAGCCTGAGGACGATCTTTTGTGACTTAATACTGGTATTCTA
AATAAACATCTTCAGGATCTCATGGAGGCTTGACTGCCAAGGTGTTCCGTACCTACAATGCCTCCATC
ACACTACAGCAGCAGCTTAAAGAGCTCACAGCCCCTGATGAGAATGTACCAGCGAAGATTCTATCTTAT
AACCGTGCCAATCGAGCTGTTGCAATTTTGTAAACCACCAGAGGGCGCCACCAAAGACCTTTGAGAAG
TCAATGATGAACTTGCACTAAGATTGATGCCAAGAAAGATCAGTTAGCAGATGCTCGAAGGGACCTG
AAAAGTGCTAAGGCTGATGCCAAGTCAAGAGGATGCAAGACCAAGAAGGTAGTAGAGTCAAAAAAG
AAGGCTGTACAGAGACTAGAAGAGCAGTTGATGAAGCTGGAAGTTCAAGCCACAGATCGAGAGGAGAAC
AAACAAATTGCCTTGGGGACCTCCAACTCAATATCTGGACCCTAGGATCACAGTGGCTTGGTGCAAA
AAGTGGGGGTCCAATTGAGAAGATTTACAACAAAACCCAGAGGGAGAAGTTTGCTTGGGCCATTGAT
ATGACTGATGAGGACTACGAGTTT
ACGCGTACGCGGCCGCTCGAG - GFP Tag - GTTTAAAC
```

**Protein Sequence:** >Peptide sequence encoded by MG218547  
 Blue=ORF Red=Cloning site Green=Tag(s)

```

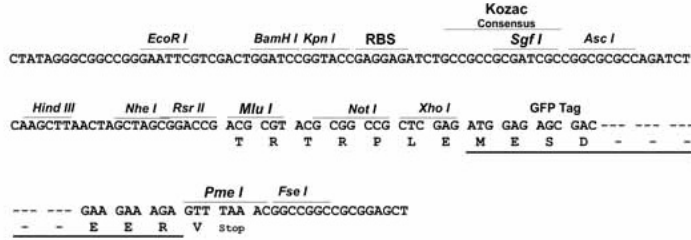
MSGDHLHNSQIEADFRLNDSHKHKDKHKDREHRHKEHKKDKDKDREKSKHSNSEHKDSEKKHKEKEKT
KHKDGSSEKHKDKHKDRDKERRKEEKIRAAGDAKIKKEKENGFSPPRIKDEPEDDGYFAPPKEDIKPL
KRLRDEDDADYKPKKIKTEDIKKEKKRKSEEEEDGKLLKPKNKDKKVAEPDNKKKKPKKEEQKWKW
WEEERYPEGIKWKFLHKGPFVAPPYEPLPESVKFYYDGKVMKLSPKAEEVATFFAKMLDHEYTTKEIF
RKNFFKDWKEMTNDKNTITNLSKCDFTQMSQYFKAQSEARKQMSKEEKLKIKEENEKLLKEYGFCVM
DNHRERIANFKIEPPGLFRGRGNHPKMGMLKRRIMPEDIIINCSKDAKVPSPPGHKWKEVRHDNKVTW
LVSWTENIQGSIKYIMLNPSSRIKGEKDWQKYETARRLKKCVDKIRNQYREDWKSKEMKVRQRAVALYF
IDKLABRAGNEKEEGETADTVGCCSLRVEHINLHPELDGQEVVVEFDGKDSIRYYNKVPVEKRVFKN
LQLFMENKQPEDDLFDRLNTGILNHLQDLMEGLTAKVFRTYNASITLQQQLKELTAPDENVPAKILSY
NRANRAVAIILCNHQRAPPKTFEKSMNLSKIDAKKQDLADARRDLKSAKADAKVMKDAKTKKVVESKK
KAVQRLLEEQLMKLEVQATDREENKQIALGTSKLNYLDPRI TVAWCKKWGVPIEKIYNKTQREKFAWAID
MTDEDYEF
TRTRPLEMESDESGLPAMEIECRITGTLNGVEFELVGGGEGTPEQGRMTNKMSTKGALTFSPYLLSHV
MGYGFYHFGTYPSGYENPFLHAINNGGYTNRIEKYEDGGVLHVSFSYRYEAGRVIGDFKVMGTGFPE
SVIFTDKIIRS NATVEHLHPMGDNDLDGSFTRTFSLRDGGYSSVVDSMHFKSAIHPSILQNGGPMFA
FRRVEEDHSNTELGIVEYQHAFKTPDADAGEERV
  
```

**Chromatograms:** [https://cdn.origene.com/chromatograms/ja3355\\_a03.zip](https://cdn.origene.com/chromatograms/ja3355_a03.zip)

**Restriction Sites:** SgfI-MluI

Cloning Scheme:

Cloning sites used for ORF Shutting:



ACCN: NM\_009408  
 ORF Size: 2301 bp

**OTI Disclaimer:** Due to the inherent nature of this plasmid, standard methods to replicate additional amounts of DNA in E. coli are highly likely to result in mutations and/or rearrangements. Therefore, OriGene does not guarantee the capability to replicate this plasmid DNA. Additional amounts of DNA can be purchased from OriGene with batch-specific, full-sequence verification at a reduced cost. Please contact our customer care team at [custsupport@origene.com](mailto:custsupport@origene.com) or by calling 301.340.3188 option 3 for pricing and delivery.

The molecular sequence of this clone aligns with the gene accession number as a point of reference only. However, individual transcript sequences of the same gene can differ through naturally occurring variations (e.g. polymorphisms), each with its own valid existence. This clone is substantially in agreement with the reference, but a complete review of all prevailing variants is recommended prior to use. [More info](#)

**OTI Annotation:** This clone was engineered to express the complete ORF with an expression tag. Expression varies depending on the nature of the gene.

**Components:** The ORF clone is ion-exchange column purified and shipped in a 2D barcoded Matrix tube containing 10ug of transfection-ready, dried plasmid DNA (reconstitute with 100 ul of water).

**Reconstitution Method:**

1. Centrifuge at 5,000xg for 5min.
2. Carefully open the tube and add 100ul of sterile water to dissolve the DNA.
3. Close the tube and incubate for 10 minutes at room temperature.
4. Briefly vortex the tube and then do a quick spin (less than 5000xg) to concentrate the liquid at the bottom.
5. Store the suspended plasmid at -20°C. The DNA is stable for at least one year from date of shipping when stored at -20°C.

**RefSeq:** [NM\\_009408.2](#), [NP\\_033434.2](#)

**RefSeq Size:** 3859 bp

**RefSeq ORF:** 2304 bp

**Locus ID:** 21969

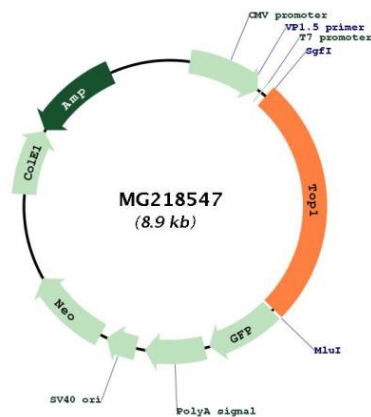
**UniProt ID:** [Q04750](#)

**Cytogenetics:** 2 80.96 cM

**MW:** 90.9 kDa

**Gene Summary:**

Releases the supercoiling and torsional tension of DNA introduced during the DNA replication and transcription by transiently cleaving and rejoining one strand of the DNA duplex. Introduces a single-strand break via transesterification at a target site in duplex DNA. The scissile phosphodiester is attacked by the catalytic tyrosine of the enzyme, resulting in the formation of a DNA-(3'-phosphotyrosyl)-enzyme intermediate and the expulsion of a 5'-OH DNA strand. The free DNA strand then rotates around the intact phosphodiester bond on the opposing strand, thus removing DNA supercoils. Finally, in the religation step, the DNA 5'-OH attacks the covalent intermediate to expel the active-site tyrosine and restore the DNA phosphodiester backbone. Regulates the alternative splicing of tissue factor (F3) pre-mRNA in endothelial cells. Involved in the circadian transcription of the core circadian clock component ARNTL/BMAL1 by altering the chromatin structure around the ROR response elements (ROREs) on the ARNTL/BMAL1 promoter.[UniProtKB/Swiss-Prot Function]

**Product images:**

Circular map for MG218547