

Product datasheet for **MG218539**

Ubap2l (NM_001165988) Mouse Tagged ORF Clone

Product data:

Product Type:	Expression Plasmids
Product Name:	Ubap2l (NM_001165988) Mouse Tagged ORF Clone
Tag:	TurboGFP
Symbol:	Ubap2l
Synonyms:	3110083O19Rik; 4932431F02Rik; A430103N23Rik; C77168; mKIAA0144; Nice-4
Mammalian Cell Selection:	Neomycin
Vector:	pCMV6-AC-GFP (PS100010)
E. coli Selection:	Ampicillin (100 ug/mL)



[View online »](#)

ORF Nucleotide Sequence:

>MG218539 representing NM_001165988
 Red=Cloning site Blue=ORF Green=Tags(s)

TTTTGTAATACGACTCACTATAGGGCGGCCGGGAATTCGTCGACTGGATCCGGTACCGAGGAGATCTGCC
 GCC**CGCATCGCC**

ATGATGACGTCGGTGGGACTAACCAGCCGGGAACTGGGAACAACCTCAAACCAAACCAGACAC
 AGCACAAGCAGCGCCACAGGCCACTGCAGAGCAAATTCGACTTGACAGATGATTTTCGGACCATAATGA
 TGCTGACTTTGAGGAGAAGGTGAAACAATTGATTGATATCACAGGCAAAAACCAGGATGAATGTGTGATT
 GCTTTGCATGACTGCAATGGAGATGTCAACAGAGCCATCAATGTTCTCCTGGAAGGAAATCCAGACACGC
 ATTCCTGGGAGATGGTTGGGAAGAAGAAAGGAGTCTCAGGACAAAAGGATGGTGGACAACTGAATCTAA
 TGAAGAAGGAAAAGAAAATCGAGACCGGGACAGAGACTATAGTCGGCGACGTGGTGGCCACCAAGACGG
 GGGAGAGGTGCCAGCCGTGGACGAGAGTTTCGGGGCCAGGAAAATGGATTGGATGCCACCAAGAGTGGAG
 GGCCTTCTGGAAGAGGCACAGACAGAGGCAGAAGAGGCCGTGGCCGTGGCAGAGGTAGTTCTGGTAGGCC
 AGGAGGAAGGTTTTCTGCTCAAGGAATGGGAACCTTTAACCCAGCTGATTATGCAGAGCCAGCCAACACT
 GATGATAACTATGGCAATAGCAGTGGCAATACATGGAACAACACTGGCCACTTTGAACCAGATGATGGAA
 CAAGTGCATGGAGGACTGCAACAGAAGAGTGGGAACTGAAGACTGGAATGAAGATCTTTCTGAGACCAA
 GATCTTTACCGCCTCTAATGTGTCTTCACTGCCTCTGCCTGCGGAGAATGTGACAATCACTGCTGGTCAG
 AGAATTGACCTTGCTGTTCTGTTGGGAAGACACCATCTTCAATGGAGAATGATTCATCTAATCTGGATC
 CATCTCAGGCTCCTTCCCTGGCTCAGCCTCTGGTGTTAGTAATTCGAAGCAGAATGCCATATCACAGCC
 TGCTTCAGGGAGTACATTTCTCACCATAGCATGGTGAGCATGTTGGGAAAGGATTTGGTGATGTTGGG
 GAAGCTAAAGGTGGCAGTACAACAGGCTCCAGTCTTGGAGCAATCAAGACTGCGCAGGCCCTTGCTC
 AACTGGCAGCTCAACATTTCTCAATCTGGAAGCACTACCACCTCCTTGGGATATGGGCTCAACAACACA
 ATCACCATCACTGGTGCAGTATGATCTGAAGAGTGCAAAATGATTCAACAGTGCACAGTCTTTTACAAAG
 CGCCAGGCATTCACCCATCTTCAACCATGATGGAGGTATTCTTCAGGAGAAGCCACCTGCAGTGGCTA
 CCTCGACAGCTGCACCACCTCCCCGTCTTCTCCTCTGCCAAGCAAATCCACCTCGGCTCCACAGATGTC
 TCCGGGGTCTTCAGACAACCAGTCTCCAGCCCTCAGCCGGCTCAGCAGAACTGAAACAGCAAAAGAAG
 AAAACCTCCTTGACGTCTAAGATTCCTGCTCTGGCTGTGGAGATGCCTGGCTCAGCAGATATCTCAGGGC
 TAAATCTACAGTTTGGGGCATTGCAGTTTGGGTGAGAGCTGTCTTTCTGATTATGAGTCCACCCCCAC
 CACGAGCGCCTCCTCAAGCCAGGCTCCTAGTAGCCTGTATACCAGCACGGCCAGTGAATCTCATCTACA
 GTTTCATCTAATCAGAGTCAAGAGTCTGGTTATCAGAGTGGCCGATTCACTCGACAACCTATACCTCCC
 AAAATAATGCTCAGGGCCCTCTATATGAACAGAGATCCACACAGACGCGCGGTATCCCAGCTCCATCTC
 TTCATCACCCAAAAGGACCTGACTCAGGCTAAGAATGGTTTTAGCTCTGTGCAGGCCACGAGTTACAG
 ACCACGCAATCTGTTGAAGGTGCTACAGGCTCTGCAGTGAATCTGAATCACCTTCCACTTCTAGTATAC
 CCTCTCTCAATGAAACAGTACCTGCAGTTCCTTACTGACGACAGCCAATCAGCATTATCCTCCTTAAG
 TGGCTTGAGCCATACGGAGGAGATTCAAAATACCACCACACACAACATAGCAGTGCATTATCTACACAG
 CAGAATACCCTTTCTTCAACATCTTCTGGGCGTACTTCAACATCCACTCTTTTGATACAAGTGTGG
 AGAGTGAGGCAAATCTACATTCTCCTCCAGCACCTTCTTACCACATCCAGCACTGTCTCTGCACCTCC
 CCCAGTGGTCAGTGTCTCCTCCAGTCTGAATAGTGGCAGTGTCTGGCCTTAGCCTGGGCAGCAACTCT
 ACTGTACAGCCTCAACTCGAAGCTCAGTTGCTACAACCTCAGGAAAAGCTCCTCCAACCTTCTCCTG
 GAGTCCC GCCATTGTTGCCTAATCCATATATTATGGCTCCGGGGCTGTTACATGCCTATCCGCCACAAGT
 ATATGGTTATGATGATTTACAGATGCTCCAGACAAGATTTCCATTGGATTACTACAGTATCCCGTTTCCC
 ACACCCACCACTCCACTTACTGGGAGGGATGGTAGCCTGGCCAGCAACCTTACTCTGGCGACCTCACCA
 AATTGGCCGCGGGGATGCCTCCTCCCCAGCCCCAGCCACAACCTTGGCCCAACCCCAACAGAACCCAGAC
 GCAGACTACCACACCACGCAGCAGACATTCTGAACCCGGCGCTGCCTCCTGGCTATAGTTACACCAGC
 CTGCCATACTACAGGGGTCCCGGGCTCCCCAGCACCTTCCAGTATGGGCCTGCTGTGTTCCCTGTGG
 CTCCTACCTCTTCAAGCAGCATGGTGTGAATGTCAGTGTGAATGCCTCGGCTACCCCTTCCAACAGCC
 AAGTGGATATGGGTCTCATGGATACAACACTGGAAGAAAATATCCACCCCTTACAAGCATTCTGGACG
 GCTGAGAGC

ACGCGTACGCGGCCGCTCGAG - GFP Tag - GTTTAA

Protein Sequence: >MG218539 representing NM_001165988
Red=Cloning site Green=Tags(s)

```

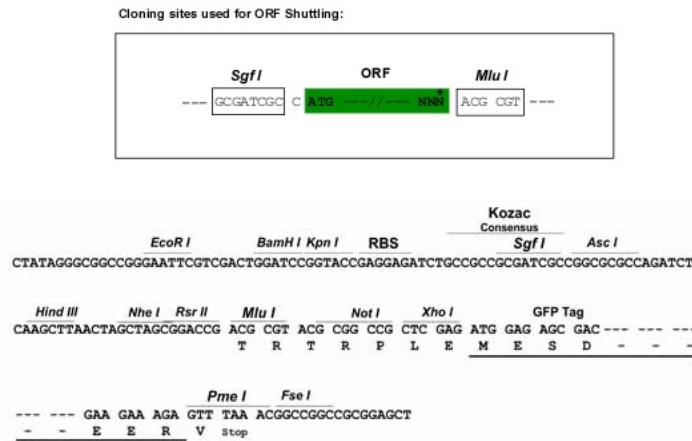
MMTSVGTNRARGNWEQPQNQNTQHKQRPQATAEQIRLAQMI SDHNDADFE EKVKQLIDITGKNQDECVI
ALHDCNGDVNRAINV LLEGNPDTHSWEMVGGKKGVSGQKDGQTESNEEGKENRDRDRDYSRRRGPPRR
GRGASRGREFRQENGLDGTKSGGPSGRGTRDRGRRGRGRGSSGRRGRFSAQGMGTFNPADYAE PANT
DDNYGNSSGNTWNNTGHFEPDDGTSAWRATAEEWGTEDWNE DLSETKIFTASNVS SVPLPAENVITAGQ
RIDLAVLLGKTPSSMENDSSNL DPSQAPSLAQPLVFSNSKQNAISQPASGSTF SHHSMVSM LGKFGDVG
EAKGGSTTGSQFLEQFKTAQALAAQHSQSGSTTTSSWDMGSTTQSPSLVQYDLK S ANDSTVHSPFTK
RQAFTPSSTMMEVFLQEKP PAVATSTAAPPPSSPLPSKSTSAPQMSPGSSDNQSSSPQAQQK LKQQKK
KTSLTSKIPALAVEMPGSADISGLNLQFGALQFGSEPVLSDYESTPTTSASSSQAPSSLYTSTASESSST
VSSNQSQESGYQSGPIQSTTYTSQNNAQGPLYEQRSTQTRRYPSSISSSPQKDLTQAKNGFSSVQATQLQ
TTQSVEGATGSAVKSESPSTSSIPSLNETVPAASLLTTANQHSSSLSGLSHTEEIPNTTTTQHSSALSTQ
QNTLSSSTSSGRTSTSTLLHTSVESEANLHSSSSTFSTTSSTVSAPPVSVSSSLNSGSSLGLSLGNSNS
TVTASTRSSVATTSGKAPPNLP PGVPPLLPNPYIMAPGLLHAYPPQVYGYDDLQMLQTRFPLDYYSIPFP
TPTTPLTGRDGLASNPYSGDLTKFGRGDASSPAPATTLAQPQQNQTTQTHHTTQQTF LNPALPPGYSYTS
LPYYTGVPGLPSTFQYGPVFPVAPTSSKQHG VNVSVNASATPFQQPSGYSGHGYNTGRKYPPPYKHFWT
AES
    
```

TRTRPLE - GFP Tag - V

Restriction Sites:

SgfI-MluI

Cloning Scheme:

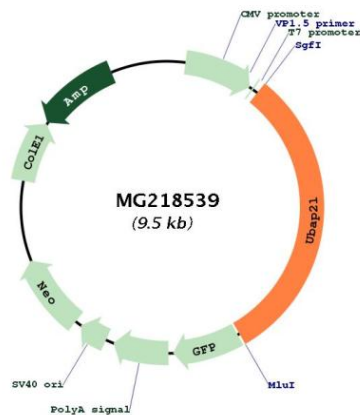


ACCN: NM_001165988

ORF Size: 2949 bp

OTI Disclaimer:	The molecular sequence of this clone aligns with the gene accession number as a point of reference only. However, individual transcript sequences of the same gene can differ through naturally occurring variations (e.g. polymorphisms), each with its own valid existence. This clone is substantially in agreement with the reference, but a complete review of all prevailing variants is recommended prior to use. More info
OTI Annotation:	This clone was engineered to express the complete ORF with an expression tag. Expression varies depending on the nature of the gene.
Components:	The ORF clone is ion-exchange column purified and shipped in a 2D barcoded Matrix tube containing 10ug of transfection-ready, dried plasmid DNA (reconstitute with 100 ul of water).
Reconstitution Method:	<ol style="list-style-type: none"> 1. Centrifuge at 5,000xg for 5min. 2. Carefully open the tube and add 100ul of sterile water to dissolve the DNA. 3. Close the tube and incubate for 10 minutes at room temperature. 4. Briefly vortex the tube and then do a quick spin (less than 5000xg) to concentrate the liquid at the bottom. 5. Store the suspended plasmid at -20°C. The DNA is stable for at least one year from date of shipping when stored at -20°C.
RefSeq:	<u>NM_001165988.1, NP_001159460.1</u>
RefSeq Size:	3627 bp
RefSeq ORF:	2952 bp
Locus ID:	74383
Cytogenetics:	3
Gene Summary:	Plays an important role in the activity of long-term repopulating hematopoietic stem cells (LT-HSCs) (PubMed:25185265).[UniProtKB/Swiss-Prot Function]

Product images:



Circular map for MG218539