

Product datasheet for **MG218514**

Lrrtm2 (NM_178005) Mouse Tagged ORF Clone

Product data:

Product Type:	Expression Plasmids
Product Name:	Lrrtm2 (NM_178005) Mouse Tagged ORF Clone
Tag:	TurboGFP
Symbol:	Lrrtm2
Synonyms:	AI851755; BB129880; C630011A14Rik; mKIAA0416
Mammalian Cell Selection:	Neomycin
Vector:	pCMV6-AC-GFP (PS100010)
E. coli Selection:	Ampicillin (100 ug/mL)



[View online »](#)

ORF Nucleotide Sequence:

>MG218514 representing NM_178005
 Red=Cloning site Blue=ORF Green=Tags(s)

TTTTGTAATACGACTCACTATAGGGCGGCCGGGAATTCGTCGACTGGATCCGGTACCGAGGAGATCTGCC
 GCC**GCGATCGCC**

ATGGGCTTACATTCAAGTGGCCATTAGGGGCCCTATGCTGGCAGCAATATATGCAATGAGTGTGGTAT
 TAAAAATGCTGCCTGCCCTGGGTATGGCGTGTCCACCTAAATGCCGCTGTGAGAAGCTGCTATTCTACTG
 CGACTCTCAGGGCTTCCACTCAGTGCCAAACGCCACAGACAAGGGTTCTTTGGGTCTGTCCCTGAGGCAC
 AATCACATCACAGCGCTTAAAGAGATCAATTTGCCAGCTTCACTCAACTCACCTGGCTCCACTTAGATC
 ACAATCAAATTTCCACAGTAAAAGAAGACGCTTCCAAGGACTGTATAAACTAAAGGAGTTAATCTTAAG
 TTCCAACAAAATATTCTACTTGCCAAACACAACTTTTACCAACTGATTAATCTGCAAAAATTTGGACCTG
 TCTTTTAATCAGCTGTCATCTCTGCATCCTGAGCTTCTATGGCCTTCGGAAGCTGCAGACCTGCATT
 TACGTTCAAACCTCCCTGCGGACTATCCAGTACGCCTGTTCTGGGACTGTCGTAGTCTAGAGTTTCTGGA
 TCTGAGCACAACCGTTTGCAGTGGCTCGAAATGGATTTGCAGGATTAATCAAACCTGAGAGAGCTT
 CATCTAGAGCACAATCAGCTGACGAAGTAAATTTTGGTCACTTCTCCGGCTAAGCAGTCTGCACACAC
 TCTTCTTACAATGGAACAAAATCAGCAACTTGACGTGTGGGATGGACTGGACCTGGAGCACTTTAGAAAA
 GCTAGACCTAACTGGAATGAAATCAAAGCCATCGACTTGACAGTGTTCGAGACCATGCCTAATCTTAAA
 ATACTTCTCATGGATAACAACAAGTTAAACAGTCTTGATTCCAAAATCTTAACTCCCTGAAATCCCTCA
 CGACCGTTGGCCTCTCTGGCAATCTGTGGGAATGCAGCCCCAGAGTGTGTGCTCTTGCCCTCTGGCTGGG
 CAGTTTCCAAGGTCGGTGGGAGCACTCCATCCTATGCCACAGCCCTGACCACACCAAGGAGAGGATATT
 CTAGATGCAGTCCACGGGTTTCACTCTGCTGGAATTTATCAACCACTGCTACTGCCATGGCTACAACCT
 ATAGAGATCCAACCACTGAATATACAAAATAAGCTCGTCGAGTTACCATGTAGGAGACAAGAAATTC
 AACTACTGCAGGCATAGCAGTCACTACAGAGGAACACTTTCCTGAACCTGACAATGCCATCTTTACTCAG
 AGAGTAATTACAGGAACATGGCTTTATTGTTTTCTTTCTTTTTATTATTTTTATAGTGTTCATTTCCA
 GGAAGTGTGCCCTCCCCTTTGAGAAGAATTAGGCAGTGTCAATGATTGAGAACCACAGGCAGCTCCG
 ATCCCAACACGACTCCATATGTCAAACATGTCAGACCAAGGACCGTATAATGAGTATGAACCCACCCAT
 GAAGGACCTTTCATCATTAATGTTATGGACAGTGAAGTGTGAGCAGCTGCCATACAAGAATGTG
 AAGTA

ACGCGTACGCGGCCGCTCGAG - GFP Tag - GTTTAA

Protein Sequence:

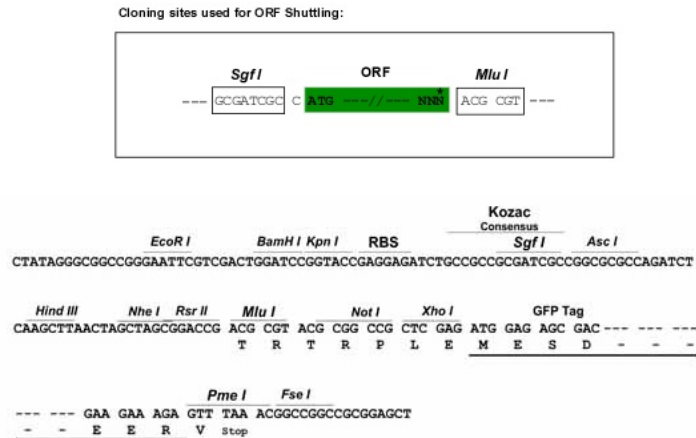
>MG218514 representing NM_178005
 Red=Cloning site Green=Tags(s)

MGLHFKWPLGAPMLAAIYAMSVLKLMLPALGMACPPKCRCEKLLFYCDSQGFHSPVNPATDKGSLGLSLRH
 NHITALERDQFASFSQLTWLHLHDHNQISTVKEDAFQGLYKLKELILSSNKIFYLPNTTFTQLINLQNLDL
 SFNQLSSLHPFLFYGLRKLQTLHLRSNSLRTIPVRLFWDRCRSEFLDLSTNRLRSLARNGFAGLIKRLREL
 HLEHNQLTKINFHFRLSSLHTLFLQWNKISNLTCGMDWTWSTLEKLDLTGNEIKAIDLTVFETMPNLK
 ILLMDNKNLNSLDSKILNSLKSLLTAVGLSGNLWECSRVCALASWLGSFQGRWEHSILCHSPDHTQGEDI
 LDAHVGFLCWNLSTTVTAMATTYRDPTEYTKISSSSYHVGDKEIPTTAGIAVTTTEHFPEPDNAIFDQ
 RVITGTMALLFSFFFIFIVFISRKCCPPTLRRIRQCSMIQNHRLRSQTRLHMSNMSDQGPYNEYEPH
 EGPFIINGYQCKCQQLPYKECEV

TRTRPLE - GFP Tag - V

Restriction Sites:

Sgfl-MluI

Cloning Scheme:


ACCN: NM_178005

ORF Size: 1545 bp

OTI Disclaimer: Due to the inherent nature of this plasmid, standard methods to replicate additional amounts of DNA in *E. coli* are highly likely to result in mutations and/or rearrangements. Therefore, OriGene does not guarantee the capability to replicate this plasmid DNA. Additional amounts of DNA can be purchased from OriGene with batch-specific, full-sequence verification at a reduced cost. Please contact our customer care team at custsupport@origene.com or by calling 301.340.3188 option 3 for pricing and delivery.

The molecular sequence of this clone aligns with the gene accession number as a point of reference only. However, individual transcript sequences of the same gene can differ through naturally occurring variations (e.g. polymorphisms), each with its own valid existence. This clone is substantially in agreement with the reference, but a complete review of all prevailing variants is recommended prior to use. [More info](#)

OTI Annotation: This clone was engineered to express the complete ORF with an expression tag. Expression varies depending on the nature of the gene.

Components: The ORF clone is ion-exchange column purified and shipped in a 2D barcoded Matrix tube containing 10ug of transfection-ready, dried plasmid DNA (reconstitute with 100 ul of water).

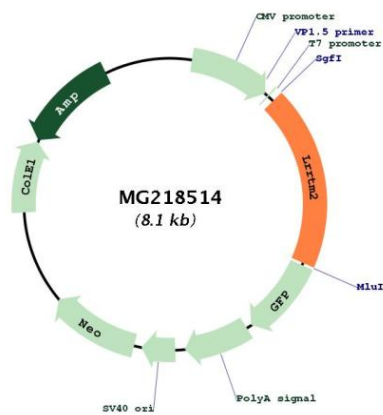
- Reconstitution Method:**
1. Centrifuge at 5,000xg for 5min.
 2. Carefully open the tube and add 100ul of sterile water to dissolve the DNA.
 3. Close the tube and incubate for 10 minutes at room temperature.
 4. Briefly vortex the tube and then do a quick spin (less than 5000xg) to concentrate the liquid at the bottom.
 5. Store the suspended plasmid at -20°C. The DNA is stable for at least one year from date of shipping when stored at -20°C.

RefSeq: [NM_178005.4, NP_821072.1](#)

RefSeq Size: 5673 bp
 RefSeq ORF: 1548 bp
 Locus ID: 107065
 UniProt ID: [Q8BGA3](#)
 Cytogenetics: 18 B1

Gene Summary: Involved in the development and maintenance of excitatory synapse in the vertebrate nervous system. Regulates surface expression of AMPA receptors and instructs the development of functional glutamate release sites. Acts as a ligand for the presynaptic receptors NRXN1-A and NRXN1-B (By similarity).[UniProtKB/Swiss-Prot Function]

Product images:



Circular map for MG218514