

Product datasheet for **MG218506**

Ubap2l (NM_001165984) Mouse Tagged ORF Clone

Product data:

Product Type:	Expression Plasmids
Product Name:	Ubap2l (NM_001165984) Mouse Tagged ORF Clone
Tag:	TurboGFP
Symbol:	Ubap2l
Synonyms:	3110083O19Rik; 4932431F02Rik; A430103N23Rik; C77168; mKIAA0144; Nice-4
Mammalian Cell Selection:	Neomycin
Vector:	pCMV6-AC-GFP (PS100010)
E. coli Selection:	Ampicillin (100 ug/mL)
ORF Nucleotide Sequence:	>MG218506 representing NM_001165984 Red=Cloning site Blue=ORF Green=Tags(s)

TTTTGTAATACGACTCACTATAGGGCGGCCGGAATTCGTCGACTGGATCCGGTACCGAGGAGATCTGCC
GCC**CGATCGCC**

ATGATGACGTCGGTGGGCACTAACCGAGCCCGGGAACTGGGAACAACCTCAAACCAAACCAGACAC
AGCACAAGCAGCGGCCACAGGCCACTGCAGAGCAAATTCGACTTGCACAGATGATTCGGACCATAATGA
TGCTGACTTTGAGGAGAAGGTGAAACAATTGATTGATATCACAGGCAAAAACCAGGATGAATGTGTGATT
GCTTTGCATGACTGCAATGGAGATGTCAACAGAGCCATCAATGTTCTCCTGGAAGGAAATCCAGACACGC
ATTCCTGGGAGATGGTTGGGAAGAAGAAAGGAGTCTCAGGACAAAAGGATGGTGGACAACTGAATCTAA
TGAAAGAAGGAAAAGAAAATCGAGACCGGGACAGAGACTATAGTCGCGCAGCTGGTGGGCCACCAAGACGG
GGGAGAGGTGCCAGCCGTGGACGAGAGTTTCGGGGCCAGGAAAATGGATTGGATGGCACCAAGAGTGGAG
GGCCTTCTGGAAGAGGCACAGACAGAGGCGAAGAGGCCGTGGCCGTGGCAGAGGTAGTTCTGGTAGGCG
AGGAGGAAGGTTTTCTGCTCAAGGAATGGGAACCTTTAACCCAGCTGATTATGCAGAGCCAGCCAACACT
GATGATAACTATGGCAATAGCAGTGGCAATACATGGAACAACACTGGCCACTTTGAACCAGATGATGGAA
CAAGACTTGATTTCAATGGGGTTGAGGGGTCAAATATCCCCGAAAATTTGAGACTGCTCCTGGTGCATG
GAGGACTGCAACAGAAGAGTGGGAACTGAAGACTGGAATGAAGATCTTTCTGAGACCAAGATCTTTACC
GCCTCTAATGTGCTTTCAGTGCCTCTGCCTGCGGAGAATGTGACAATCACTGCTGGTCAGAGAATTGACC
TTGCTGTTCTGTTGGGAAGACACCATCTTCAATGGAGAATGATTCATCTAATCTGGATCCATCTCAGGC
TCCTTCCCTGGCTCAGCCTCTGGTGTGTTAGTAATTCGAAGCAGAATGCCATATCACAGCCTGCTTAGGG
AGTACATTTTCTCACCATAGCATGGTGAGCATGTTGGGAAAGGATTTGGTGATGTTGGGGAAGCTAAAG
GTGGCAGTACAACAGGCTCCCAGTTCCTGGAGCAATCAAGACTGCGCAGGCCCTTGCTCAACTGGCAGC
TCAACATTCTCAATCTGGAAGCACTACCACCTCCTCTGGGATATGGGCTCAACAACACAATCACCATCA
CTGGTGCAGTATGATCTGAAGAGTGCAATGATTCAACAGTGCACAGTCTTTTACAAGCGCCAGGCAT
TCACCCCATCTTCAACCATGATGGAGGTATTCTTCAGGAGAAGCCACCTGCAGTGGCTACCTCGACAGC
TGACCACCTCCCCGTCTTCTCTCTGCAAGCAAATCCACCTCGGCTCCACAGATGTCTCCGGGTCT



[View online »](#)

TCAGACAACCAGTCTCCAGCCCTCAGCCGGCTCAGCAGAACTGAAACAGCAAAAGAAGAAAACCTCTCT
 TGACGTCTAAGATTCTGCTCTGGCTGTGGAGATGCCTGGCTCAGCAGATATCTCAGGGCTAAATCTACA
 GTTTGGGGCATTGCAGTTTGGGTCAGAGCCTGTCTTTCTGATTATGAGTCCACCCACCACGAGCGCC
 TCCTCAAGCCAGGCTCCTAGTAGCCTGTATACCAGCACGGCCAGTGAGTCTTATCTACAGTTTCATCTA
 ATCAGAGTCAGGAGTCTGGTTATCAGAGTGGCCGATTAGTGCACAACCTATACCTCCAAAATAATGC
 TCAGGGCCCTCTATATGAACAGAGATCCACACAGACGCGGGGATCCCAGCTCCATCTCTTCATCACC
 CAAAAGGACCTGACTCAGGCTAAGAATGGTTTTAGCTCTGTGCAGGCCACGCACTTACAGCCACGCAAT
 CTGTTGAAGGTGCTACAGGCTCTGCAGTGAATCTGAATCACCTTCCACTTCTAGTATACCTCTCTCAA
 TGAACAGTACCTGCAGCTTCTTACTGACGACAGCCAATCAGCATTTCCTCTTAAAGTGCTTGAGC
 CATAACGGAGGAGATTCCAAATACCACCACACACAACATAGCAGTGCATTATCTACACAGCAGAATACCC
 TTTCTTCAACATCTTCTGGGCTACTTCAACATCCACTCTTTTGCATAACAAGTGGAGAGTGAGGC
 AAATCTACATTCTTCTCCAGCACCTTCTTACCACATCCAGCACTGTCTCTGCACCTCCCCAGTGGTC
 AGTGTCTCTCCAGTCTGAATAGTGGCAGTGTCTGGGCTTAGCCTGGGAGCAACTCTACTGTCAGAG
 CCTCAACTCGAAGCTCAGTTGCTACAACCTCAGGAAAAGCTCCTCCCACTTCTCTGGAGTCCCGCC
 ATTGTTGCCTAATCCATATATTAGGCTCCGGGCTGTTACATGCCTATCCGCCACAAGTATATGGTTAT
 GATGATTTACAGATGCTCCAGACAAGATTTCCATTGGATTACTACAGTATCCCGTTCCACACCCACCA
 CTCCACTTACTGGGAGGGATGGTAGCCTGGCCAGCAACCCCTTACTCTGGCAGCTCACCAAAATCGGCCG
 CGGGATGCCTCTCCCCAGCCAGCCACAACCTTGGCCCAACCCCAACAGAACCAGACGAGACTCAC
 CACACCACGCAGCAGACATTCTGAACCCGGGCTGCCTCTGGCTATAGTTACACCAGCCTGCCATACT
 ACACAGGGGTCCCGGGCTCCCCAGCACCTTCCAGTATGGGCTGCTGTGTTCCCTGTGGCTCTACCTC
 TTCCAAGCAGCATGGTGTGAATGTCAGTGTGAATGCCTCGGCTACCCCTTCCAACAGCCAAGTGGAT
 GGGTCTCATGGATACAACACTGGTGTGTCAGTCACTCCAGTAAACAGGGGCTGCCAGATATACCGGTT
 CTGTGACTCCAAAACCCAGCAGTCTTTGAGAAACAAGGGTTTTCATTCCGGTACTCTGCTGCCTT
 CAACTTGCTTACGCCCTAGGAAGTGGAGGGCCATCAATCCAGCCACAGCTGCTGCTACCTGCCACCTGCC
 CCCTTTATGCATATTCTGACCCACATCAGCAGCCACTCTCAGATCCTTACCATCACCTGCAGCAGG
 ATGGCCAGACGGGAGCGGGCAACGTAGCCAGACCAGCTCCATCCCGCAGAAGCCCCAGACCAACAAGTC
 TGCCTAACACAGCTACAGCTGGGGGCCAAC

ACGCGTACGCGGCCGCTCGAG – GFP Tag – GTTTAA

Protein Sequence:

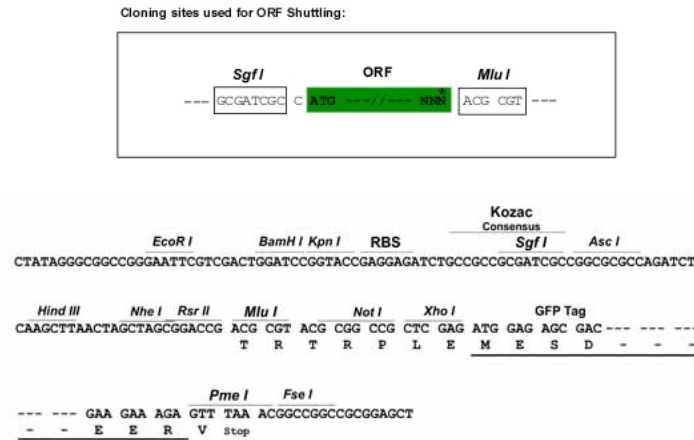
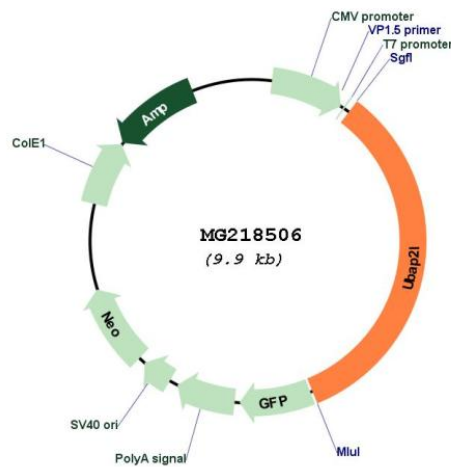
>MG218506 representing NM_001165984
 Red=Cloning site Green=Tags(s)

MMTSVGTNRARGNWEQPQNQNTQHKQRPQATAEQIRLAQMI SDHNDADFEKVKQLIDITGKNQDECVI
 ALHDCNGDVNRAINVLLLEGPNPDTHSWEMVGKKKGVSGQKDGQTESNEEGKENRDRDRDY SRRRGPPRR
 GRGASRGREFRQENGLDGTKSGGPSGRGTDGRRRRGRGRGRGSSGRRGGRF SAQMGTFNPADYAE PANT
 DDNYGNSSGNTWNNTGHFEPDDGTRLD F IGVEGSNYPRKFETAPGAWRTATEEWGTEDWNEDLSETKIFT
 ASNVSSVPLPAENVITITAGQRIDLAVLLGKTPSSMENDSSNLDP SQAPSLAQPLVFSNSKQNAISQPASG
 STF SHHSMVSM LKGFGDVGEAKGGSTTGSQFLEQFKTAQALAAQHSQSGSTTSSWDMGSTTQSPS
 LVQYDLKSANDSTVHSPFTKRQAFTPSSTMMEVFLQEKPPAVATSTAAPPPSSPLPSKSTSAPQMSPGS
 SDNQSSSPQPAQQLKQKKTSLT SKIPALAVEMPGSADISGLNLQFGALQFGSEPVLSDYESTPTTSA
 SSSQAPSSLYTSTASESSSTVSSNQSQESGYQSGPIQSTTYTSQNNAAQGPLYEQRSTQTRRYPSSISSP
 QKDLTQAKNGFSSVQATQLQTTQSVEGATGSAVKSESPSTSSIPSLNETVPAASLLTTANQHSSSLGSL
 HTEEIPNTTTTQHSSALSTQNTLSSSTSSGRTSTSTLLHTSVESEANLHSSSSTFTTSSSTVSAPPVV
 SVSSSLNSGSSLGLSLGSNSTVTASTRSSVATTSGKAPPNLP PGVPPLLPNPYIMAPGLLHAYPPQVYGY
 DDLQMLQTRFPLDYYSIPFPTTPTPLTGRDGLASNPYSGDLTKFGRGDASSPAPATTLAQPNQQTQTH
 HTTQQTFLNPALPPGYSYTS LPHYTGVPGLPSTFYGPVFPVAPTSSKQHGVNVS VNASATPFQPSGY
 GSHGYNTGVSVTSSNTGVPDISGSVYSKTQQSFEKQGFHSGTPAASFNLPSALGSGGPINPATAAAAYPPA
 PFMHILTPHQPHSQILHHHLQQDGQTGSGQRSQTSSIPQKPQTNKSAYNSYSWGAN

TRTRPLE – GFP Tag – V

Restriction Sites:

Sgfl-MluI

Cloning Scheme:

Plasmid Map:


ACCN: NM_001165984

ORF Size: 3321 bp

OTI Disclaimer: The molecular sequence of this clone aligns with the gene accession number as a point of reference only. However, individual transcript sequences of the same gene can differ through naturally occurring variations (e.g. polymorphisms), each with its own valid existence. This clone is substantially in agreement with the reference, but a complete review of all prevailing variants is recommended prior to use. [More info](#)

OTI Annotation: This clone was engineered to express the complete ORF with an expression tag. Expression varies depending on the nature of the gene.

Components:	The ORF clone is ion-exchange column purified and shipped in a 2D barcoded Matrix tube containing 10ug of transfection-ready, dried plasmid DNA (reconstitute with 100 ul of water).
Reconstitution Method:	<ol style="list-style-type: none">1. Centrifuge at 5,000xg for 5min.2. Carefully open the tube and add 100ul of sterile water to dissolve the DNA.3. Close the tube and incubate for 10 minutes at room temperature.4. Briefly vortex the tube and then do a quick spin (less than 5000xg) to concentrate the liquid at the bottom.5. Store the suspended plasmid at -20°C. The DNA is stable for at least one year from date of shipping when stored at -20°C.
RefSeq:	<u>NM_001165984.1, NP_001159456.1</u>
RefSeq Size:	4033 bp
RefSeq ORF:	3324 bp
Locus ID:	74383
UniProt ID:	<u>Q80X50</u>
Cytogenetics:	3
Gene Summary:	Plays an important role in the activity of long-term repopulating hematopoietic stem cells (LT-HSCs) (PubMed:25185265).[UniProtKB/Swiss-Prot Function]