

Product datasheet for **MG218501**

Sfmbt1 (NM_001166531) Mouse Tagged ORF Clone

Product data:

Product Type:	Expression Plasmids
Product Name:	Sfmbt1 (NM_001166531) Mouse Tagged ORF Clone
Tag:	TurboGFP
Symbol:	Sfmbt1
Synonyms:	4930442N21Rik; 9330180L21Rik; AA536974; Sfmbt; Smr
Mammalian Cell Selection:	Neomycin
Vector:	pCMV6-AC-GFP (PS100010)
E. coli Selection:	Ampicillin (100 ug/mL)



[View online »](#)

ORF Nucleotide Sequence:

>MG218501 representing NM_001166531
 Red=Cloning site Blue=ORF Green=Tags(s)

TTTTGTAATACGACTCACTATAGGGCGGCCGGGAATTCGTCGACTGGATCCGGTACCGAGGAGATCTGCC
 GCC**CGATCGCC**

ATGAGCGGGGAGCAGCAGCTTGATGCAGATCTGGGTCTGGTGTAGAAGTAGAAGAATTCAGCTGGGAAG
 ATTATCTAGAAGAGACAGGCTCCACCACAGTCCCTACGCATCGTTTAAACATGTGGATATACGTTTGCA
 AAATGGATTTGCTCCTGGGATGAAGCTGGAGGTAGCTCTGAAAAATGACCCTGAGACTTATTGGTTGCC
 ACCATCATCACCGCCTGTGAGCAGTTGCTCCTGCTTCGTTATGAAGGCTATGGGGAAGACCGAAAAGCAG
 ACTTCTGGTGTGACATCAGGAAAGCTGGCCTCTACCCATTGGGTGGTGTGAGCAGAACAAGAAGACCTT
 CGAAGCTCCAGAAGGCATCAGAGATAAAGTGTCTGATTGGAATGCATTCTACAGCAGACCCTGATAGGA
 GCCTGTGGTCTCCCGTGTCTGCTAGAGGGCCTCCGTAATGGAAGGAATCCTTTAGATCTCATTGCTC
 CAGGGTCCAACTAGAATGCCAGGATTTTCGGGACTCTTAAAGCACTGGCTTGTACTGTTGTGGAGAA
 CATTGGGGGACGGTTGAAGCTGCGGTATGAAGGCCTTGAGAGCCGTGACGTTTTGAACACTGGTTGTAT
 TACTTAGATCCATTTCTCATCACATTGGTTGGGCTGCTCAGCAAGGATGTGACCTTCAGCCCCATTAG
 CCATCAAACATCTGAAGAGTGAAGCTGACTGGCAAGAGATTTTGGCCAAAGTGAAGAGGAAGAGCCATT
 ACCCTCTACTTATTTAAGGATAAGCAAGTTATTGGAACCCATGAATTTCTATAAAACATGAAGTTGGAA
 GCTGTGGACCCGTGGTCTCCTTTGGGATTTCTCTGCAACGATTGCTAAGGTGTTTGTGATAAGTACT
 TTCTAGTGGAAATGGATGACCTTCGGCCAGAAGACCATAACAAGGCGATCATTGTGTGCCATGCTAACAG
 TCCTGGTATCTTCTGTGCAGTGGAGTCTAAAGAATGGTTTACATATCAATCCTCCTCCAGGCTCCGG
 AGCCAGGACTTTGACTGGGCCGACTACCTCAAGCAGTGTGGGGCTGAAGCTGCTCCCAGAAGTGCCTCC
 CGCAGTCAATTTCTGAGCACCAATTTAAGGAAACATGAAACTGGAGGCGAGTGAACCTCTTTTCCCTGA
 AGAAGTGTGCATTGCCACCGTTACTGCAGTGAGAGGCTCGTACCTGTGGCTCCAGCTAGAAGGTTCTAAG
 AAGCCTGTACCCGAATTTATTGTAAGTGCAGAGTGCATGAATATATTTCTTTGGGCTGGTGTGAAACCA
 ATGGCCATCCTCTCAGTACTCCTCGCCGGGCACGAGGGCATAAACTGAGGAAAATCGCAGTGGTTCAACC
 AGAAAAACAAATACTGTCTTCAAGAAGTGTCCACGAGGGCCTGAAGAATCAGCTGAACTCTACCCACTCA
 GTGATGATCAATGGAAAATACTGTTGTCCAAAGATATACTTCAACCACCGTTGCTTCTCAGGGCCATATC
 TTAATAAAGGAAGAATTGCTGAGCTGCCTCAATGTGTGGGACCTGGGAAGTGCCTTCTGGTACTTAGAGA
 GGTTCTTACTTTGCTTATCAACGCAGCATACAAACCCAGCCGCTCCTCCGTGAGCTCCAGCTGGACAAA
 GACTCTGTGTGGCACGGATGTGGGAAGTCTAAAGGCCAAATATAAAGGAAAGAGTTACCGAGCTACTG
 TTGAGATAGTGAGAACAGCAGACCGAGTACTGAATTCGCCGGCAAACATGCATCAAGCTGGAATGTTG
 TCCCAACCTCTTTGGTCCACGCATGGTTCTGGATACATGTTCTGAGAATTGCTCTGTCTTACAAAGACC
 AAATACACGCACTATTATGGAAAGAAGAAAAAAGAGAAATGGGAGGCCACCCGGTGGGCATAGTAATT
 TATCTTGTGCCCTGAAAAAAGCAGTAAGAGGAGAAAAAGGCGGAAGAATATTTTGTTCATAAGAAGAA
 GCGTCTTCTGCATCTGTTGACAATACCCCGTGGGCTCACCCAGGGAAGTGGGGTGAAGATGAGGAG
 GATGCAGATGATGGAGACGAAGACTCCCTGACTGAGGGCAGTACATCCGAGCAGCAGGAGGAGTTGCAGG
 AGGAGTCTGAGGTGTGAGAGAAAAATCTAGCTCCTCGTCTCCCACCCAGAGTGAACGCCACCCCTT
 ACCCCAGACACGCAGACCAACAAGAGAGATGCCAGACCTCCTCCGTCTCAGACGATGAAAAACAAGCCT
 CCTTACCAAAGGAAATAAGGATTGAAGTTGATGAAAGGCTTACCTGGACAGTAACCCACTGAAGTGGA
 GTGTGGCCGATGTCGTGCGGTTTCATCAGGTCCACTGACTGTGCTCCGTTGGCAAGAATATTCCTTGTATCA
 GGAAATCGACGGGACGGCCCTTTTGTCTTACCCTTCCACTGTTCAAGAGTGCATGGACTTAAAGTTG
 GGCCCCGCATCAAGCTTGGCATCACATAGAGAGAATCAAGTTTGTCTTTTATGAGCAGTTTGCCAAC

ACGCGTACGCGGGCCGCTCGAG - GFP Tag - GTTTAA

Protein Sequence: >MG218501 representing NM_001166531
 Red=Cloning site Green=Tags(s)

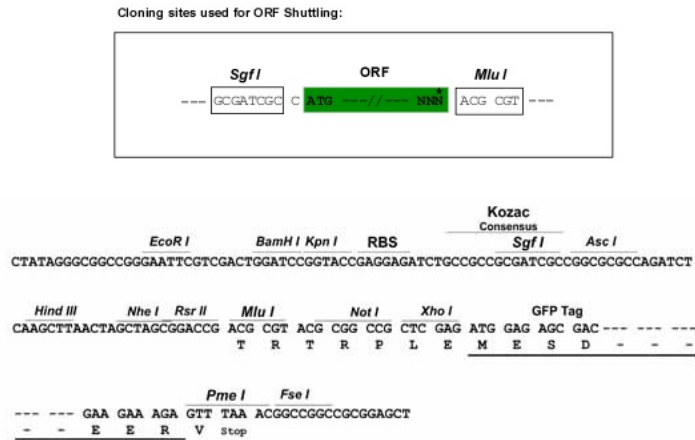
```

MSGEQQLDADLGSGVEVEEFSWEDYLEETGSTTVPYASFKHVDIRLQNGFAPGMKLEVALKNDPETYWVA
TIITACEQLLLLRYEGYGEDRKADFWCDIRKAGLYPIGWCQONKKTLEAPEGIRDKVSDFWNAFLQQTLLIG
ACGPPVSLLEGLRNGRNPLDLIAPGSKLECDFRDSLSTWLVTVVENIGGRKLRYEGLESRDGFHFWLY
YLDPFLHHIGWAAQQGCDLQPPLAIKHLKSEADWQEILAKVKEEEPLPSYLFKDKQVIGTHEFSINMKLE
AVDPWSPFGISPATIAKVFDKYLVEMDLRLPEDHTRRSFVCHANSPIFPVQWSLKNGLHINPPPGFR
SQDFDWADYLLKQCGAEAAPQKCFPQSISEHQFKENMKLEAVNPLFPEEVCIAVTAVRGSYWLQLEGSK
KPVPEFIVSAESMNIIFPLGWCETNGHPLSTPRRARGHKLKRIAVVQPEKQILSSRTVHEGLKNQLNSTHS
VMINGKYCCPKIYFNHRCFSGPYLNKGRIELPQCVGPGNCVLLREVL TLLINAAYKPSRVLRELQLDK
DSVWHGCGEVLKAKYKGSYRATVEIVRTADRVTEFCRQTCIKLECCPNLFGPRMVLDTCESENCVLTKT
KYTHYYGKKKNKRIGRPPGGHNSLSCALKKSSKRRRKRNI FVHKKRSSASVDNTPVGGSPQGGGEDEE
DADDGDEDSLTEGSTSEQEELQEESVSEKSSSSSPTQSETPTPLPPDTQTNKRDAQTSVSDDENKP
PSPKEIRIEVDERLHLSNPLKWSVADVVRFIRSTDCAPLARIFLDQEIDGQALLLTLPTVQECMDLKL
GPAIKLCHHIERIKFAFYEQFAN
  
```

TRTRPLE - GFP Tag - V

Restriction Sites: Sgfl-MluI

Cloning Scheme:



ACCN: NM_001166531

ORF Size: 2589 bp

OTI Disclaimer: The molecular sequence of this clone aligns with the gene accession number as a point of reference only. However, individual transcript sequences of the same gene can differ through naturally occurring variations (e.g. polymorphisms), each with its own valid existence. This clone is substantially in agreement with the reference, but a complete review of all prevailing variants is recommended prior to use. [More info](#)

OTI Annotation: This clone was engineered to express the complete ORF with an expression tag. Expression varies depending on the nature of the gene.

Components: The ORF clone is ion-exchange column purified and shipped in a 2D barcoded Matrix tube containing 10ug of transfection-ready, dried plasmid DNA (reconstitute with 100 ul of water).

Reconstitution Method:

1. Centrifuge at 5,000xg for 5min.
2. Carefully open the tube and add 100ul of sterile water to dissolve the DNA.
3. Close the tube and incubate for 10 minutes at room temperature.
4. Briefly vortex the tube and then do a quick spin (less than 5000xg) to concentrate the liquid at the bottom.
5. Store the suspended plasmid at -20°C. The DNA is stable for at least one year from date of shipping when stored at -20°C.

RefSeq: [NM_001166531.1](#), [NP_001160003.1](#)

RefSeq Size: 7743 bp

RefSeq ORF: 2592 bp

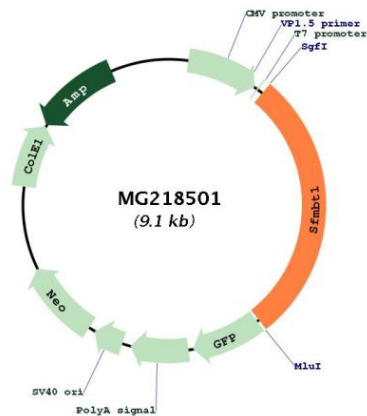
Locus ID: 54650

UniProt ID: [Q9JMD1](#)

Cytogenetics: 14 18.99 cM

Gene Summary: Histone-binding protein, which is part of various corepressor complexes. Mediates the recruitment of corepressor complexes to target genes, followed by chromatin compaction and repression of transcription. Plays a role during myogenesis: required for the maintenance of undifferentiated states of myogenic progenitor cells via interaction with MYOD1. Interaction with MYOD1 leads to the recruitment of associated corepressors and silencing of MYOD1 target genes. Part of the SLC complex in germ cells, where it may play a role during spermatogenesis.[UniProtKB/Swiss-Prot Function]

Product images:



Circular map for MG218501