

Product datasheet for **MG218491**

Prodh (NM_011172) Mouse Tagged ORF Clone

Product data:

Product Type:	Expression Plasmids
Product Name:	Prodh (NM_011172) Mouse Tagged ORF Clone
Tag:	TurboGFP
Symbol:	Prodh
Synonyms:	Pro-1; Pro1; Ym24d07
Mammalian Cell Selection:	Neomycin
Vector:	pCMV6-AC-GFP (PS100010)
E. coli Selection:	Ampicillin (100 ug/mL)



[View online »](#)

ORF Nucleotide Sequence:

>MG218491 representing NM_011172
 Red=Cloning site Blue=ORF Green=Tags(s)

TTTTGTAATACGACTCACTATAGGGCGGCCGGAATTCGTCGACTGGATCCGGTACCGAGGAGATCTGCC
 GCC**CGGATCGCC**

ATGGCTCTCAAGCGGTCTTCTTCTGCTGCGGTGCGTGGCACCACGCGTCGCTGCCCTCTCAACCAAACCGC
 AAGCCCAGGAACAGCCTCCCGCAGCCCTGAGGCTCTTCGGGATGTGGGGCGGCCAAGGCTGTGCGGCC
 GCCTGTGCCAGCGTGGACTTCACCAACACGCAGGAGGCGTATCGCAGCCGGCGGAGTTGGGAGTTGGTG
 CGCAACCTGCTAGTGCTGCGGCTGTGTGCGTCGCCGCTGCTAGCGCACACGAGCAGTTGTTCCAAG
 TTGCCAGGAAGCTTCTGGGGCAAAGGATGTTTCGAGAGATTGATGAAGATGACCTTCTATGGCCATTTTGT
 GGCTGGCAGGACCAGGAGTCTATCAGGCCTCTGATCCGGCACAACAAAGCCTTTGGTGTGGCTTTATC
 CTGGACTATGGAGTGGAGGAAGATCTGAGCCCTGAGGAGCGGAGCGCAAAGAGATGGAGTCATGCACTT
 CTGAAGCAGAGAGATGGCAGTGGAGCAAATAAGAGGGAGAAGCAGTATCAGGTGCACCCCGCCTTTGG
 AGACCGCAGAGATGGTGTATCAGTGCCTGACTTCTATGCCAATGAAGCCAAGTGTGACAACTAC
 ATGGAGAACTTACTGCAGTGCATCAAGGCCTCAGGTGGAGCCAGTATGGTGGTTTCTCAGCCATTAAGC
 TCACTGCACTGGGGAGACCACAGTTTCTGCTGCAGTTCTCAGACGTGCTGACCAGGTGGAGACGGTCTT
 CCATCAAATGGCTGCAGAGCAGGGACAGGCTGGGCGTGCTGTAGACAAAAGCTGGAGTGGCGGTG
 CTCCAGGACAGCATCGCAAAGATGGGCATCGCATCCAGGGCTGAGATTGAAGGGTGGTTCACGCCAGAGA
 CGCTGGGAGTGTCTGGCACCGTGGACTTCTGACTGGAACAGCCTCATTGACAGCAGGACCCGGCTCTC
 CAGGCACTTGGTGGTCCCAATGTGCAGACTGGCCAGCTGGAGCCCTGCTGTACGGTTCACTGAGGAG
 GAAGAGCAGCAGATGAAAAGGATGCTGCAGAGGATGGATGACTGGCCAAGAAAGCAAAGAGGCAGGTG
 TGCCGCTGATGATTGATGCTGAGCAGAGCTACTCCAACAGCCATCAGCCGCTGACCTGGAGATGCA
 CGGCAGGTTCAATGTGGATAAGCCGTTCACTTCAACACATTCCAGTGCTACCTCAAGGATGCCTATGAC
 AATGTGACCTTGATATGGAAGTGGCTCGCCGTGAGGGCTGGTGTGTTGGGGCAAAGCTGGTACGTGGTG
 CATAATGGCCAAAGAGCGTGTGAGGACAGCAGAGATCGGTTATGAGGACCCCATCAACCCTACATATGA
 AGCCACCAATGCTATGTACCACAGGTGCCTTAACTATGTTCTGGAGGAGCTGAAGCACAGCACCAGGCA
 GAGGTGATGGTGGCTTCCACAACGAGGACACCGTGCCTTACGTTGTGCAGGATGAAGGAGATAGGCC
 TGCATCCTGCTGATGGTCAAGTGTGCTTCGACAGCTGCTGGGGATGTGTACCAATCAGTCCCACT
 AGGCCAGGACGGCTTTCCTGTGTACAAGTATGTGCCCTATGGCCCTGTGATGGAGGACTCCCTTACCTG
 TCCCGCCGTGCCCTGGAGAACAGCAGCATCATGAAGGGTCTCAGCGAGAGAGGCAGCTGCTATGGCAGG
 AGCTCCGACGGCGCTGCGCACTGGCAGCCTTCCACCATCCGGCC

AG**CGGACCG**ACGCGTACGCGGCCGCTCGAG - GFP Tag - GTTTAA

Protein Sequence:

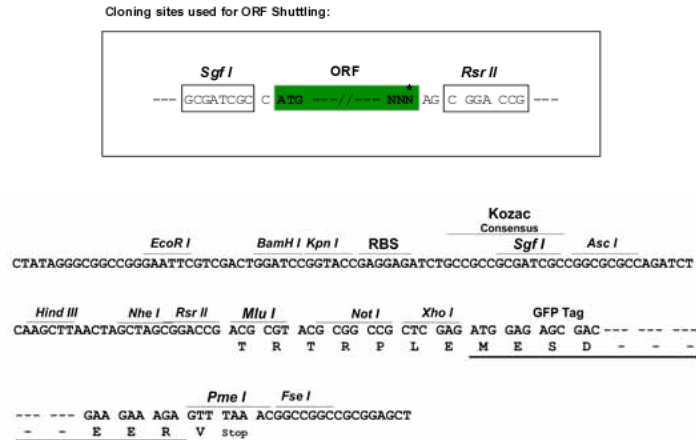
>MG218491 representing NM_011172
 Red=Cloning site Green=Tags(s)

MALKRVFLLRSVAPRVAALSTKPQAEQPPASPEALRGCGAAKAVRPPVAVDFNTQEA YRSRRSWELV
 RNLLVLRLLCASPVLLAHHEQLFQVARKLLGQRMFERLMKMTFYGHFVAGEDQESIRPLIRHNKAFVGVFI
 LDYGV EEDL SPEEAERKEMESCTSEAERDGS GANKREKQYQVHPAFGDRRDGVISARTYFYANEAKCDNY
 MENLLQCIKASGGASDGGFSAIKLTALGRPQFLQFSDVLRWRRFFHQMAAEQQQAGRAAVDTKLEVAV
 LQDSIAKMGIASRAEIEGWFTPETLGVSGTVLDDWNSLIDSRTL SRHLVVPNVQTGQLEPLL SRFTEE
 EEQOMKRMLQRMDVLA KKAKEAGVRLMIDAEQSYFQPAISRLLTEMQRRFNVDKPFIFNTFQCYLKDAYD
 NVTLDMELARREGWCFGAKLVRGAYMAQERVRAAEIGYEDPINPTYEATNAMYHRCLNLYLEELKHSTKA
 EVMVASHNEDTVHFTLCRMKEIGLHPADGQVCFQLLGMCDQISFPLGQAGFPVYKVPYGPVMEVLPYL
 SRRALENSSIMKGAQRERQLLWQELRRRLRTGSLFHHPA

SGP**TRTRRLE** - GFP Tag - V

Restriction Sites:

Sgfl-RsrII

Cloning Scheme:


ACCN: NM_011172

ORF Size: 1797 bp

OTI Disclaimer: The molecular sequence of this clone aligns with the gene accession number as a point of reference only. However, individual transcript sequences of the same gene can differ through naturally occurring variations (e.g. polymorphisms), each with its own valid existence. This clone is substantially in agreement with the reference, but a complete review of all prevailing variants is recommended prior to use. [More info](#)

OTI Annotation: This clone was engineered to express the complete ORF with an expression tag. Expression varies depending on the nature of the gene.

Components: The ORF clone is ion-exchange column purified and shipped in a 2D barcoded Matrix tube containing 10ug of transfection-ready, dried plasmid DNA (reconstitute with 100 ul of water).

Reconstitution Method:

1. Centrifuge at 5,000xg for 5min.
2. Carefully open the tube and add 100ul of sterile water to dissolve the DNA.
3. Close the tube and incubate for 10 minutes at room temperature.
4. Briefly vortex the tube and then do a quick spin (less than 5000xg) to concentrate the liquid at the bottom.
5. Store the suspended plasmid at -20°C. The DNA is stable for at least one year from date of shipping when stored at -20°C.

RefSeq: [NM_011172.2](#), [NP_035302.2](#)

RefSeq Size: 2283 bp

RefSeq ORF: 1800 bp

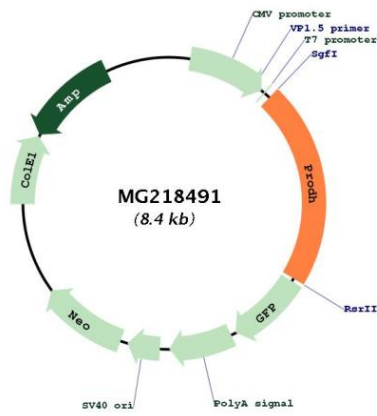
Locus ID: 19125

UniProt ID: [Q9WU79](#)

Cytogenetics: 16 11.19 cM

Gene Summary: Converts proline to delta-1-pyrroline-5-carboxylate.[UniProtKB/Swiss-Prot Function]

Product images:



Circular map for MG218491