

Product datasheet for **MG218432**

Acss3 (NM_001142804) Mouse Tagged ORF Clone

Product data:

Product Type:	Expression Plasmids
Product Name:	Acss3 (NM_001142804) Mouse Tagged ORF Clone
Tag:	TurboGFP
Symbol:	Acss3
Synonyms:	8430416H19Rik; Gm874
Mammalian Cell Selection:	Neomycin
Vector:	pCMV6-AC-GFP (PS100010)
E. coli Selection:	Ampicillin (100 ug/mL)



[View online »](#)

ORF Nucleotide
Sequence:

>MG218432 representing NM_001142804
Red=Cloning site Blue=ORF Green=Tags(s)

TTTTGTAATACGACTCACTATAGGGCGGCCGGGAATTCGTCGACTGGATCCGGTACCGAGGAGATCTGCC
GCCGCGATCGCC

ATGAAGCCATCCTGGTTGCAATGTCGCAAAGTAAACAGGCGCCGGGACGCTTGGGGCACCTCTGCCAGGAT
CCCTTCAGTAAGAGGAGCCGCTGTGACCCGAAGGGCTTTGGTGCCGGGTTGGGGCAGGGGCTGCAG
GGCTCTGACCACCGCAGTGGTGGTGAGTACAAGACCCACTTCGACGCTCTGTGGCTGACCCCGAAAGA
TTCTGGGGTAAAGCTGCTGAGCAGATCAGTTGGTACAAGCCCTGGACAAAACCTAGAGAGCAGATACC
CGCCTTCCACAAGTTGGTTTGTGGAAGGGATGCTGAACATTTGTTACAATGCTATTGATCGGCACATTGA
AAATGGCCAAAGGGGATAAGATTGCTATCATCTATGACAGTCCCGTTACAGACACCAAAGCAACTATCTCC
TATAAGGAAGTCTGGAGCAGGTCTCTAAGCTGGCTGGTGTCTTGGTCAAGCAGGGTGTCAAGAAAGGCG
ATACAGTGGTCACTATATGCCCATGATCCACAAGCAATATATACCATGCTGGCGTGTGCAAGGATAGG
AGCAATCCACAGTCTCATATTTGGAGGATTTGCATCCAAAGAATTAAGTACGCGCATTGATCATGCGAAG
CCTAAGGTGGTTGTTACGGCATCAATTTGGCATTGAACCAGGAAGGAAGGTGGAGTACATCCCACTTCTAG
AAGAAGCTCTGAGGATAGGACAGCACAGGCCAGACAGATTCTCATTACAGCCGTCCAACATGGAGAA
AGTTCTTTGATGTCAGGTGCTGATCTTGATTGGGAAGAAGAAATGGCAAAAGCCAGTCTCATGACTGC
GTGCTGTTCTCTCAGAGCATCCATTGTACATTCTCTACACATCTGGAACAACCTGGGCTGCCTAAGGGTG
TGGTTAGACCCACTGGGGCTATGCTGTCATGTTGAACTGGACAATGCTTCCATATATGGACTCAAACC
TGGAGAGGTATGGTGGGCAGCTTCTGACTTAGGCTGGGTGTTGGACATTCCTATATTTGCTATGGGCT
CTTCTCCATGGAAACACAACAGTTTTATATGAGGGAAAGCCTGTGGGAACACCGGATGCTGGCGCTTATT
TCCGTGTGCTTGCAGAGCATGGAGTGGCTGCCTTGTTTACAGCACCAACTGCAATTAGAGCCATCCGTCA
ACAGGACCCCTGGGCAGCCTTGGGAAGCAGTACTCTCTGACAAGGTTCAAGACACTGTTTGTAGCTGGG
GAAAGATGTGATGTGGAGACCCTAGAATGGTCCAAAAAAGTCTTCCGAGTCCCCTTCTAGACCATTGGT
GGCAAAACAGAGACTGGATCCCCATCACAGCATCATGTATTGGATTAGGTAACCTCAAAAACACCTCCACC
AGGACAAGCAGGAAAATGTGTTCCAGGATACAATGTTATGATTTTGGATGACAACATGCAAAAACCTGAAG
GCTAGAAGCTTAGGAAACATTGTGGTAAAGTTGCCATTACCACCTGGGGCTTTTTCAGGACTCTGGAAGA
ACCAGGAAGCATTCAAGCATTATACTTTGAGAAATTTCTGGATACTATGACACTATGGATGCCGGCTA
CATGGATGAGGAAGGCTACCTATATGTGATGTCCCGAGTGGATGATGTCATAAACGTTGCAGGCCACAGG
ATTTCTGCAGGCGCTATTGAGGAGTCAGTCTCTCACACGGCACTGTGGCTGACTGCGCTGTGGTTGGCA
AGGAAGACCCCTTGAAAGGTCAGTCCCCTTAGCACTCTGCGTGTGAAGAAAGACGTAATGCATCAGA
AGAAACAAGTTTTGGAAGAGATTGTGAAACATGTTAGGCAGAGCATTGGCCCTGTGGCTGCTTTTCGAAAT
GCGGTTTTTCGCAACAGTTACCCAAAACAGGCTGGCAAAATTCACGGTCTACACTGTCTGCCCTGG
TTAATGGCAAGCCTTATAAGGTGACCCCTACGATTGAGGACCCAGCATTTTTGGTCACATTGAAGAAGT
GCTGAAGCAGGCTGTG

ACGCGTACGCGGCCGCTCGAG - GFP Tag - GTTTAA

Protein Sequence: >MG218432 representing NM_001142804
 Red=Cloning site Green=Tags(s)

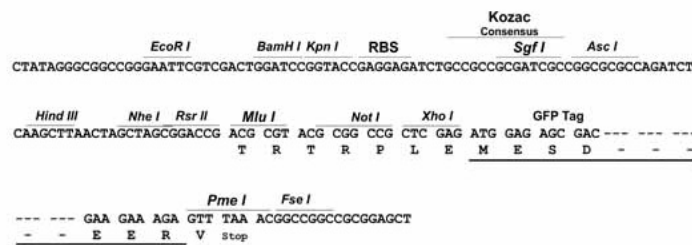
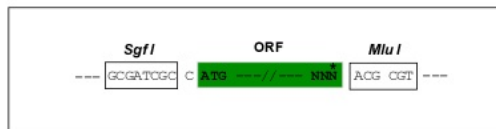
MKPSWLQCRKVTGAGTLGAPLPGSPSVRGAAVTRRALVAGFGGRGCRALTTGSGGEYKTHFAASVADPER
 FWGKAAEQISWYKPWTKTLESRYPPSTSWFVEGMLNICYNAIDRHIENGQDKIAIYDSPVTDKATIS
 YKEVLEQYSKLAGVLVKQGVKKGDTVVIYMPMIPQAIYTMACARIGAIHSLIFGGFASKELSTRIDHAK
 PKVVVTASFGEIPGRKVEYIPLLEEALRIGQHRPDRVLIYSRPNMEKVPLMSGRDLDWEEEMAKAQSHDC
 VPVLSEHPLYILYTSGTTGLPKGVRPTGGYAVMLNWTMSSIYGLKPGEVWMAASDLGWVVGHSYICYGP
 LLHGNTTVLYEGKPVGTPDAGAYFRVLAEHGVAALFTAPTAIRAIRQQDPGAALGKQYSLTRFKTLFVAG
 ERCDVETLEWSKKVFRVPLDHWWTETGSPITASCIGLNSKTPPPGQAGKCVPGYNVMILDDNMQKLLK
 ARSLGNIYVKKLPLPPGAFSGLWKNQEAFKHLYFEKFPGYDTMDAGYMDEEGLYVMSRVDVINVAGHR
 ISAGAIIEESVLSHGTVADCAVVGKEDPLKGHVPLALCVLKKDVNASEQVLEEIVKHVRQSIGPVAAFRN
 AVFVKQLPKTRSGKIPRSTLSALVNGKPYKVTPTIEDPSIFGHIEEVLKQAV

TRTRPLE - GFP Tag - V

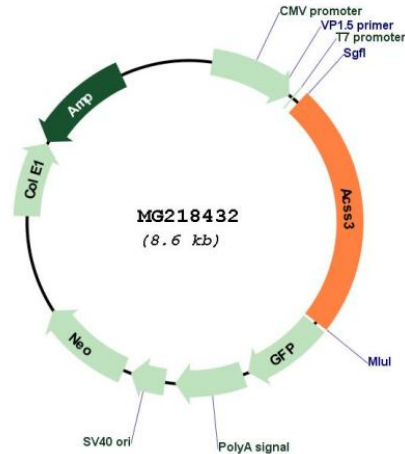
Restriction Sites: SgfI-MluI

Cloning Scheme:

Cloning sites used for ORF Shuttling:



Plasmid Map:



ACCN: NM_001142804

ORF Size: 2046 bp

OTI Disclaimer: The molecular sequence of this clone aligns with the gene accession number as a point of reference only. However, individual transcript sequences of the same gene can differ through naturally occurring variations (e.g. polymorphisms), each with its own valid existence. This clone is substantially in agreement with the reference, but a complete review of all prevailing variants is recommended prior to use. [More info](#)

OTI Annotation: This clone was engineered to express the complete ORF with an expression tag. Expression varies depending on the nature of the gene.

Components: The ORF clone is ion-exchange column purified and shipped in a 2D barcoded Matrix tube containing 10ug of transfection-ready, dried plasmid DNA (reconstitute with 100 ul of water).

Reconstitution Method:

1. Centrifuge at 5,000xg for 5min.
2. Carefully open the tube and add 100ul of sterile water to dissolve the DNA.
3. Close the tube and incubate for 10 minutes at room temperature.
4. Briefly vortex the tube and then do a quick spin (less than 5000xg) to concentrate the liquid at the bottom.
5. Store the suspended plasmid at -20°C. The DNA is stable for at least one year from date of shipping when stored at -20°C.

RefSeq: [NM_001142804.2](#)

RefSeq Size: 2130 bp

RefSeq ORF: 2049 bp
Locus ID: 380660
UniProt ID: Q14DH7
Cytogenetics: 10 D1
Gene Summary: Activates acetate so that it can be used for lipid synthesis or for energy generation.
[UniProtKB/Swiss-Prot Function]