

## Product datasheet for **MG218431**

### **Ttc39b (NM\_027238) Mouse Tagged ORF Clone**

#### **Product data:**

Product Type:	Expression Plasmids
Product Name:	Ttc39b (NM_027238) Mouse Tagged ORF Clone
Tag:	TurboGFP
Symbol:	Ttc39b
Synonyms:	1810054D07Rik; 9130422G05Rik; AI450603; AV103077; AW215585
Mammalian Cell Selection:	Neomycin
Vector:	pCMV6-AC-GFP (PS100010)
E. coli Selection:	Ampicillin (100 ug/mL)



[View online »](#)

**ORF Nucleotide Sequence:**

>MG218431 representing NM\_027238  
 Red=Cloning site Blue=ORF Green=Tags(s)

TTTTGTAATACGACTCACTATAGGGCGGCCGGAATTCGTCGACTGGATCCGGTACCGAGGAGATCTGCC  
 GCC**CGGATCGCC**

ATGGCGCTCGTGGCAGCCGAGTGAATTGGACGCGGACGAGGATATCTTTGAAGATGCCTTGGAGACCA  
 TCTCTAGATCTCCATCGGACATGGCCACCAGCGCTTTCACTTTGTACCATGCGAGACCAACCGGACCTC  
 CAGACAGCTTGGAGCATCTGCTATGGGAAGACCTGAAGGTTTCATCAGCCAAGGTGGATCTCAAGAGCGGC  
 CTGGAGGAGTGTGCAGAGGCACTGAACCTATTTCTAAGTAACAAATTTAAAGATGCCCTAGAGTTGCTAC  
 GTCCATGGGCCAAGGAGAGCATGTACCACGCTTGGGCTACAGCACCATTTGGTGTTCAGGCTGTCAT  
 GACCTTCGAGCAGCAGGACATCCAGAATGGCATCTCTGCCATGAAGGACGCTTTACAAACCTGCCAAAA  
 TACAGGAAGAAATGCACAGTTGTCGAGTCTTTCTCAAGTCTCCTTTCTCGAGGGTCCCTGGAACAACTGA  
 GTGAAGAGGAGATGCATGCTGAGATCTGTTACGCCGAGTGTCTCCTACAGAAAGCAGCACTCACATTTGT  
 GCAGGATGAAAAATGATCAACTTCATCAAAGGTGGACTCAAAATAGAACAAAGTTACCAAAATATATAAA  
 GAGTGCCTTTCCATCCTGCACGTCATTCAGAAGAACAAACAAGAGCAGCACTTCTTCTATGAGTTTGAGG  
 GAGGAGTCAAGCTTGAACGGGGCCCTTAATTTGATGCTCTCTCTTTTACCAGCAAGAATCATCCGGTT  
 ACTAGAATTTATTGGATTTCTGGAAACAGGGACCTAGGCCTTCTGCAGCTCCGGGAAGGCGCATCAGGA  
 AGCAGCATGCGGTCCCGCTCTGTTGCCTTACCATCCTGGCCTCCATACCTACATCTCCCTCATTCTCG  
 GTACAGGAGAAGTGAATGTTGTGGAAGCAGAGAGTCTCCTCGCTCCGTTCCCTTCAACAGTTCCCAATGG  
 CTCCCTCATACTTTCTATCATGCCGAATCGAGCTGCTCAAAGGGAACACTGAAAGGCTCAAGAAACA  
 TTTGAAAGTGCATTTCAAGTCAAGAAGAGTGGAAACAGTTTACCATCTCTGTTACTGGGAATTAATGT  
 GGATTCATATACCAACAAAAATGGATGCAGGCGTATTACTATTCAGACCTACTTTGCAAGAGAGATAA  
 ATGGTCCAAGGCAACATATGTGTTCTTGAAGCTGCTATTTTGGAGCATGCTTCCAGAGGAAGAGTGCCA  
 GCGACTAAGGAGAATGTGGTGTCTCTGTTTAGACAGGTGGATGGTCTGAAGCAGAGAATCGCGGGAAAT  
 CTCTCCCAACAGAGAAGTTCGCTGTGAGGAAGGCGGAGGACTCACCCCGTCAGGCGTCCCGGAAA  
 GCTGGTGTGCCAGCCCTGGAAATGATGTACGTCTGGAATGGCTTTTCAATAGTGGGAAAAAGGAAGGAC  
 CTTTCTGAAAATCTTTGGTACTGTGGAGAAGGCTGAGGAGGCATTGCAGAATCAAGACTTTACTGACT  
 ACTCTGTGGATGATGAATGCTTGGTGAATTAAGTAAAGGATGCTGCCTCAAGAAGTGGAGCGGCCCTT  
 GCAAGCTGAGCTGTTTCAACCAGTTGTGAAAGTGAAGAACTATTGAAGTACGACCACTATCTGGT  
 CCATTTACGCTGTTTGGATTGTCATTTTGTATAAAAGCCAAGGGGAAATGACAAGGCCATCAAGTCC  
 TAGAAACTGCAAGAAATAACTATAAGGATTACTCCCTGGAGTCCAGGCTACACTTCAGAATTCAGCAGC  
 TCTTCATCTCTGGAAGAAACCTCCACGGAC

**ACGCGTACGCGGCCGCTCGAG** – GFP Tag – GTTTAA

**Protein Sequence:**

>MG218431 representing NM\_027238  
 Red=Cloning site Green=Tags(s)

MALVGSRVELDADEDIFEDALETISRSPSDMATSGFHFVPCETKRTSRQLGASAMGRPEGSSAKVDLKSG  
 LEECAEALNLFSLNFKDALELLRPWAKESMYHALGYSTIVVLQAVMTFEQQDIQNGISAMKDALQTCQK  
 YRKKCTVVEFSFSLLSRGSLEQLSEEEMHAEICYAECLLQKAALTFVQDENMINFIKGGKIRTSYQIYK  
 ECLSILHVIQKNKQEQHFYEFEGGVKLTGAFNLMMLLPPARIIRLLEFIKSGNRDLGLLQLREGASG  
 SSMRSPCLCLTILAFHTYISLILGTGEVNVVEAESLLAPFLQFPNGSLILFYHARIELLKGNTKAQET  
 FRKCSVQEEWKQFHHLQWELMWIHIYQQNMWQAYYSDLLCKESKWSKATYVFLKAAILSMLPEEEVA  
 ATKENVVSLFRQVDGLKQRIAGKSLPTEKFAVRKARRYSPPSGVPGKLVMPALEMMYVWNGFSIVGKRKD  
 LSENLLVTVEKAEALQNQDFDTYSVDDECLVKLLKGCCLNLERPLQAEFCFNHVVESEKLLKYDHYLV  
 PFTLFELAFLYKSQGEIDKAIKVLETARNNYKDYSLERLHFRIQAALHLWKKPSTD

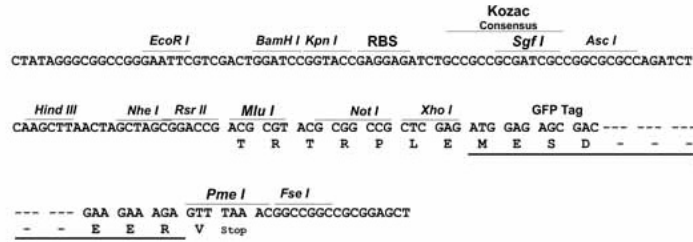
**TRTRPLE** – GFP Tag – V

**Restriction Sites:**

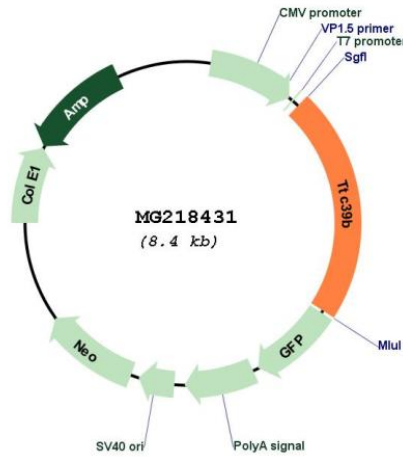
SgfI-MluI

Cloning Scheme:

Cloning sites used for ORF Shutting:



Plasmid Map:



ACCN: NM\_027238  
 ORF Size: 1851 bp

<b>OTI Disclaimer:</b>	The molecular sequence of this clone aligns with the gene accession number as a point of reference only. However, individual transcript sequences of the same gene can differ through naturally occurring variations (e.g. polymorphisms), each with its own valid existence. This clone is substantially in agreement with the reference, but a complete review of all prevailing variants is recommended prior to use. <a href="#">More info</a>
<b>OTI Annotation:</b>	This clone was engineered to express the complete ORF with an expression tag. Expression varies depending on the nature of the gene.
<b>Components:</b>	The ORF clone is ion-exchange column purified and shipped in a 2D barcoded Matrix tube containing 10ug of transfection-ready, dried plasmid DNA (reconstitute with 100 ul of water).
<b>Reconstitution Method:</b>	<ol style="list-style-type: none"><li>1. Centrifuge at 5,000xg for 5min.</li><li>2. Carefully open the tube and add 100ul of sterile water to dissolve the DNA.</li><li>3. Close the tube and incubate for 10 minutes at room temperature.</li><li>4. Briefly vortex the tube and then do a quick spin (less than 5000xg) to concentrate the liquid at the bottom.</li><li>5. Store the suspended plasmid at -20°C. The DNA is stable for at least one year from date of shipping when stored at -20°C.</li></ol>
<b>RefSeq:</b>	<a href="#">NM_027238.2</a> , <a href="#">NP_081514.1</a>
<b>RefSeq Size:</b>	8764 bp
<b>RefSeq ORF:</b>	1854 bp
<b>Locus ID:</b>	69863
<b>UniProt ID:</b>	<a href="#">Q8BYY4</a>
<b>Cytogenetics:</b>	4 C3
<b>Gene Summary:</b>	Regulates high density lipoprotein (HDL) cholesterol metabolism by promoting the ubiquitination and degradation of the oxysterols receptors LXR (NR1H2 and NR1H3). [UniProtKB/Swiss-Prot Function]