

## Product datasheet for **MG218430**

### Cd200r3 (NM\_001128132) Mouse Tagged ORF Clone

#### Product data:

Product Type:	Expression Plasmids
Product Name:	Cd200r3 (NM_001128132) Mouse Tagged ORF Clone
Tag:	TurboGFP
Symbol:	Cd200r3
Synonyms:	4733401118Rik; 4833409J19Rik; AI505817; BB106877; mCD200RLb
Mammalian Cell Selection:	Neomycin
Vector:	pCMV6-AC-GFP (PS100010)
E. coli Selection:	Ampicillin (100 ug/mL)
ORF Nucleotide Sequence:	>MG218430 representing NM_001128132 Red=Cloning site Blue=ORF Green=Tags(s)

TTTTGTAATACGACTCACTATAGGGCGGCCGGAATTCGTCGACTGGATCCGGTACCGAGGAGATCTGCC  
GCC**CGATCGCC**

ATGCATGCTTTGGGGAGGACTCTGGCTTTGATGTTACTCATCTTCATCACTATTTTGGTGCCTGAGTCAA  
GTTGTTTCAGTGAAAGGACGGGAGGAGATCCCACCGGATGATTCATTTCTTTTTCAGATGATAATATCTT  
CCCTGATGGAGTGGCGTCACCATGGAGATTGAGATTACTCCAGTGTCTGTACAGATAGGTATCAAG  
GCTCAGCTTTTCTGTCATCCTAGTCCATCAAAGAAGCAACACTAGAATATGGGAAATAACTCCCAGAG  
ACTGGCCTTCTGCAGACTACCCTACAGAGCAGAGTTCAGCAGATCAGTAAAAAATCTGTACTGAGAG  
AGGAACCACTAGGTCCTGCACATCACCAGAGTTCTGACCTCCCATCAAATCAATGGCCCTCAAGCAT  
GATGGGCATTACTCATGTTCGGATAGAAACAACAGATGGGATTTTCCAAGAGAGACATAGCATCCAAGTGC  
CAGGGGAAAAAGAACTGTAGTTTGTGAGGCAATTGCAAGCAAGCCTGCTATGCAGATCTTGTGGACTCC  
AGATGAGGACTGTGCTACTAAGAGTAAATCACACAATGACACCATGATTGTGAGGAGCAAGTGCCACAGG  
GAGAAAAACAATGGCCACAGTGTGTTCTGCTTTATCTCCATTTGACTGATAACTGGATTCTCCATGG  
AACAGAATCGAGGTACAACCAGCATCCTGCCTTCTTGTGAGCATTCTCTATGTGAAACTGGCTGTAAC  
TGTTCTCATCGTAGGATTTGCTTTTTTCCAGAAGAGAAATTTTCAGAGTGCCAGAAGGCTCC

**ACGCGT**ACGCGGCCGCTCGAG - GFP Tag - GTTTAA



[View online »](#)

**Protein Sequence:** >MG218430 representing NM\_001128132  
Red=Cloning site Green=Tags(s)

MHALGRTLALMLLIFITILVPESSCSVKGREEIPPDDSFPPFSDDNIFPDGVGVTMEIEIITPVSVQIGIK  
 AQLFCHPSPSKEATLRIWEITPRDWPSCRLPYRAELQQISKKICTERGTTTRVPAHHQSSDLPKSMALKH  
 DGHYSCRIETTDGIFQERHSIQVPGENRTVVCEAIASKPAMQILWTPDEDCVTKSKSHNDTMIVRSKCHR  
 EKNNGHSVFCFISHLTDNWILSMEQNRGTTSSILPSLLSILYVKLAVTVLIVGFAFFQKRNRYFRVPEGS

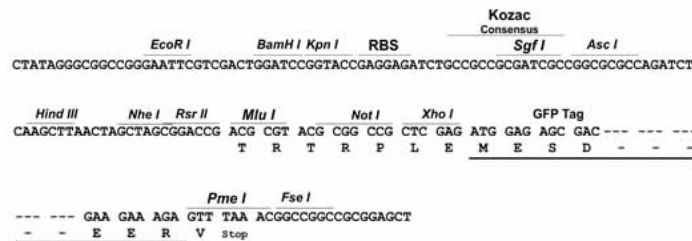
TRTRPLE - GFP Tag - V

**Chromatograms:** [https://cdn.origene.com/chromatograms/ja1712\\_a05.zip](https://cdn.origene.com/chromatograms/ja1712_a05.zip)

**Restriction Sites:** SgfI-MluI

**Cloning Scheme:**

Cloning sites used for ORF Shuttling:



**ACCN:** NM\_001128132

**ORF Size:** 834 bp

**OTI Disclaimer:** The molecular sequence of this clone aligns with the gene accession number as a point of reference only. However, individual transcript sequences of the same gene can differ through naturally occurring variations (e.g. polymorphisms), each with its own valid existence. This clone is substantially in agreement with the reference, but a complete review of all prevailing variants is recommended prior to use. [More info](#)

**OTI Annotation:** This clone was engineered to express the complete ORF with an expression tag. Expression varies depending on the nature of the gene.

**Components:** The ORF clone is ion-exchange column purified and shipped in a 2D barcoded Matrix tube containing 10ug of transfection-ready, dried plasmid DNA (reconstitute with 100 ul of water).

**Reconstitution Method:**

1. Centrifuge at 5,000xg for 5min.
2. Carefully open the tube and add 100ul of sterile water to dissolve the DNA.
3. Close the tube and incubate for 10 minutes at room temperature.
4. Briefly vortex the tube and then do a quick spin (less than 5000xg) to concentrate the liquid at the bottom.
5. Store the suspended plasmid at -20°C. The DNA is stable for at least one year from date of shipping when stored at -20°C.

**RefSeq:** [NM\\_001128132.1](#), [NP\\_001121604.1](#)

**RefSeq Size:** 1622 bp

**RefSeq ORF:** 837 bp

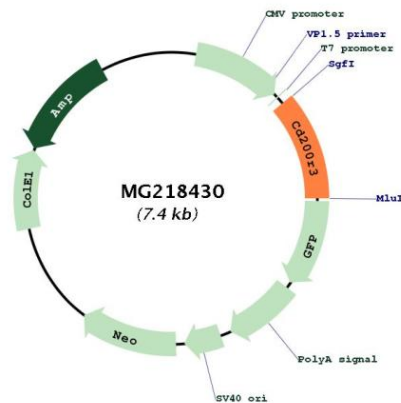
**Locus ID:** 74603

**UniProt ID:** [Q5UKY4](#)

**Cytogenetics:** 16 B4- B5

**Gene Summary:** According to PubMed:15187158 isoform 4 is a receptor for the CD200 cell surface glycoprotein. According to PubMed:16081818 isoform 4 is not a receptor for the CD200/OX2 cell surface glycoprotein. Isoform 1, isoform 2 and isoform 3 are involved in the recruitment or surface expression of the TYROBP receptor. Isoform 6, isoform 7 and isoform 8 are not involved in the recruitment or surface expression of the TYROBP receptor.[UniProtKB/Swiss-Prot Function]

## Product images:



Circular map for MG218430