

## Product datasheet for **MG218421**

### **Rab11fip5 (NM\_177466) Mouse Tagged ORF Clone**

#### **Product data:**

Product Type:	Expression Plasmids
Product Name:	Rab11fip5 (NM_177466) Mouse Tagged ORF Clone
Tag:	TurboGFP
Symbol:	Rab11fip5
Synonyms:	9130206P09Rik; C75969; D6Ertd32e; GAF1; RIP11
Mammalian Cell Selection:	Neomycin
Vector:	pCMV6-AC-GFP (PS100010)
E. coli Selection:	Ampicillin (100 ug/mL)



[View online »](#)

**ORF Nucleotide Sequence:**

>MG218421 representing NM\_177466  
 Red=Cloning site Blue=ORF Green=Tags(s)

TTTTGTAATACGACTCACTATAGGGCGGCCGGGAATTCGTCGACTGGATCCGGTACCGAGGAGATCTGCC  
 GCC**CGGATCGCC**

ATGGCTCTGGTGCGGGACCTGAGCCGGCGCCGGATCCTCCCGTGGCTGCCACGCATGTCCAGGTGA  
 CCGTGCTCGGGCCAGCGGGTTGAGGGCAAGAGCTCGGGCGCCGACAGACCAGCGACCGGTACACGGT  
 GATCCAGGTGGGCCGAGAGAAGTACAGCACCTCGGTAGTGGAGAAGACGCAAGGCTGCCCGAATGGTGC  
 GAAGAGTGTTCGTTTCGAGCTACCGCCTGGAGCCCTGGACGGCCTGCTCGGGGACAGGAGGCAGATGCGG  
 GCCCTGCGCCCTGGGCTCCGGCCCCAACCGCCCTGCGAGCTCGTGCTCACCACCATGCATCGCTCACT  
 CATCGCGTGGACAAGTTTCTGGGCCGGCAACCGTAGCTCTGGACGAGGTCTTCCGCGCAGGCCGCGCC  
 CAGCACACGCAGTGGTACAGGCTTCACTCCAAGCCAGGCAAGAAGGAGAAGGAGCGCGGTGAGATCCAGG  
 TGACCATCAGTTCACACGGAACAACCTGAGCGCCAGCATGTTTGTATCTTCCATGAAGGACAAGCCACG  
 GTCTCCCTCAGCAAGCTCAAGGACAGAGTGAAGGGCAAGAAGAAGTATGATCTCGAATCTGCCTCAGCG  
 ATTCTTCCAAGCAGCGCCCTGGAGGATCCTGAGTTAGGCAGCCTGGGCAAGATGGGCAAAGCCAAAGGTT  
 TCTTCTCCGAAACAAGCTACGCAAGTCTCGCTCACACAGTCTAACACCTCTCTGGGCTCTGACAGCAC  
 CTTGTCTTCCACTAGTGGCAGCCTGGTCTACCAGGGACCCGGGGCGGAGCTCCTCACCCGCTCACCAAGC  
 CACAGCAGCTGGCTGTCCACTGAAGGGGTAGGGACTCTATACAGTCCCCAAGCTGCTCACCCACAAGA  
 GGACATACAGTGTAGAGCCAGCCAGCTTCGAGCAGCTCCTCCCCGGGCCCTTCTTGAGCTCCAAGGCCA  
 CCTTGATGGTGCCTCCGCTCTTCCCTCGCTCAATGGGAGCCATGTGTACAATGAGGAACCTCAGCCC  
 CCCTTACGGCACCGCAGCTCCATCTCAGGCCCTTCCACCTCAAGCTCCTTACACAGTGTCCCACCTC  
 GGTCTCTGAGGAGGGTCTCGGTCTCGGATGATTCTTGGGGCAGAGGCAGCCATGGCACCAGCAGCTC  
 AGAGGCAGTGCCTGGACAGGAGGAGCTGAGCAAGCAGGCCAAAGGGGCCAGTTGCTCTGGAGAGGAGGAG  
 GGGGCCGGTTACCCGAGGGGAAGCCAGTCCAGTTGCCACCCCATGGTGGCCTCCTCTGAGGCTGTGG  
 CAGCAGAAAAGGATCGGAAGCCCCGAATGGGGCTTCCATCACACCACCACCAAGGGCTGAGTCGGAG  
 TGAGCAGGGGCGCGTGGCTCAGTCGGGGAGAAGGGGAGTCCGTCCTGGGAGCCTCCCCCACCATTCA  
 TCCACCGGGGAGGAAAAGCCAAGAGTACTGTTTGGCCTGAGAGAATCCAAGGAGCCAACCTCAGAAGC  
 CCAGTCCCCACCCTGTGAAACCCCTTACTGCTGCCCTGTGGAGGCTAGCCCCGACAGGAAACAGCCCCG  
 TACCAGCCTGAGCACAGCCCTGAGTAGCGGACTGGAGAGGCTCAAACTGTCACATCTGGTGGCATCCAG  
 TCTGTGCTTCCAGCGTCCAGCTTGGCTCAAGTGTGGACACCAAGAGGCCAAAGGATTCTGCTGTGCTGG  
 ACCAGTCCGGCAAGTACTATCACCTGACTCATGATGAGCTCATTGGCCTGCTCCTGCAGCGTGAGCGTGA  
 GCTGAGCCAGAGACGAGCATGTGCAAGAAGTGGAGAGCTACATTGACCGGCTGCTGGTGGGATCATG  
 GAGACCTCGCCACACTGCTGCAAACTCTCCCTGGCCCCCAAG

AG**CGGACCG**ACGCGTACGCGGCCGCTCGAG – GFP Tag – GTTTAA

**Protein Sequence:**

>MG218421 representing NM\_177466  
 Red=Cloning site Green=Tags(s)

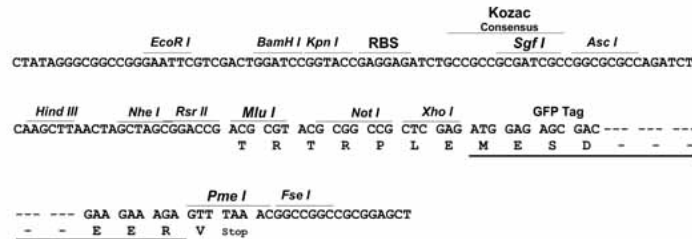
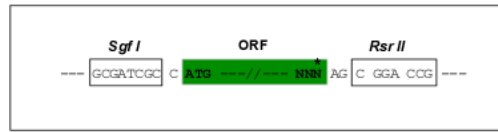
MALVRDPEPAAGSSRWLPTHVQVTVLRASGLRGKSSGAGSTSDAYTVIQVGREKYSTSVVEKTQGCPEWC  
 EECSEFELPPGALDGLLRAQEADAGPAPWASGPNAACELVLTMMHRSLIGVDKFLGRATVALDEVFRAGRA  
 QHTQWYRLHSKPKGKKEKERGEIQVTIQFTRNNLSASMFDSLMDKPRSPFSKLDKRVKGGKKYDLESASA  
 ILPSSALEDPGLSLGKMGKAKGFFLRNKLKSSLTQSNTSLGSDSTLSSTSGSLVYQGPGAELLTRSPS  
 HSSWLSTEGGRDSIQSPKLLTHKRTYSDEASQLRAAPPRALLELQGHLDGASRSSLVNGSHVYNEEPQP  
 PLRHRSSISGPFPPSSSLHSVPPRSSEEGSRSSDSDSWGRGSHGTSSEAVPGQEELSKQAKGASCSGEEE  
 GARLPEGKPVQVATPMVASSEAVAAEKDRKPRMGLFHHHHHQGLSRSEQRRRGSVGEKGPSLGPSPHS  
 STGEEKAKSSWFLRESKEPTQKPSHPVKPLTAAPVEASPRDKQPRSLSTALSSGLERLKTVTSGGIQ  
 SVLPASQLGSSVDTKRPKDSAVLDQSAKYHYLTHDELIGLLLQRERELQRDEHVQELESYIDRLLVRIM  
 ETSPTLLQISPGPPK

SGP**TRRRLE** – GFP Tag – V

Restriction Sites: SgfI-RsrII

Cloning Scheme:

Cloning sites used for ORF Shuttling:



ACCN: NM\_177466

ORF Size: 1935 bp

OTI Disclaimer: The molecular sequence of this clone aligns with the gene accession number as a point of reference only. However, individual transcript sequences of the same gene can differ through naturally occurring variations (e.g. polymorphisms), each with its own valid existence. This clone is substantially in agreement with the reference, but a complete review of all prevailing variants is recommended prior to use. [More info](#)

OTI Annotation: This clone was engineered to express the complete ORF with an expression tag. Expression varies depending on the nature of the gene.

Components: The ORF clone is ion-exchange column purified and shipped in a 2D barcoded Matrix tube containing 10ug of transfection-ready, dried plasmid DNA (reconstitute with 100 ul of water).

Reconstitution Method:

1. Centrifuge at 5,000xg for 5min.
2. Carefully open the tube and add 100ul of sterile water to dissolve the DNA.
3. Close the tube and incubate for 10 minutes at room temperature.
4. Briefly vortex the tube and then do a quick spin (less than 5000xg) to concentrate the liquid at the bottom.
5. Store the suspended plasmid at -20°C. The DNA is stable for at least one year from date of shipping when stored at -20°C.

RefSeq: [NM\\_177466.4](#), [NP\\_803417.3](#)

RefSeq Size: 4137 bp

RefSeq ORF: 1938 bp

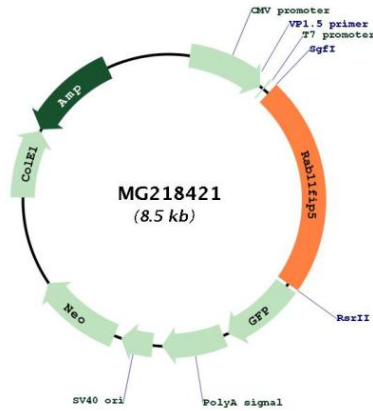
Locus ID: 52055

UniProt ID: [Q8R361](#)

Cytogenetics: 6 37.35 cM

Gene Summary: Rab effector involved in protein trafficking from apical recycling endosomes to the apical plasma membrane. Involved in insulin granule exocytosis. May regulate V-ATPase intracellular transport in response to extracellular acidosis.[UniProtKB/Swiss-Prot Function]

**Product images:**



Circular map for MG218421