

Product datasheet for **MG218407**

Gtf2e2 (NM_001167921) Mouse Tagged ORF Clone

Product data:

Product Type:	Expression Plasmids
Product Name:	Gtf2e2 (NM_001167921) Mouse Tagged ORF Clone
Tag:	TurboGFP
Symbol:	Gtf2e2
Synonyms:	34kDa; AI462509; C330006J08Rik
Mammalian Cell Selection:	Neomycin
Vector:	pCMV6-AC-GFP (PS100010)
E. coli Selection:	Ampicillin (100 ug/mL)
ORF Nucleotide Sequence:	>MG218407 representing NM_001167921 Red=Cloning site Blue=ORF Green=Tags(s)

TTTTGTAATACGACTCACTATAGGGCGGCCGGAATTCGTCGACTGGATCCGGTACCGAGGAGATCTGCC
GCC**CGATCGC**C

ATGGATCCAAGCCTATTGAGAGATCGAGAGCTGTTCAAAAAACGAGCTCTTCCACTCCTGTGGTAGAAA
AACGTGCTGTGCCTTCTGAGTCACCCCTCCTCCTCATCCAAGAAGAAGAAGGCAAAAGTCGAACATGG
AGGATCCTCAGGCTCTAAACAAAATTCAGATCATAACAATGGATCATTTAACTTGAAAGCTCTGTCTGGA
AGCTCTGGATATAAGTTCGGTGTCTTGTCTAAGATTGTGAATTATGAAAACACGACATCAGCGGGGAG
ATACACATCCTCTAACGTTGGAAGAGATTCTGGATGAGACACAGCACTTAGACATCGGACTCAAGCAGAA
ACAGTGGCTGATGACGGAGGCTTTAGTCAACAATCCTAAAATTGAAGTAGTGGATGGGAAATATGCCTTC
AAACCTAAGTACAACCTTGAAAGATAAGAAGGCCCTGCTTAGGCTTTTAGACAATCATGACCAGCGGGGAC
TAGGAGGAATTCTCTTAGAAGACATAGAAGAGGGACTGCCTAATCCCAGAAAAGCTGTCAAGGCTTTAGG
GGACCAGATACTATTTGTAAGTCGTCCTGATAAGAAGAAAATACTATTCTTCAATGATAAAAAGCTGTGAG
TTTTCTGTGGATGAAGAATTCAGAAAATGTGGAGGAGTGTCACTGTGGATTCAATGGATGAGGAGAAAA
TTGAAGAGTATCTGAAGCGACAGGGTATTTCTTCATGCAGGAATCTGGACCAAGAAAGTGGCCTCTAT
TCAGAGAAGGAAAAAGCCTGCTTCACAGAAAAAGCGACGGTTTAAGACTACAATGAACACTTGGCTGGA
GTGCTGAAGGATTACTCGGACATTACCCGGGCAAA

ACGCGTACGCGGCCGCTCGAG - GFP Tag - GTTTAA



[View online »](#)

Protein Sequence: >MG218407 representing NM_001167921
 Red=Cloning site Green=Tags(s)

MDPSLLRDRELFKKRALSTPVVEKRAVPSESPSSSSSKKKKAKVEHGGSSGSKQNSDHNNGSFNLKALSG
 SSGYKFGVLAKIVNYMKTRHQGDTHPLLEEILDDETQHLDIGLKQKQWLMEALVNNPKIEVVDGKYAF
 KPKYNLKDKKALLRLLDNHDQRGLGGILLEDIEEGLPNSQKAVKALGDQILFVSRPDKKILFFNDKSCQ
 FSVDEEFQKLWRSYTVDSMDEEKIEEYLKRQGISMQESGPKKVASIQRRKKPASQKRRFKTHNEHLAG
 VLKDYSIDITPGK

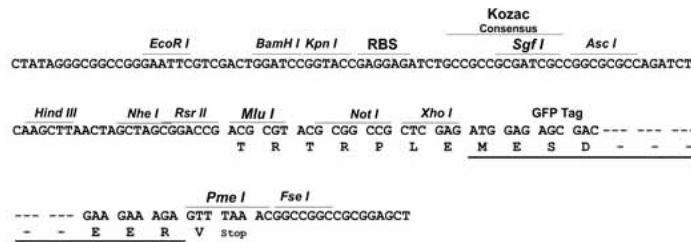
TRTRPLE - GFP Tag - V

Restriction Sites:

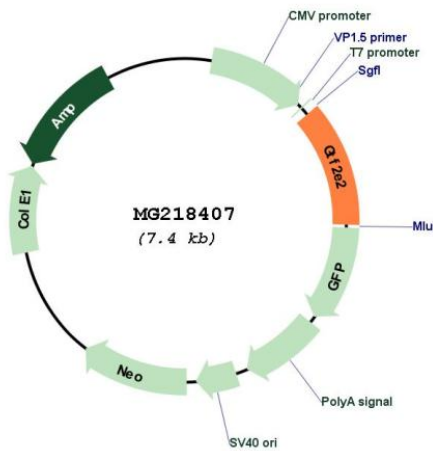
Sgfl-MluI

Cloning Scheme:

Cloning sites used for ORF Shuttling:



Plasmid Map:



ACCN: NM_001167921

ORF Size: 876 bp

OTI Disclaimer:	The molecular sequence of this clone aligns with the gene accession number as a point of reference only. However, individual transcript sequences of the same gene can differ through naturally occurring variations (e.g. polymorphisms), each with its own valid existence. This clone is substantially in agreement with the reference, but a complete review of all prevailing variants is recommended prior to use. More info
OTI Annotation:	This clone was engineered to express the complete ORF with an expression tag. Expression varies depending on the nature of the gene.
Components:	The ORF clone is ion-exchange column purified and shipped in a 2D barcoded Matrix tube containing 10ug of transfection-ready, dried plasmid DNA (reconstitute with 100 ul of water).
Reconstitution Method:	<ol style="list-style-type: none">1. Centrifuge at 5,000xg for 5min.2. Carefully open the tube and add 100ul of sterile water to dissolve the DNA.3. Close the tube and incubate for 10 minutes at room temperature.4. Briefly vortex the tube and then do a quick spin (less than 5000xg) to concentrate the liquid at the bottom.5. Store the suspended plasmid at -20°C. The DNA is stable for at least one year from date of shipping when stored at -20°C.
RefSeq:	NM_001167921.1 , NP_001161393.1
RefSeq Size:	1562 bp
RefSeq ORF:	879 bp
Locus ID:	68153
UniProt ID:	Q9D902
Cytogenetics:	8 A4
Gene Summary:	Recruits TFIIH to the initiation complex and stimulates the RNA polymerase II C-terminal domain kinase and DNA-dependent ATPase activities of TFIIH. Both TFIIH and TFII E are required for promoter clearance by RNA polymerase (By similarity).[UniProtKB/Swiss-Prot Function]