

Product datasheet for **MG218366**

PPP2R1A (NM_016891) Mouse Tagged ORF Clone

Product data:

Product Type:	Expression Plasmids
Product Name:	PPP2R1A (NM_016891) Mouse Tagged ORF Clone
Tag:	TurboGFP
Symbol:	PPP2R1A
Synonyms:	6330556D22Rik; PP2A; PR65
Mammalian Cell Selection:	Neomycin
Vector:	pCMV6-AC-GFP (PS100010)
E. coli Selection:	Ampicillin (100 ug/mL)



[View online »](#)

ORF Nucleotide Sequence:

>MG218366 representing NM_016891
 Red=Cloning site Blue=ORF Green=Tags(s)

TTTTGTAATACGACTCACTATAGGGCGGCCGGAATTCGTCGACTGGATCCGGTACCGAGGAGATCTGCC
 GCCGCGATCGCC

ATGGCAGCTGCCGACGGTGACGATTCGCTCTATCCTATTGCGGTGCTCATAGATGAACTCCGCAATGAGG
 ACGTTTCAGCTTCGCTCAATAGTATCAAGAAGCTCCACAATTGCCTTGCCCTTGGGGTTGAACGGAC
 CAGAAGTGAGCTCCTGCCCTTCCTTACAGATACCATTTATGATGAAGATGAGGTCCTCTTGGCCTTGGCT
 GAACAGCTGGGAACCTTCACAACTTTGGTGGGAGGGCCTGAGTATGTGCACTGTCTGCTGCCACCCCTTG
 AGTCACTGGCCACAGTGAAGAGACAGTACGAGACAAGGCGGTAGAATCCTTGGGGCCATCTCTCA
 TGAGCACTCACCTCCGATCTAGAGGCTCACTTTGTGCCTCTGGTAAAGCGGCTGGCGGGTGAGACTGG
 TTCACCTCCCGCACCTCGGCCTGTGGTCTCTTCTCAGTTTGTACCCCGAGTATCCAGTGCCGTGAAGG
 CAGAACTTCGACAGTACTCCGGAACCTGTGCTCAGATGACACCCCATGGTGGCGGGGCCGCTGCCTC
 CAAGCTGGGGGAATTTGCCAAGTACTGGAGCTGGACAATGTCAAGAGTGAGATCATTCCATGTTCTCT
 AACCTGGCCTCTGACGAGCAGGACTCGGTGCGGCTGCTGGCAGTGAGGCATGTGTGAATATTGCCCAGC
 TTCTGCCACAGGAGGACCTGGAGGCCTTAGTGATGCCACCTTGCACAGGCTGTGAGGACAAGTCTTG
 GCGTGTTCGCTACATGGTGGCCGACAAGTTCACAGAGCTCCAGAAAGCAGTGGGGCTGAGATCACCAAG
 ACAGATCTGGTGCCTGCCTTCCAGAACCTGATGAAGGACTGTGAGGCGGAGGTGAGGGCCGACGCTCCC
 ACAAGGTCAAAGATTCTGTGAAAATCTCTCAGCTGACTGCCGGGAGAATGTGATCATGACTCAGATCTT
 GCCCTGCATCAAGGAACCTGTGTGATGCAACCAACATGTCAAGTCAGCACTGGCTTCAGTCATCATG
 GGCCTCTCTCCATTCTGGGCAAAGACAACACCATCGAACACCTTTGCCCTGTTCTTGGCTCAGCTGA
 AGGATGAGTGTCTGAAGTCCGACTGAATATCATCTCCAACCTGGATTGTGTGAACGAGGTGATTGGCAT
 CAGGCAGCTCTCTCAGTCCCTGCTTCTGCCATCGTGGAAGTGAAGATGCCAAGTGGCGAGTGGCGG
 CTGGCCATCATTGAATACATGCCTCTGCTGGTGGACAGCTTGGTGTGGAATTTTTTATGAGAACTAA
 ACTCTTTGTGATGGCCTGGCTAGTGGATCATGTCTATGCTATCCGTGAGGCTGCCACCAGCAACCTTAA
 GAAATTAGTAGAGAAGTTCGGAAGGAGTGGGCCATGCCACTATCATCCCAAGGTCTTAGCCATGTCT
 GGAGACCTAACTACCTGCACCGAATGACTACACTCTTCTGCATCAATGTGTTGTCTGAGGTCTGTGGAC
 AGGATATACCACCAAGCACATGCTGCCACAGTTCTTCGTATGGCAGGGGACCCAGTTGCCAATGTCCG
 CTTCAATGTGGCCAAGTCACTCCAGAAGATAGGACCCATTCTTGATAACAGCACCTGCAGAGTGAAGTC
 AAGCCCATCTGGAGAAGCTGACCCAGGACCAGGATGTGGATGTCAAGTACTTTGCCAGGAGGCTCTGA
 CTGTTCTCTCTTGCC

ACGCGTACGCGGCCGCTCGAG - GFP Tag - GTTTAA

Protein Sequence:

>MG218366 representing NM_016891
 Red=Cloning site Green=Tags(s)

MAAADGDDSLYPIAVLIDELRNEDVQLRLNSIKKLSIALALGVERTRSELLPFLTDIYDEDEVLLALA
 EQLGTFFTLVGGPEYVHCLLPPLLESLATVEETVVRDKAVESLRAISHEHSPSDLEAHFVPLVKRLAGGDW
 FTSRTSACGLFSVCYPRVSSAVKAELRQYFRNLCSDDTPMVRRAAASKLGEFAKVLELDNVKSEIIPMFS
 NLASDEQDSVRLLAVEACVNIAQLLPQEDLEALVMPTLRQAAEDKSWRVRYMVADKFTLQKAVGPEITK
 TDLVPAFQNLKMDCEAEVRAAASHKVKEFCENLSADCRENVIMTQILPCIKELVSDANQHVKASALASVIM
 GLSPIILGKDNTIEHLLPLFLAQLKDECPEVRLNIISNLDCVNEVIGIRQLSQSLLPAIVELAEDAKWRVR
 LAIEIEMPLLAGQLGVEFFDEKLNLSLMAWLVDHVYAIREAATSNLKKLVEKFGKEWAHATIIPKVLAMS
 GDPNYLHRMTTLFCINVLSEVCGQDITTKHMLPTVLRMAGDPVANVRFVAKSLQKIGPILDNSTLQSEV
 KPILKLTQDQDQVDVYKFAQEALTVLSLA

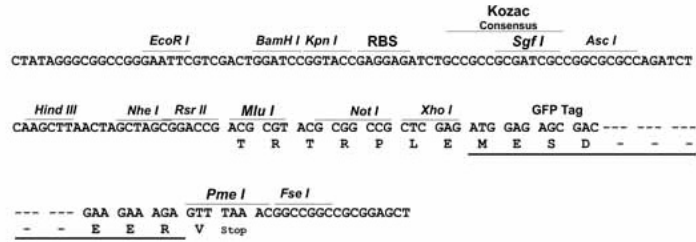
TRTRPLE - GFP Tag - V

Restriction Sites:

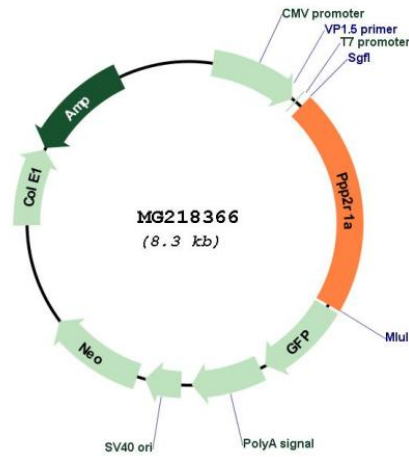
SgfI-MluI

Cloning Scheme:

Cloning sites used for ORF Shutting:



Plasmid Map:



ACCN: NM_016891

ORF Size: 1767 bp

OTI Disclaimer:	The molecular sequence of this clone aligns with the gene accession number as a point of reference only. However, individual transcript sequences of the same gene can differ through naturally occurring variations (e.g. polymorphisms), each with its own valid existence. This clone is substantially in agreement with the reference, but a complete review of all prevailing variants is recommended prior to use. More info
OTI Annotation:	This clone was engineered to express the complete ORF with an expression tag. Expression varies depending on the nature of the gene.
Components:	The ORF clone is ion-exchange column purified and shipped in a 2D barcoded Matrix tube containing 10ug of transfection-ready, dried plasmid DNA (reconstitute with 100 ul of water).
Reconstitution Method:	<ol style="list-style-type: none">1. Centrifuge at 5,000xg for 5min.2. Carefully open the tube and add 100ul of sterile water to dissolve the DNA.3. Close the tube and incubate for 10 minutes at room temperature.4. Briefly vortex the tube and then do a quick spin (less than 5000xg) to concentrate the liquid at the bottom.5. Store the suspended plasmid at -20°C. The DNA is stable for at least one year from date of shipping when stored at -20°C.
RefSeq:	NM_016891.2
RefSeq Size:	2256 bp
RefSeq ORF:	1770 bp
Locus ID:	51792
UniProt ID:	Q76MZ3
Cytogenetics:	17 A3.2
Gene Summary:	The PR65 subunit of protein phosphatase 2A serves as a scaffolding molecule to coordinate the assembly of the catalytic subunit and a variable regulatory B subunit (PubMed:10100624). Upon interaction with GNA12 promotes dephosphorylation of microtubule associated protein TAU/MAPT (By similarity). Required for proper chromosome segregation and for centromeric localization of SGO1 in mitosis (By similarity).[UniProtKB/Swiss-Prot Function]