

Product datasheet for **MG218357**

Samd4 (NM_028966) Mouse Tagged ORF Clone

Product data:

Product Type:	Expression Plasmids
Product Name:	Samd4 (NM_028966) Mouse Tagged ORF Clone
Tag:	TurboGFP
Symbol:	Samd4
Synonyms:	1700024G08Rik; 1700111L17Rik; 4933436G17Rik; Samd4a; Smaug; Smaug1; sunk
Mammalian Cell Selection:	Neomycin
Vector:	pCMV6-AC-GFP (PS100010)
E. coli Selection:	Ampicillin (100 ug/mL)



[View online »](#)

ORF Nucleotide Sequence:

>MG218357 representing NM_028966
 Red=Cloning site Blue=ORF Green=Tags(s)

TTTTGTAATACGACTCACTATAGGGCGGCCGGGAATTCGTCGACTGGATCCGGTACCGAGGAGATCTGCC
 GCC**CGGATCGCC**

ATGATGTTTCGCGACCAGGTGCGGGTGTGGCGGGCTGGTTAAAGGGCTGGAACGAGTGCAGCAGACTG
 TTGCACTGCTGTCGCTGCTCAAGCGCGTAAGCCAGACCCAGGCCCGCTTCCTTCAGCTCTGCCTGGAGCA
 CTCGCTGGCCGACTGCGCCGAGCTGCACGTCCTGGAAGGAGAGGCCAACAGCCCGGAATCATTAACCAA
 TGGCAACAGGAATCCAAGGATAAAGTGATTTCCCTTCTGCTAACTCACCTGCCTTTGCTGAAGCCAGGAA
 ACCTCGACGCGAAAGCAGAGTATATGAACTGCTGCCAAGATCCTGGCACACTCTATCGAACACAACCA
 GCACATTGAGGAGAGCAGGCAGCTGCTGTCTATGCTTTGATCCACCCAGCCACTTCTTGAAGACCGC
 AGCGCACTAGCCATGTGGCTGAATCACTTGAGGACCGCACATCCACCAGCTTTGGTAGCCAGAACCAG
 GCCGCTCGGACTCTGTGATTATGGACAGACGCATTACTATACCAAAGACAGAACTCTGACGATAAGCT
 CAATGGCTGGCAGAACTCTCGGATTCTGGGATTGTCATCAGTGCCTCCAAGTGGCAGGACAAGAGCCTG
 GGCTGTGAGAATGGCCATGTGCCCTCTACTTCTCCTCGTCTGTCCCTGCCACAATCAACACGATTGGAA
 CCGGCGCAAGCACGAATGTTCCAGCTTGTTAAAAAGCCTCCGCCTGCACAAGTACGCTGCGCTCTTCTC
 GCAGATGACTTATGAGGAAATGATGGCCCTCACTGAGTGTCAACTGGAGGCTCAGAATGTTACCAAAGGC
 GCAAGACACAAAATTGTAATCAGTATTCAGAAGCTCAAAGAAAGACAGAACCTCCTGAAGCTTTGGAAA
 GGGACATCATCGAAGGGGGCAGCCTGCGCACCCCTCCAGGAGCTACATCAGATGATCCTGACACCCAT
 CAAGGCCCTACAGCTCTCCAGTACCACCCCTGAGGTGCGCTGCCGGGAGCCCTCACTGATGGAGAGCCCA
 AGCCCTGACTGCAAAGACAGCGCTGCAGCAGTACCAGCGCCACAGCCAGTGCCTCAGCCGGTGCCAGCG
 GTGGACTGCAACCACCCAGCTGACGAGCTGCGACGGAGAGCTGGCTGTCGCCCTCTGCCGGAGGGGGA
 CCTCCCGGGCAGTTACCCGAGTCATGGGAAAAGTGTGCACACAGCTCTTGGTCTCCAGACCCGATGAA
 GAAAATATAAGCTCCTATCTACAGCTCTTAGACAAGTGTCTTGTTCATGAGGCATTTACAGAGACACAGA
 AAAAAAGATTGTTGTCATGGAAACAGCAGGTGCAGAAGCTCTTTCGCTCTTCCCTCGGAAAACCTTCT
 AGACATATCAGGATATCGACAGCAAAGAAATCGTGGCTTTGGGCAGTCCAAGTCCCTCCCAACAGCCAGC
 TCTGTGGCAGCGGCATGGGCAGACGGAACCCACGACAGTACCAGATCGCATCTCGGAATGTCCCTCCG
 CCCGCTTGGTCTCCTGGCACCAGTGGATTTGTAGCTCCAACCAGCGCCACACCGCTGCCAACCCAC
 CATCATGAAACAAGGAAGACAGAACCTCTGTTTGCCAACCTGGGGCAGCAACAGCATGCCACGCCG
 ACCACAGCTCCGTCCAGAAGACCCGCTCGCTGCCCGTGCATACTCCCCACAAAACATGCTGATGTTCC
 AGCAACCAGAATTCAGCTTCTGTGACTGAACCTGACATCAACAATAGGCTGGAGTCTTGTGCCCTCAG
 TATGACGGAGCATGCCCTGGGAGACGGGTTGACCCGACCTCCACAATC

ACGCGTACGCGGCCGCTCGAG - GFP Tag - GTTTAA

Protein Sequence:

>MG218357 representing NM_028966
 Red=Cloning site Green=Tags(s)

MMFRDQVGLAGWFKGWNECEQTVALLSLLKRVSQTQARFLQLCLEHSLADCAELHVLEGEANSPGIINQ
 WQESKDKVISLLLTHLPLLPKNLDAKAEYMKLLPKILAHSEIHNQHIIEESRQLLSYAL IHPATSLDR
 SALAMWLNHLEDRTSTSFSGSNRGRSDSDYDYGQTHYYHQNSDDKLNQWQNSRDSGICISASNWQDKSL
 GCENGHVPLYSSSSVPATINTIGTGASTNVPWLKSLRLHKYAALFSQMTYEEMMALTECQLEAQNVTKG
 ARHKIVISIQKLKERQNLKSLERDIEGGSLRTPQLQELHQMIL TPIKAYSSPSTTPEVRCREPSLMESP
 SPDCKDSAAAVTSATASAGASGGLQPPQLSSCDGELAVAPLPEGDLPGQFTRVMGKVCTQLLVSRPDE
 ENISSYLQLLDKCLVHEAF TETQKRLLSWKQQVQKLF RFSFPRKLLDISGYRQQNRNGFGQSNLPTAS
 SVGSGMGRRNPRQYQIASRNVPSARLGLLGTSGFVSSNQ RHTAANPTIMKQGRQNLWFANPGGSNSMPSR
 THSSVQKTRSLPVHTSPQNLMFQQPEFQLPVTEPDINNRLLESCLSMTEHALGDGVDRTSTI

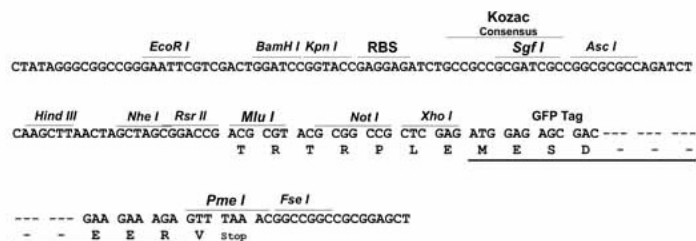
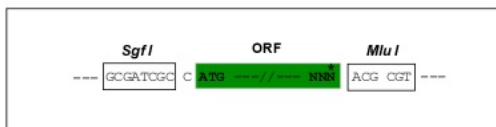
TRTRPLE - GFP Tag - V

Restriction Sites:

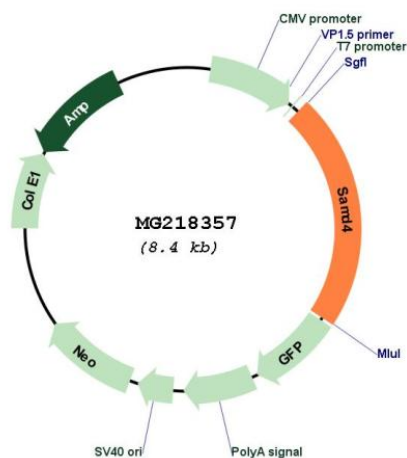
SgfI-MluI

Cloning Scheme:

Cloning sites used for ORF Shutting:



Plasmid Map:



ACCN: NM_028966
 ORF Size: 1869 bp

OTI Disclaimer:	The molecular sequence of this clone aligns with the gene accession number as a point of reference only. However, individual transcript sequences of the same gene can differ through naturally occurring variations (e.g. polymorphisms), each with its own valid existence. This clone is substantially in agreement with the reference, but a complete review of all prevailing variants is recommended prior to use. More info
OTI Annotation:	This clone was engineered to express the complete ORF with an expression tag. Expression varies depending on the nature of the gene.
Components:	The ORF clone is ion-exchange column purified and shipped in a 2D barcoded Matrix tube containing 10ug of transfection-ready, dried plasmid DNA (reconstitute with 100 ul of water).
Reconstitution Method:	<ol style="list-style-type: none">1. Centrifuge at 5,000xg for 5min.2. Carefully open the tube and add 100ul of sterile water to dissolve the DNA.3. Close the tube and incubate for 10 minutes at room temperature.4. Briefly vortex the tube and then do a quick spin (less than 5000xg) to concentrate the liquid at the bottom.5. Store the suspended plasmid at -20°C. The DNA is stable for at least one year from date of shipping when stored at -20°C.
RefSeq:	NM_028966.3 , NP_083242.1
RefSeq Size:	6856 bp
RefSeq ORF:	1872 bp
Locus ID:	74480
UniProt ID:	Q8CBY1
Cytogenetics:	14 C1
Gene Summary:	Acts as a translational repressor of SRE-containing messengers.[UniProtKB/Swiss-Prot Function]