

Product datasheet for **MG218354**

Tmem70 (NM_026392) Mouse Tagged ORF Clone

Product data:

Product Type:	Expression Plasmids
Product Name:	Tmem70 (NM_026392) Mouse Tagged ORF Clone
Tag:	TurboGFP
Symbol:	Tmem70
Synonyms:	1110020A09Rik; 2210416J16Rik
Mammalian Cell Selection:	Neomycin
Vector:	pCMV6-AC-GFP (PS100010)
E. coli Selection:	Ampicillin (100 ug/mL)
ORF Nucleotide Sequence:	>MG218354 representing NM_026392 Red=Cloning site Blue=ORF Green=Tags(s)

TTTTGTAATACGACTCACTATAGGGCGGCCGGAATTCGTCGACTGGATCCGGTACCGAGGAGATCTGCC
GCC**CGATCGCC**

ATGCTGTTGGGGTTGGGCGGCCGGTGGGCAGCGGGCCTATGGCCGGGCCGGACGAGGACGACGTGGTGTG
TGGCCGCGCGCTCCGAGGTTCCGGGATCGTTTCTGGCGTGCGGCCTCGCTAGCCGAGCCAGAGCGGCT
CCGGAGCGGGGGCATCTAGCGTAGCCGAGTCTTGGCGGCCACCGGGCGAGCGCAGCAGATACCTGTT
TGTTGGGAACAATGTGTCCGCTGCTTCCATACACAAGTTGATAAGCCAGAAAATGGCAGGCTGATTTATA
CTGAAACCTGGCCGAACGATATTTGGTGTGAAATGTTTCTCTATTCTACAAGTGTTCAGCCTTGC
ATCTTGGCGTACCTTCTCACAAAATAACATGATGTTTGAAGTCTGCCTTTGCAAGTCTATTTTAC
GGAGTCATGGGAAGCTTCACAGTGATCACTCCCACGCTGCTTACCTTCTACAAAAGGCTATGTCATTC
GGTTGTATCATGAAGCCACAAGTGACACTTACAGAGCTGTCACTTACAATGTTATGCTTTTCGAAACCAG
CACAGTGTTCACCAAGACGACGTGACAATCCAGAGAGCGCACATATTCACCAGCTTTTATGCTAAA
ACAAAATCGCTATTAGTTAATCCAGCACTCTTTTTAAACCCTGAAGACTATAACCATCTAATGGGTTATG
ACAAACCGTTCACCTTTGATATGGAAGAAGTCGATGAAAAGAACTGCATGAGGGTGAAAAA

ACGCGTACGCGGCCGCTCGAG - GFP Tag - GTTTAA



[View online »](#)

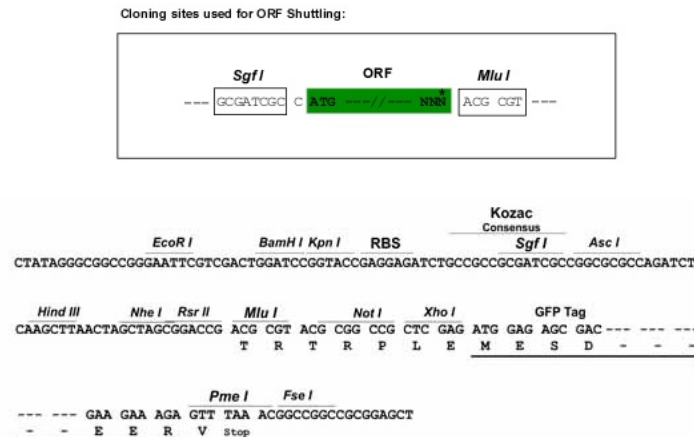
Protein Sequence: >MG218354 representing NM_026392
 Red=Cloning site Green=Tags(s)

MLLGLGGRWAAGLWPGRTRTTWCVAAALRGSGIAFWRAASLAEPERLRSGGHLALAESC GPPGRAQQIPV
 CWEQCVRCFHTQVDKPE NGRLIYTG NLARTIFGVKCF SYSTS SVVSLAFLPYLLSQNNMMFGSLPLQVLFY
 GVMGSFTVITPTLLHLLTKGYVIRLYHEATS DTYRAVTYNV MLSETSTVFHQDDVTIPESAHI FT SFYAK
 TKSLLVNPALFLNPEDYNHLMGYDKPFTFDMEEVDEKKLHEGEK

TRTRPLE - GFP Tag - V

Restriction Sites: SgfI-MluI

Cloning Scheme:



ACCN: NM_026392

ORF Size: 762 bp

OTI Disclaimer: The molecular sequence of this clone aligns with the gene accession number as a point of reference only. However, individual transcript sequences of the same gene can differ through naturally occurring variations (e.g. polymorphisms), each with its own valid existence. This clone is substantially in agreement with the reference, but a complete review of all prevailing variants is recommended prior to use. [More info](#)

OTI Annotation: This clone was engineered to express the complete ORF with an expression tag. Expression varies depending on the nature of the gene.

Components: The ORF clone is ion-exchange column purified and shipped in a 2D barcoded Matrix tube containing 10ug of transfection-ready, dried plasmid DNA (reconstitute with 100 ul of water).

Reconstitution Method:

1. Centrifuge at 5,000xg for 5min.
2. Carefully open the tube and add 100ul of sterile water to dissolve the DNA.
3. Close the tube and incubate for 10 minutes at room temperature.
4. Briefly vortex the tube and then do a quick spin (less than 5000xg) to concentrate the liquid at the bottom.
5. Store the suspended plasmid at -20°C. The DNA is stable for at least one year from date of shipping when stored at -20°C.

RefSeq: [NM_026392.1](#), [NP_080668.1](#)

RefSeq Size: 1732 bp

RefSeq ORF: 765 bp

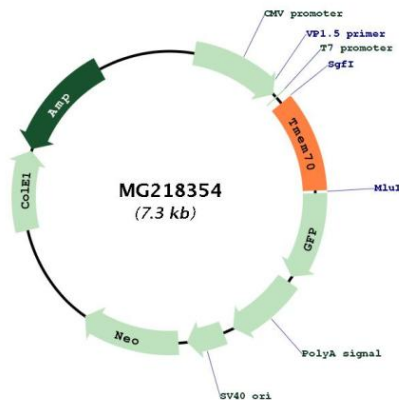
Locus ID: 70397

UniProt ID: [Q921N7](#)

Cytogenetics: 1 A3

Gene Summary: Involved in biogenesis of mitochondrial ATP synthase.[UniProtKB/Swiss-Prot Function]

Product images:



Circular map for MG218354