

Product datasheet for **MG218335**

Tctn1 (NM_001039153) Mouse Tagged ORF Clone

Product data:

Product Type:	Expression Plasmids
Product Name:	Tctn1 (NM_001039153) Mouse Tagged ORF Clone
Tag:	TurboGFP
Symbol:	Tctn1
Synonyms:	G730031O11Rik; Tect1
Mammalian Cell Selection:	Neomycin
Vector:	pCMV6-AC-GFP (PS100010)
E. coli Selection:	Ampicillin (100 ug/mL)



[View online »](#)

ORF Nucleotide Sequence:

>MG218335 representing NM_001039153
 Red=Cloning site Blue=ORF Green=Tags(s)

TTTTGTAATACGACTCACTATAGGGCGGCCGGGAATTCGTCGACTGGATCCGGTACCGAGGAGATCTGCC
 GCC**CGGATCGCC**

ATGGGGTCGCGGGTCTCCCGCCGCTCCTGCTGGTGTCTCTAACTGCTACACCTCTTCGAGACCCAGG
 TCATTGCCATCCCGGCTGCGGCCACCCAGCAGTGACGAAGGAGGATCTCAATCCACCAAGGCCACCCC
 CACCACCTGCGAGCCCTCCCTGTGCGCTAGGACCCCGGAACTCCAGGGCACCGGAGCGCTCTGGCCCC
 AGGCTACCCCGGTACGGACGTTGCTGCTGTGTGTCTGCGACCTGCTCCGGCACAGTGTGATGTCA
 ACTGCTGTTGCGACCCTGACTGCAGCCCTGAGATTTAGCATCTTCTCTGCCTGCTCAGTCCCAGTTGT
 CACGGGTGACAGGCAGTTTTGTAGTCAGAAGGCAGCCTTCTACTCAATGAATTTGACAGCAGACCCACT
 CACCGTGACTTTAACTCATTGATCAGATCAATCCTTCCGTCTTCTGCATCCATATTTCAAACAAGC
 CTGCAGTGTCTTTGCTAATCCAGAAGTGCCTGATGAAAAAATTTTACAGACTGATGCAGACATCAGG
 TGGCTTACACTGAGTGCAGTCCGCTGTTCCCTCCACAGCCGATCAGATGGCCACAGCCCACTAAA
 TACGAGTATGGAGCCCTCTGCAGACTGCAGGAGCATCTTCAGGGTCATTTCTGAAACTGCCTCGCCTC
 TCACGTATCTCTGTGTGAGATCAGAACCCCGCAGCGTTCCTGGTGAGCCAGGCCCTTGAATGCAGCCG
 AAGGGTGGACATAGAACAGTGTGAAGGAATGGAAGCCCTCAGCATGGCTCATTACAGCAGCCCTGCCATT
 CTGAGGGTACCTAATTAATGACACAGGTCTCCATCAAGATCCAGTCTGTAATGTATCGGTCTCTGAATC
 ACACACTGACGCAGTTAGAAGGCCATGGTGTCTGCGGCCATCTCTGGTCAAGTGGGCAAGACAGACT
 CTGCAGCAACGTTGTTCTCCAGGTGAAGTACAGTCTGCTGTACACAGCCACAGGCCAGATCCACGAAGCC
 GGCTCTCCCTCGTTCTGGGGACACTGACAGCGCTGTGAGTCTCTGCAGCAGAAGTTGAGATTCACT
 TTATTCAGCATGGCACCAGCCCTGTTCCCTCTCAGCGCAACCCTGGTTACAGGGTGGGACTCCCGCTGGC
 TGCTGGCTTTCAGCCTCAGAAGGGATCTGGGATTATTAGACAACGAACAGACAAGGCCAATTTACTATT
 CTTCTGACAGCCAGCAGGATTGCCTTCCAGCGAGGGGCTTCGACCCCTGTGCTATTTGGCTACA
 ATGTGCAGTCTGGCTGTGAGCTCAGGTTGACAGGCACCATCCCTTGTGGGCTTCTGGCACAGAAGGTGCA
 GGACCTGCTGAGAGGCCAGGCCCTCCCTGACTATGTGGCTGCCTTTGGAACTCCCGGGCCAGGATGTG
 CAGGACTGGGTGCCTGTGCACTTTGTCACTACTCCTCCAACATGAAGGGCTCTTCCAGCTTCCGGTGG
 CTTTGGCTATAGAAGTGAATGGACTAAGTATGGGTCCCTGCTGAACCCCGAGCCAGGATAGTAAATGT
 CACTGCCAGCTCGTCTCAGTTCAGAGCCCTCCAGGGCTGAGAGGACCGTGGTCATTTCCACTGCA
 GTGACATTTGTGGATGTGTCAGCCCTGCAGAGGCAGGCTCCGAGCCCCACCCACCATCAACGCCAGGC
 TACCCTCAGCTTCTTCCCGTTTGTG

ACGCGTACGCGGCCGCTCGAG – GFP Tag – GTTTAA

Protein Sequence:

>MG218335 representing NM_001039153
 Red=Cloning site Green=Tags(s)

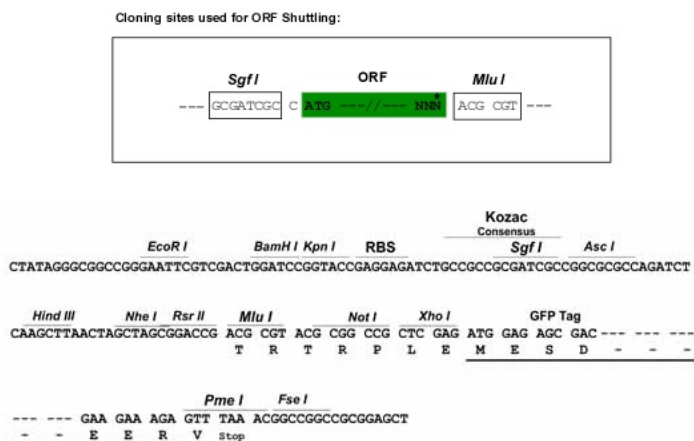
MGSRGLPPLLLVLLNCYTSSSTQVIAIPAAATPAVTKEDLNSTKATPTTLQPSLSPRTPGTPRAPERSGP
 RPTPVTDVAALCVCDLLPAQCDVNCCDPDCSPADFSIFSACSVPVVTGDRQFCSQKAIFYSMNLTADPP
 HRDFKLIHQINPVSFVCIHISNYKPAISFANPEVPDENNFDRMQTSGGFTLSAESAVPSTAAADGPPQPTK
 YEYGAPLQTAGASSGSFLKLPSPLTSSLCADQNPAAFVLSQAFECRRVDIEQCEGMEALSMHYSSPAI
 LRVNSMTQVSIKIQSVMYRSLNHTLTQLEHGVLRLPSLVSTGQDRLCSNVVLQVKYSLLYTATGQIHEA
 GLSLVLGTLSSAVSLLQQKFEIHF IQHGTKPVPLSGNPGYRVGLPLAAGFQPQKSGSIIQTNRQGFQTI
 LRSTSQQDCLASEGLRTPVLFYNYVQSGCQLRLTGTIPCGLLAQKVQDLLRQAFDPDYVAAFNSRAQDV
 QDWVPVHFVITYSSNMKGSCQLPVALAIEVKWTKYGSLLNPQARIVNVTAQLVSVPEPLPGPERTVVI
 VTFVDVSAPAEAGFRAPPTINARLPFSFFFFFV

TRTRPLE – GFP Tag – V

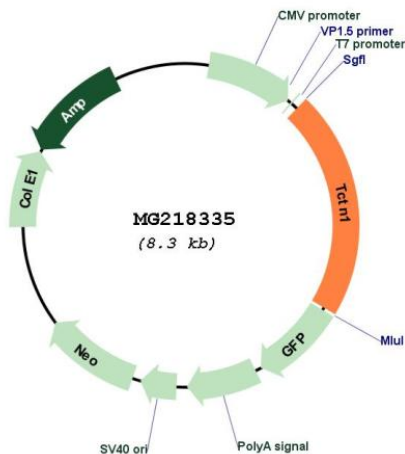
Restriction Sites:

Sgfl-MluI

Cloning Scheme:



Plasmid Map:



ACCN: NM_001039153
 ORF Size: 1779 bp

OTI Disclaimer:	The molecular sequence of this clone aligns with the gene accession number as a point of reference only. However, individual transcript sequences of the same gene can differ through naturally occurring variations (e.g. polymorphisms), each with its own valid existence. This clone is substantially in agreement with the reference, but a complete review of all prevailing variants is recommended prior to use. More info
OTI Annotation:	This clone was engineered to express the complete ORF with an expression tag. Expression varies depending on the nature of the gene.
Components:	The ORF clone is ion-exchange column purified and shipped in a 2D barcoded Matrix tube containing 10ug of transfection-ready, dried plasmid DNA (reconstitute with 100 ul of water).
Reconstitution Method:	<ol style="list-style-type: none">1. Centrifuge at 5,000xg for 5min.2. Carefully open the tube and add 100ul of sterile water to dissolve the DNA.3. Close the tube and incubate for 10 minutes at room temperature.4. Briefly vortex the tube and then do a quick spin (less than 5000xg) to concentrate the liquid at the bottom.5. Store the suspended plasmid at -20°C. The DNA is stable for at least one year from date of shipping when stored at -20°C.
RefSeq:	NM_001039153.3 , NP_001034242.2
RefSeq Size:	2068 bp
RefSeq ORF:	1782 bp
Locus ID:	654470
UniProt ID:	Q8BZ64
Cytogenetics:	5 F
Gene Summary:	Component of the tectonic-like complex, a complex localized at the transition zone of primary cilia and acting as a barrier that prevents diffusion of transmembrane proteins between the cilia and plasma membranes. Regulator of Hedgehog (Hh), required for both activation and inhibition of the Hh pathway in the patterning of the neural tube. During neural tube development, it is required for formation of the most ventral cell types and for full Hh pathway activation. Functions in Hh signal transduction to fully activate the pathway in the presence of high Hh levels and to repress the pathway in the absence of Hh signals. Modulates Hh signal transduction downstream of SMO and RAB23.[UniProtKB/Swiss-Prot Function]