

Product datasheet for **MG218330**

Gcc2 (NM_027375) Mouse Tagged ORF Clone

Product data:

Product Type:	Expression Plasmids
Product Name:	Gcc2 (NM_027375) Mouse Tagged ORF Clone
Tag:	TurboGFP
Symbol:	Gcc2
Synonyms:	0610043A03Rik; 2210420P05Rik; 2600014C01Rik; AW112121; mKIAA0336
Mammalian Cell Selection:	Neomycin
Vector:	pCMV6-AC-GFP (PS100010)
E. coli Selection:	Ampicillin (100 ug/mL)
ORF Nucleotide Sequence:	>MG218330 representing NM_027375 Red=Cloning site Blue=ORF Green=Tags(s)

TTTTGTAATACGACTCACTATAGGGCGGCCGGAATTCGTCGACTGGATCCGGTACCGAGGAGATCTGCC
GCC**CGATCGCC**

ATGGAGGATTCTGCTCCAGATGCCGTAGCTGCAGCACCCCTCCGGGACCCCGAAATCCAAGCTAGAAACGT
TGCCAGAGAAGATCTCATCAAGTTTGCCAGAAGCAAATGATGCTCCTGCAGAAAGCCAAAGCAAGGTG
TACAGAATTAGACAAAGAAGTTGAAGAACTCAAATCAAAACCTGTTGATGGAGGAACTGATGATATTATT
AAGGTACTAACTGAACGCTTGGATGCTCTTCTTGGAAAAAGCAGAGACTGAACAACAGTGTCTATGTC
TGAAAAAAGAAAATGTTAAAATGAAGCAAGAGGTTGAGGATTCTGTAACATAAACTGGAAGAGACACAA
AGAGTTTGAACAATCACATAGAACTACGTAAAAGAAATGAAAAGCTGTAAAAATGAGCTGATGGCAGTG
CACTCAGAGCACAGCAAAGAAACGGCCATCTTACAAAAAGAACTGGAAGAAGCTGTCCATAGCAAGTAG
AGCTGAGAGAGCAGCTTAAGTCTCAGAGTGACTCTGAAGATAACGTGAGAAAAGCTGCAGGAAGAGATTCA
AAACATCACAGCAGCATTGAGGAACAGATTTTCACTGTCTAGAGAAGAAATAGAAGCTACCAAGTATGAA
AAACAACAAGAGATTATTCATCTCCAGAAAGTCATTGAGGACAAGGCTCAGCACTACCAAAAAGATATTA
ATACTTTCCAAGCAGAGATTTTGCAGCTGAGAGCTACACAAAAGAAGAACTACTGAGCTGATGTCTCA
AATAGAAAATCAGCTAAAGAACACGAGGCAGAAATAAATAAACTAAAAGAGAACAGAGTGACACAGTGT
GAGGCAAGTGAGAACATTCCAGAGAAATACCAATGTGAATCGGAAAACCTAAATGAAGTGCCTCAGATG
CAAGCCCGAGAGTCAGAAATTGCTCTGTGGCCTTACAGGAAGATCCTTCTGCGGAACAAACAGTATGTGA
TAAAGTCAGACAATTGGAAGATTCATTAAGAAGAACTGGAATCTCAACATAGTATCTTAAAAGATGAAGTA
ACTTATATGAATAATCTCAAGTTAAAACCTGAAATGGATGCCAGCATATAAAGGATGAGTTTTTCCATG
AACGAGAAGACTTAGAGTTTAAAATTAATGAAGTGTGCTGGCTAAAGAAGAACAGGCTATGTAGTAGA
AAAATTAATAATGAGCGAGAAGATTTAAATAGGCAACTTTGCTGTGCTGTGGAACAACATAACAAAGAA
ATACAGCGTCTTCAGGAACACCATCAGAAAGAAGTCTCTGAACTAAGTGAGACATTTATACAGTTTCAG
AAAAGAAAAGTTAGCATTGATGTTTGAATACAAGTCTTAAGGAACAGTGTGAAAATCTACAACATGA
AAAGCAAGAGGTAGTTCTAAACTATGAGAGTTTACGAGAGATGATGGAAATTTTACAACAGAAGTTGGA



[View online »](#)

GAATCTGCTGAAAAATAAGTCAAGAGTTTGAACAATGAAGCAACAGCAAGCATCTGATGTTTCATGAGC
TTCAGCAGAAGCTAAGAAGTGCCTTTAATGAAAAAGATGCCTCTTCTTAAAAGTGTGAATCGCCTCCAAGG
AGAAAAAGAAAAATTATTCTCAACAAGAATTAGTACCAGAAGTGTAAAAGTACCATAAAGAACCTTCAG
GCAGATAATAGCATGACTTAGCCAGTCTTGGTCAAAAAGATACCATGTTACAAGAATTAGAAGCAAAGA
TAAGTTCTCTTGCTAAAGAAAAAGATGACTTTATAAGTAAAATCAAACCTCCCATGAAGAGATGGATGA
TCTCCATCAGAAATGGGAAAGGGAACAGAGACTGTCTGTAGAAGTCAAGGAAAGCAGCAGGGCAAGCTGCC
CAGCACAACAGTGAAGTGAAGCAAGAGTAAGTGAATTAACAGGGAAACTAGATGAAGTAAAGAGAAA
AGAGTCAAAATGACCAAAGCATTACGGTTCAAATGAAAAGTATGACGGAAGATCAAGAAGCTCTGTGCATC
TAAAATCAAGTCTCTTTATGAGGAAAAACAATAGACTACATTCAGAAAAGGCCAGTTGAGCAGGGATTTA
GAAGCACTTCAGGCTCAACAAGATTTTGCCATAAAGAACATGTTGCTGAATTCGAAAAGAACTCCAGT
TAATGGTTGAGGAGCGAGACGATTTAAATAAAGTCTTAAAAAGTGAAGCAAGTTCAGAAGTCAATTTGTTAA
AACTCAGTTGATGAGTATCTTAAGCAACTGAGGGCAAGCATTTTAGAAGAAAATGAAGAGGAAGATGTT
GTCAAACCTATAACAAGCTGTAGGTGAATCTTTAGTGAAGTAAAGGAAGAAGAACAATTAAGTCTTTG
AATATGATGCAAGGATTAAGAATTAGAAAATAAGATTAAGTGTCTTCAAGAGGACAGTGCAGTTCAAGT
TGAAGAAGTAAAGGACTTTAGTAAAGAGACTGTGAGCAAGAGAAAATTCCTCAAGAAAAGAATTAGATGCA
GTCACATCAGCAAAGAGGCCCTCAACTTGATCTTTAGAAAATGAAGAATACTAATGAGAAAAGCAAGCC
TTGAAAACAGACTCTTTCAACTCAGGTTGAAGAATTATCTCAGACATTACACAGCAGAAAATGAAGTCCA
TGATGAAAAGGTTCTTGTAAATAGAACATGAAAACCTAAGGCTACTGCTTAAACAGAGGGAATCTGAAGT
CAAGATGTGAGAGCAGAAATGATACTGCTAAAGGATTCCTTAGAGAAAATCGCCTTCTGTAAAAAATGATC
AACTTTCAATGGTAAAAGAGCTGGAAAGAAAAATAGAAAGTCTGGAAAAGAAATCCAAAGACAAGGATGA
GAAAATAAGTAAAGATAAAACTAGTTGCTGTGAAAGCAAAGAAAGAACTAGATTCTAACAGGAAAGAGGCC
CAGACACTACGGGAAGAACTGGAATCCGTGCGGTGAGAAAAGGACCGCCTGTCTGCTTCTATGAAGGAGT
TCCTCCAAGGAGCAGAGAGCTATAAGAGTCTTCTGTTAGAATATGATAAGCAGTCAAGAAAGTGGATGT
GGAAAAGAACGTGCTCATAATTTGAACGTATATAAGAAGACCTTACCAAACAATTAAGAATTCGACT
TGCCAGTATGAAAGACTAACTTCAGACAACAGGATCTCCTGGCTCGAATTGAGACCCTGCAGGCTAATG
CCAAGTTGTTAGAAGCACAGATCTTAGAAGTCCAGAAAGCCAAAGGAGTAGTAGAAAAAGAACTGGACGC
TGAAAAGTTCAGAAAGAGCAGAAAATTAAGGAACATGTCAGTACTGTAATGAGCTCGAAGAACTCCAA
CTCCAATTTCAAAGGAAAAGAGCAGCTTCAGAAAACAATGCAAGAATTAGAGCTGGTTAAAAAGGATG
CCCAACAGACCACATTGATGAATATGGAATAGCAGATTACGAACGTTTGTGAAAGAACTAAATCAAAA
GTTAAACAATAAAAACAGTACAATAAGAAGATTTGGAGCAAGAAATGAAAATTCAGAAAGAGAAAACAAGAA
ACCCTACAAGAAGAAATAACTTCACTGCAGTCGTAGTACAGCACTATGAAGAAAAGAACTAAATCA
AGCAGCTGCTTGTGAAAACCAAAGGAGCTGGCAGATGCAAAGCAAGCGGAAACCGATCACTTACTACT
CCAGGCATCTTTAAAGGGTGAGCTGGAAGCAAGCCAGCAGCAAGTGAAGTCTATAAAAATTCAGCTGGCT
GAGATGACATCTGAGAAACAAAAATCCATGAGCATCTGAAGACTTCTGCGGAACAGCACCAGCGCACAC
TGAGTGCAATACCAGCAGAGGGTGGTGGCCCTGCAGGAGGAGAGTCCGCTGCCAAGGCAGAAACAGCTGC
TGTACCTCTGAATTTGAGAGCTACAAAGTCCGAGTTCATAACGTTCTAAAGCAACAGAAAAATAAATCT
GTGTCTCAGGTTGAAACTGAGGGAGCTAAACAAGAAAGGGAACACCTGGAATGCTGATTGACCAACTGA
AAATCAAGTTACAGGACAGCCAAAATAGCTTACAAATCAGTGTATCGGAGTACCAGACCTGCAGGCTGA
GCACGACTCTGCTAGAGAGGCACAACCGGATGCTGCAGGAAACTGTGACCAAGAGGCAAGAACTTCGG
GAAAAGCTATGTTCAAGTCAATCTGAGAACACCATGATGAAGTCTGAGCACTCGCAGACAATGTGTGAGC
TAACATCCAGAATGAAGCACTCCGTACCAGCTTCCGAGACCAAGTTCCGACACTTGCAGGATGAGCACAG
AAAGACAGTGGAGACTCTGCAGCACCAGCTCTCCAAGCTGGAAGCTCAGCTCTTCCAGCTCAAGAGTGAG
CCATCCACAAGAAGCCCTGCTTCTTCCATCAACCTTCGAAAAGCCTCCGAGAAAAGAAAGAACACAGACC
TCCCCCTTCTGGACATGCACACTGTGGCCCGGAGGAGGGGGAGGGCATGGAGACAAGTACAGCGGAGTC
TGTGTCTGCGGAGGCACACACATTGAGTCTTAGAGCAGCTCCTTAGCTCTCTGACACCAAGCTTGAA
CGCCTTGACAGAGACCTCCTTGTGCATAATGAATTTACCAAAGAAGAATTAGCTGAGAAGCTCAGCTCCA
CCAGAAAGAGTGCAGATCACTTAAACGGCTGCTTCCGGAGACAGAGGCTACCAACGCTATCCTTATGGA
GCAAAATTAAGCTTCTCAAGAGTGAATAAAGAAAGTGGAAAAGAAACCAAGAGCTGAGAAGTCTGTGGCT
AACCTGGAGTACTTGAAGAATGCTTGTGCTGCGGTTCAATTTCTGAAAGCCGGGTAGTGAAGAGAGAGGC
TTCTGCCTGTGATAGACACCATGCTGCAGCTCAGCCCTGAGGAAAAGGAAAGCTTGCCACAGTTGCTCA
AGGTGAGGAAGAAAGTGTCTCTGTTCTCTGGATGGGCGTCTATCTGCATAGCTGGTCTGGACTGCGA

ACGCGTACGCGGCCGCTCGAG - GFP Tag - GTTTAA

Protein Sequence:

>MG218330 representing NM_027375
 Red=Cloning site Green=Tags(s)

MEDSAPDAVAAPSGTPKSKLETL PREDLIKFAKKQMLLQKAKARCTELDKVEEELKSKPVDGGTDDII
 KVLTERLDALLLEKAETEQQCLCKKENVKMKQEVEDSVTKLEETHKEFEQSHRNYVKEIESCKNELMAV
 HSEHSKETAILQKELAAVHKQVELREQLKSQSDSEDNVRKLQEEIQNITAAAFEEQISCLEKKLEATSDE
 KQOEIIHLQKVIEDKAQHYQKDINTFQAEILQLRATHKEEVELMSQIETSAKEHEAEINKLKENRVTC
 EASENIPEKYQCESENLEVASDASPESQNCVALQEDPSAEQTVCDKVRQLEDLSLKELESQHSILKDEV
 TYMNNLKLKLEMDAQHIKDEFFHEREDLEFKINELLAKEEQGYVVEKLYEREDLNRQLCCAVEQHKE
 IQRLEHHQKEVSELSETFISGSEKEKLALMFEIQGLKEQCENLQHEKQEVVLYESLREMMEILQTEL
 ESAGKISQEFETMKQQQASDVHELQQLRSFAFNEKDALLETVNRLQGENEKLLSQQELVPELESTIKNLQ
 QHNSELRQRVSELTGKLDLVREKSNQDQSITVQMKMTEDQEALSSKIKSLYEENNRLHSEKAQLSRDL
 EALQAQQDFAHKEHVAEFKQLQMLMVEERDDLNLLENEQVQKSFVKTQLYEYLKQLRASILEENEEEDV
 VKLIQAVGESLVKVEEENLVEFYDARVLELENKIKCLQEDSAVQCEELRTLVRDSEQEKILLRKELDA
 VTSAKEALQLDLLEMNTNEKASLENQTLSTQVEELSQLHSRNEVHDEKVLVIEHENLRLLLKQRESEL
 QDVRAELILLKDSLEKSPSVKNDQLSLVKELEEKIESLEKESKDKDEKISKIKLVAVKAKKELDNRKEA
 QTLREELSVRSEKDRLSASMKEFLQGAESYKSLLEEDYKQSEQLDVEKERAHNFERHIEDLTKQRNST
 CQYERLTSNEDLLARIETLQANAKLLEAQILEVQKAKGVVEKELDAEKLQKEQKIKEHVSTVNELEELQ
 LQFQKEKKQLQKTMQELELVKKDAQTTLMNMEIADYERLMKELNQLTKNKNSTIEDLEQEMKIQKEKQE
 TLQEEITSLQSSVQHYEEKNTKIKQLLVKTKKELADAKQAETDHLQLQASLKGELASQQQVEVYKIQLA
 EMTSEKHKIHEHLKTSAEQHQRTL SAYQQRVVALQEE SRAAKAEQAAVTSEFESYKVRVHNVLKQKKNKS
 VSQVETEGAKQEREHLEMLIDQLKIKLQDSQNSLQISVSEYQTLQAEHDTLLERHNRMLQETVTKEAELR
 EKLCVQSENTMMKSEHSQTMQCLTSQNEALRTSFRDQVRHLQDEHRKTVETLQHQLSKLEAQLFQKSE
 PSTRSPASSHQPSKSLRERRTTDLLDMHTVAREEGEGMETTDESSEVSSAGTHIQSLEQLLSSPDTKLE
 RLAETSLWHNEFTKEELAEKLSSTTKSADHLNGLLRETEATNAILMEQIKLLKSEIRRLERNQEREKSV
 NLEYLKNVLLRFIFLKPGERERLLPVIDTMLQLSPEEKGLATVAQGEESASRSSGWASYLHWSGLR

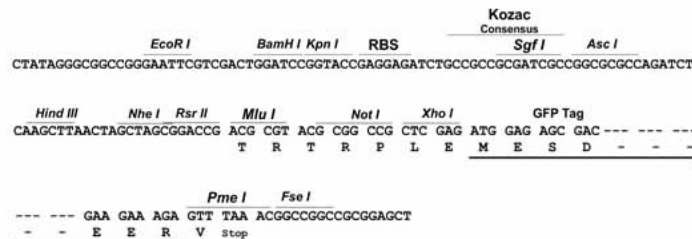
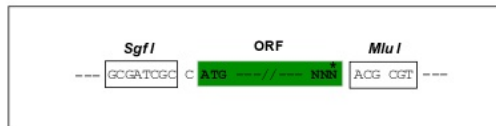
TRTRPLE - GFP Tag - V

Restriction Sites:

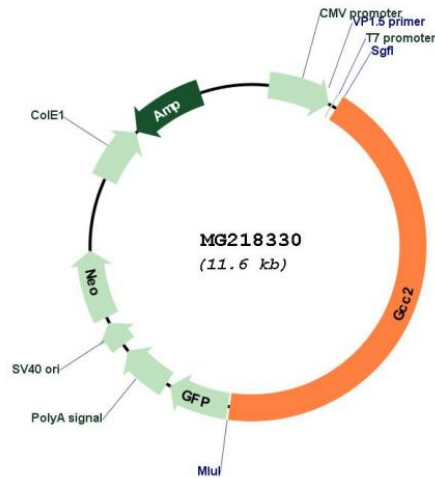
Sgfl-MluI

Cloning Scheme:

Cloning sites used for ORF Shutting:



Plasmid Map:



ACCN: NM_027375

ORF Size: 5040 bp

OTI Disclaimer: The molecular sequence of this clone aligns with the gene accession number as a point of reference only. However, individual transcript sequences of the same gene can differ through naturally occurring variations (e.g. polymorphisms), each with its own valid existence. This clone is substantially in agreement with the reference, but a complete review of all prevailing variants is recommended prior to use. [More info](#)

OTI Annotation: This clone was engineered to express the complete ORF with an expression tag. Expression varies depending on the nature of the gene.

Components: The ORF clone is ion-exchange column purified and shipped in a 2D barcoded Matrix tube containing 10ug of transfection-ready, dried plasmid DNA (reconstitute with 100 ul of water).

Reconstitution Method:

1. Centrifuge at 5,000xg for 5min.
2. Carefully open the tube and add 100ul of sterile water to dissolve the DNA.
3. Close the tube and incubate for 10 minutes at room temperature.
4. Briefly vortex the tube and then do a quick spin (less than 5000xg) to concentrate the liquid at the bottom.
5. Store the suspended plasmid at -20°C. The DNA is stable for at least one year from date of shipping when stored at -20°C.

RefSeq: [NM_027375.2](#), [NP_081651.2](#)

RefSeq Size: 6528 bp

RefSeq ORF: 5043 bp

Locus ID: 70297

Cytogenetics: 10 B4