

Product datasheet for **MG218328**

Ociad1 (NM_001159887) Mouse Tagged ORF Clone

Product data:

Product Type: Expression Plasmids
Product Name: Ociad1 (NM_001159887) Mouse Tagged ORF Clone
Tag: TurboGFP
Symbol: Ociad1
Synonyms: 6030432N09Rik; AI481327; Asrij; AW557942; B230209J16Rik; BB021357; Emi2; Imi2; OCIA; TPA018
Mammalian Cell Selection: Neomycin
Vector: pCMV6-AC-GFP (PS100010)
E. coli Selection: Ampicillin (100 ug/mL)
ORF Nucleotide Sequence: >MG218328 representing NM_001159887
 Red=Cloning site Blue=ORF Green=Tags(s)

TTTTGTAATACGACTCACTATAGGGCGGCCGGAATTCGTCGACTGGATCCGGTACCGAGGAGATCTGCC
 GCC**GCGATCGCC**

ATGAATGGGAGGCTGATTTTCGAGAACCGAATGCACAAGTGCAAGACCTATCCCGACATAGGAGCGG
 GTTATATCCGACAGAGGAGGTGGAGACTCTTTCGAGAGTGCCATGAAGAGTGCTTCTGGTTCAGATC
 TGTGCCGTTGGCTGCCACAAGTATGCTGATTACTCAAGGATTAATTAGTAAAGGAATCCTGTCAAGTCAT
 CCAAAATATGGTTCAATTCCTAACTTCTATTCGCTTGTATCGTGGGTACTTCGCTGGAAAGCTTTCTT
 ACGTGAACAGTCCAAGAGAAGTTCAAGAAGCTTGAAAACCTCCCCCTTGGAGAAGCACTGCGGTCGGG
 AGAATTGCGGCGCTCTTCTCCACCAGGGCACTATACTCAAAGCCTAAATTTGACTCAAATGTGAGTGGT
 CAGTCCTCTTTCGGGACATCTCCAGCAGCAGACAACATAGAAAAGGAGGCGCTTCTCGTTATGAGCCAA
 TTCCATTTAGTGCTTCTATGAACGAGTCCACTCCCACTGGTATTACTGACCATATTGCCAAGTCAAAGT
 AAACAAATATGGAGATACTTGGGATGAG

ACGCGTACGCGGCCGCTCGAG - GFP Tag - GTTTAA

Protein Sequence: >MG218328 representing NM_001159887
 Red=Cloning site Green=Tags(s)

MNGRADFREPNAQVSRPDPIDGGYIPTEEWRLF AECHEECFWFRSVPLAATSMLITQGLISKGILSSH
 PKYGSIPKLLFACIVGYFAGKLSYVKTCQEKFKLENSPLGELRRSSPPGHYTQKPKFSDNSVSG
 QSSFSGTSPAADNIEKEALPRYEPFIPFSASMNESTPTGITDTHIAQVKVKNKYGDTWDE

TRTRPLE - GFP Tag - V

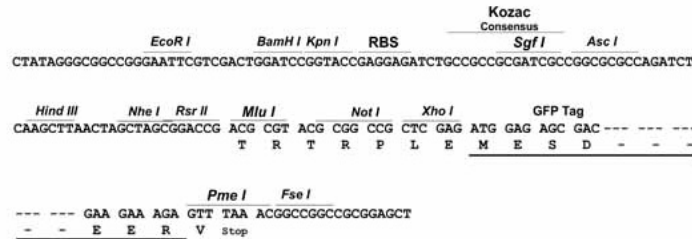


[View online >](#)

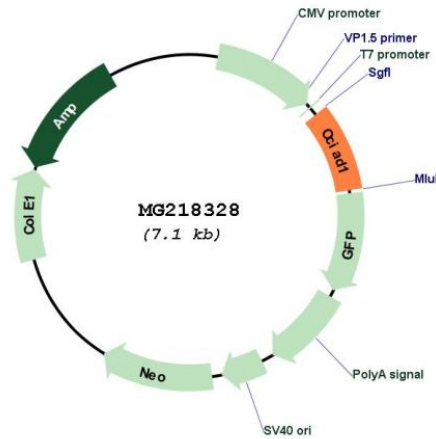
Restriction Sites: SgfI-MluI

Cloning Scheme:

Cloning sites used for ORF Shuttling:



Plasmid Map:



ACCN: NM_001159887

ORF Size: 588 bp

OTI Disclaimer: The molecular sequence of this clone aligns with the gene accession number as a point of reference only. However, individual transcript sequences of the same gene can differ through naturally occurring variations (e.g. polymorphisms), each with its own valid existence. This clone is substantially in agreement with the reference, but a complete review of all prevailing variants is recommended prior to use. [More info](#)

OTI Annotation: This clone was engineered to express the complete ORF with an expression tag. Expression varies depending on the nature of the gene.

Components:	The ORF clone is ion-exchange column purified and shipped in a 2D barcoded Matrix tube containing 10ug of transfection-ready, dried plasmid DNA (reconstitute with 100 ul of water).
Reconstitution Method:	<ol style="list-style-type: none">1. Centrifuge at 5,000xg for 5min.2. Carefully open the tube and add 100ul of sterile water to dissolve the DNA.3. Close the tube and incubate for 10 minutes at room temperature.4. Briefly vortex the tube and then do a quick spin (less than 5000xg) to concentrate the liquid at the bottom.5. Store the suspended plasmid at -20°C. The DNA is stable for at least one year from date of shipping when stored at -20°C.
RefSeq:	<u>NM_001159887.1, NP_001153359.1</u>
RefSeq Size:	1376 bp
RefSeq ORF:	591 bp
Locus ID:	68095
UniProt ID:	<u>Q9CRD0</u>
Cytogenetics:	5 C3.2
Gene Summary:	Maintains stem cell potency (PubMed:23972987). Increases STAT3 phosphorylation and controls ERK phosphorylation (PubMed:23972987). May act as a scaffold, increasing STAT3 recruitment onto endosomes (PubMed:23972987).[UniProtKB/Swiss-Prot Function]