

Product datasheet for **MG218309**

Ppm1h (NM_001110218) Mouse Tagged ORF Clone

Product data:

Product Type:	Expression Plasmids
Product Name:	Ppm1h (NM_001110218) Mouse Tagged ORF Clone
Tag:	TurboGFP
Symbol:	Ppm1h
Synonyms:	A430075L18Rik; ARHCL1; C030002B11Rik
Mammalian Cell Selection:	Neomycin
Vector:	pCMV6-AC-GFP (PS100010)
E. coli Selection:	Ampicillin (100 ug/mL)



[View online »](#)

ORF Nucleotide Sequence:

>MG218309 representing NM_001110218
 Red=Cloning site Blue=ORF Green=Tags(s)

TTTTGTAATACGACTCACTATAGGGCGGCCGGGAATTCGTCGACTGGATCCGGTACCGAGGAGATCTGCC
 GCC**CGCATCGCC**

ATGCTCACTCGAGTGAATCTGCCGTGGCCAATTTTCATGGCGGCATCATGGCTGGCAGCTCCGGCTCCG
 AGCACGGCGGGAGCGGCTGCGGAGGCTCGGACCTGCCCTGCGCTTCCCGTACGGGCGGCCGGAGTTCCT
 CGGGCTGTCTCAGGATGAGGTGGAGTGCAGCGCAGACCACATCGCCCGCCCATCCTCATCTCAAGGAG
 ACCCGGGCGGCTGCCCTGGGCCACTGGCTACGCAGAGGTTATTAATGCTGGGAAGAGCACACACAATGAGG
 ACCAAGCCAGCTGCGAGGTGCTCACAGTGAAGAAGAAAGCCGGAACCTTACTTCCACCCCGAACAGAAA
 CTCCAAGAGAAGTTCATCACTTCCAACGGGGAAGGCCTGCAGTTAAAGGAGAACTCTGAGTCCGAAGGC
 ATCTCTGCCACTACTGGTCCCTGTTTGACGGTCACGCAGGCTCGGGGGCTGCCGTGGTGGCATCGCGCC
 TGCTGCAGCACCACATCACGCAACAGCTGCAGGACATCGTGGAGATCCTGAAGAACTCGGCCATCCTTCC
 CCCGACCTGCCTGGGGGAGGAGCCAGAGAGCACGCCAGCCACGGCAGGACCCTAACCCGCGCGGCCTCA
 CTGCGTGGAGGTGTGGGTGCCCGGGCTCCCCAGTACGCCACCCACGGCTTCTTCACTGAGAAGAAGA
 TCCCGCACGAGTGTCTGGTTCATCGGGCCCTGGAGAGCGCTTTCAGGAATGGACCTTCAAATCGAACG
 CGAGAGGAGTGCCTATAATATCTGGCGGCTGCACGGCCCTCATCGTGGTTTGCCTCTTGGGGAAGCTC
 TATGTGGCGAATGCTGGCGACAGCGGGCCATAATCATCAGAAATGGAGAAATCATCCCCATGTCTTCCG
 AATTCACCCCTGAGACTGAGCGCCAGAGACTTCAGTACCTGGCGTTTCATGCAGCCCCACTGTCTGGGAAA
 TGAGTTACACATTTGGAGTTTCCAAGGAGAGTGCAGAGGAAGAACTCGGAAGAAGATGCTGTACCGG
 GACTTTAATATGACAGGCTGGGCATACAAAACCATTTGAGGATGATGACTTGAAGTTCCCCCTTATATATG
 GAGAAGGCAAGAAGGCCCGAGTAATGGCAACTTTGGAGTGACGAGGGGACTTGGGGACCATGACTTAAA
 GGTTTCATGACTCCAACATCTACATAAAACCATTCCTGTCTTCAGCTCCAGAGGTACAGAGTCTACGATCTC
 TCCAGATATGAGCACGGAGCAGATGACGTGCTGATCCTGGCTACTGATGACTCTGGGATGTCTTATCCA
 ACGAAGAAGTAGCGGAAGCAATCACTCAGTTTCTTCTAACTGTGATCCAGACGACCCTCACAGATACAC
 ACTGGCGGCTCAGGACCTGGTATGCGTGCCCGAGGCGTCTGAAGGACCGAGGGTGGCGGATATCGAAT
 GACCGACTGGGCTCAGGAGATGACATTTCTGTATATGTCATTCTTTAATACACGGAAACAACTGTCA

ACGCGTACGCGGCCGCTCGAG – GFP Tag – GTTTAA

Protein Sequence:

>MG218309 representing NM_001110218
 Red=Cloning site Green=Tags(s)

MLTRVKSAVANFMGGIMAGSSGSEHGGSGCGSDLPLRFPYGRPEFLGLSQDEVECSADHIARPILILKE
 TRRLPWATGYAEVINAGKSTHNEDQASCEVLTVKKKAGTITSTPNRNSKRRSSLPNGEGLQLKENSESEG
 ISCHYWSLFDGHAGSGAAVVASRLLQHHTQQLQDIVEILKNSAILPPTCLGEEPESTPAHGRTLTRAAS
 LRGGVGPSPSTPPTRFFTEKKIPHECLVIGALESFAKEMDLQIERERSAYNISGGCTALIVVCLLGLK
 YVANAGDSRAIIRNGEIIIPMSSEFTPETERQRLQYLAFMQPHLLGNEFTHLEFPRRVQRKELGKMLYR
 DFNMTGWAYKTIEDDDLKFLIYGEGKKARVMATIGVTRGLGDHDLKVHDSNIYIKPFLSSAPEVRVYDL
 SRYEHGADDVLI LATDGLWDVLSNEEVAEAITQFLPNCDDPDPHRYTLAAQDLVMRARGVLKDRGWRI SN
 DRLGSGDDISVYVIPLIHGNKLS

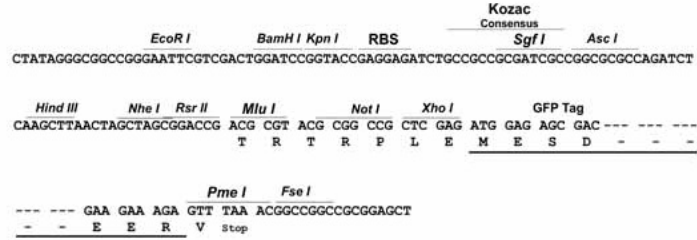
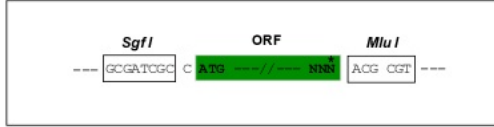
TRTRPLE – GFP Tag – V

Restriction Sites:

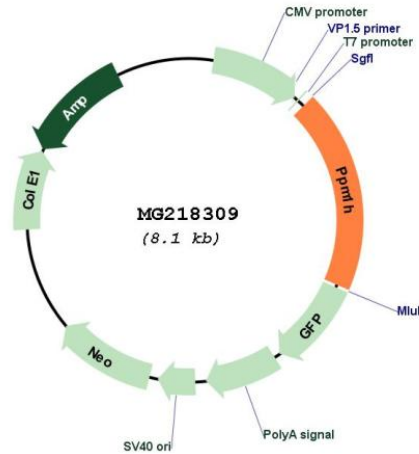
Sgfl-MluI

Cloning Scheme:

Cloning sites used for ORF Shutting:



Plasmid Map:



ACCN: NM_001110218

ORF Size: 1539 bp

OTI Disclaimer: The molecular sequence of this clone aligns with the gene accession number as a point of reference only. However, individual transcript sequences of the same gene can differ through naturally occurring variations (e.g. polymorphisms), each with its own valid existence. This clone is substantially in agreement with the reference, but a complete review of all prevailing variants is recommended prior to use. [More info](#)

OTI Annotation: This clone was engineered to express the complete ORF with an expression tag. Expression varies depending on the nature of the gene.

Components: The ORF clone is ion-exchange column purified and shipped in a 2D barcoded Matrix tube containing 10ug of transfection-ready, dried plasmid DNA (reconstitute with 100 ul of water).

Reconstitution Method:

1. Centrifuge at 5,000xg for 5min.
2. Carefully open the tube and add 100ul of sterile water to dissolve the DNA.
3. Close the tube and incubate for 10 minutes at room temperature.
4. Briefly vortex the tube and then do a quick spin (less than 5000xg) to concentrate the liquid at the bottom.
5. Store the suspended plasmid at -20°C. The DNA is stable for at least one year from date of shipping when stored at -20°C.

RefSeq: [NM_001110218.1](#), [NP_001103688.1](#)

RefSeq Size: 6413 bp

RefSeq ORF: 1542 bp

Locus ID: 319468

UniProt ID: [Q3UYC0](#)

Cytogenetics: 10 D2

Gene Summary: Dephosphorylates CDKN1B at 'Thr-187', thus removing a signal for proteasomal degradation. [UniProtKB/Swiss-Prot Function]