

Product datasheet for **MG218241**

Zmym4 (NM_001114399) Mouse Tagged ORF Clone

Product data:

Product Type:	Expression Plasmids
Product Name:	Zmym4 (NM_001114399) Mouse Tagged ORF Clone
Tag:	TurboGFP
Symbol:	Zmym4
Synonyms:	6330503C17Rik; AI480785; AW493829; CDIR; D630001M21; mKIAA0425; MYM; Zfp262; Znf262
Mammalian Cell Selection:	Neomycin
Vector:	pCMV6-AC-GFP (PS100010)
E. coli Selection:	Ampicillin (100 ug/mL)
ORF Nucleotide Sequence:	>MG218241 representing NM_001114399 Red=Cloning site Blue=ORF Green=Tags(s)

TTTTGTAATACGACTCACTATAGGGCGGCCGGAATTCGTCGACTGGATCCGGTACCGAGGAGATCTGCC
GCC**CGATCGCC**

ATGGCGGAGCGGGAGGTGGAGACCGGCCCCGAAAGAGGTTTGAACAGAAAAGTGATGCAGTTTTTGATG
AAATTGTAGAAAAGTGTGGTGTTCATGGATACAGAAATGTCTGAAGATACAGACCACAACCTAACTCCCAC
CCTTGCCAGCATGCTTATGGAATGCCGAATCAAACAGGATCTGAAAATTCATTGCTGGATGAAGATGAT
TATTTTTGAACTCTGGGATCTTGCGAATTCAGTCGTTAGTAGTACAATGAGGATGAACAGGATT
GTAGTTCAAAGGACAACCTTGTCTTTCAGTTCACACTGATGGTAGTTTGAAGTGAAGAGAAGAGCTGC
TCATCAGGAATCAGACAATGAAAATGAAATACAAATTCAAAATCAGTTAAAAAAGACTTTCCTAAACAG
TTTGATCAGGTTTCTGTCTTTAAATCAATACGAAAAGATTTTTGTTTGTAGTGAAGAAAACAGCAAAGAGA
CATTTTCTGAAAAGGAGAAAAATAGAGACCTAACTTATCATGAACGTGAAAAACGGTTGGATAAACCCCA
TAAAGGTTTGGATTCAAGGTTGAAAAGCAGTTTTTTTGTAAAGCAGCTAATCAAGTTGAAGAAACATTA
CATACTCATTTACCACAAAACCCAGAAACAACTTTAGGGACTCCAGCTACCCATTTGCCAGTAAAGAAAT
CCATTGGTTCCGAACTGGGGAATTCGTTTGCATCAAATATTAGAATTAAGAAGAACCTTTGGATGATGA
GTATGACAGAGCAGTGGCGCCTCAGCAGGACTACTAGACAGAGTTAAAGACGAACCTGACAATGCCTCA
GAGTATAGTCATGGCCAACAGCAAAAAACTCAAGAGGGGGAATGAAAATTAGTGCTGTGTTTTTCAGTCA
GTGGCAGTCTCTTGTCCACAGTTGACTACTGGCTTTCAGCCTTCTCTGGCATCACCTGGCATGAATAA
AATGCTTCTTCAAGTCCAGCCACAGCTGTTCCAGTTTCTTGTCTGTTGTAAAAAAATCCTCCAGAAG
GGGCAGACTGCTTATCAGAGGAAAGGTTACTCAGCTTTTCTGTCTACCCTGTGCCTCAGGGATACA
CAGTTCCACCTGCCCGCCACCGCTCCCTCACCAAGAAGACTTGTCAAGTTGCTCAAAAGACATTTT
AAATCAAAGGATGTGATCAGTCCAGTTTGAATAAGTACCACAGTAAAGATTTTTGCAGTCAATCA
TGCTTGTCAACATATGAACTGAAAAAAGCCATTGTTACCATAAACACAAATAGCATTCAACCAAT
GCAGCATGTCCAGAAGAAGCTGTTCATTCGACATGAAGTTAATTACCAGAACGTGGTTCATAAGCTCTG
CAGTGATGCCTGTTTTTGAAGTTTCGCTCTGCTAACAACTCACTATGAACTGTTGTGAGAACTGTGGG



GGTTACTGTTATAGTGGCTCTGGACAGTGCCATGTGCTGCAAATTGAGGGGCAGTCTAAGAAGTTTTGTA
 GTTCAATGTGTGTACCTCATACAAGCAGAAATCAGCCAAAATAACACCATGTGCGCTTTGCAAATCATT
 GAGATCCTCAGCAGAAATGATTGAGAATACCAATAGCTTGGGGAAGACAGAACTTTTCTGTTCTGTTAAT
 TGCTTATCTGCTTACAGAGTTAAATGGTACTTCCGCAGGTGTACAAGTTCAGTGTAAACAGTTGAAAA
 CCTCAGCAATCCCTCAGTATCATCTAGCCATGTCAGATGGAAGTATACGCAACTTCTGCAGCTACAGTTG
 TGTGGTAGCTTCCAGAATTTGTTTAAACAAACCAACTGGAATGAATCTTCAGTAGTGCCCTTGTCTCAG
 GGCCAGTAATCGTGAGCATCCCCACAGGTTTCATCAGCATCTGCAGGTGGAGGAGTACACCCGCTGTGT
 CCCCCACCTCGATCAACAGCTCCGCTGCTGCTGGGCTCCAGAGTTGGCTGCCAGTCCCAGCATGTTGG
 GTTTGCCCGAAGTGTGGTGAAGCTTAGGTGTCAACATTGTAACCGTCTTTTTGCCACAAAGCCAGAGCTT
 CTTGACTACAAGGGTAAAATGTTTCAGTCTGTGGCAAGAATTGTTGTGATGAATAAGAAAATCAATA
 ATGTAATGGCAATGTGTGAATACTGTAAAATTGAGAAAATTATAAAGGAGACTGTGAGGTTCTCAGGTGC
 TGACAAGTCATTTGTAGTGAAGTTGCAAATTGCTTTATAAACATGACTTGGGAAAACGCTGGGGAAGT
 CATTGTAAAATGTGCAGTTATTGTTTACAGACATCTCCAAACTGATACAGAATAATTTGGTGGAAAGG
 TGAAGACTTCTGTTGTGAAGAATGCATGTCTAAGTATACAGTTTGTGTTTATCAGATGGCCAAATGTGA
 TGTTTGAAGAGACAGGGTAAACTCAGTGAATCATTGAAATGGCGAGGTGACATAAAACACTTTTGTAAAC
 CTGCTTTGCATCTTGATGTTCTGTTCATCAGCAAAGTGTATGTGACCCACCTTTACAAAACATGCAGTAG
 CAAGTATTTCCATGGTTCAAGCTGCTTCTGCAGGGCCTCCGTCCTCAGAAAAGATTCAACTCCAGTCAT
 TGCTAATGTGGTATCTTTAGCAAGTGTCTGCTGCCAGCCACAGCAAACACCAACAGCGTCTTACAA
 GGTGCAGTTCCAACAGTTACAGCGAAAAATCATTGGGGATGCAAGTACTCAAACAGATGCCCTGAAACTTC
 CACCTTCCAACCTCCAAGGCTTTTGAAGAACAAGCTTTATTGTGCAAACCCATTACACAGACTAAAGC
 CACGTATGTAACCACATACTCAAACAAGAATGCCAGACAGACACTCCAAGTGAAGCCAGGTTATG
 GTGGTACCAGTCCCTGTGCCAGTGTGTTTCCCATACCTTTCATCTTTACACCCAGTACTCCTGTGCC
 CCTTGGGATCCAGTTCCTATGCCTGTCCCATGTTTATCCATCCTCTATGGATAATGATGAGAAAGC
 AACTGAGGGCATTGAAGACATTAAGAGAAACTTGCCACACATCCGTTTGAAGCAGATCTCCTTGAGATG
 GCAGAAATGATTGCAGAAGATGAAGAGAAGGAGAAAACCTTATCCAGGGAGAATCTCAAACCTCTGAAC
 AAGAAGTGTCTAGACACCAAGATATTTGAAAAAGACCAAGGAAGTACATATAGTGGTGTCTTGAGTC
 AGAAGCAGTATCAACTCCACACAGCTGGGAAGAAGAGCTGAATCATTACGCATTAAGTCGAATGCTGTG
 CAAGATGCTGATTGAGAACTGAAACCGTTTTCAAAGGGGAAACAGAGCAGGATCTGGAGGCAGACTTCC
 CATCAGAACTTTTGACCCACTTAATAAAGGACAGGGGATCCAGGCAGTCTCGAACAAGACGAAGACA
 CAGAGATGGATCCCCAGCCAGACGGCGAGGGAGGAAGAAGTCTGTGGTACCTGTGGAACCCAGAAGT
 CTTATTCAGGAGCCTTGAAGGGTGTCTCAGTGTCTGGAATGACTGAAAGTATATGTATGGGGTAAATG
 CCTGGAAGAACTGGGTTCAAGTGGAAAAATGCCAAGGATGAACAAGGAGATCTGAAGTGCAGGGGAGGTGA
 ACTTGCCTCTGCTAGTCCGTGTTCTGACTCCTTAGGAAGTGTCTAAGACCATGCCCTCTCTCAAGAAATCC
 TCAGAGCAAGGCTGTAAGCCCGCTCTGTGAAACTGAAGGAAGATATTCTGCTCTGCACTTTTTCTGAGT
 TGAGTTTGGGCTTATGCCAGTTTATCCAAGAGGTGCGGAGACCAATGGTGAAGATGATGACCCAGACAG
 TATCTTATACCTGTGCCTTGAATTCAGCAGTACCTATTTGAAAATGGTGAATAGATAACATTTTTACG
 GAGCCCTATTCCAGATTTATGATTGAACTTACCAAACCTTGTGAAAATGGAACCTACAATACTTCCTA
 ATGGTTACATGTTCTCCGCATTGAAGAAGAGCATCTGTGGGAGTGCAAACAGCTGGGCGCTTACTCGCC
 CATTGTCTGTAAACACCCCTCTTTTTTCAATACCAAATACTTCCAATAAGGAATGTTACTGAGCAC
 TTGAAGCTGTCTTTGCCACGTGATGCGCCGGACAGGACTCTGAAGTACAGCACCAAGATGACGTACC
 TGAGGTTCTTCCCGCTTTACAGAAGCCGAGTACAGGCCAGATAAGGTAACATTTGCAAGAGGAAACG
 AAATGAAGACGACGAGGCCCCAGTGGGAGTGGAGATGGCAGAGAACACTGACAACCCGCTGAGGTGCCCCG
 GTTCGGCTTTATGAGTTTACCTGTCAAATGTTCTGAAAGTGTGAAGCAGAGGAGTGTGTTCTACC
 TTCAGCCGGAGCGCTCCTGTGTTCTAACAGTCCCATGTGGTACTCCACATTCCCATAGACCCTGGAAC
 CCTGGACACCATGTTGACGCGCATTCTCATGGTGGGAGGTACATGAAGAACTTGCCAAAGCCAAATCT
 GAAGACTCTGATGCTGAATTATCAGAT

ACGCGTACGCGGCCGCTCGAG - GFP Tag - GTTTAA

Protein Sequence: >MG218241 representing NM_001114399
 Red=Cloning site Green=Tags(s)

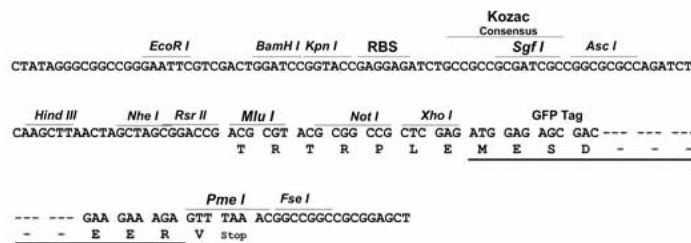
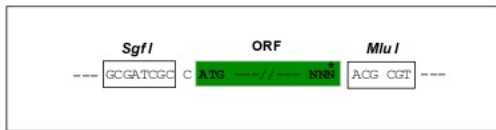
MAEREVETGPRKRFEQKSDAVFDEIVENCVMDTEMSDTHNL TPTLASMSYGMNPQTGSENSLLDEDD
 YFLNSGDLAIPVYSSDNEDEQDCSSKDNLVSSVHTDGSLEVERRAAHQESDNENEIQIQNLKKDFPKQ
 FDQVSVFKSIRKDFCLVRENSKETFSGKEKNRDLTYHEREKRLDKPHKGLDSRLKSSFFDKAANQVEETL
 HTHLPQNPETNFRDSSYPFASKESIGSELGNSFASNIRIKEEPLDDEYDRAVAPQQGLLDRVKDEPDNAQ
 EYSHGQQKTQEGELKISAVFSVSGSPLAPQLTTGFQPSLASPGMNKMLPSVPATAVRVSCSGCKKILQK
 GQTAYQRKGSTQLFCSTLCLTGYTVPPARPPPPLTKKTCSSCSKDILNPKDVISAQFENSTTSKDFCSQS
 CLSTYELKKKPIVTINTNSISTKCSMCQKNAVIRHEVNYQNVVHKLCSDACFSKFRSANNLTMCCENCG
 GYCYSGSGQCHVLQIEGQSKKFCSSMCVTSYKQKSAKITPCALCKSLRSSAEMIENTNSLGTFLFCSVN
 CLSAYRVMVTSAGVQVQCNSCKTSAIPQYHLAMSDGSIRNFCSYSCVAVFQNLFNKPTGMNSSVPLSQ
 GQVIVSIPTGSSASAGGGSTPAVSPTSINSSAAAGLQRLAAQSQHVGFARSVVKLRQCNCNRLFATKPEL
 LDYKGMFQFCGKNCCDEYKKINNVAMCEYCKIEKIIKETVRFSGADKFCSEGGKLLYKHDLGKRWGS
 HCKMCSYCLQTSPLKIQNNLGGKVEDFCCEECMSKYTVLFYQMAKCDGCKRQGLSESLKWRGDIKHFCN
 LLCILMFCHQQTCDPPLQNNAVASISMVQAASAGPPSLRKDSTPVIANVVLASAPAAQPTANTNSVLQ
 GAVPTVTAKIIGDASTQTDALKLPPSQPPRLKKNKALLCKPITQTKATSKPHTQNKECQTDTPSEPQVM
 VVPVVPVFPVPIPLHLYTQYTPVPFGIPVPMVPMFIPSSMDNDEKATEGIEDIKEKLATHPFADLLEM
 AEMIAEDEEKEKTL SQGESQTSEQELFLDTKIFEKQDQGSTYSGDLESEAVSTPHSWEEELNHYALKSNAV
 QDADSELKPF SKGETEQDLEADFPSEFDPLNKGQGIQARSRTRRRHRDGFQPRRRGRKKSVVPVEPRS
 LIQGALQGC SVSGMTLKYMYGVNAWKNWQWKNAKDEQGDLCGGGELASAPCSDSLGS AQDHALSQES
 SEQGCKARSVKLKEDILSCTFSEL SLGLCQFIQEVRRPNGEKYDPDSILYLCGLIQQYL FENGRIDNIFT
 EPYSRFMIELTKLLKIWEPTILPNGYMF SRIEEHLWECKQLGAYSPIVLLNLTLLFFNTKYFQLRNVTEH
 LKLSFAHVMRRTRTLKYSTKMTYLRFPPLQKPESEPDKVTIGKRKRNEDEAPVGVEMAENTDNPLRCP
 VRLYEFYLSKCSSESVKQRSDFVYLQPERSCVPNSPMWYSTFPIDPGTLDTMLTRILMVREHEELAKAKS
 ESDAELSD

TRTRPLE - GFP Tag - V

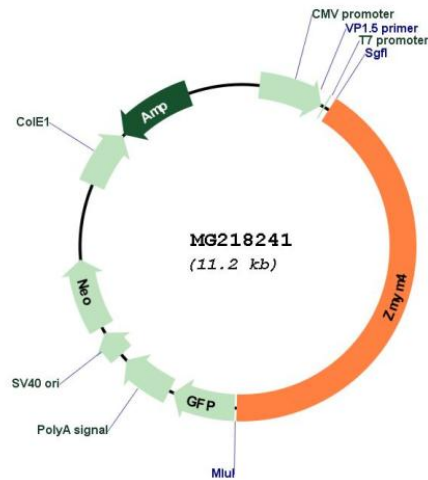
Restriction Sites: SgfI-MluI

Cloning Scheme:

Cloning sites used for ORF Shuttling:



Plasmid Map:



ACCN: NM_001114399

ORF Size: 4647 bp

OTI Disclaimer: The molecular sequence of this clone aligns with the gene accession number as a point of reference only. However, individual transcript sequences of the same gene can differ through naturally occurring variations (e.g. polymorphisms), each with its own valid existence. This clone is substantially in agreement with the reference, but a complete review of all prevailing variants is recommended prior to use. [More info](#)

OTI Annotation: This clone was engineered to express the complete ORF with an expression tag. Expression varies depending on the nature of the gene.

Components: The ORF clone is ion-exchange column purified and shipped in a 2D barcoded Matrix tube containing 10ug of transfection-ready, dried plasmid DNA (reconstitute with 100 ul of water).

Reconstitution Method:

1. Centrifuge at 5,000xg for 5min.
2. Carefully open the tube and add 100ul of sterile water to dissolve the DNA.
3. Close the tube and incubate for 10 minutes at room temperature.
4. Briefly vortex the tube and then do a quick spin (less than 5000xg) to concentrate the liquid at the bottom.
5. Store the suspended plasmid at -20°C. The DNA is stable for at least one year from date of shipping when stored at -20°C.

RefSeq: [NM_001114399.2](#)
RefSeq Size: 7022 bp
RefSeq ORF: 4650 bp
Locus ID: 67785
UniProt ID: [A2A791](#)
Cytogenetics: 4 D2.2
Gene Summary: Plays a role in the regulation of cell morphology and cytoskeletal organization.
[UniProtKB/Swiss-Prot Function]