

Product datasheet for **MG218216**

Gpr19 (NM_001167695) Mouse Tagged ORF Clone

Product data:

Product Type:	Expression Plasmids
Product Name:	Gpr19 (NM_001167695) Mouse Tagged ORF Clone
Tag:	TurboGFP
Symbol:	Gpr19
Mammalian Cell Selection:	Neomycin
Vector:	pCMV6-AC-GFP (PS100010)
E. coli Selection:	Ampicillin (100 ug/mL)
ORF Nucleotide Sequence:	>MG218216 representing NM_001167695 Red=Cloning site Blue=ORF Green=Tags(s)

TTTTGTAATACGACTCACTATAGGGCGGCCGGAATTCGTCGACTGGATCCGGTACCGAGGAGATCTGCC
GCC**CGATCGCC**

ATGGATAACGACCAGCCGCCTGTGGTACTGCCACCCTGCTGGTGCCCTTCAGAACAGCAGCTGCGCGG
AAGCAGCTGAGGCCCTGCTGCCCATGGCTGATGGGATTGCATGAGGAGCACAGCTGGATGAGCAACAG
GACAGAGCTTCAGTACGAGCTGAACCTGGAGAGGTGGCCACCGCCAGCATCTTCTTTGGCGCTTTGTGG
TTGTTCTCCATCTTTGGCAATTCCTGGTATGTCTGGTCATCCACCGAGCCGGAGGACTCAGTCCACCA
CCAATACTTCGTGGTGTCCATGGCGTGTGCTGACCTTTCATCAGCGTGGCCAGCAGCCGTTTGTGCGT
GCTGCAGTTCACCACCGGAGGTGGACCTGGGTAGCGCCATGTGCAAGGTGGTCCGCTACTTCCAGTAC
CTCACCCCGGCGTGCAGATCTACGTGCTGCTCTCCATCTGCATCGACCGCTTCTATACCATCGTCTACC
CGCTGAGCTTCAAGGTGTCCCGAGAGAAGGCCAAGAAAATGATTGCAGCCTCCTGGATCTTGACGCGGC
CTTCGTGACGCCTGTCTTCTTTTCTACGGCTCTAACTGGGATAGTCACTGTAATACTTCTCCTCCCTCCC
TCCTGGGAGGAACTGCCTATACCGTCATCCACTTCTTGGTGGGCTTCGTGATTCCTCCATCCTCATAA
TCCTGTTTTACCAGAAGTGCATAAAGTATATCTGGAGAATAGGCACGGACGGCGGACGCTGAGAAGGAC
GATGAACATTGTCCCAGGACAAAGGTGAAAACGGTCAAGATGTTCTGCTCTTGAACCTAGTGTTCCTG
TTCTCCTGGCTACCTTTCATGTGGCTCAGCTCTGGCATCCCCATGAGCAAGACTACAAGAAGAGCTCCC
TTGCTTTCACGGCAGTCAGTGGGTATCTTTCAGCTCTTCAGCCTCGAAACCCACTCTGTACTCTATTTA
TAATGCCAATTTTCGGAGAGGGATGAAAGAGACATTCTGCATGTCTCGATGAAATGCTACCGCAGCAAT
GCCTACACCATCAGACCAGCTCACGGATGGCCAAAAGAAAATATGTGGGCATTTTCGAAAATCCCTCCC
TGAGCAGGACCATAACCAAAGACTCCATCTATGACTCATTTGACCGGGAGGCCAGGGAGAAGAAGCTCGC
CTGGCCATCAACTCAAACCTCCAAACACTTTTGTC

ACGCGTACGCGGCCGCTCGAG - GFP Tag - GTTTAA



[View online »](#)

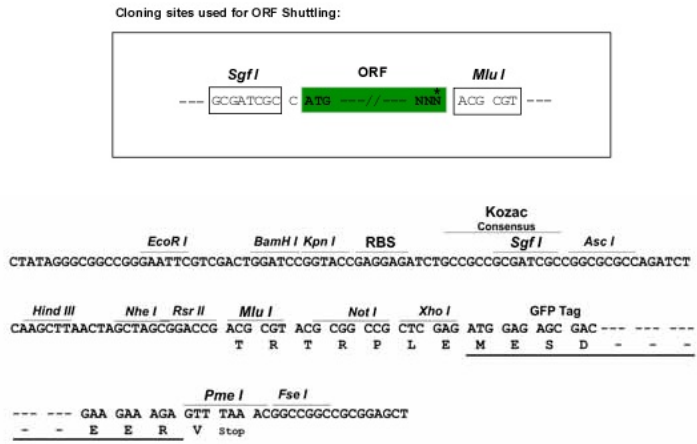
Protein Sequence: >MG218216 representing NM_001167695
 Red=Cloning site Green=Tags(s)

MDNDQPPVVTATLLVPLQNSSCAEAAEALLPHGLMGLHEEHSWMSNRTELQYELNPGEVATASIFFGALW
 LFSIFGNLSVCLVIHRSRRTQSTTNYFVVMACADLLISVASTPFVVLQFTTGRWTLGSAMCKVRYFYQY
 LTPGVQIYVLLSICIDRFYTIIVYPLSFKVSRKAKKMAASWILDAAFVTPVFFFYGSNWDSHCNVFLPP
 SWEGTAYTVIHFLVGFVIPSILIIILFYQKVIKIYIWRIGTDGRTLRRMTNIVPRTKVKTVMFLLNLVFL
 FSWLPPHVAQLWHPHEQDYKSSLVFTAVTWVSFSSASKPTLYSIYNANFRRGMKETFCMSSMKCYRSN
 AYTIITSSRMAKRNYVGISEIPPVSRITITKDSIYDSFDREAREKKLAWPINSNPPNTFV

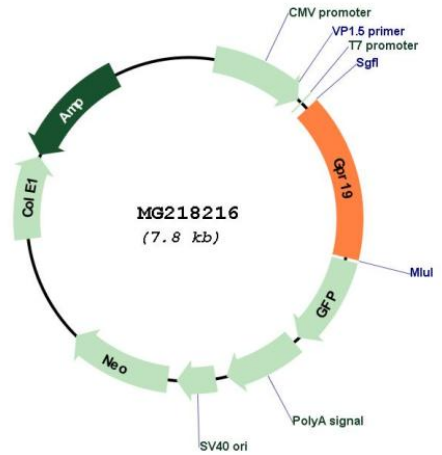
TRTRPLE - GFP Tag - V

Restriction Sites: SgfI-MluI

Cloning Scheme:



Plasmid Map:



ACCN: NM_001167695

ORF Size:	1227 bp
OTI Disclaimer:	The molecular sequence of this clone aligns with the gene accession number as a point of reference only. However, individual transcript sequences of the same gene can differ through naturally occurring variations (e.g. polymorphisms), each with its own valid existence. This clone is substantially in agreement with the reference, but a complete review of all prevailing variants is recommended prior to use. More info
OTI Annotation:	This clone was engineered to express the complete ORF with an expression tag. Expression varies depending on the nature of the gene.
Components:	The ORF clone is ion-exchange column purified and shipped in a 2D barcoded Matrix tube containing 10ug of transfection-ready, dried plasmid DNA (reconstitute with 100 ul of water).
Reconstitution Method:	<ol style="list-style-type: none">1. Centrifuge at 5,000xg for 5min.2. Carefully open the tube and add 100ul of sterile water to dissolve the DNA.3. Close the tube and incubate for 10 minutes at room temperature.4. Briefly vortex the tube and then do a quick spin (less than 5000xg) to concentrate the liquid at the bottom.5. Store the suspended plasmid at -20°C. The DNA is stable for at least one year from date of shipping when stored at -20°C.
RefSeq:	NM_001167695.2
RefSeq Size:	1613 bp
RefSeq ORF:	1230 bp
Locus ID:	14760
UniProt ID:	Q61121
Cytogenetics:	6 G1
Gene Summary:	Orphan receptor.[UniProtKB/Swiss-Prot Function]