

## Product datasheet for **MG218180**

### **Rbm27 (NM\_172626) Mouse Tagged ORF Clone**

#### Product data:

**Product Type:** Expression Plasmids  
**Product Name:** Rbm27 (NM\_172626) Mouse Tagged ORF Clone  
**Tag:** TurboGFP  
**Symbol:** Rbm27  
**Synonyms:** A730010I06; AI043120; mKIAA1311; Psc1  
**Mammalian Cell Selection:** Neomycin  
**Vector:** pCMV6-AC-GFP (PS100010)  
**E. coli Selection:** Ampicillin (100 ug/mL)  
**ORF Nucleotide Sequence:** >MG218180 representing NM\_172626  
 Red=Cloning site Blue=ORF Green=Tags(s)

TTTTGTAATACGACTCACTATAGGGCGGCCGGAATTCGTCGACTGGATCCGGTACCGAGGAGATCTGCC  
 GCC**CGATCGCC**

ATGCTCATAGAAGATGTGGATGCCCTCAAGTCCTGGCTGGCCAAGTTACTGGAGCCGATATGTGATGCTG  
 ACCCTTCAGCCCTAGCCAACATGTTGTAGCACTGGTCAAGAAGGACAAACCTGAGAAGGAATTGAAAGC  
 CTTTTGTGCTGACCAACTTGATGTCTTTTTACAAAAGAGACTTCAGGTTTTGTGGACAACTATTTGAA  
 AGTCTTTATACTAAGAACTACCTCCACCATTGGAACCAAGTTAAACCTGAGCCAAAACCACTAGTCCAAG  
 AAAAGAAGAAATTAAGAAGAGGTATTCAAGAGCCAGCAGAAGAAGAACGAGATACTAGAAAGAAGAA  
 ATATCCTAGTCCTCAGAAGAGTCGTTCAAGATCTAGTGAACGAAGAACACGTTGAGAAGAAAAGAGAAGAT  
 GGCAAGTGGAGAGACTATGAGCGGTAACGAGCGGAATGAGCTGTATCGGGAGAAGTATGACTGGAGAA  
 GGGCAGGAGCAAGAGCAGGAGTAAGAGCCGAGGCTTGAGTCGGAGTAGAAGCCGGAGCAGGGGCCGAG  
 CAAAGACCCGGATCCAAACAGGAACGTTGAGCAGAGGAAAGTCAAAGTTAAGAGCGAAAAGAAATGAC  
 CTGGAGAGCTCTATGTGCTGTGTCTGCTCCACCTCCAAGCTCTTCTGAGCAGTATTCCTCTGGGGCAC  
 AGTCTATCCAGCACTGCACTGTGATTGCACCTGCGCACCATCTGAGAACAACAAGTGAAGCTGGTC  
 TAATTACTATAACAATCATAGCTCTTCCAATTCTTTGGTCAAAACCCACCACCAAGAGGCGCTGCAGA  
 GATTACGATGAAAGAGGATTTTGTGACTTGGTGACCTTTGTGATGATGATGATGATGATGATGATGATGAT  
 TTGTTGATGAAGTTGCTCTGCCAAGTATGATTCCTTTCCACCCCTCCTCTGGGCTTCTCTCCACC  
 ACCTCCCGGAATGTTAATGCCTCCAATGCCAGGTCCAGGCCAGGCCCTGGTCTGGCCCTGGCCCTGGT  
 CCCGGCCAGGCCAGGCCCTGGTCATAGTATGAGACTTCTGTTCTCAAGGACATGGTCAGCCTCCAC  
 CTTCTGTTGTGCTTCCATACCAAGACCTCCATTTACAGTCAAGTTAATAAACAGCCGTGACCAGCC  
 TGGGACAAGTGCAGTGCCCAATCTGCACCAGTGGGAGCAAGACTACCTCCTCTTTACCGCAGAACCTC  
 CTTTATACAGTATCAGAAAATACATATGAACCAGATGGCTATAATCCTGAAGCACCTAGCATCACCAGTT  
 CTGGTAGATCACAGTACAGACAGTCTTCTCAAGAGCACAGACAGCGTCCCAACCTGATTGGCCTCAC  
 ATCTGGAGATATGGATGCAAATCCAAGAGCTGCTAATATTGTCATCCAGACTGAACCACCAGTTCCTGTT



[View online »](#)

TCAGTTAATAGCAACGTCACCAGAGTAGTCTGGAACCCAGAGAGCCGAAAGAGAGCTATTAGTGGTTTGG  
 AGGGGCCACTTACAAAGAAGCCTTGGCTGGGAAAAACAAGGGAACAACAATCAAAGTAAACCAGGCTTCT  
 GAGGAAGAATCATTATACAAACACCAAAGTAGAGGTGAAAAAATCCCCAGGAATTGAACAACATTACC  
 AAGCTCAACGAACACTTCAGCAAATTTGGAACCATAGTTAATATCCAGGTTGCTTTTAAGGGTGATCCAG  
 AAGCAGCACTCATCCAATACCTTACCAATGAAGAGGCCAGGAAAGCCATTCTAGCACAGAAGCAGTTTT  
 GAAACAATCGGTTTCATTGAGTCTGTGGCATAGAGAGAACAATGAGCAACCAGCACTCCAGTCTCAGCA  
 CAGATTTCTCTGCAGCAGCAACACACCCTGAGTCACCTTTCACAGCAACACCATAGCCTCCCACAGCATC  
 TTCATCCGCAGCAGGTGATGGTAACCCAGTCTTCCCCTCATCGTCCATGGAGGTATCCAAAAGATGAT  
 GGGCAAACCACAGACCTCTGGTGCCTATGTTCTTAACAAAGTCCCTGTTAAACACCGTCTTGGACATGCA  
 AGTACTAACCAGAGTGACACGTCTCACTTGCTAAATCAGACTGGTGGTCTTCTGGGGAAGATTGTCGG  
 TATTTTCTACTCCAGGCCATCCAAAAACAATTTACAGCTCTTCAAACCTAAAGGCACCTTCAAACCTTG  
 TTCAGGGTCTAAATCTCATGATGTTCAAGAAGTCTTAAGAAGAAACAGGAAGCAATGAAGTTACAGCAA  
 GACATGAGGAAAAAGAAACAAGAAATGTTGAAAAGCAGATAGAATGCCAGAAGATGCTGATTTCTAAAC  
 TAGAAAAGAACAAAAACATGAAACCAGAAGAAAGAGCAAATAAATGAAGACCTTGAAGAAGTGGGAGA  
 GAAGATCTCACAATTGAAAGATGAATTAACAACATCTTCTACAGTCTCCACACCGTCCAAAGTAAAGACA  
 AAAACAGAGGCCAGAAGGAGTTGTTGGACACAGAGTTGGACCTCCACAAGAGGCTCTCTCAGGAGAAG  
 ATACAACAGAATTACGTAACAAAGCTCAGTCAGTTACAAGTTGAGGCTGCAAGATTAGGTATTTTACCTGT  
 GGGGAGAGGAAAGACCATATCTCTCAAGGCCGAGGAAGAGGCAGGGGTGAGGAAGAGGGAGGGGCTCA  
 CTGAATCACATGGTGGTGGATCACCGCCCCAAAGCTCTCCAGGTGGAGGATTCAATTGAGGAGGAAAAAG  
 ATGAGTTGCTTACGATTTCTCAGCTACAAACCAAGCATCAAATTCAAAGACCGTCCGCTACAGATCTC  
 ATGGCATAAGCCCAAGGTACCATCTATCTACTGAGACCGAGGAAGAGGAAGTCAAAGAAGAGGAAACA  
 GAAACCTCAGATTTGTTTTGCATGATGATGATGATGAAGATGAAGATGAATATGAGTCTCGTTCGTGGC  
 GAAGA

ACGCGTACGCGGCCGCTCGAG - GFP Tag - GTTTAA

**Protein Sequence:**

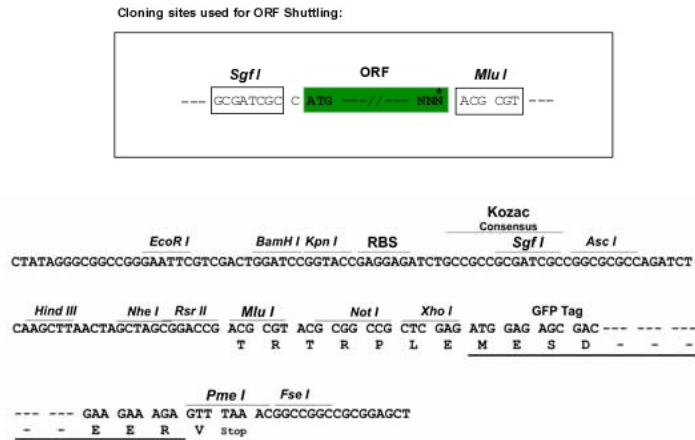
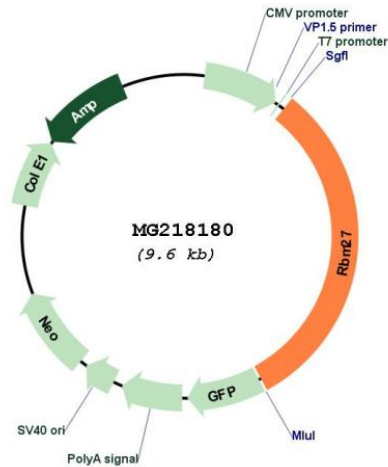
>MG218180 representing NM\_172626  
 Red=Cloning site Green=Tags(s)

MLIEDVDALKSWLAKLLEPICDADPSALANYVVALVKKDKPEKELKAFCADQLDVFQKETSQFVDFKLF  
 SLYTKNYLPPLEPVKPEPKPLVQEKEEIKEEVFQEPAEERDTRKKKYPSPQKSRSESSERRTREKKRED  
 GKWRDYERYERNELYREKYDWRGRSKSRKSRGLSRSRSRGRSKDRDPNPNVHRERSKFKSERND  
 LESSYVVSAPPSSSEQYSSGAQSIPSTVTVIAPAHSENTTESWSNYNNHSSNSFGRNPPPKRRRCR  
 DYDERGFCVLDGDLQFDHGNDPLVVDEVALPSMIPFPFPPPPGLPPPPPPGMLMPPMPGPGPGPGPGG  
 PGPMPGPGHSMRLPVPQGHGQPPPSVVLPIPRPPISSQLINSRDQPGTSAVPLAPVGARLPPPLPQNL  
 LYTVENTYEPDGYNPEAPSISSGRSQYRQFFSRAQTQRPNLIGLTSGDMDANPRAANIVIQTPEPPVPV  
 SVNSNVTRVVLEPESRKRAISGLEGLTKKPWLKQGNQSKPGFLRKNHYTNTKLEVKKIPQELNNIT  
 KLNHFHFKFTIVNIQVAFKGDPEAALIQYLTNEEARKAISSTEAVLNNRFIRVLWHRENNEQPALQSSA  
 QILLQQHTLSHLQHHSLPQHLHPQQVMVTQSSPSSVHGGIQKMMGKQTSAGAYVLNKVPVKHRLGHA  
 STNQSDTSHLLNQTTGGSSGEDCPVFSTPGPKTIYSSNLKAPSKLCSGSKSHDVQEVLLKKQEAAMKLQQ  
 DMRKKKQEMLEKQIECQKMLISKLEKNMMPKPEERANIMKTLKELGKISQLKDELKTSSTVSTPSKVK  
 KTEAQKELLDTELHLKRLSSGEDTTELKRLSQLQVEAARLGIPLVGRGKTISSQGRGRGRGRGRGRS  
 LNHMVVDHRPKALPGGGFIEEEKDELLQHF SATNQASKFKDRRLQISWHKPKVPSISTETEEEEVEKEET  
 ETSDLFLHDDDEDEDEYESRSWRR

TRTRPLE - GFP Tag - V

**Restriction Sites:**

Sgfl-MluI

**Cloning Scheme:**

**Plasmid Map:**


**ACCN:** NM\_172626

**ORF Size:** 3015 bp

**OTI Disclaimer:** The molecular sequence of this clone aligns with the gene accession number as a point of reference only. However, individual transcript sequences of the same gene can differ through naturally occurring variations (e.g. polymorphisms), each with its own valid existence. This clone is substantially in agreement with the reference, but a complete review of all prevailing variants is recommended prior to use. [More info](#)

<b>OTI Annotation:</b>	This clone was engineered to express the complete ORF with an expression tag. Expression varies depending on the nature of the gene.
<b>Components:</b>	The ORF clone is ion-exchange column purified and shipped in a 2D barcoded Matrix tube containing 10ug of transfection-ready, dried plasmid DNA (reconstitute with 100 ul of water).
<b>Reconstitution Method:</b>	<ol style="list-style-type: none"><li>1. Centrifuge at 5,000xg for 5min.</li><li>2. Carefully open the tube and add 100ul of sterile water to dissolve the DNA.</li><li>3. Close the tube and incubate for 10 minutes at room temperature.</li><li>4. Briefly vortex the tube and then do a quick spin (less than 5000xg) to concentrate the liquid at the bottom.</li><li>5. Store the suspended plasmid at -20°C. The DNA is stable for at least one year from date of shipping when stored at -20°C.</li></ol>
<b>RefSeq:</b>	<u><a href="#">NM_172626.2</a></u> , <u><a href="#">NP_766214.2</a></u>
<b>RefSeq Size:</b>	6266 bp
<b>RefSeq ORF:</b>	3018 bp
<b>Locus ID:</b>	225432
<b>UniProt ID:</b>	<u><a href="#">Q5SFM8</a></u>
<b>Cytogenetics:</b>	18 B3