

## Product datasheet for **MG218175**

### **Ccr8 (NM\_007720) Mouse Tagged ORF Clone**

#### Product data:

Product Type:	Expression Plasmids
Product Name:	Ccr8 (NM_007720) Mouse Tagged ORF Clone
Tag:	TurboGFP
Symbol:	Ccr8
Synonyms:	C-C; C-C CKR-8; CC-CKR-8; CCR-8; CKR-8; Cmkbr8; mCCR8
Mammalian Cell Selection:	Neomycin
Vector:	pCMV6-AC-GFP (PS100010)
E. coli Selection:	Ampicillin (100 ug/mL)
ORF Nucleotide Sequence:	>MG218175 representing NM_007720 Red=Cloning site Blue=ORF Green=Tags(s)

TTTTGTAATACGACTCACTATAGGGCGGCCGGAATTCGTCGACTGGATCCGGTACCGAGGAGATCTGCC  
GCC**CGATCGCC**

ATGGATTACAGATGGAGCCCAACGTCACGATGACCGACTACTACCCTGATTTCTTACCGCCCCCTGTG  
ACGCAGAGTTCCTCCTCAGGGGCAGCATGCTGTATCTGGCCATCTTGTACTGCGTCTTGTTGTGCTGGG  
CCTTCTGGGGAACAGCCTGGTCATCTTAGTCTCGTGGGCTGCAAGAACTGAGGAGCATCACAGATATC  
TACCTCCTGAACCTGGCCGATCCGACCTGCTCTTTGCTCTCTATTCTTTTCAGACCCACAACCTGC  
TGGACCAGTGGGTGTTTGGGACTGCGATGTGTAAGGTGGTCTCTGGCCTTTATTACATTGGTTTTTCAG  
CAGTATGTTCTTCATCACCTAATGAGTGTGGACAGGTATCTGGCTATTGTCCACGCTGTCTATGCCATC  
AAGGTGAGGACGGCCAGCGTGGGCACAGCCCTGAGTCTGACAGTGTGGCTGGCTGCTCACAGCCACCA  
TCCCTTGATGGTTTTTACCAAGTGGCCTCTGAAGACGGCATGCTACAATGTTTCCAGTTTTATGAAGA  
GCAGTCTTTGAGGTGGAAGCTCTTACCCTTTGAAATCAACGCCTTGGGTCTGCTGCTCCCTTTGCC  
ATCCTCCTGTTCTGCTATGTCAGGATCCTGCAGCAGCTGCGGGGCTGCCTGAACCACAACAGGACCAGAG  
CCATCAAGCTGGTGTCCACGATGTCATTGTGTCTTTACTCTTCTGGGTCCCATTCAACGTGGCCCTTTT  
CCTCACGTCCCTGCACGACCTGCACATCTTGGATGGATGTGCCACGAGGCAGAGGCTGGCTCTGGCCATC  
CATGTACAGAGGTCATCTCTTTTACCCTGCTGCGTGAACCCGTCATCTACGCGTTCATAGGAGAGA  
AGTTTAAGAAACCTCATGGATGTGTTTCAAAAGAGCTGCAGCCACATCTTCTCTACTTAGGGAGACA  
AATGCCCGTGGGGCGTTGGAAAGGCAGCTGTCTCGAACCAGCGATCTTCCATTCTTCCACCCTGGAT  
GACATCTTG

AG**CGGACCG**ACGCGTACGCGGCCGCTCGAG - GFP Tag - GTTTAA



[View online »](#)

**Protein Sequence:** >MG218175 representing NM\_007720  
Red=Cloning site Green=Tags(s)

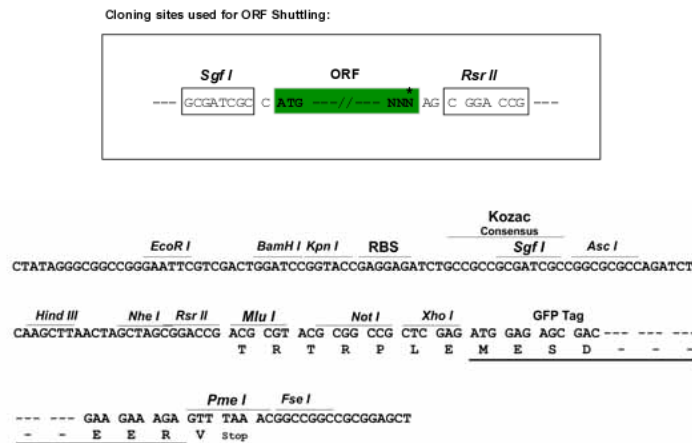
MDYTMEPNVTMTDYYPDFFTAPCDAEFLLRGSMYLAILEYCVLFVLGLLGNSLVILVLVGCKKLRSITDI  
 YLLNLAASDLLFVLSIPFQTHNLLDQWVFGTAMCKVVSGLYYIGFFSSMFFITLMSVDRYLAIVHAVYAI  
 KVRTASVGTALSLTVWLAAVTATIPLMVFYQVASEDGMQLQCFQFYEEQSLRWKLFTHFEINALGLLLPFA  
 ILLFCYVRILQQLRGCLNHNRTRAIKLVLTVVIVSLLFWVPFNVALFLTSLHDLHLDGCA TRQRLALAI  
 HVTEVISFTHCCVNPVIYAFIGEKFKKHLMDFVQKSCSHIFLYLGRQMPVGALERQLSSNQRSSHSSTLD  
 DIL

SGPTRRRLE - GFP Tag - V

**Chromatograms:** [https://cdn.origene.com/chromatograms/ja3434\\_a08.zip](https://cdn.origene.com/chromatograms/ja3434_a08.zip)

**Restriction Sites:** SgfI-RsrII

**Cloning Scheme:**



**ACCN:** NM\_007720

**ORF Size:** 1059 bp

**OTI Disclaimer:** The molecular sequence of this clone aligns with the gene accession number as a point of reference only. However, individual transcript sequences of the same gene can differ through naturally occurring variations (e.g. polymorphisms), each with its own valid existence. This clone is substantially in agreement with the reference, but a complete review of all prevailing variants is recommended prior to use. [More info](#)

**OTI Annotation:** This clone was engineered to express the complete ORF with an expression tag. Expression varies depending on the nature of the gene.

**Components:** The ORF clone is ion-exchange column purified and shipped in a 2D barcoded Matrix tube containing 10ug of transfection-ready, dried plasmid DNA (reconstitute with 100 ul of water).

**Reconstitution Method:**

1. Centrifuge at 5,000xg for 5min.
2. Carefully open the tube and add 100ul of sterile water to dissolve the DNA.
3. Close the tube and incubate for 10 minutes at room temperature.
4. Briefly vortex the tube and then do a quick spin (less than 5000xg) to concentrate the liquid at the bottom.
5. Store the suspended plasmid at -20°C. The DNA is stable for at least one year from date of shipping when stored at -20°C.

**RefSeq:** [NM\\_007720.2](#), [NP\\_031746.1](#)

**RefSeq Size:** 1156 bp

**RefSeq ORF:** 1062 bp

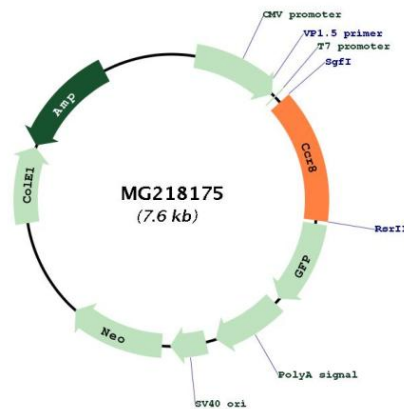
**Locus ID:** 12776

**UniProt ID:** [P56484](#)

**Cytogenetics:** 9 F4

**Gene Summary:** Receptor for the CCL1/SCY1/TCA-3 chemokine.[UniProtKB/Swiss-Prot Function]

### Product images:



Circular map for MG218175