

Product datasheet for **MG218174**

Taok1 (NM_144825) Mouse Tagged ORF Clone

Product data:

Product Type:	Expression Plasmids
Product Name:	Taok1 (NM_144825) Mouse Tagged ORF Clone
Tag:	TurboGFP
Symbol:	Taok1
Synonyms:	2810468K05Rik; AU020252; D130018F14Rik; Map3k16; Markk; mKIAA1361; Psk2
Mammalian Cell Selection:	Neomycin
Vector:	pCMV6-AC-GFP (PS100010)
E. coli Selection:	Ampicillin (100 ug/mL)



[View online »](#)

ORF Nucleotide Sequence:

>MG218174 representing NM_144825
 Red=Cloning site Blue=ORF Green=Tags(s)

TTTTGTAATACGACTCACTATAGGGCGGCCGGAATTCGTCGACTGGATCCGGTACCGAGGAGATCTGCC
 GCC**CGCATCGCC**

ATGCCATCAACTAACAGAGCAGGCAGTCTAAAGGACCCTGAAATTGCAGAGCTCTTCTTCAAAGAAGATC
 CGGAAAAGCTCTTACAGATCTCAGAGAAATCGGCCATGGGAGCTTTGGAGCAGTATATTTTGCAGGAGA
 TGTGCGTACTAATGAAGTGGTGGCCATCAAGAAAATGTCTTATAGTGGAAGCAGTCTACTGAGAAATGG
 CAGGATATTATTAAGGAAGTCAAGTTTCTACAAAGAATAAAACATCCCAACAGTATAGAATACAAAGGCT
 GCTATTTACGTGAACACACAGCATGGCTTGAATGGAATATTGTTTAGGATCTGCTTCAGATTTATTAGA
 AGTTCATAAAAAGCCATTACAAGAAGTGGAAATAGCAGCAATTACACATGGTGTCTCCAGGGACTAGCT
 TATTTACATTCTCATACCATGATCCATAGAGATATCAAAGCAGGAAATATCCTTCTGACAGAACCAGGCC
 AAGTGAACCTTGCTGACTTTGGATCTGCTCCATGGCTTCCCCTGCCAATCTTTTGTGGGAACACCATA
 TTGGATGGCCCCAGAAGTAATTTAGCCATGGATGAAGGACAGTATGATGGCAAAGTTGATGATGGTCT
 CTTGGAATAACGTGTATTGAATTAGCCGAGAGGAAGCCTCCTTTATTTAATATGAATGCAATGAGTGCTT
 TATATCATAGCCAAAATGAATCCCCTACACTACAATCTAATGAATGGTCTGATTATTTTCGAAACTT
 TGTAGATTCTTGCTCCAGAAAATCCCTCAAGATCGCCCTACATCAGAGGAACTTTAAAGCACATGTTT
 GTTCTTCGAGAGCGCCCTGAAACAGTGTAAATAGATCTTATTCAAAGGACAAAGGATGCAGTAAGAGAGC
 TGGACAATCTGCAGTATCGAAAGATGAAGAAATCCTTTTCCAGGAGGCACATAATGGGCCAGCGGTAGA
 AGCACAGGAAGAAGAGGAGGAGCAAGATCATGGTGTGGCCGAACAGGAACAGTGAATAGTGTGGAAAGC
 AATCAGTCTATCCCTAGTATGTCTATCAGTGCCAGCAGTCAAAGCAGCAGTGTAAATAGTCTTCCAGTG
 CATCAGATGACAAGAGTGAGCTAGACATGATGGAGGGAGACCATACAGTGTATGCTAACAGTTCTGTGCAT
 CCACCTTAAACCTGAGGAGGAAAATTACCAGGAAGAAAGGAGATCCTAGAACAAGAGCATCAGACCACAG
 TCTCCCCCTCAGGTGTCTCGTCACAAGTACATTATCGTAATAGAGAACACTTTGCAACCATACGAACAG
 CATCACTGGTTACAAGACAGATGCAAGAACATGAGCAGGACTCTGAACTTAGAGAACAGATGTCTGGTTA
 TAAGCGGATGAGGCGACAGCATCAAAGCAGCTGATGACGCTGGAAAATAAACTGAAGGCAGAGATGGAC
 GAACATCGGCTCAGATTAGACAAAGATCTTGAACCTCAGCGTAACAATTCGCTGCAGAAATGGAGAAAC
 TTATTAAGAAACACCAAGCTGCTATGAAAAAGAGGCTAAAGTGTGGCCAATGAGGAGAAAAAATCCA
 GCAACACATTGAGCTCAACAGAAAAAAGAACTGAATAGCTTTTTGGAGTCTCAAAAAAGAGAATATAAA
 CTTTCGAAAGAGCAGCTTAAAGGAGAGCTGAATGAAAACCAGAGCACCTAAAAAGAAAAGCAGGAAT
 GGCTTTCAAAGCAGAAGGAGAATATACAGCATTTCAGGCAGAAGAAGAGCTAATCTTCTTCGAGGTCA
 AAGGCAGTATCTAGAGCTAGAATGTCGTCGCTTCAAAAAGAAGAATGTTACTTGGGCGACATAACTGGAA
 CAGGACCTTGTACAGGAGGAGTTAAACAAAAGGCAGACTCAAAGGACTTGAACATGCAATGCTATTGC
 GACAGCATGAATCAATGCAAGAACTGGAGTTTCGCCATCTCAACACTATTCAGAAGATGCCTGTGAGTT
 GATCAGACTGCAGCATCAAAGTGAAGTCACTAACCAGCTAGAGTACAATAAGAGAAGGGAACGGGAACTG
 AGGCGAAAACATGTCATGGAAGTTCGACAACAACCTAAGAGTCTGAAGTCTAAGAACTCCAAATAAAAA
 AGCAGTTTCAGGATACCTGCAAAATTCAAACCAGACAGTACAAGCATTAAAGAACTCACCTACTGGAGAC
 TACACCAAAGAGTGAGCACAAGCTGTTTTGAAAAGACTCAAGGAGGAACAGACTCGAAAGTTAGCCATC
 TTGGCTGAGCAGTATGATCATAGCATTAAATGAAATGCTCTCCACACAAGCTCTGCGTTTGGATGAAGCAC
 AGGAAGCAGAATGCCAGTTCTGAAGATGCAGCTGCAGCAGGAACTGGAGCTGCTGAATGCTTATCAGAG
 CAAAATAAAGATGCAAGCTGAGGCCAACATGATCGAGAGCTTCGAGAGCTGGAACAGAGGGTCTCCCTT
 CGCAGAGCGCTCTTAGAACAAAAGATTGAAGAAGAGATGTTGGCTTTCGAGAATGAACGCACAGAACGAA
 TACGTAGCCTGCTCGAGCGTCAAGCCAGAGAAATTGAAGCATTGACTCTGAAAGCATGAGATTAGGTTT
 TAGTAACATGGTCTTTCTAATCTCTCCCCTGAGGCATTAGCCACAGCTACCCAGGAGCTTCTAGTTGG
 TCTCACAATCCTACTGGGGTCCAGGACCTCACTGGGGTCACTCCATGGGTGGCACACCACAAGCTTGGG
 GTCATCCGATGCAAGGTGGACCCCAACCATGGGGTCACTCCCTCAGGGCCAATGCAAGGGTACCTCGAGG
 TAGCAGTATGGGAGTCCGCAATAGCCCCAGGCTTTGAGGCGGACAGCTTCTGGGGGACGGACGGAACAG
 GGCATGAGCAGAAGCAGGAGTGTCACTTCAAAATATCCAATGGGTACACATGTCTTACACA

ACGCGTACGCGGCCGCTCGAG - GFP Tag - GTTTAA

Protein Sequence: >MG218174 representing NM_144825
 Red=Cloning site Green=Tags(s)

```

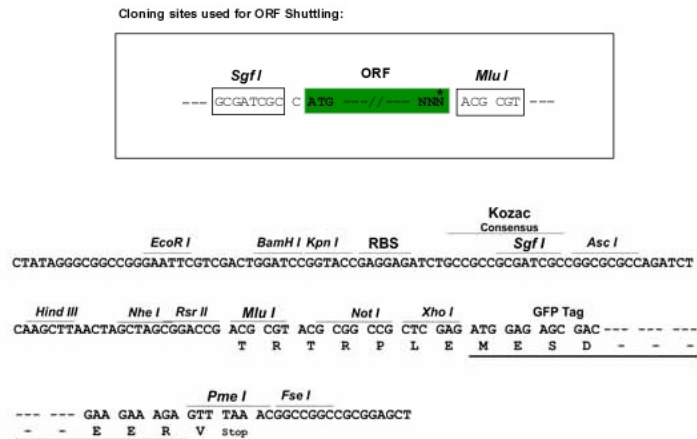
MPSTNRAGSLKDPEIAELFFKEDPEKLFDTLREIGHGSFGAVYFARDVRTNEVVAIKKMSYSGKQSTEKW
QDIIEVKVFLQRKHPNSIEYKGCYLREHTAWL VMEYCLGSADLLEVHKKPLQEVEIAAITHGALQGLA
YLHSHTMIHRDIKAGNILLTEPGQVKLADFGSASMASPANSFVGTPYWMAPVILAMDEGQYDGKVDVWS
LGITCIELAERKPPFLFNMNAMSALYHIAQNESPTLQSNESWDYFRNFVDSCLQKIPQDRPTSEELLKHM
VLRRPETHVLDLIRTKDAVRELDNLQYRKMKKLLFQEAHNGPAVEAQEEEEQDHGVGRTGTVNSVGS
NQSIPTMSISASSQSSVNSLPDASDDKSELDMMEGDHTVMSNSSVIHLKPEEENYQEEGDPRTASDPQ
SPPQVSRHKSHYRNREHFATIRASLVTRQMGEHEQDSELREQMSGYKRMRRQHQQKQKLMLENKKAEMD
EHRLRLDKDLETQRNFAAEMEKLKHKQAAMEKEAKVMANEEKKFQQHIQAQQKELNSFLESQKREYK
LRKEQLKEELNENQSTPKKEKQEWL SKQKENIQHFQAEANLLRRQRQYLELECRFRKRRMLLGRHNLE
QDLVREELNKRQTKQDLEHAMLRLQHESMQELEFRHLNTIQKMRCELIRLQHQTEL TNQLEYNKRREREL
RRKHVMEVRQPKSLKSKELQIKKQFQDTCKIQTRQYKALRNHLETPPKSEHKAVLKRLEEQTRKLA
LAEQYDHSINEMLSTQALRLDEAQEAECQVLMQLQEQLELLNAYQSKIKMQAEAQHDRELRELEQRVSL
RRALLEQKIEEEMLALQNERTERIRSLLEQAREIEAFDSESMRLGF SNMVL SNLSPEAFSHSYPGASSW
SHNPTGGPGPHWGHPMGGTPQAWGHPMQGGPQWGHPSPGMQGVPRGSSMGVNRNSPQALRRTASGRTEQ
GMSRSTSVTSQISNGSHMSYT
  
```

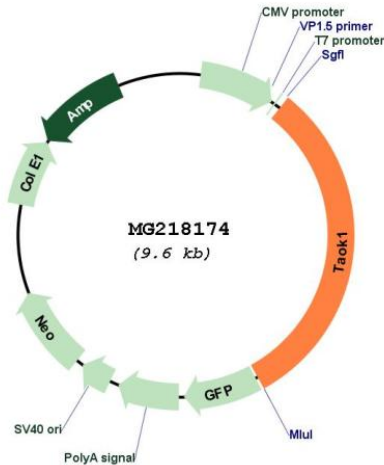
TRTRPLE - GFP Tag - V

Restriction Sites:

Sgfl-MluI

Cloning Scheme:



Plasmid Map:


ACCN: NM_144825

ORF Size: 3003 bp

OTI Disclaimer: The molecular sequence of this clone aligns with the gene accession number as a point of reference only. However, individual transcript sequences of the same gene can differ through naturally occurring variations (e.g. polymorphisms), each with its own valid existence. This clone is substantially in agreement with the reference, but a complete review of all prevailing variants is recommended prior to use. [More info](#)

OTI Annotation: This clone was engineered to express the complete ORF with an expression tag. Expression varies depending on the nature of the gene.

Components: The ORF clone is ion-exchange column purified and shipped in a 2D barcoded Matrix tube containing 10ug of transfection-ready, dried plasmid DNA (reconstitute with 100 ul of water).

Reconstitution Method:

1. Centrifuge at 5,000xg for 5min.
2. Carefully open the tube and add 100ul of sterile water to dissolve the DNA.
3. Close the tube and incubate for 10 minutes at room temperature.
4. Briefly vortex the tube and then do a quick spin (less than 5000xg) to concentrate the liquid at the bottom.
5. Store the suspended plasmid at -20°C. The DNA is stable for at least one year from date of shipping when stored at -20°C.

RefSeq: [NM_144825.3](#)

RefSeq Size: 12411 bp

RefSeq ORF: 3006 bp

Locus ID: 216965

UniProt ID: [Q5F2E8](#)

Cytogenetics: 11 B5

Gene Summary:

Serine/threonine-protein kinase involved in various processes such as p38/MAPK14 stress-activated MAPK cascade, DNA damage response and regulation of cytoskeleton stability. Phosphorylates MAP2K3, MAP2K6 and MARK2. Acts as an activator of the p38/MAPK14 stress-activated MAPK cascade by mediating phosphorylation and subsequent activation of the upstream MAP2K3 and MAP2K6 kinases. Involved in G-protein coupled receptor signaling to p38/MAPK14. In response to DNA damage, involved in the G2/M transition DNA damage checkpoint by activating the p38/MAPK14 stress-activated MAPK cascade, probably by mediating phosphorylation of MAP2K3 and MAP2K6. Acts as a regulator of cytoskeleton stability by phosphorylating 'Thr-208' of MARK2, leading to activate MARK2 kinase activity and subsequent phosphorylation and detachment of MAPT/TAU from microtubules. Also acts as a regulator of apoptosis: regulates apoptotic morphological changes, including cell contraction, membrane blebbing and apoptotic bodies formation via activation of the MAPK8/JNK cascade (By similarity).[UniProtKB/Swiss-Prot Function]